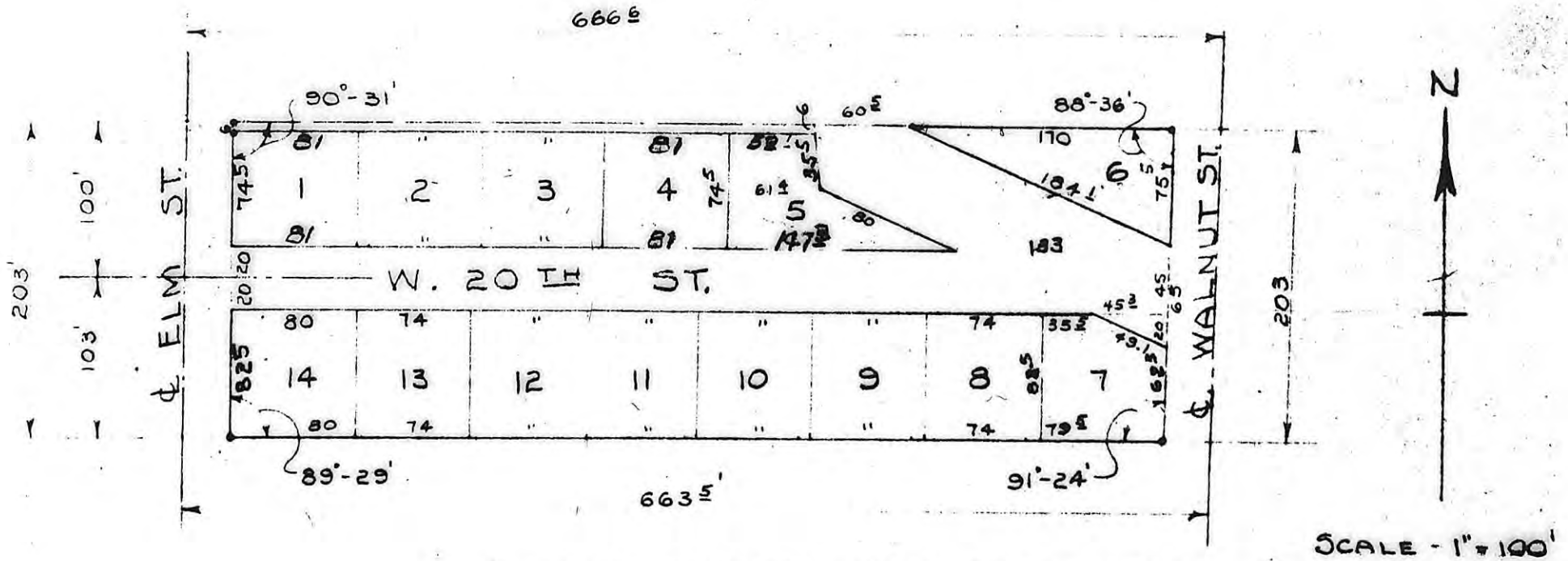


THIS IS A DIRECT PHOTOGRAPHIC REPRODUCTION OF THE OFFICIAL INSTRUMENT (RECORDED PLAT).

THIS REPRODUCTION WAS MADE BY BUCHER & WILLIS, CONSULTING ENGINEERS, PLANNERS & ARCHITECTS IN JUNE 1979



HAYS DEVELOPMENT, INC.

SUB-DIVISION OF BLOCK 15

LEOBOLD, ALLEN & CO'S. ADD.

HAYS, KANSAS

STATE OF KANSAS }  
ELLIS COUNTY } SS

This instrument was filed for record

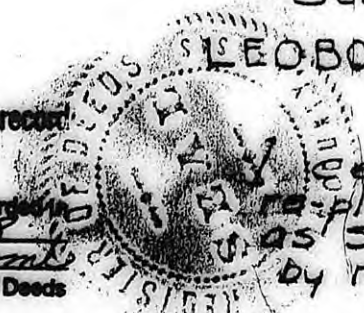
AUG 23 1950

1:00 o'clock M recorded

2 of 2 Pages

Fee 2.00 Register of Deeds

For Dedi. See 22 Misc Page 508



I certify this to be a correct re-plat of Blk 15 LA & Co. Hays, Kansas as same was surveyed and platted by me.

L. W. Servis, Engineer

