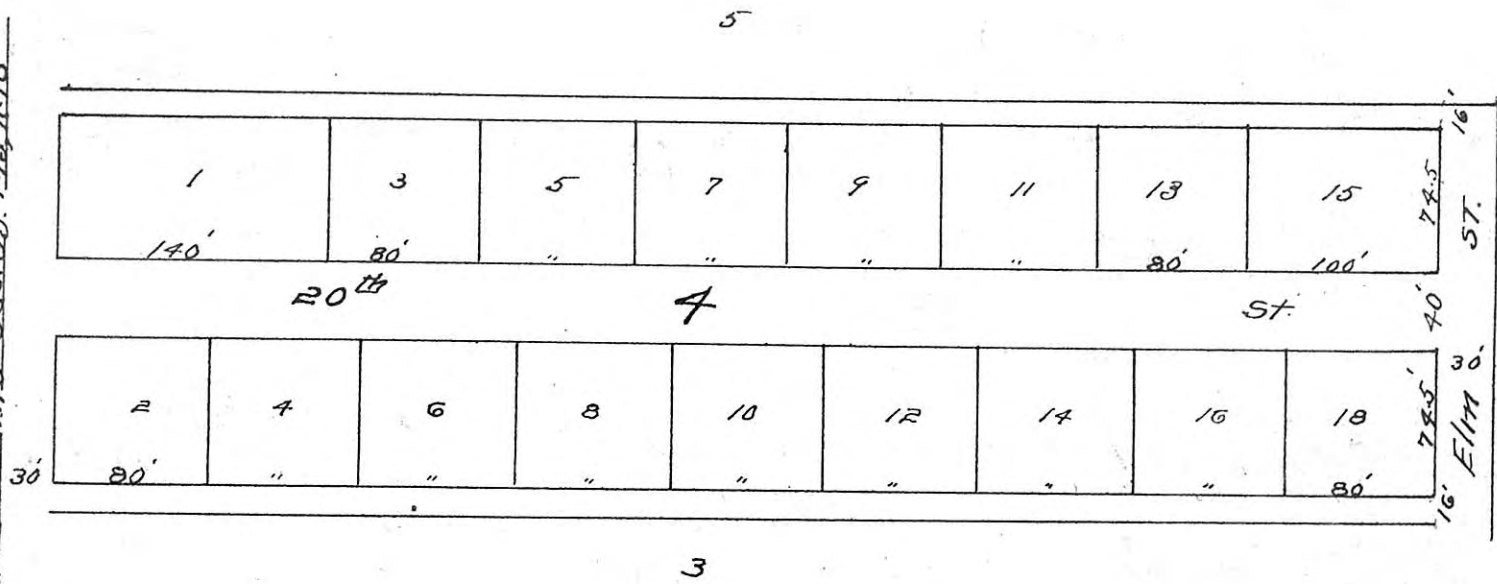


West Sec. Line Sec. 23. T.13. R.18



HAYS DEVELOPEMENT INC. SUB-DIVISION
 OF
 ALL OF BLOCK 4 AND PART OF BLOCK 5 IN
 LEOBOLD ALLEN & CO'S ADDITION TO HAYS
 AND PART OF BLOCK 3 HIGHLAND ADDITION
 TO HAYS CITY

Scale 100' = 1 Inch

STATE OF KANSAS }
 ELLIS COUNTY } SS
 This instrument was filed for record
 OCT 2 1948
 9:30 o'clock A. M. recorded in
 of Page
 J. E. Haas
 Fess 2.00 Register of Deeds