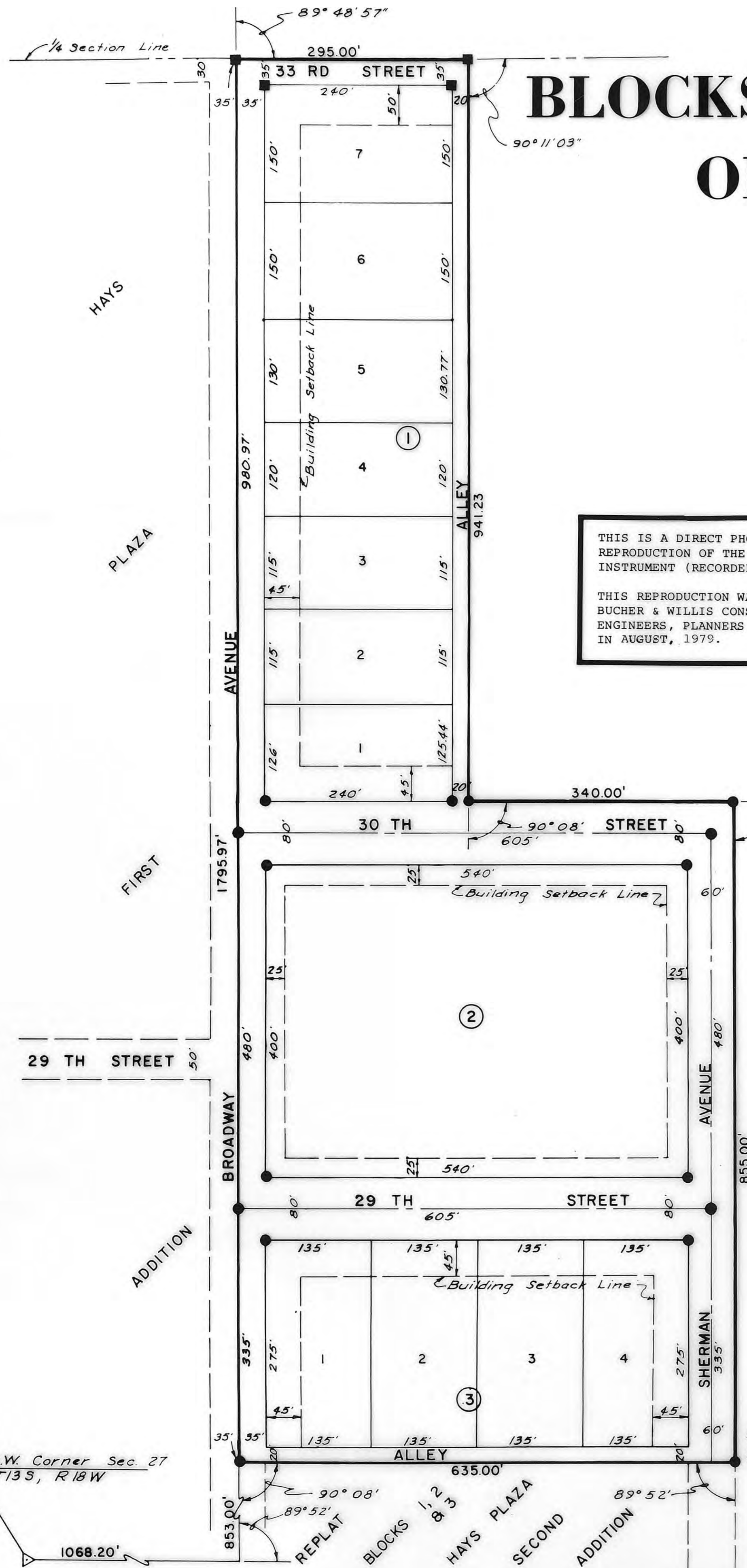
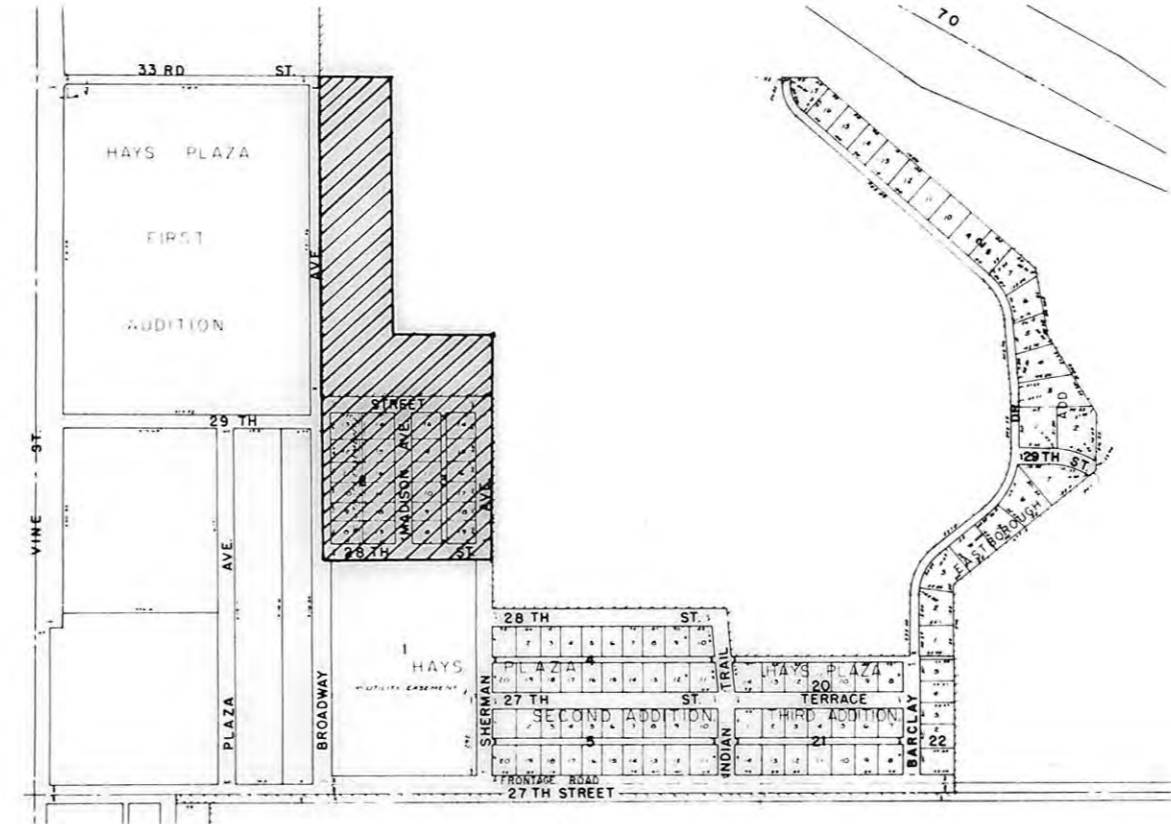
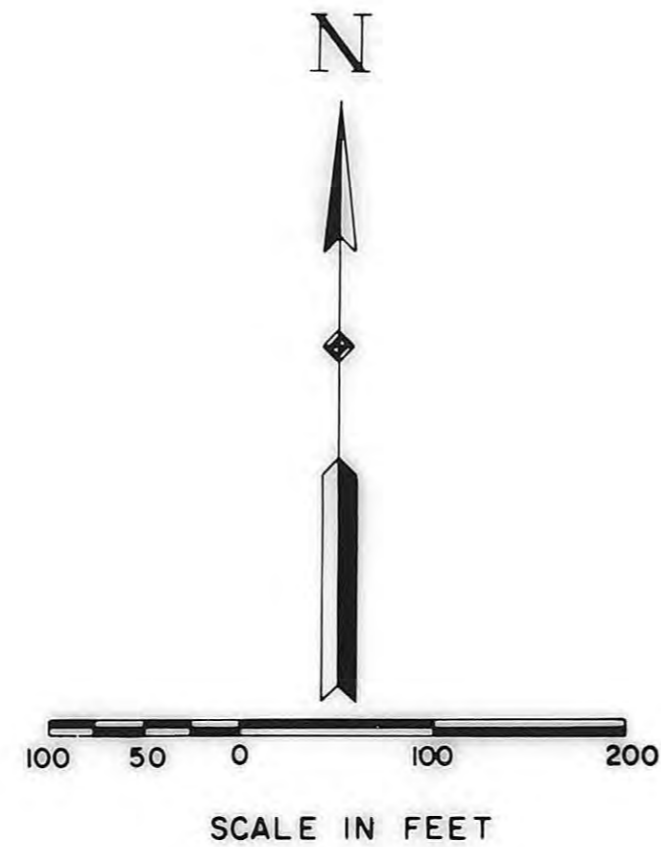


# REPLAT OF BLOCKS 2 & 3 OF REPLAT OF BLOCKS 1, 2 & 3 OF HAYS PLAZA SECOND ADDITION AND OF HAYS PLAZA FOURTH ADDITION HAYS, KANSAS



THIS IS A DIRECT PHOTOGRAPHIC REPRODUCTION OF THE OFFICIAL INSTRUMENT (RECORDED PLAT).  
  
THIS REPRODUCTION WAS MADE BY BUCHER & WILLIS CONSULTING ENGINEERS, PLANNERS & ARCHITECTS IN AUGUST, 1979.

**LEGEND**  
 ● 1/2" Rebar Set  
 ■ 1/4" Rebar Found



**APPROVALS:**  
 This plat of the REPLAT OF BLOCKS 2 & 3 OF REPLAT OF BLOCKS 1, 2 & 3 OF HAYS PLAZA SECOND ADDITION AND OF HAYS PLAZA FOURTH ADDITION has been submitted to and approved by the Hays-Ellis County Planning Commission this 16 day of September, 1974.

Jack D. Ekey  
Chairman  
  
Peggy McCullick  
Secretary  
  
Dale B. Shadle  
Mayor

**RECORDED:**  
 State of Kansas, County of Ellis, ss  
 This is to certify that this instrument was filed for record in the Register of Deeds' Office on the 7 day of October, 1974, in Book 2A, Page 14.

Replat + Dedication Vol 270 - Pg 179  
 Resolution Vol 270 - Pg 183  
Ray Hammerschmidt  
Register of Deeds

Deputy

**LEGAL DESCRIPTION:**  
 A tract of land in the Southwest Quarter of Section 27, Township 13 South, Range 18 West of the Sixth Principal Meridian, Ellis County, Kansas, more particularly described as follows:

Commencing at the Southwest corner of said Section 27; thence Easterly along the South line of said Section 27, a distance of 1,068.20 feet; thence with an angle of 89 degrees 52 minutes to the left, a distance of 853.00 feet to the point of beginning; thence continuing on the previously described course, a distance of 1795.97 feet to a point on the North line of said Southwest Quarter, said point being 1053.20 feet East of the Northwest corner of said Southwest Quarter; thence Easterly along the North line of said Southwest Quarter, a distance of 295.00 feet; thence with an angle of 90 degrees 11 minutes 03 seconds to the right, a distance of 941.23 feet; thence with an angle of 90 degrees 08 minutes to the left, a distance of 340.00 feet; thence with an angle of 90 degrees 08 minutes to the right, a distance of 855.00 feet; thence with an angle of 89 degrees 52 minutes to the right, a distance of 635.00 feet to the point of beginning. Said tract contains 18.837 acres, more or less.

**STREETS, ALLEYS AND EASEMENTS:**  
 Streets, Alleys and Avenues as shown on this plat and not heretofore dedicated to and for public use are hereby so dedicated.

Easements are hereby dedicated for public use, as utility easement right-of-way which are shown as lying between the dashed lines in widths indicated and as set forth on this plat. Said easements may be employed for the purpose of installing, repairing and maintaining gas lines, electric lines, telephone lines, sewer lines, water lines and all other forms and types of public utilities, new or hereafter used, by the public, over, under and along the strips marked "Utility Esm'ts".

**OWNERS CERTIFICATE:**  
 Know all men by these presents, that we, the undersigned property owners of the land above described, have caused the same to be surveyed and platted into lots, blocks, streets, alleys and easements, the same to be known as the Replat of Blocks 2 & 3 of Replat of Blocks 1, 2 & 3 of Hays Plaza Second Addition and of Hays Plaza Fourth Addition to the City of Hays, in Ellis County, Kansas. The Streets, Avenues and Alleys are hereby dedicated to and for the use of the public, and easements as indicated on the accompanying plat are hereby granted to the public for the purpose of constructing, operating, maintaining and repairing all public utilities.

**ORDINANCE NO. 15-1**  
 AN ORDINANCE VACATING A TWENTY FOOT (20') UTILITY EASEMENT, 29th STREET, MADISON AVENUE, ALLEYS, AND BUILDING SET BACK LINES AS SHOWN ON THE RECORDED PLATS OF HAYS PLAZA SECOND ADDITION, REPLAT OF BLOCKS 1, 2, AND 3 OF HAYS PLAZA SECOND ADDITION, AND HAYS PLAZA FOURTH ADDITION, ALL TO THE CITY OF HAYS, KANSAS.  
 Book: 352 Pg: 135

LeRoy R. Weber  
LeRoy R. Weber  
  
Betty L. Weber  
Betty L. Weber  
HAYS PLAZA, INC.  
  
William F. Aubel  
William F. Aubel, President  
  
Van L. Hartman  
Van L. Hartman, Secretary

**NOTARY CERTIFICATE:**  
 State of Kansas, County of Ellis, ss  
 Be it remembered that on this 13th day of September, 1974, before me, a notary public in and for said County and State, came LeRoy R. Weber, Betty L. Weber and William F. Aubel, President of Hays Plaza, Inc. and Van L. Hartman, Secretary of Hays Plaza, Inc., to me personally known to be the same persons who executed the foregoing instrument of writing and duly acknowledged the execution of same. In testimony whereof, I have hereunto set my hand and affixed my notarial seal the day and year above written.

Lenore Goetz  
Notary Public

My Commission Expires:  
June 21, 1978.

**SURVEYOR'S CERTIFICATE:**  
 I, a licensed professional engineer in the State of Kansas, do hereby certify this plat to be true and correct to the best of my knowledge; and that all iron bars as shown have been accurately set. Said survey was completed on August 23, 1974.

PREPARED BY  
**BUCHER & WILLIS**  
 CONSULTING ENGINEERS, PLANNERS & ARCHITECTS  
Raymond E. Lamfers  
 Raymond E. Lamfers  
 Hays, Kansas

