

HAYS PLAZA SECOND ADDITION

TO THE CITY OF HAYS KANSAS

LEGAL DESCRIPTION:

A tract of land in the Southwest one-quarter of Section 27, Township 13 South, Range 18 West of the Sixth Principal Meridian, Ellis County, Kansas and further described as follows:

Beginning at a point on the South line of Section 27, 1,068.20 feet East of the Southwest corner of said Section 27; thence North with an internal angle of 89 degrees 52 minutes, 1,461 feet; thence East with an internal angle of 90 degrees 08 minutes parallel to the South line of Section 27, 635 feet; thence South with an internal angle of 89 degrees 52 minutes, 776 feet; thence East with an external angle of 89 degrees 52 minutes, parallel to the South line of Section 27, 865.20 feet; thence Southeasterly with an internal angle of 94 degrees 26 minutes 26 seconds, 310.99 feet; thence South with an internal angle of 175 degrees 25 minutes 34 seconds, 375 feet to a point on the South line of Section 27; thence West along the South line of Section 27, 1,525 feet to the point of beginning.

OWNER'S CERTIFICATE:

This is to certify that the undersigned is the owner of the land described in the plat, and that he has caused the same to be surveyed and subdivided as indicated thereon, for the uses and purposes therein set forth, and does hereby acknowledge and adopt the same under the style and title thereon indicated.

All street rights-of-way as shown on this plat are hereby dedicated to the public. An easement or license to the public to locate, construct and maintain or authorize the location, construction and maintenance of poles, wires, conduits, water, gas and sewer pipes or required drainage channels or structures upon the area marked for easements on this plat is hereby granted.

Given under my hand at Hays, Kansas this 21 day of February, A.D., 1968.

HAYS PLAZA, INCORPORATED

Max Hoffman, President

Kenneth D. Boomhower, Secretary

NOTARY CERTIFICATE:

I, a Notary Public in and for Ellis County, in the State of Kansas, do hereby certify that Max Hoffman, President of the Hays Plaza, Incorporated and Kenneth D. Boomhower, Secretary of Hays Plaza, Incorporated, personally known to me to be the same persons whose names are subscribed to the foregoing instrument as such owners, appeared before me this day in person and acknowledged that they signed and delivered the plat as their own free and voluntary act for the uses and purposes herein set forth.

Given under my hand and Notarial Seal this 21 day of February, A.D., 1968.

Robert D. Doolittle, Notary Public

My commission expires 3-25-71.

CITY CLERK CERTIFICATE:

I hereby certify that this plat was first submitted to the City Planning Commission and by the City Planning Commission to the Governing Body of the City of Hays, Kansas, and by such Governing Body duly approved on February 13, 1968.

Given under my hand and seal at Hays, Kansas, this 22 day of February, A.D., 1968.

Robert D. Doolittle, City Clerk

SURVEYOR'S CERTIFICATE:

I, a licensed professional engineer, do hereby certify this plat to be true and correct to the best of my knowledge.

Signed this 23 day of February, 1968.

John W. Smith, Engineer

ORDINANCE NO. 2529
 AN ORDINANCE VACATING A TWENTY FOOT (20') UTILITY EASEMENT, 29th STREET, MADISON AVENUE, ALLEYS, AND BUILDING SET BACK LINES AS SHOWN ON THE RECORDED PLATS OF HAYS PLAZA SECOND ADDITION, REPLAT OF BLOCKS 1, 2, AND 3 OF HAYS PLAZA SECOND ADDITION, AND HAYS FOURTH ADDITION, ALL TO THE CITY OF HAYS, KANSAS.
 Book: 352, Pg: 135

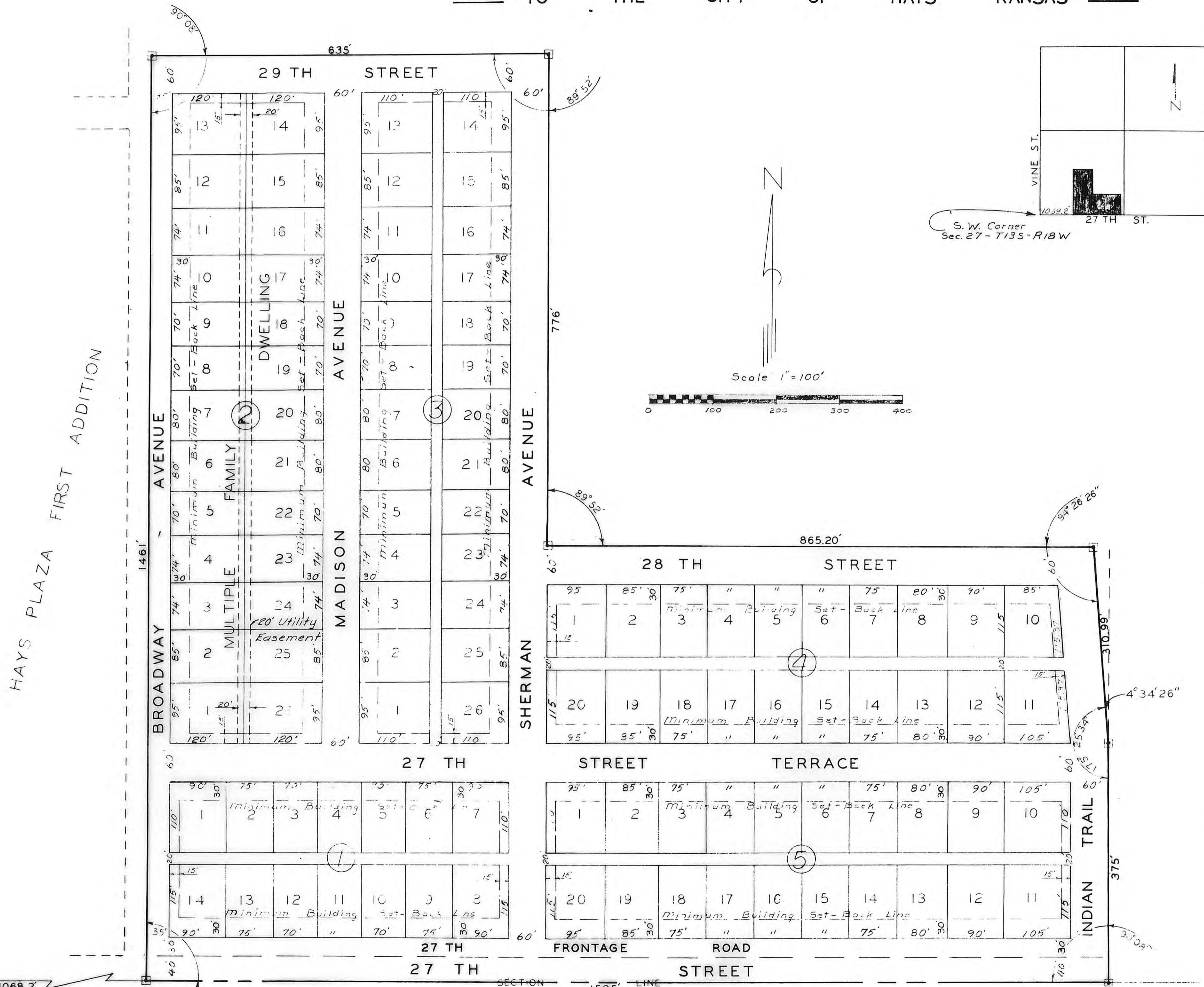
STATE OF KANSAS
 ELLIS COUNTY
 This instrument was filed for record
 MAR 13 1968
 8:00 o'clock P.M. recorded in
 Book 352, Page 135
 Fees... \$11.50
 Register of Deeds

Ordinance
 Plat
 Dedication
 Resolution
 239-501
 2-110
 239-509
 239-514

APPROVALS:

CITY OF HAYS PLANNING COMMISSION CERTIFICATE:
 Approved this 20th day of February, A.D., 1968.
 CITY OF HAYS PLANNING COMMISSION, ELLIS COUNTY, KANSAS

James E. Kuebel, Chairman
ATTEST:
James E. Kuebel, Secretary



Southwest Corner
 Sec. 27 - T13S - R18W

THIS IS A DIRECT PHOTOGRAPHIC REPRODUCTION OF THE OFFICIAL INSTRUMENT (RECORDED PLAT).
 THIS REPRODUCTION WAS MADE BY BUCHER & WILLIS, CONSULTING ENGINEERS, PLANNERS & ARCHITECTS IN NOVEMBER, 1979.

Note: 1/2" Iron Rebar Placed at Lot Corners
 All Lots Are Single Family Dwelling Unless Indicated Otherwise.

Acres - 35.21 A.

DESIGNED BY JMS	JOHN W. SMITH CONSULTING ENGINEER AND ASSOCIATES HAYS KANSAS
DRAWN BY JMS	
CHECKED BY JMS	
DATE June 67	JOB NO. 67-218
HAYS PLAZA SECOND ADDITION	
HAYS KANSAS	

SHEET 1 OF 1