

HAYS PLAZA THIRD ADDITION

LEGAL DESCRIPTION:

A tract of land in the South one-half of Section 27, Township 13 South, Range 18 West of the Sixth Principal Meridian, Ellis County, Kansas, and further described as follows:

Beginning at a point on the South line of Section 27, 2,593.20 feet East of the Southwest corner of Section 27; thence North with an internal angle of 89 degrees 52 minutes 26 seconds from the Section line 375 feet; thence Northwesterly with an internal angle of 184 degrees 34 minutes 26 seconds, 135.43 feet; thence East with an internal angle of 85 degrees 33 minutes 34 seconds and parallel to the South line of Section 27, 812.79 feet; thence South with an internal angle of 90 degrees 00 minutes, 510 feet to the South line of Section 27; thence West along the South line of Section 27, 803.18 feet to the point of beginning.

OWNER'S CERTIFICATE:

This is to certify that the undersigned is the owner of the land described in the plat, and that he has caused the same to be surveyed and subdivided as indicated thereon, for the uses and purposes therein set forth, and does hereby acknowledge and adopt the same under the style and title thereon indicated.

All street rights-of-way as shown on this plat are hereby dedicated to the public. An easement or license to the public to locate, construct and maintain or authorize the location, construction and maintenance of poles, wires, conduits, water, gas and sewer pipes or required drainage channels or structures upon the area marked for easements on this plat is hereby granted.

Given under my hand at Hays, Kansas this 21 day of February, A.D., 1968

HAYS PLAZA, INCORPORATED

Max Hoffman, President
Kenneth D. Boomhower, Secretary

NOTARY CERTIFICATE:

I, a Notary Public in and for Ellis County, in the State of Kansas, do hereby certify that Max Hoffman, President of the Hays Plaza, Incorporated and Kenneth D. Boomhower, Secretary of Hays Plaza, Incorporated, personally known to me to be the same persons whose names are subscribed to the foregoing instrument as such owners, appeared before me this day in person and acknowledged that they signed and delivered the plat as their own free and voluntary act for the uses and purposes herein set forth.

Given under my hand and Notarial Seal this 21 day of February, A.D., 1968

Carl E. D... ..
Notary Public

My commission expires 7-28-71

CITY CLERK CERTIFICATE:

I hereby certify that this plat was first submitted to the City Planning Commission and by the City Planning Commission to the Governing Body of the City of Hays, Kansas, and by such Governing Body duly approved on February 23, 1968

Given under my hand and seal at Hays, Kansas, this 14 day of March, A.D., 1968

...
City Clerk

SURVEYOR'S CERTIFICATE:

I, a licensed professional engineer, do hereby certify this plat to be true and correct to the best of my knowledge.

Signed this 23 day of February, 1968

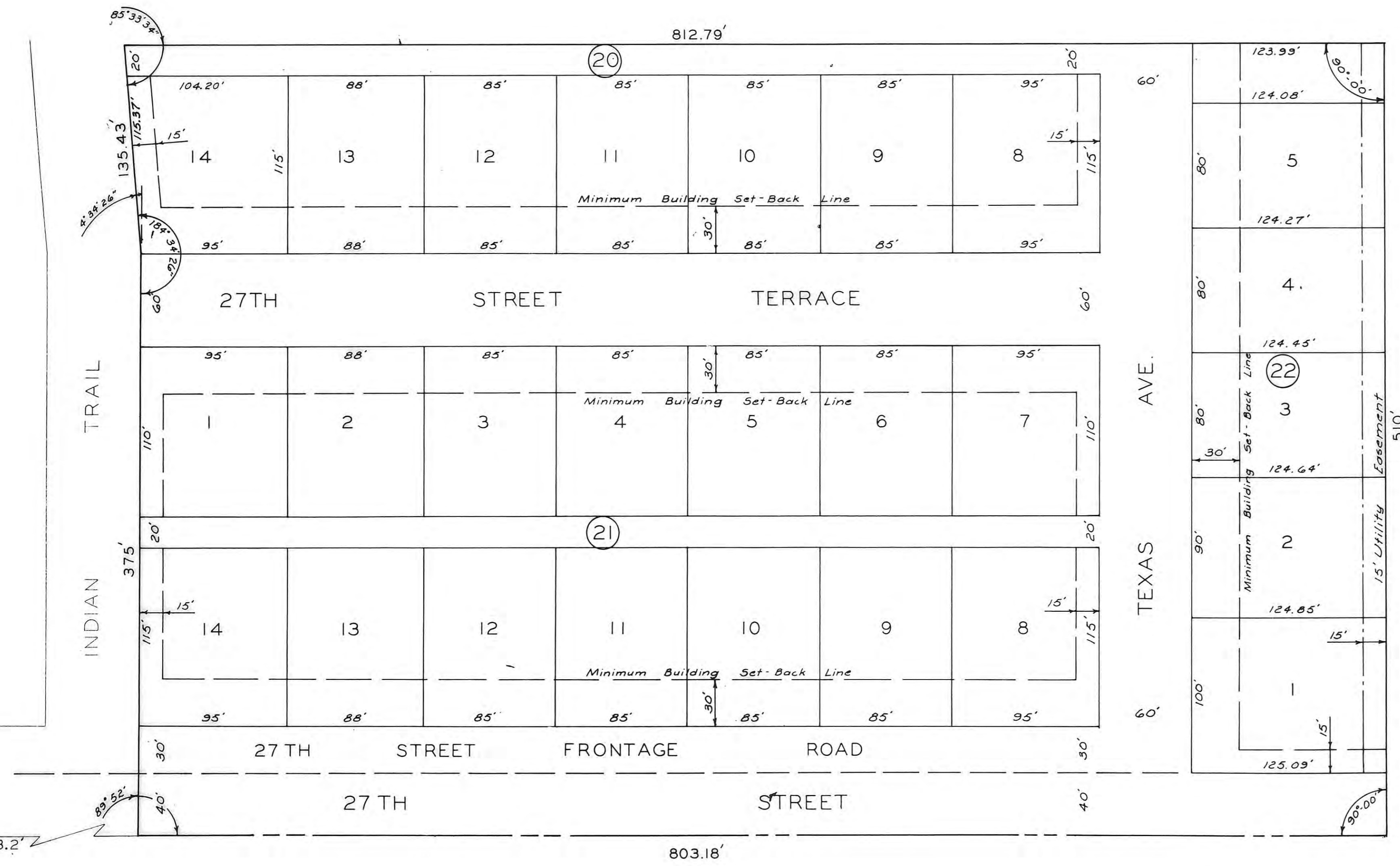
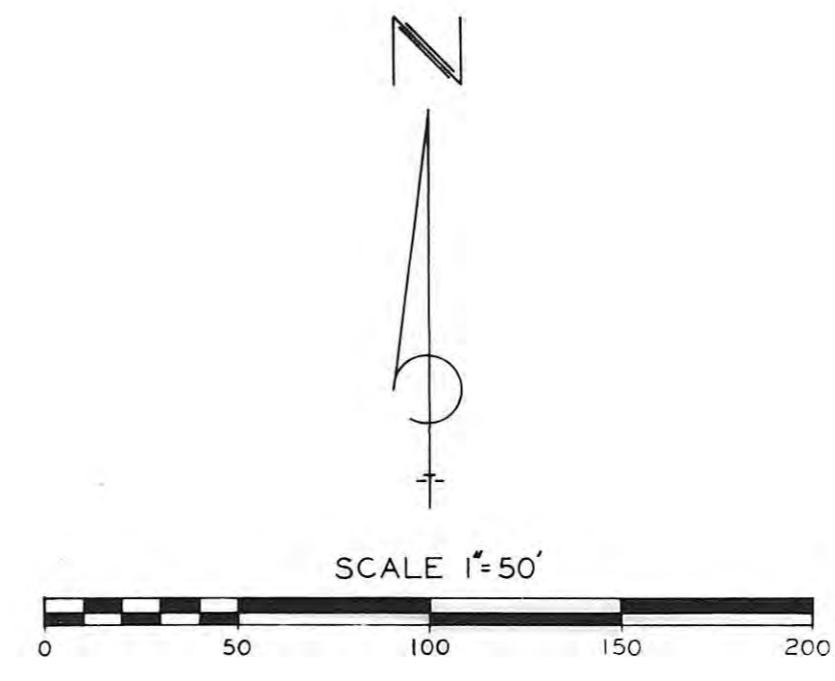
John W. Smith
Engineer

THIS PLAT APPROVED THIS 11 DAY OF MARCH, 1968
BY THE COUNTY COMMISSIONERS OF ELLIS COUNTY, KANSAS.
W. Braun
CHAIRMAN

APPROVALS:
CITY OF HAYS PLANNING COMMISSION CERTIFICATE:
Approved this 20th day of February, A.D., 1968.
CITY OF HAYS PLANNING COMMISSION, ELLIS COUNTY, KANSAS

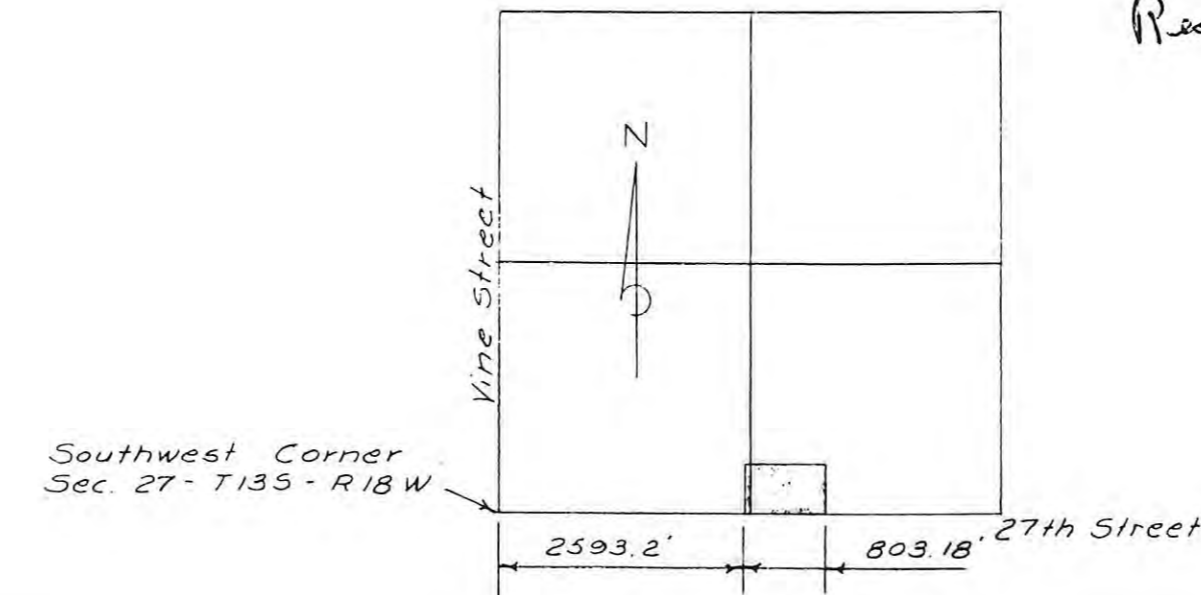
ATTEST:
..., Chairman
..., Secretary

DESIGNED BY J.W.S.	JOHN W. SMITH CONSULTING ENGINEER AND ASSOCIATES
DRAWN BY LAD	
CHECKED BY RM	
DATE Feb/68	JOB NO. 68-209
HAYS PLAZA THIRD ADDITION	
ELLIS COUNTY — KANSAS	



STATE OF KANSAS }
ELLIS COUNTY }
This instrument was filed for record
MAR 18 1968
8:00 o'clock P.M. recorded in
A.D. of 1968 page 513
Fees: \$2.68
5.00
12.00
2.60
814.60
Register of Deeds

Plat 2-111
Destruction 239-515
Resolution 239-520



THIS IS A DIRECT PHOTOGRAPHIC REPRODUCTION OF THE OFFICIAL INSTRUMENT (RECORDED PLAT).
THIS REPRODUCTION WAS MADE BY BUCHER & WILLIS, CONSULTING ENGINEERS, PLANNERS & ARCHITECTS IN NOVEMBER, 1979.