

PLAT OF HAYS PLAZA FOURTH ADDITION HAYS, KANSAS

ORDINANCE NO. 2519
AN ORDINANCE VACATING A TWENTY FOOT (20') UTILITY EASEMENT, 29th STREET, HADISON AVENUE, ALLEYS, AND BUILDING SET BACK LINES AS SHOWN ON THE RECORDED PLATS OF HAYS PLAZA SECOND ADDITION, REPLAT OF BLOCKS 1, 2, AND 3 OF HAYS PLAZA SECOND ADDITION, AND HAYS FOURTH ADDITION, ALL TO THE CITY OF HAYS, KANSAS.
Book: 352 Pg. 135

LEGAL DESCRIPTION:

A tract of land in the Southwest Quarter of Section 27, Township 13 South, Range 18 West of the Sixth Principal Meridian, Ellis County, Kansas, more particularly described as follows:

Commencing at the Northwest Corner of the Southwest Quarter of said Section 27; thence Easterly along the North line of said Southwest Quarter a distance of 1053.20 feet to the point of beginning; thence continuing along the North line of said Southwest Quarter a distance of 295.00 feet; thence with an angle of 90°11'03" to the right, a distance of 1188.23 feet; thence with an angle of 89°52' to the right, a distance of 295.00 feet; thence with an angle of 90°08' to the right, a distance of 1187.97 feet to the point of beginning. Said tract contains 8.045 acres, more or less.

STREETS AND EASEMENTS

Streets and avenues shown on this plat and not heretofore dedicated for public use and said easements may be employed for the purpose of installing, repairing and maintaining utility poles and wires, gas lines, water lines, sewer pipe, drainage channels or structures and all other forms and types of public utilities now or hereafter used by the public over, under and along the strips marked "easements".

OWNER'S CERTIFICATE

Know all men by these presents, that we, the undersigned property owners of the land above described, have caused the same to be surveyed and platted into lots, blocks, streets, alleys, easements and pedestrian walkway, the same to be known as HAYS PLAZA FOURTH ADDITION to the City of Hays, in Ellis County, Kansas. The streets, alleys and pedestrian walkways are hereby dedicated to and for the use of the public, and easements as indicated on the accompanying plat are hereby granted to the public for the purpose of constructing, operating, maintaining and repairing all public utilities.

HAYS PLAZA, INC.

William F. Aubel
William F. Aubel, President
Van L. Hartman
Van L. Hartman, Secretary

NOTARY CERTIFICATE

State of Kansas, County of Ellis, ss

Be it remembered that on this 13th day of February, 1974, before me, a notary public in and for said County and State, came William F. Aubel, president of the Hays Plaza, Inc., and Van L. Hartman, Secretary of Hays Plaza, Inc., to me personally known to be the same persons who executed the foregoing instrument of writing and duly acknowledged the execution of same. In testimony whereof, I have hereunto set my hand and affixed my notarial seal the day and year above written.

Lenore Gutz
Notary Public

My Commission Expires

June 21, 1974

SURVEYOR'S CERTIFICATE:

I, a licensed professional engineer in the State of Kansas, do hereby certify this plat to be true and correct to the best of my knowledge; and that all iron bars as shown have been accurately set. Said survey was completed on January 29, 1974.

Raymond E. Lamfers
Raymond E. Lamfers



APPROVALS

This plat of HAYS PLAZA FOURTH ADDITION has been submitted to and approved by the City of Hays Planning Commission this 25th day of February, 1974.

Jack O. Shuy
Chairman
Raymond M. Cullick
Secretary

The dedication shown on this plat is accepted by the City Commission of the City of Hays, Kansas, this 28th day of February, 1974.

Henry J. Hays
Mayor

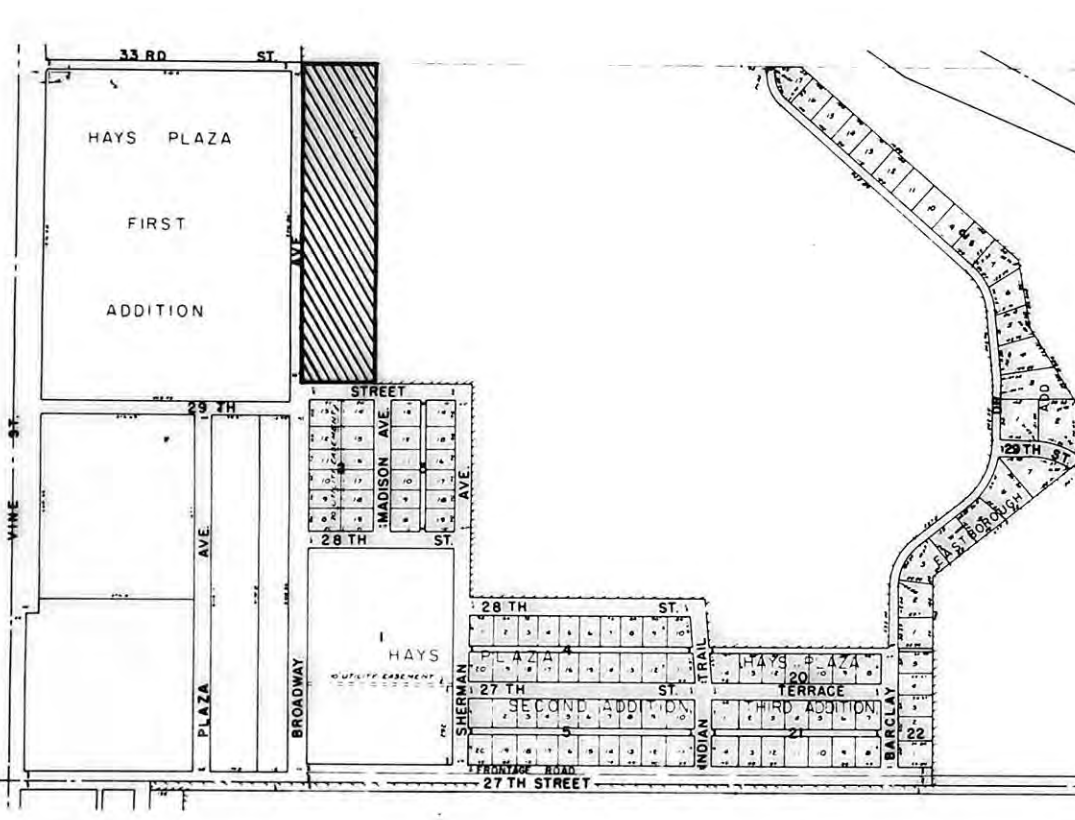
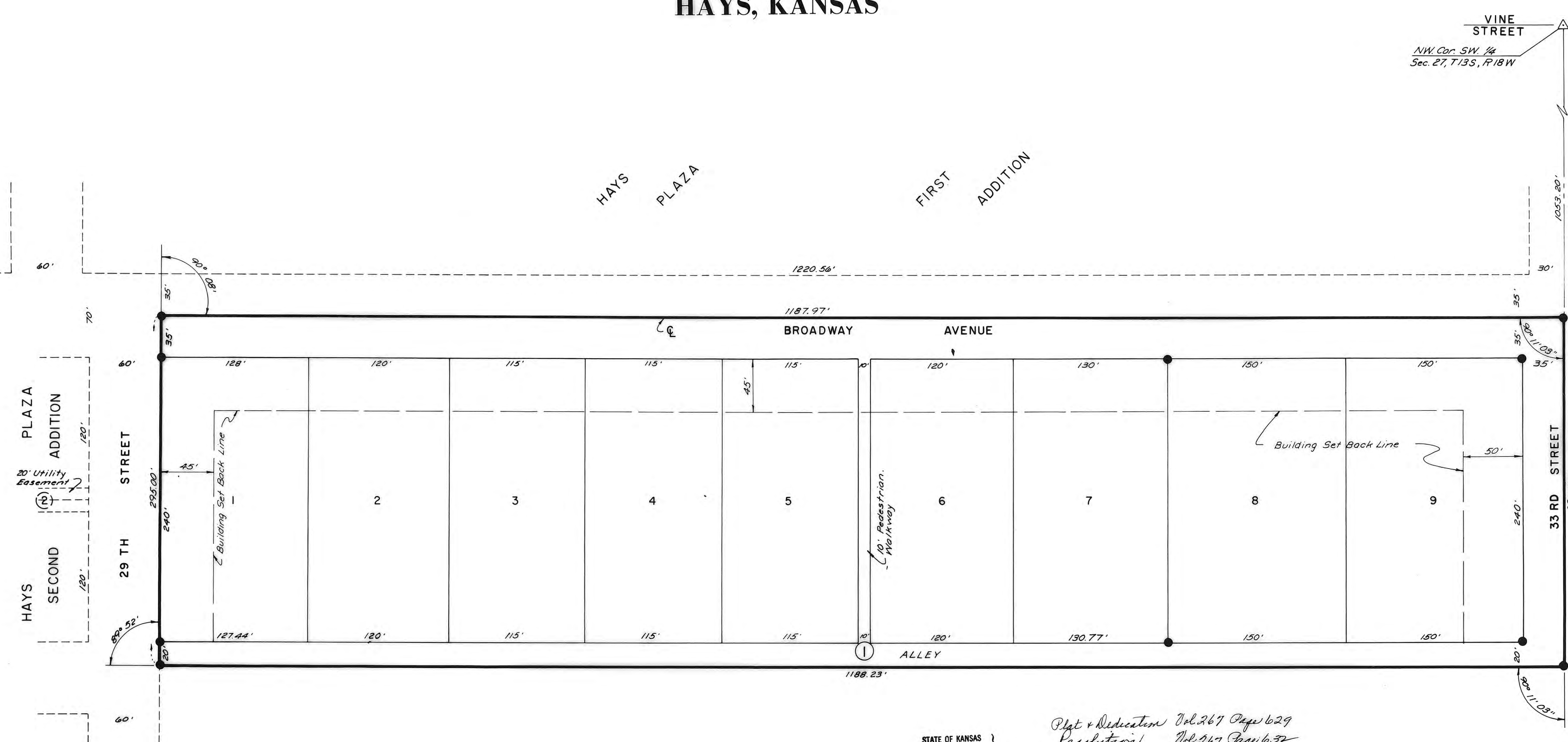
Attest: *Arvid Schuller* City Clerk

RECORDED

State of Kansas, County of Ellis, ss

This is to certify that this instrument was filed for record in the Register of Deeds office on the _____ day of _____, 1974, in Book _____, Page _____.

Register of Deeds Deputy

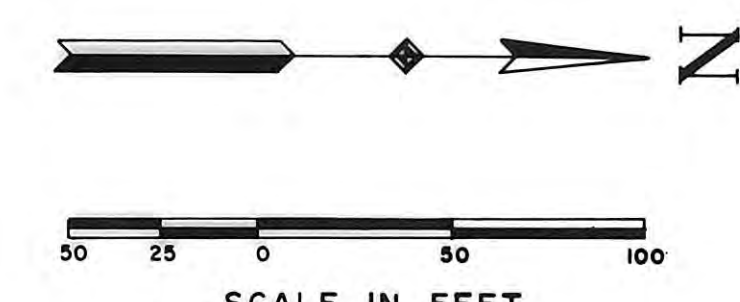


LEGEND
● 1/2" Iron Bar Set
△ Nail Set

THIS IS A DIRECT PHOTOGRAPHIC REPRODUCTION OF THE OFFICIAL INSTRUMENT (RECORDED PLAT).
THIS REPRODUCTION WAS MADE BY BUCHER & WILLIS, CONSULTING ENGINEERS, PLANNERS & ARCHITECTS IN AUGUST, 1979.

STATE OF KANSAS }
ELLIS COUNTY }
This instrument was filed for record
MAR 7 1974
10:32 o'clock A.M. recorded in
of _____ page _____
Fees \$50.00
Register of Deeds

Plat & Dedication Vol. 267 Page 629
Resolution Vol. 267 Page 637



PREPARED BY
BUCHER & WILLIS
CONSULTING ENGINEERS, PLANNERS & ARCHITECTS