

REPLAT OF BLOCKS 1, 2, & 3 OF "HAYS PLAZA SIXTH ADDITION AND REPLAT OF BLOCK FOUR HAYS PLAZA SECOND ADDITION" HAYS, KANSAS

LEGAL DESCRIPTION:

All of Blocks 1, 2, and 3 of "Hays Plaza Sixth Addition And Replat Of Block 4 Hays Plaza Second Addition" to the City of Hays, Ellis County, Kansas, described as follows:

A tract of land in the the East Half of the Southwest Quarter (E 1/2 SW 1/4) of Section 27, Township 13 South, Range 18 West of the Sixth Principal Meridian, Ellis County, Kansas, and more particularly described as follows:

Commencing at the Southwest corner of Section 27, Township 13 South, Range 18 West; THENCE on an assumed bearing of North 90 degrees 00 minutes 00 seconds East along the South line of said Section 27, a distance of 1,703.20 feet; THENCE on a bearing of North 00 degrees 08 minutes 00 seconds East a distance of 385.00 feet; THENCE on a bearing of North 90 degrees 00 minutes 00 seconds East a distance of 10.00 feet to the point of beginning; THENCE continuing on the last described course a distance of 493.04 feet; THENCE on a bearing of North 4 degrees 26 minutes 26 seconds West a distance of 271.06 feet; THENCE on a curve to the right having a radius of 178.06 feet, a chord bearing of North 2 degrees 05 minutes 40 seconds East a chord distance of 149.09 feet, and an arc length of 149.42 feet; THENCE on a bearing of North 8 degrees 37 minutes 46 seconds East a distance of 407.41 feet; THENCE on a curve to the left having a radius of 178.06 feet, a chord bearing of North 2 degrees 13 minutes 39 seconds West, a chord distance of 67.08 feet, and an arc distance of 67.48 feet; THENCE on a bearing of North 13 degrees 05 minutes 05 seconds West a distance of 235.01 feet; THENCE on a curve to the left having a radius of 431.06 feet, a chord bearing of North 20 degrees 20 minutes 05 seconds West, a chord distance of 108.80 feet, and an arc distance of 109.09 feet; THENCE on a bearing of North 27 degrees 35 minutes 05 seconds West a distance of 148.10 feet; THENCE on a bearing of South 62 degrees 24 minutes 55 seconds West a distance of 101.21 feet; THENCE on a curve to the right having a radius of 540.00 feet, a chord bearing of South 76 degrees 12 minutes 27 seconds West, a chord distance of 257.48 feet, and an arc distance of 259.98 feet; THENCE on a bearing of South 90 degrees 00 minutes 00 seconds West a distance of 33.78 feet; THENCE on a bearing of South 00 degrees 08 minutes 00 seconds West a distance of 1243.00 feet to the point of beginning. Said tract contains 14.456 acres.

APPROVALS:

This Plat, Replat of Blocks 1, 2, & 3 of Hays Plaza Sixth Addition, has been submitted to and approved by the Hays Planning Commission this 16th day of October, 2000.

Larry Howl
CHAIRMAN
Due Baldrá
SECRETARY

The dedications shown on this Plat accepted by the City Commission of the City of Hays, Kansas this 26th day of October, 2000.

Troy Hickman
MAYOR



ATTEST: *John A. Bird* City Clerk

John A. Bird, Attorney for the City of Hays

REVIEW SURVEYOR'S CERTIFICATE:

State of Kansas, County of Ellis, ss:

I hereby certify that the review of this plat was found to be in compliance with the requirements of K.S.A. 58-2005. Approved this 6th day of Dec, 2000.

RECORDED:

State of Kansas, County of Ellis, ss:

This is to certify that this instrument was filed for record in the Register of Deeds Office on the 6th day of December, 2000 in Book Cat Page 379.

SURVEYOR'S CERTIFICATE:

I, Harvey Ruder, a Registered Land Surveyor in the State of Kansas, do hereby certify this Plat to be true and correct to the best of my knowledge.

Harvey Ruder
Harvey Ruder Date 10-24-00



STREETS & EASEMENTS:

Streets, drives, and circles as shown on this plat and not heretofore dedicated to and for public use are hereby dedicated. Easements are hereby dedicated for public use, as utility easement right-of-way, which are shown as lying between the dashed lines in widths indicated and as set forth on this plat, and said easements may be employed for the purpose of installing, repairing and maintaining gas lines, electric lines, telephone lines and all other forms and types of public utilities, now or heretofore used, by the public, over, under, and along the strips marked "Utility Esm't."

OWNER'S CERTIFICATE:

Know all men by these presents, that I, the undersigned property owner of the land above described have caused the same to be surveyed and platted into Lots, Blocks, Streets, Drives, Circles and Easements, the same to be known as "Replat of Blocks 1, 2, & 3 of Hays Plaza Sixth Addition" in Hays, Kansas. The Streets, Drives and Circles are hereby dedicated to and for the use of the public, and the easements as indicated on the accompanying plat are hereby granted to the public for the purpose of constructing, operating, maintaining, and repairing all public utilities.

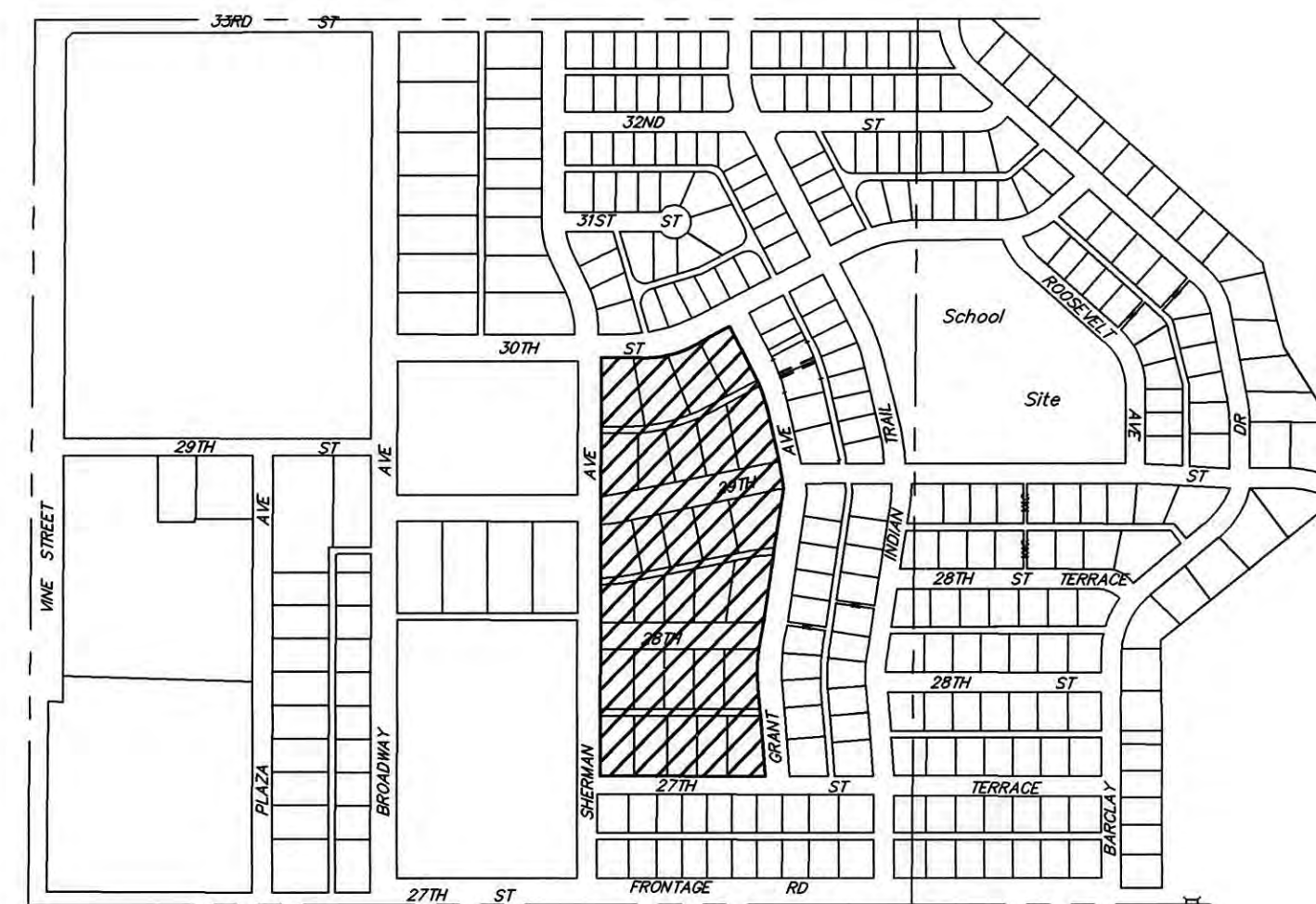
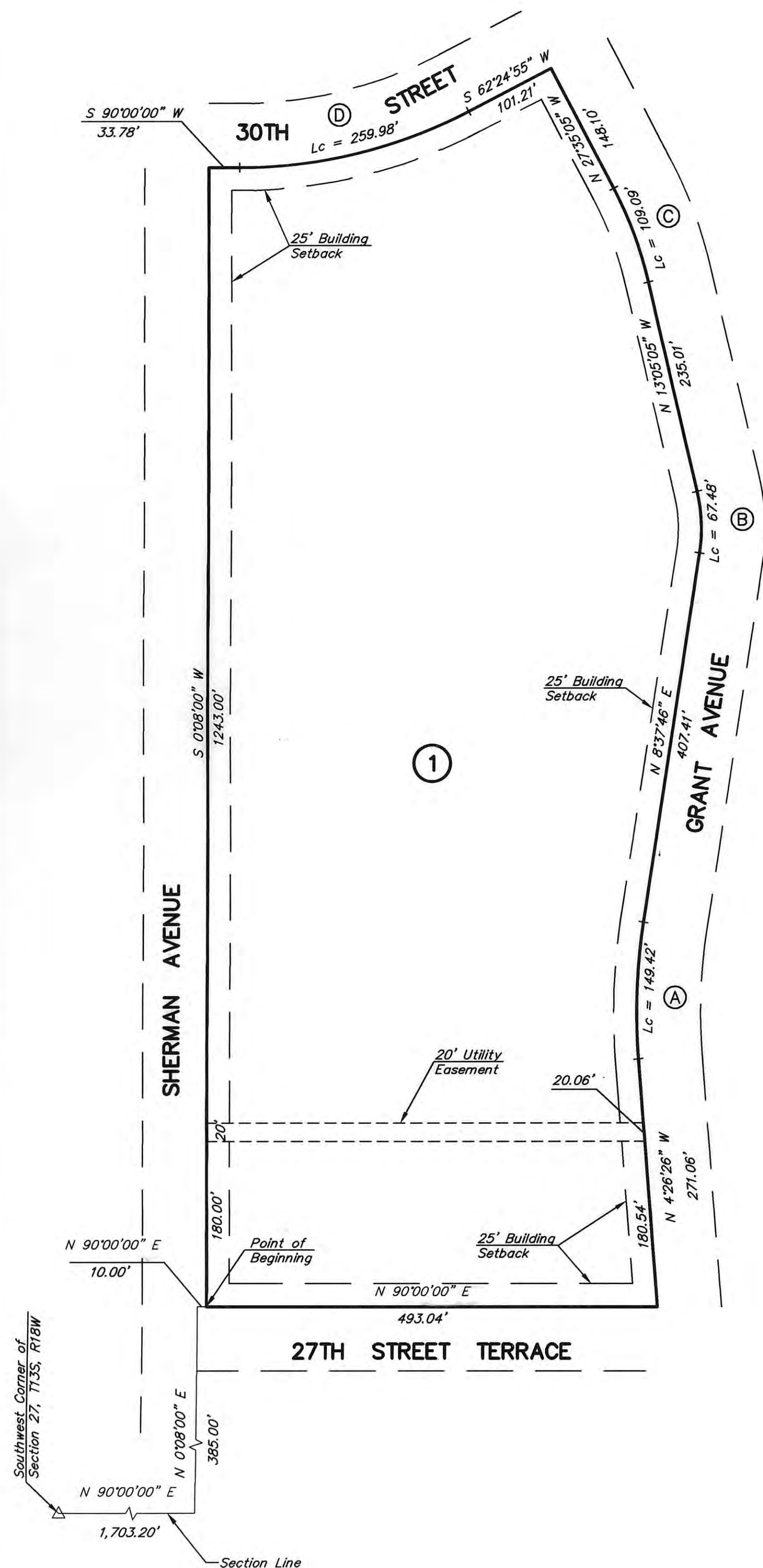
City of Hays
By *Troy Hickman*
Mayor, Troy Hickman

NOTARY CERTIFICATE:

State of Kansas, County of Ellis, ss:

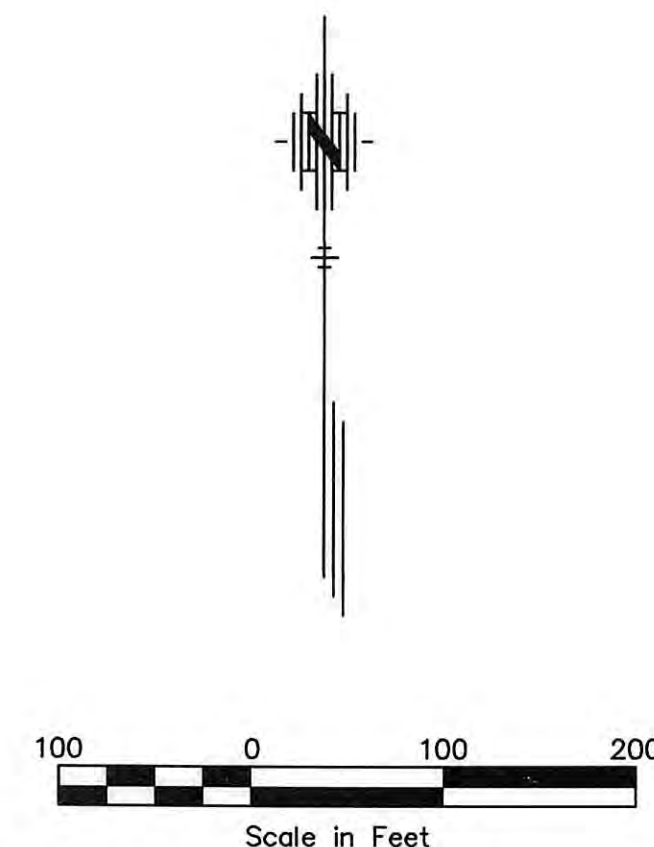
Be it remembered that on this 26 day of Oct, 2000, before me, a Notary Public in and for said County and State, came Troy Hickman, to me personally known to be the same person who executed the foregoing instrument of writing and duly acknowledged the execution of same. In testimony whereof, I have hereunto set my hand and affixed my notarial seal, the day and year above written.

My Commission Expires 10-24-00
Carol Sue Berger
Notary Public



LOCATION MAP

CURVE DATA				
CURVE	Δ	R	T	Lc
(A)	13°04'12"	655.00'	75.03'	149.42'
(B)	21°42'51"	178.06'	34.15'	67.48'
(C)	14°30'00"	431.06'	54.84'	109.09'
(D)	27°35'05"	540.00'	132.56'	259.98'



PROJECT NAME: Replat of Hays Plaza Park
 PROJECT No.: 09-041
 DRAW NAME: K:\2000-041\addblock-replat\addblock-replat.dwg
 LAST EDIT DATE: 10-24-00