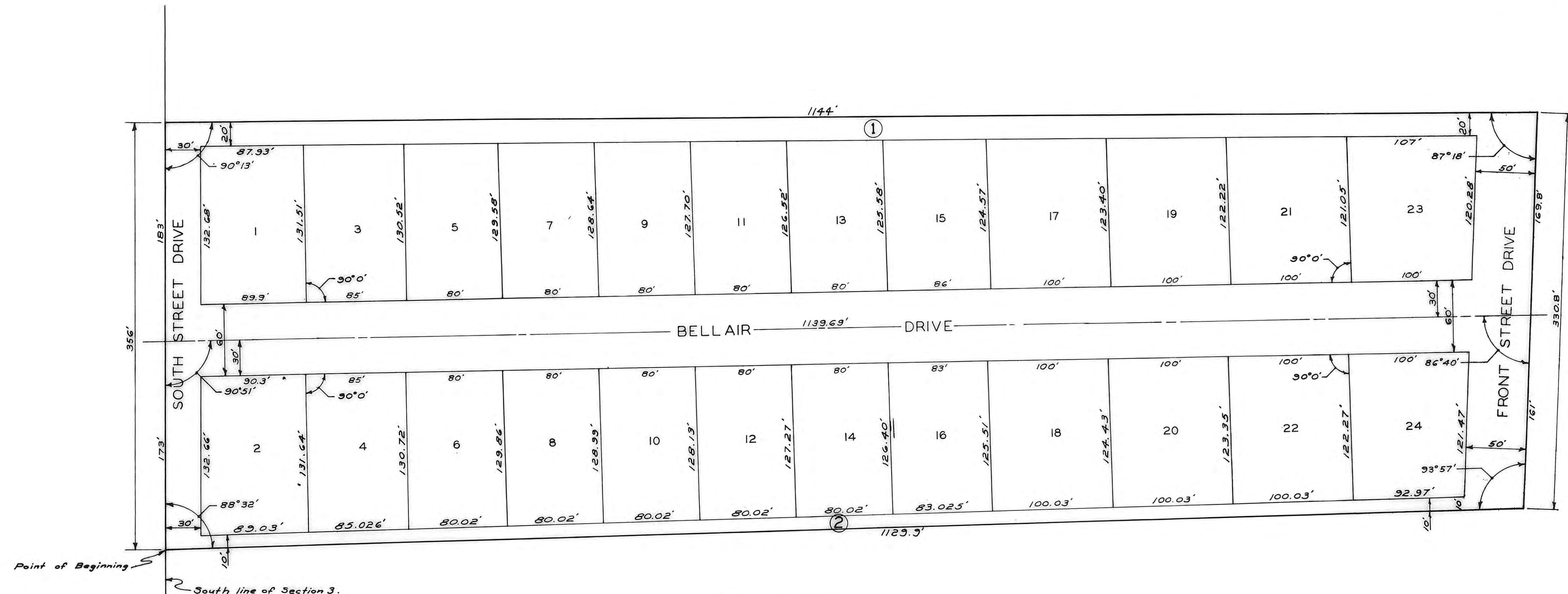
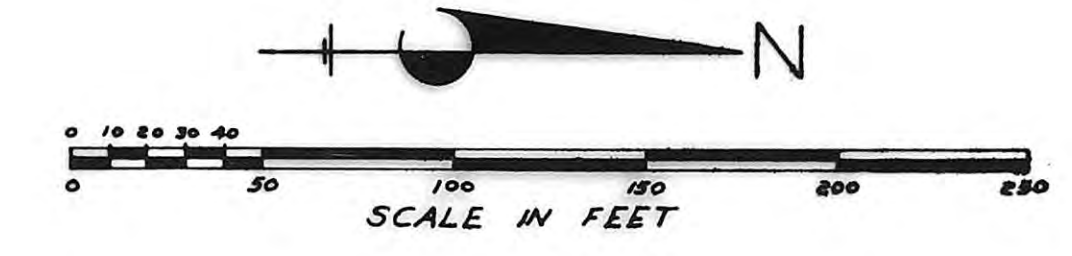


HERMAN'S FIRST ADDITION



LEGAL DESCRIPTION

A TRACT OF LAND IN THE SOUTHEAST ONE-QUARTER OF SECTION 3, TOWNSHIP 14 SOUTH, RANGE 18 WEST OF THE SIXTH PRINCIPAL MERIDIAN, ELLIS COUNTY, KANSAS AND FURTHER DESCRIBED AS FOLLOWS:

BEGINNING AT A POINT ON THE SOUTH LINE OF SECTION 3 AND 1081 FEET WEST OF THE SOUTHEAST CORNER OF SAID SECTION 3; THENCE WEST ALONG THE SOUTH LINE OF SECTION 3, 356 FEET; THENCE NORTH WITH AN INTERNAL ANGLE OF 90 DEGREES 13 MINUTES, 1144 FEET TO A POINT ON THE SOUTH RIGHT-OF-WAY LINE OF U.S. HIGHWAY 40 BY-PASS; THENCE EAST ALONG SAID RIGHT-OF-WAY LINE WITH AN INTERNAL ANGLE OF 87 DEGREES 18 MINUTES, 330.8 FEET; THENCE SOUTH WITH AN INTERNAL ANGLE OF 93 DEGREES 57 MINUTES, 1129.9 FEET TO THE POINT OF BEGINNING.

ENGINEER'S CERTIFICATE

I, JOHN W. SMITH, A LICENSED PROFESSIONAL ENGINEER, DO HEREBY CERTIFY THIS PLAT TO BE TRUE AND CORRECT TO THE BEST OF MY KNOWLEDGE.

SIGNED THIS 27 DAY OF May

John W. Smith
JOHN W. SMITH, P.E.

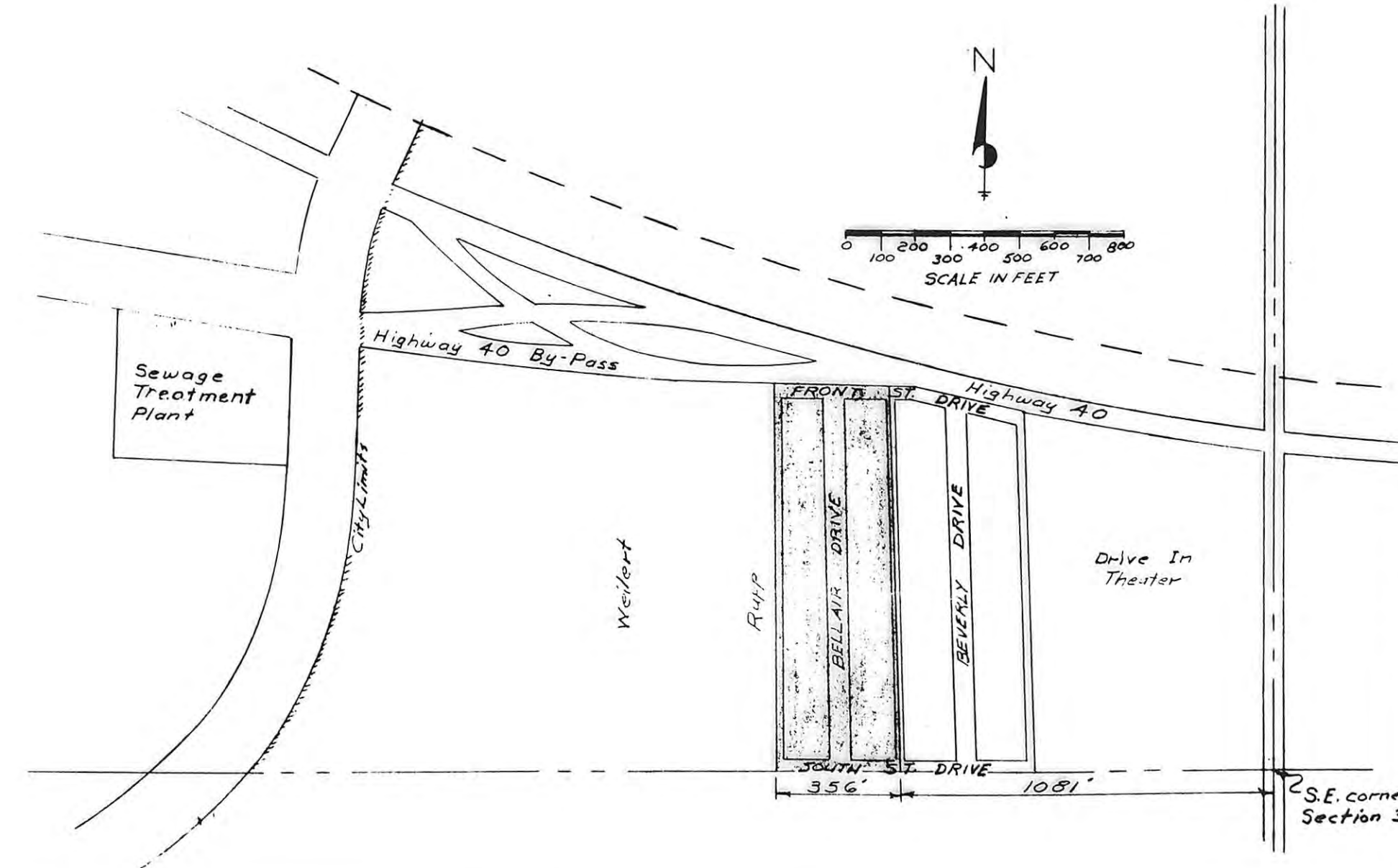
I HEREBY CERTIFY THAT THIS PLAT WAS FIRST SUBMITTED TO THE CITY PLANNING COMMISSION AND BY THE CITY PLANNING COMMISSION TO THE GOVERNING BODY OF THE CITY OF HAYS, KANSAS, AND BY SUCH GOVERNING BODY DULY APPROVED ON May 27, 1965.

Dorothy Soderblom
DOROTHY SODERBLOM
CITY CLERK

STATE OF KANSAS
ELLIS COUNTY
This instrument was filed for record

JUN 3 1965
8:00 o'clock P.M. recorded in
of 220 page 98
Fees \$2.00 Register of Deeds
\$5.00 stamps

Plate Dedication 220-712
Resolution City Comm. 220-714
Resolution Co. Comm. 220-715



THIS IS A DIRECT PHOTOGRAPHIC REPRODUCTION OF THE OFFICIAL INSTRUMENT (RECORDED PLAT).

THIS REPRODUCTION WAS MADE BY BUCHER & WILLIS CONSULTING ENGINEERS, PLANNERS & ARCHITECTS IN NOVEMBER, 1979.

DESIGNED BY	JOHN W. SMITH
DRAWN BY	CON CONSULTING ENGINEER AND ASSOCIATES
CHECKED BY	JWS
DATE	April 1965
JOB NO.	65-205
HAYS	KANSAS

HERMAN'S FIRST ADDITION

SHEET 1 OF 1

8.95 Acres