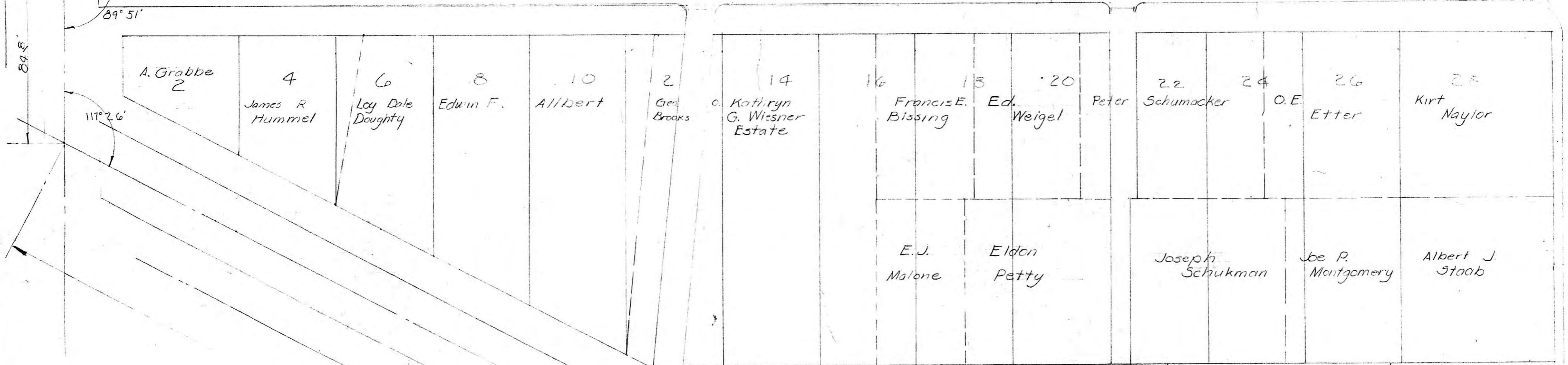


790E'

19TH STREET

90°



Kathryn G. Wiesner Estate Albert J. Staab

Kathryn Hoffman

LEBOUR ALLEN CO. Add. Ethel Moore. Paul E. Fairbanks.

ELM STREET

SURVEY OF HIGHLAND ADDITION
HAYS, KANSAS

AUGUST 9, 1954

HAROLD A. ROYCE
ARCHITECTURAL & ENGINEERING
SERVICE

HAYS KANSAS



62°43'