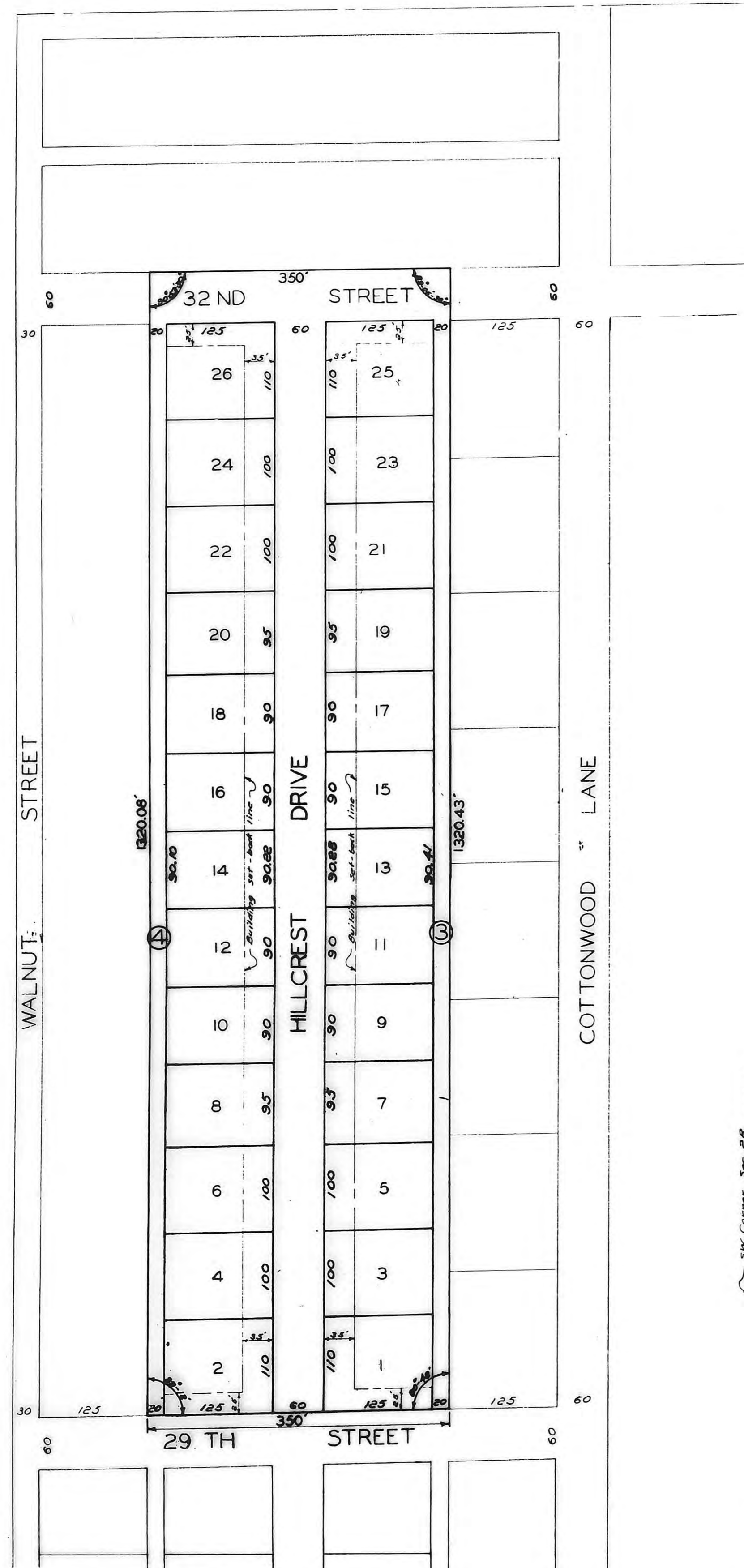


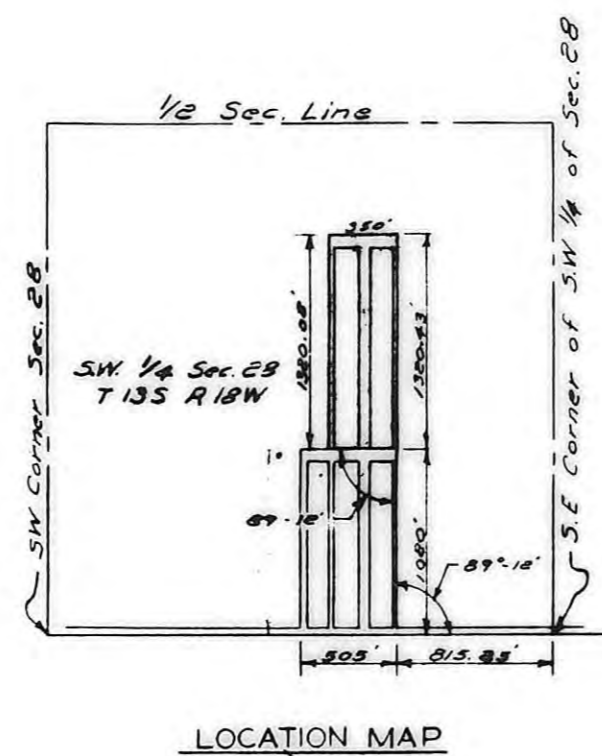
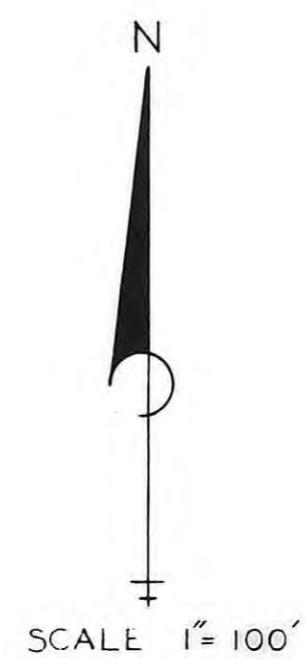
HILLCREST SECOND ADDITION



LEGAL DESCRIPTION

A TRACT OF LAND IN THE SOUTHWEST 1/4 OF SECTION 28, TOWNSHIP 13 S, RANGE 18 W, OF THE 6TH PRINCIPLE MERIDIAN, ELLIS COUNTY, KANSAS AND FURTHER DESCRIBED AS FOLLOWS:

BEGINNING AT A POINT 815.25 FEET WEST AND 1020 FEET NORTH AT AN ANGLE OF 89 DEGREES 12 MINUTES OF THE SOUTHEAST CORNER OF THE SOUTHWEST 1/4 OF SAID SECTION 28; THENCE WEST AT AN ANGLE OF 89 DEGREES 12 MINUTES, 350 FEET; THENCE NORTH AT AN ANGLE OF 89 DEGREES 12 MINUTES, 1,320.08 FEET; THENCE EAST AT AN ANGLE OF 90 DEGREES 53 MINUTES 30 SECONDS, 350 FEET; THENCE SOUTH AT AN ANGLE OF 89 DEGREES 6 MINUTES 30 SECONDS, 1,320.43 FEET TO THE POINT OF BEGINNING.



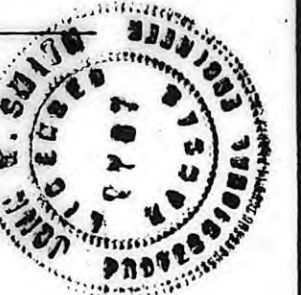
LOCATION MAP

ENGINEER'S CERTIFICATE

I, JOHN W. SMITH, A LICENSED PROFESSIONAL ENGINEER, DO HEREBY CERTIFY THIS PLAT TO BE TRUE AND CORRECT TO THE BEST OF MY KNOWLEDGE.

SIGNED THIS 31 DAY OF March, 1964.

John W. Smith
JOHN W. SMITH, P.E.



I HEREBY CERTIFY THAT THIS PLAT WAS FIRST SUBMITTED TO THE CITY PLANNING COMMISSION AND BY THE CITY PLANNING COMMISSION TO THE GOVERNING BODY OF THE CITY OF HAYS, KANSAS AND BY SUCH GOVERNING BODY DULY APPROVED ON March 31, 1964.

Dorothy Soderbloom
DOROTHY SODERBLOM
CITY CLERK



THIS IS A DIRECT PHOTOGRAPHIC REPRODUCTION OF THE OFFICIAL INSTRUMENT (RECORDED PLAT).
THIS REPRODUCTION WAS MADE BY BUCHER & WILLIS, CONSULTING ENGINEERS, PLANNERS & ARCHITECTS IN NOVEMBER, 1979.

Ordinance 213-315
Resolution 213-321

STATE OF KANSAS
ELLIS COUNTY
This instrument was filed for record

APR 3 1963

4.130 CHUK in recorded in
2 of plat page 90
Fees 3.00
260
\$5.60
Register of Deeds

Ordinance Book 213-316

DRAWN BY FLM.		JOHN W. SMITH CONSULTING ENGINEER AND ASSOCIATES	
CHECKED BY JWS		HAYS KANSAS	
DATE March 29	JOB NO. 68-214		
HILLCREST SECOND ADDITION		SHEET 1 OF 1	
HAYS		KANSAS	