

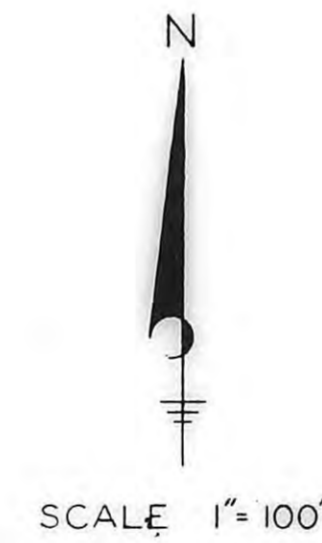
# HILLCREST FOURTH ADDITION

TO THE CITY OF HAYS KANSAS

**LEGAL DESCRIPTION:**

A TRACT OF LAND IN THE SOUTHWEST 1/4 OF SECTION 28, TOWNSHIP 13 SOUTH, RANGE 18 WEST OF THE SIXTH PRINCIPAL MERIDIAN, ELLIS COUNTY, KANSAS, FURTHER DESCRIBED AS FOLLOWS:

BEGINNING AT A POINT 1,165.25 FEET WEST AND 1,020 FEET NORTH, AT AN ANGLE OF 89 DEGREES 12 MINUTES, OF THE SOUTHWEST CORNER OF SAID SECTION; THENCE NORTH 1,320.08 FEET; THENCE WEST WITH AN INTERNAL ANGLE OF 89 DEGREES 8 MINUTES 30 SECONDS, 485 FEET; THENCE SOUTH WITH AN INTERNAL ANGLE OF 90 DEGREES 53 MINUTES 30 SECONDS, 752.9 FEET TO A POINT ON A CURVE; THENCE RIGHT ON A CURVE OF 670' FOOT RADIUS, INTERNAL ANGLE OF 44 DEGREES 58 MINUTES, 525.1 FEET MEASURED IN 25 FOOT CHORDS EXCEPT THE LAST CHORD; THENCE LEFT ON A CURVE OF 500 FOOT RADIUS, INTERNAL ANGLE OF 13 DEGREES 36 MINUTES, 118.3 FEET MEASURED IN 25 FOOT CHORDS EXCEPT THE LAST CHORD; THENCE EAST, PARALLEL TO THE SOUTH LINE OF SAID SECTION TO THE POINT OF BEGINNING.

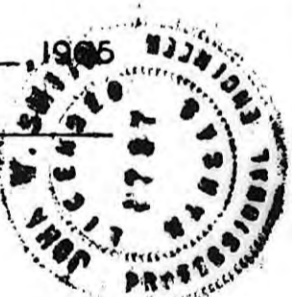


**ENGINEER'S CERTIFICATE**

I, JOHN W. SMITH, A LICENSED PROFESSIONAL ENGINEER, DO HEREBY CERTIFY THIS PLAT TO BE TRUE AND CORRECT TO THE BEST OF MY KNOWLEDGE.

SIGNED THIS 26 DAY OF April, 1965

*John W. Smith*  
JOHN W. SMITH, P.E.

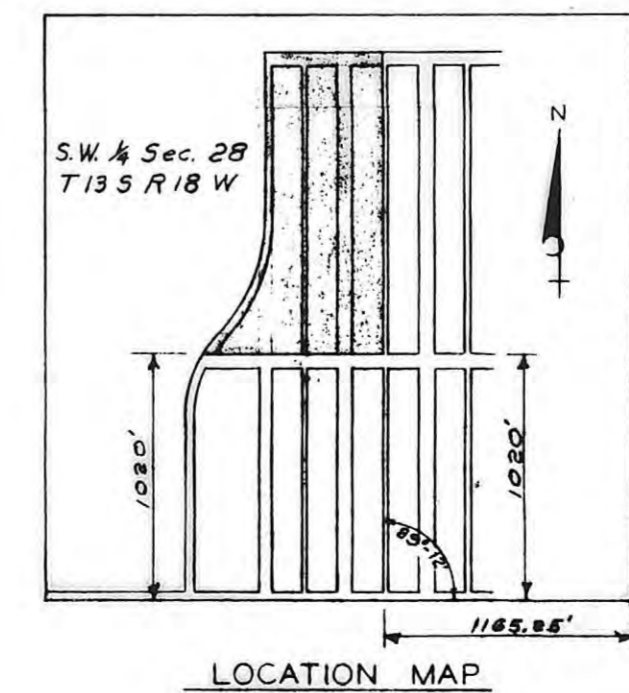


I HEREBY CERTIFY THAT THIS PLAT WAS FIRST SUBMITTED TO THE CITY PLANNING COMMISSION AND BY THE CITY PLANNING COMMISSION TO THE GOVERNING BODY OF THE CITY OF HAYS, KANSAS, AND BY SUCH GOVERNING BODY DULY APPROVED ON April 26, 1964.

*Dorothy Soderblom*  
DOROTHY SODERBLOM  
CITY CLERK



**NOTE**  
ALL ARC MEASUREMENTS ARE RECORDED AS CHORD DISTANCES UNLESS OTHER WISE NOTED.



Ordinance 220-541  
Dedication 220-542  
Resolution 220-548

STATE OF KANSAS  
ELLIS COUNTY  
This instrument was filed for record  
MAY 20 1965  
in recorded in  
Register of Deeds  
Fees \$2.25  
4.00 Transfer  
# 700

DESIGNED BY	JOHN W. SMITH
DRAWN BY	J.W.S.
CHECKED BY	J.W.S.
DATE	April, 1965
JOB NO.	65-206
HAYS KANSAS	
HILLCREST FOURTH ADDITION HAYS KANSAS	
SHEET	1 of 1

THIS IS A DIRECT PHOTOGRAPHIC REPRODUCTION OF THE OFFICIAL INSTRUMENT (RECORDED PLAT).  
THIS REPRODUCTION WAS MADE BY BUCHER & WILLIS CONSULTING ENGINEERS, PLANNERS & ARCHITECTS IN NOVEMBER, 1979.