

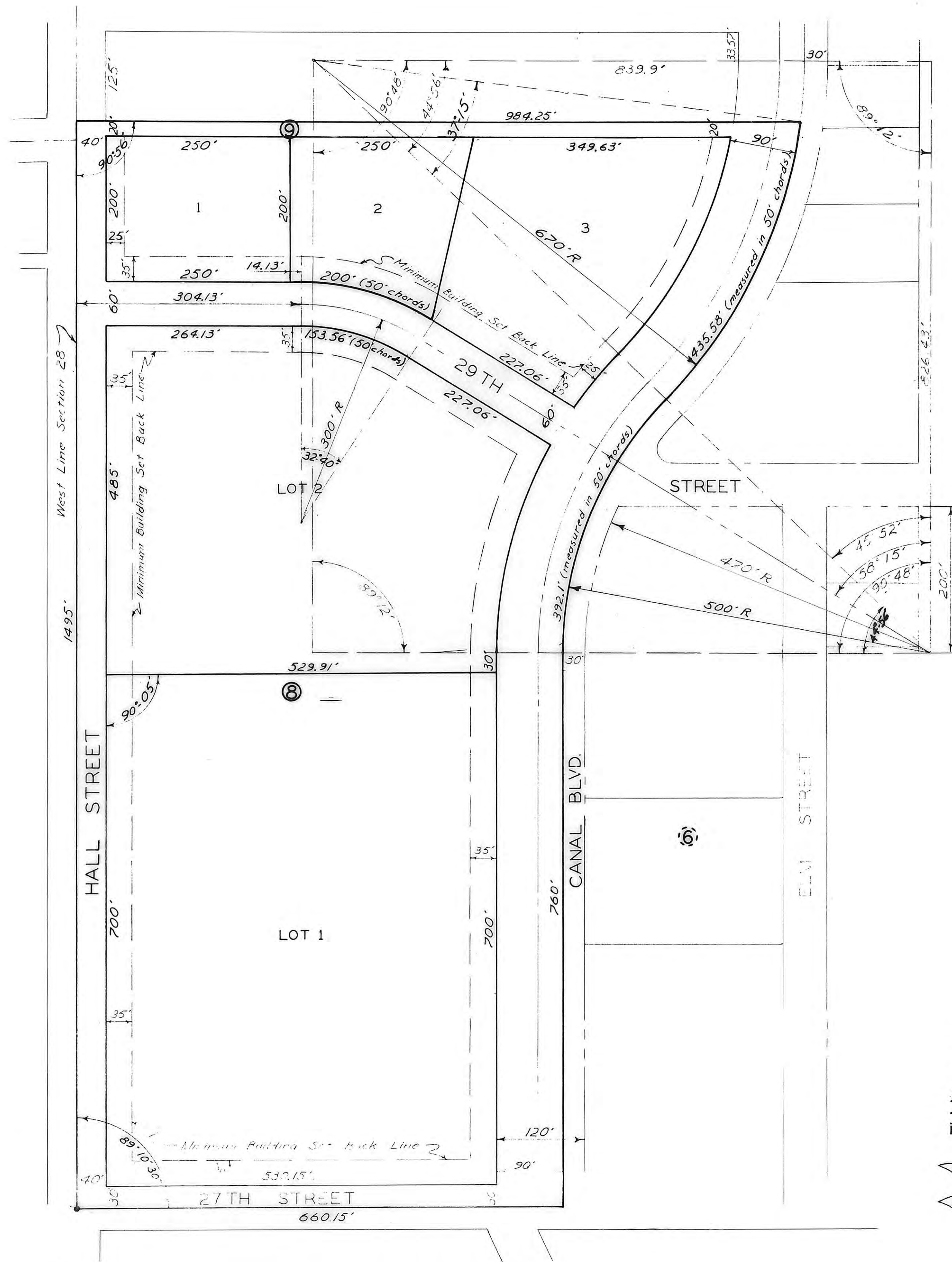
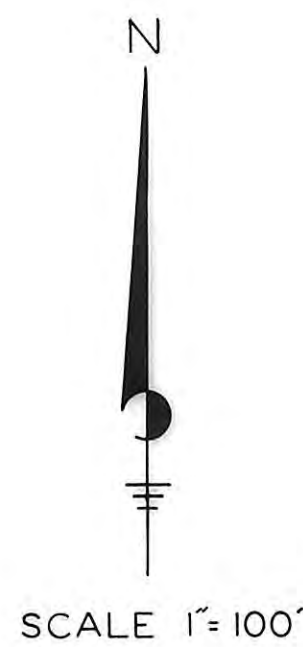
HILLCREST FIFTH ADDITION

TO THE CITY OF HAYS KANSAS

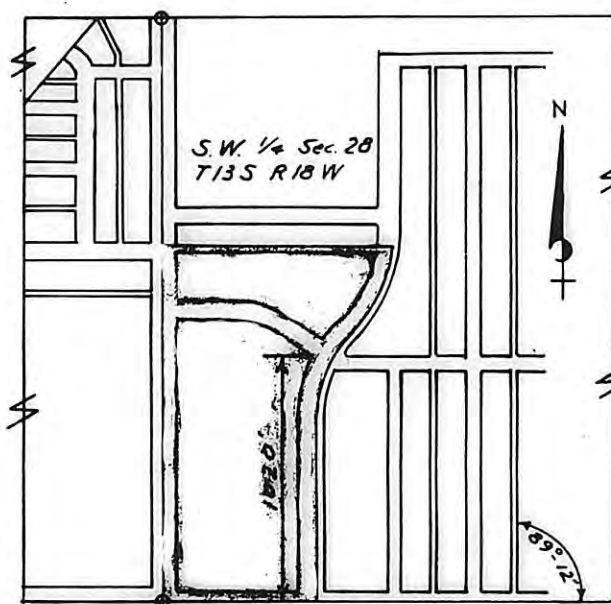
ORDINANCE NO. 227

AN ORDINANCE VACATING AN ALLEY OF TWENTY FEET (20') WIDTH LYING NORTH OF AND ADJACENT TO LOT ONE (1) AND THE WEST TWO HUNDRED THIRTY FEET (230') OF LOT TWO (2), ALL IN BLOCK NINE (9), OF HILLCREST FIFTH ADDITION TO THE CITY OF HAYS, KANSAS.

Book: 264 Pg: 232



NOTE
ALL ARC MEASUREMENTS ARE RECORDED AS CHORD DISTANCES UNLESS OTHERWISE NOTED.



LOCATION MAP

LEGAL DESCRIPTION:

A TRACT OF LAND IN THE SOUTHWEST 1/4 OF SECTION 28, TOWNSHIP 13 SOUTH, RANGE 18 WEST OF THE SIXTH PRINCIPAL MERIDIAN, ELLIS COUNTY, KANSAS AND FURTHER DESCRIBED AS FOLLOWS:
BEGINNING AT THE SOUTHWEST CORNER OF SAID SECTION 28; THENCE NORTH, ALONG THE WEST LINE OF SAID SECTION 28, -1,495 FEET; THENCE EAST, PARALLEL TO THE NORTH LINE OF THE SOUTHWEST 1/4 OF SAID SECTION 28, -984.25 FEET TO A POINT ON A CURVE OF 670 FOOT RADIUS, INTERNAL ANGLE OF 37°-15'-00"; THENCE RIGHT ON SAID CURVE, A DISTANCE OF 435.58 FEET, MEASURED ON 50 FOOT CHORDS, EXCEPT THE LAST CHORD; THENCE LEFT ON A CURVE OF 500 FOOT RADIUS, INTERNAL ANGLE OF 44°-56'; -392.1 FEET IN 50 FOOT CHORDS, EXCEPT THE LAST CHORD; THENCE SOUTH 76° FEET TO THE SOUTH LINE OF SAID SECTION 28; THENCE WEST ALONG THE SOUTH LINE OF SAID SECTION 28, -660.15 FEET TO THE POINT OF BEGINNING.

THIS PLAT APPROVED THIS 22 DAY OF JULY 1966 BY THE CITY OF HAYS PLANNING COMMISSION.

James E. Pruechel
CHAIRMAN

ENGINEER'S CERTIFICATE

I, JOHN W. SMITH, A LICENSED PROFESSIONAL ENGINEER, DO HEREBY CERTIFY THIS PLAT TO BE TRUE AND CORRECT TO THE BEST OF MY KNOWLEDGE.

SIGNED THIS 15 DAY OF July, 1966

John W. Smith
JOHN W. SMITH, P.E.

I HEREBY CERTIFY THAT THIS PLAT WAS FIRST SUBMITTED TO THE CITY PLANNING COMMISSION AND BY THE CITY PLANNING COMMISSION TO THE GOVERNING BODY OF THE CITY OF HAYS, KANSAS, AND BY SUCH GOVERNING BODY DULY APPROVED ON July 15, 1966.

Dorothy Soderbloom
DOROTHY SODERBLOM
CITY CLERK

STATE OF KANSAS }
ELLIS COUNTY }
This instrument was filed for record

AUG 4 1966
2130 of 2130 P in recorded in 106
of 2130 page 106
Fees: 2.00 Register of Deeds
83.75
Plat Medication
Book 278 058 Page 686
Resolution
Book 278 058 691

DESIGNED BY	JOHN W. SMITH
DRAWN BY	G.D.K.
CHECKED BY	J.W.S.
DATE	JUNE 66-219
JOB NO.	
HILLSIDE FIFTH ADDITION	
HAYS KANSAS	

THIS IS A DIRECT PHOTOGRAPHIC REPRODUCTION OF THE OFFICIAL INSTRUMENT (RECORDED PLAT).
THIS REPRODUCTION WAS MADE BY BUCHER & WILLIS, CONSULTING ENGINEERS, PLANNERS & ARCHITECTS IN NOVEMBER, 1979.

SHEET 1 OF 1