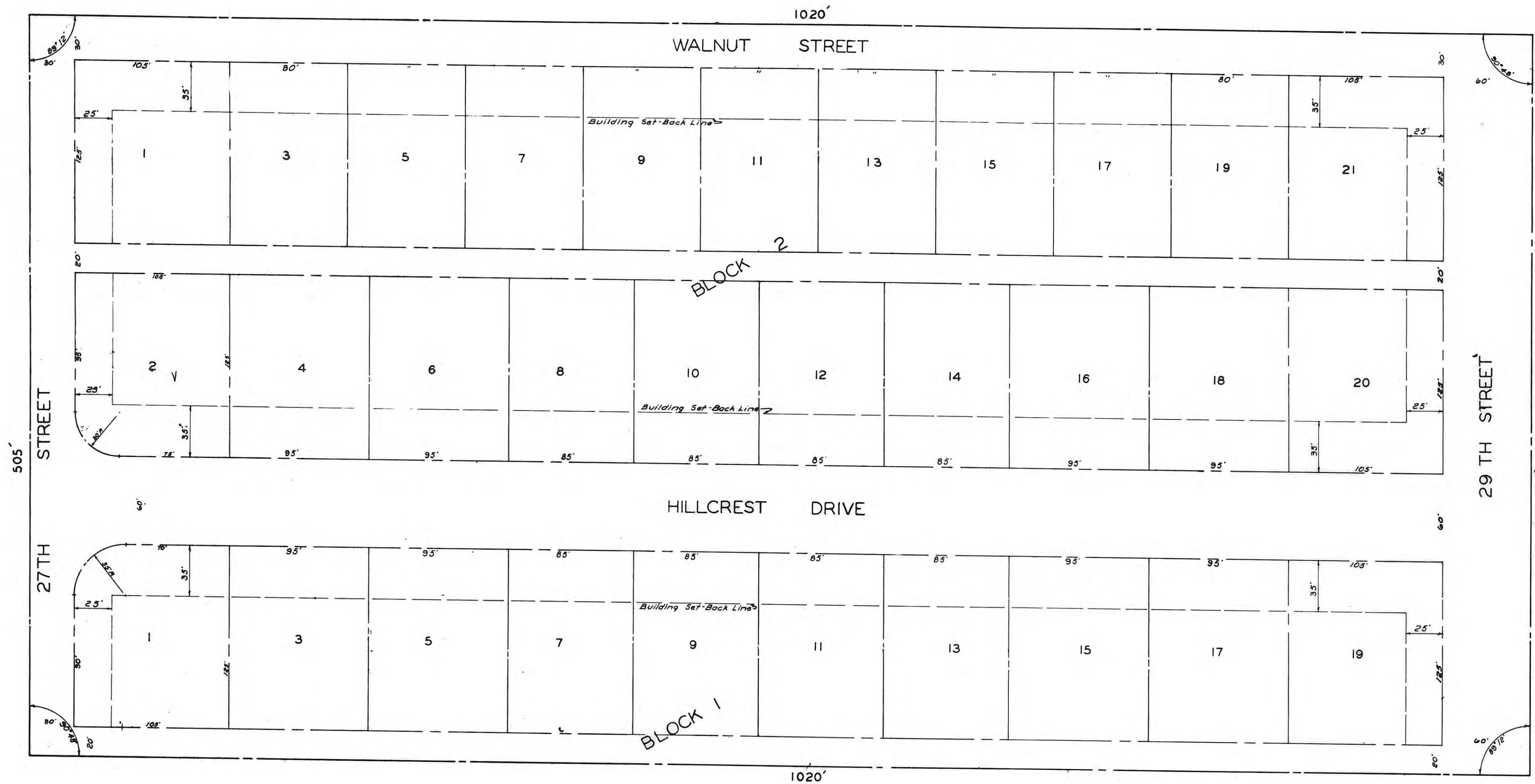


HILLCREST ADDITION



SCALE - 1" = 50'



ENGINEER'S CERTIFICATE

I, THE UNDERSIGNED, JOHN W. SMITH, A LICENSED PROFESSIONAL ENGINEER, DO HEREBY CERTIFY THIS PLAN TO BE TRUE AND CORRECT TO THE BEST OF MY KNOWLEDGE.

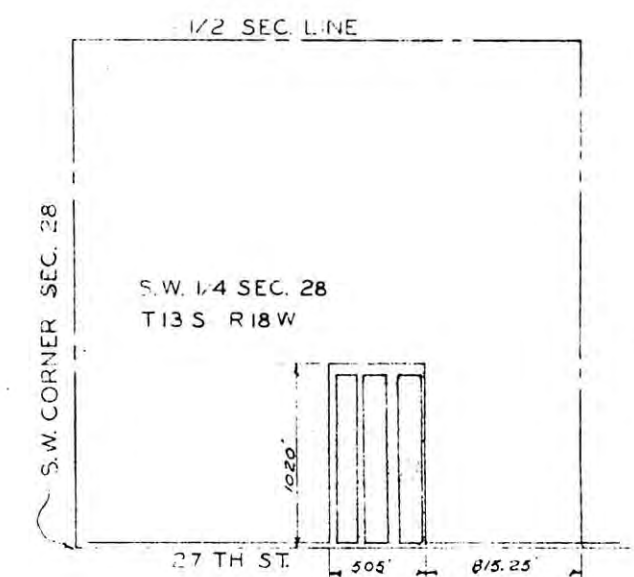
SIGNED THIS 20 DAY OF September, 1962

John W. Smith
JOHN W. SMITH, P.E.



I HEREBY CERTIFY THAT THIS PLAN WAS FIRST SUBMITTED TO THE CITY PLANNING COMMISSION AND BY THE CITY PLANNING COMMISSION TO THE GOVERNING BODY OF THE CITY OF HAYS, KANSAS AND BY SUCH GOVERNING BODY APPROVED ON September 20, 1962

Dorothy Soderblom
DOROTHY SODERBLOM
CITY CLERK



LOCATION MAP

LEGAL DESCRIPTION

A TRACT OF LAND IN THE S.W. 1/4 OF SECTION 28, T13 S, R18 W OF THE 6TH P.M., ELLIS COUNTY, KANSAS AND FURTHER DESCRIBED AS FOLLOWS:
BEGINNING AT A POINT 815.25 FEET WEST OF THE S.E. CORNER OF THE S.W. 1/4 OF SECTION 28, THENCE WEST 505 FEET; THENCE NORTH AT ANGLE OF 89 DEGREES 12 MINUTES, A DISTANCE OF 1020 FEET; THENCE EAST PARALLEL TO THE SOUTH LINE OF SECTION 28, A DISTANCE OF 505 FEET; THENCE SOUTH AT AN ANGLE OF 89 DEGREES 12 MINUTES, A DISTANCE OF 1020 FEET TO THE POINT OF BEGINNING.

THIS IS A DIRECT PHOTOGRAPHIC REPRODUCTION OF THE OFFICIAL INSTRUMENT (RECORDED PLAT).

THIS REPRODUCTION WAS MADE BY BUCHER & WILLIS CONSULTING ENGINEERS, PLANNERS & ARCHITECTS IN JUNE 1979

STATE OF KANSAS }
ELLIS COUNTY }
This instrument was filed for record

SEP 26 1962

1/100 - 0 copy - M recorded in
2-01-1962 page 80
Fees \$3.00 - Register of Deeds
Frank 210
610

DRAWN BY D. J. B.		JOHN W. SMITH CONSULTING ENGINEER AND ASSOCIATES	
CHECKED BY J. W. S.		HAYS KANSAS	
DATE AUG 20, 62	JOB NO. 62-224		
HILLCREST ADDITION		SHEET 1 OF 1	
HAYS		KANSAS	