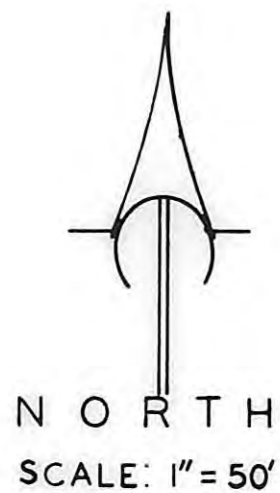


THIS IS A DIRECT PHOTOGRAPHIC REPRODUCTION OF THE OFFICIAL INSTRUMENT (RECORDED PLAT).

THIS REPRODUCTION WAS MADE BY BUCHER & WILLIS, CONSULTING ENGINEERS, PLANNERS & ARCHITECTS IN JUNE 1979



APPROVED BY HAYS CITY PLANNING COMMISSION MARCH 19, 1956

P. F. Felten
P. F. FELTEN, CHAIRMAN

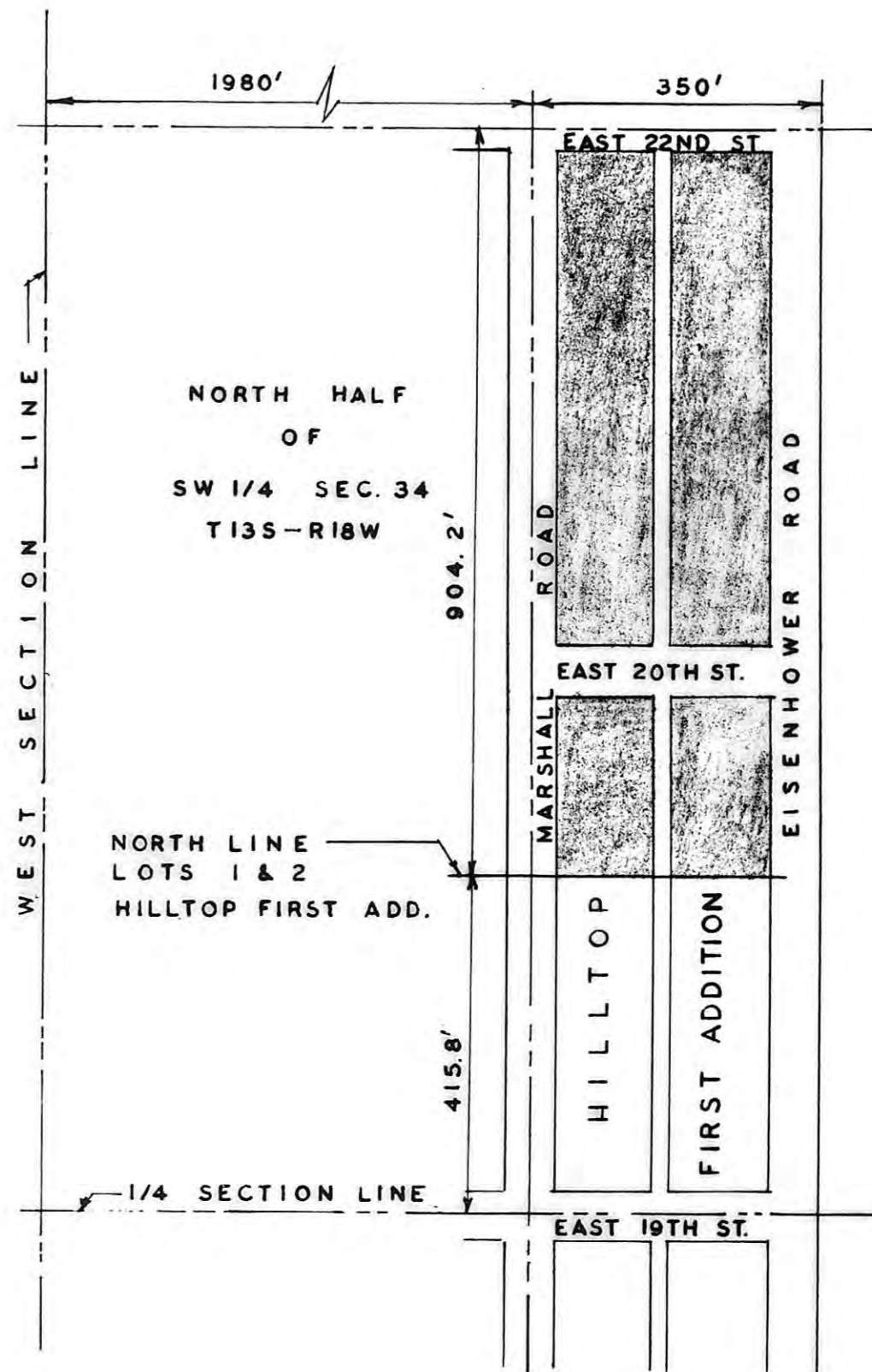
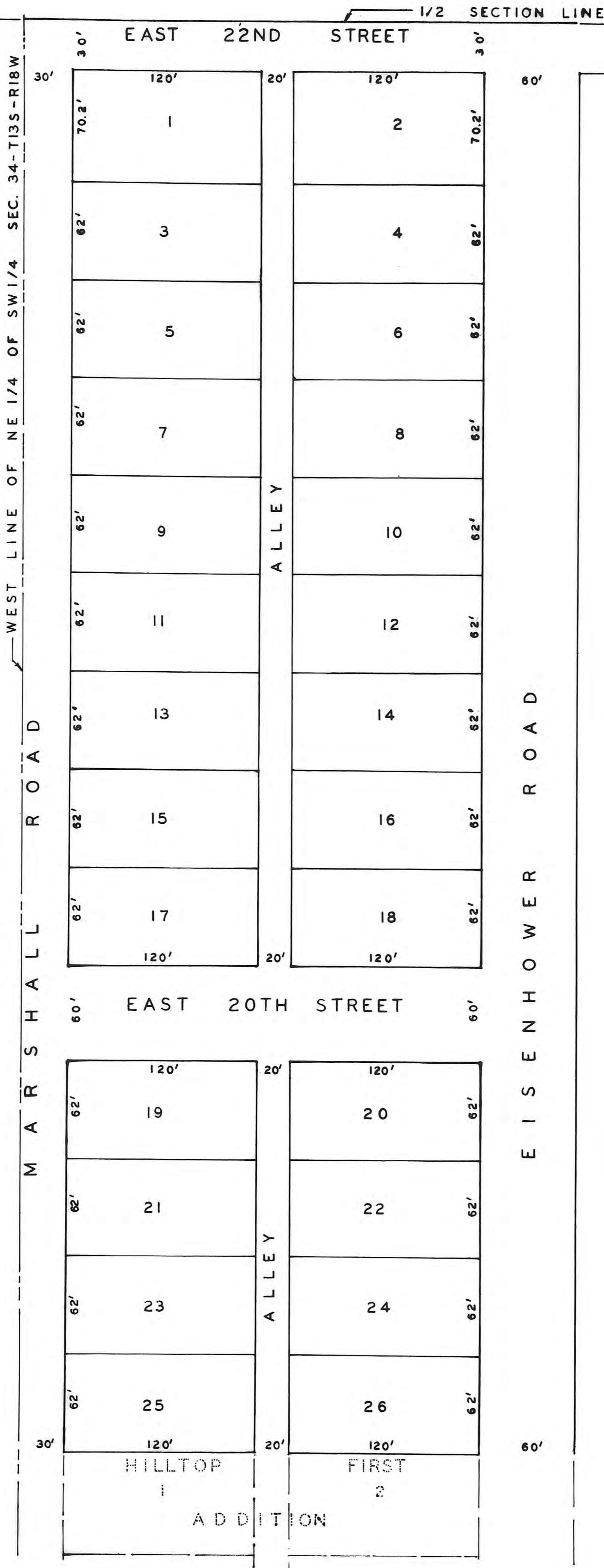
I hereby certify that this plat was approved by the Governing Body of the City of Hays this 26th day of March, 1956.

Paul S. Hill
City Clerk

HAROLD A. ROTHGEB
ARCHITECTURAL & ENGINEERING SERVICE
HAYS KANSAS

I certify this survey to be true and correct.

Harold A. Rothgeb
HAROLD A. ROTHGEB
MARCH 15, 1956



• LOCATION MAP •
SCALE: 1" = 200'

HILLTOP SECOND ADDITION TO THE CITY OF HAYS, KANSAS

STATE OF KANSAS
ELLIS COUNTY
This instrument was filed for record

MAR 28 1956

1:00 o'clock P.M. recorded in
Book of Deeds page 44
Fees \$5.00
Samuel W. Co
5-60
Register of Deeds

For Dedication See
Book 150 of Deeds page 597