

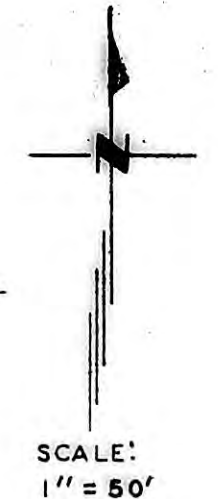
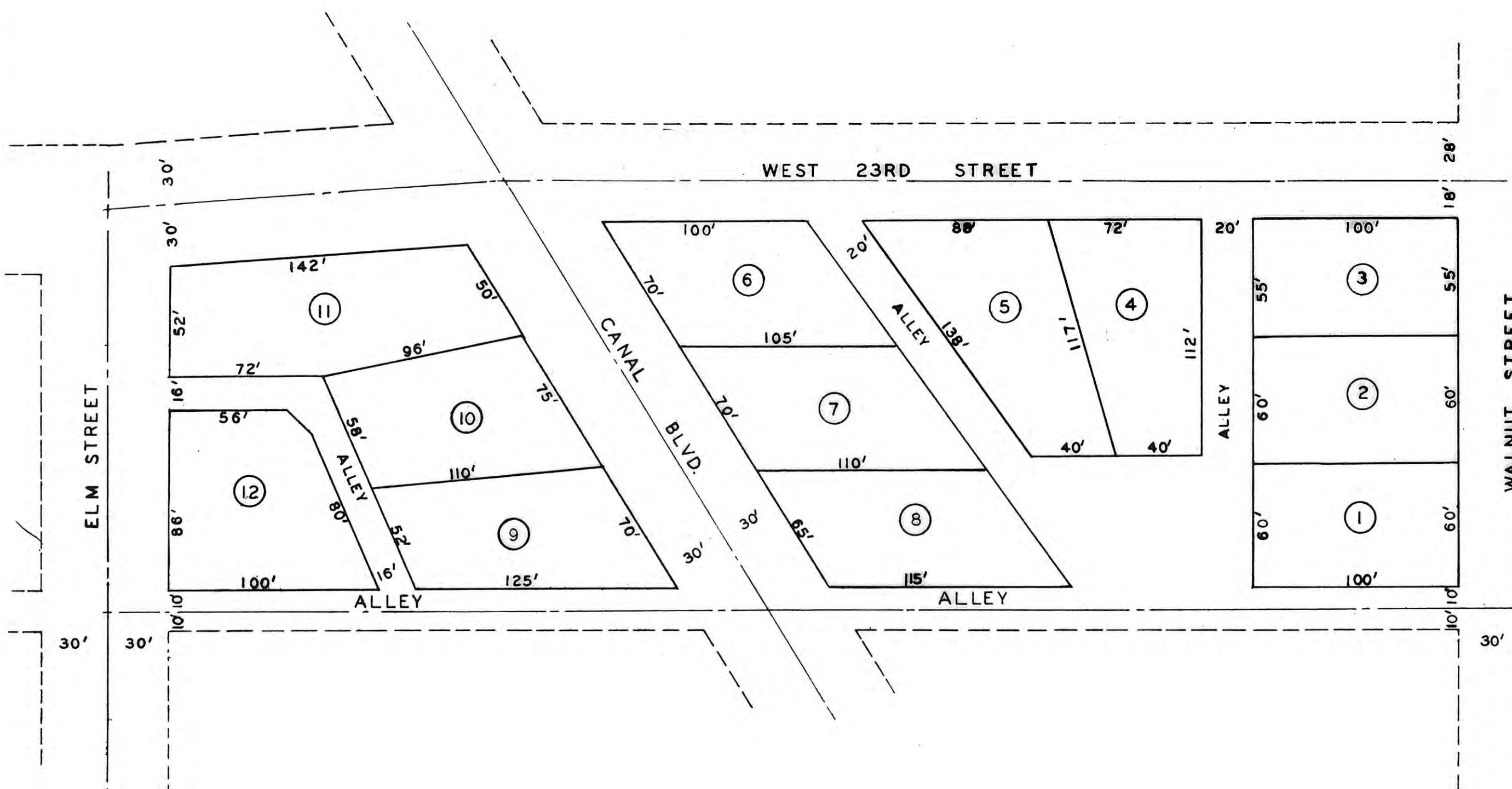
For Deed See 129 042 page 208

HINK'S ADDITION

BEING A SUB-DIVISION OF ALL OF LOT OR BLOCK 12 LEBOLD ALLEN & COMPANY'S ADDITION TO HAYS CITY, NOW THE CITY OF HAYS, KANSAS.

Approved by the City of Hays

City of Hays



I certify this survey to be true and correct.

Harold A. Rothgeb
Harold A. Rothgeb
April 5, 1954.

HAROLD A. ROTHGEB
ARCHITECTURAL & ENGINEERING
SERVICE
HAYS KANSAS

STATE OF KANSAS }
ELLIS COUNTY }
This instrument was filed for record

APR - 7 1954

10.00 o'clock 4 M recorded in
2 of 33 Page 33
Fees 3.00 Register of Deeds
1.20.25

THIS IS A DIRECT PHOTOGRAPHIC REPRODUCTION OF THE OFFICIAL INSTRUMENT (RECORDED PLAT).
THIS REPRODUCTION WAS MADE BY BUCHER & WILLIS, CONSULTING ENGINEERS, PLANNERS & ARCHITECTS IN JUNE 1979