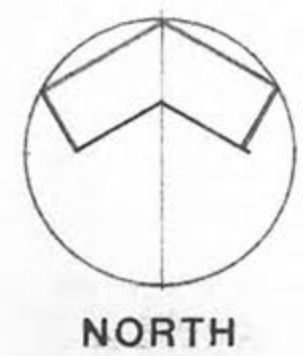
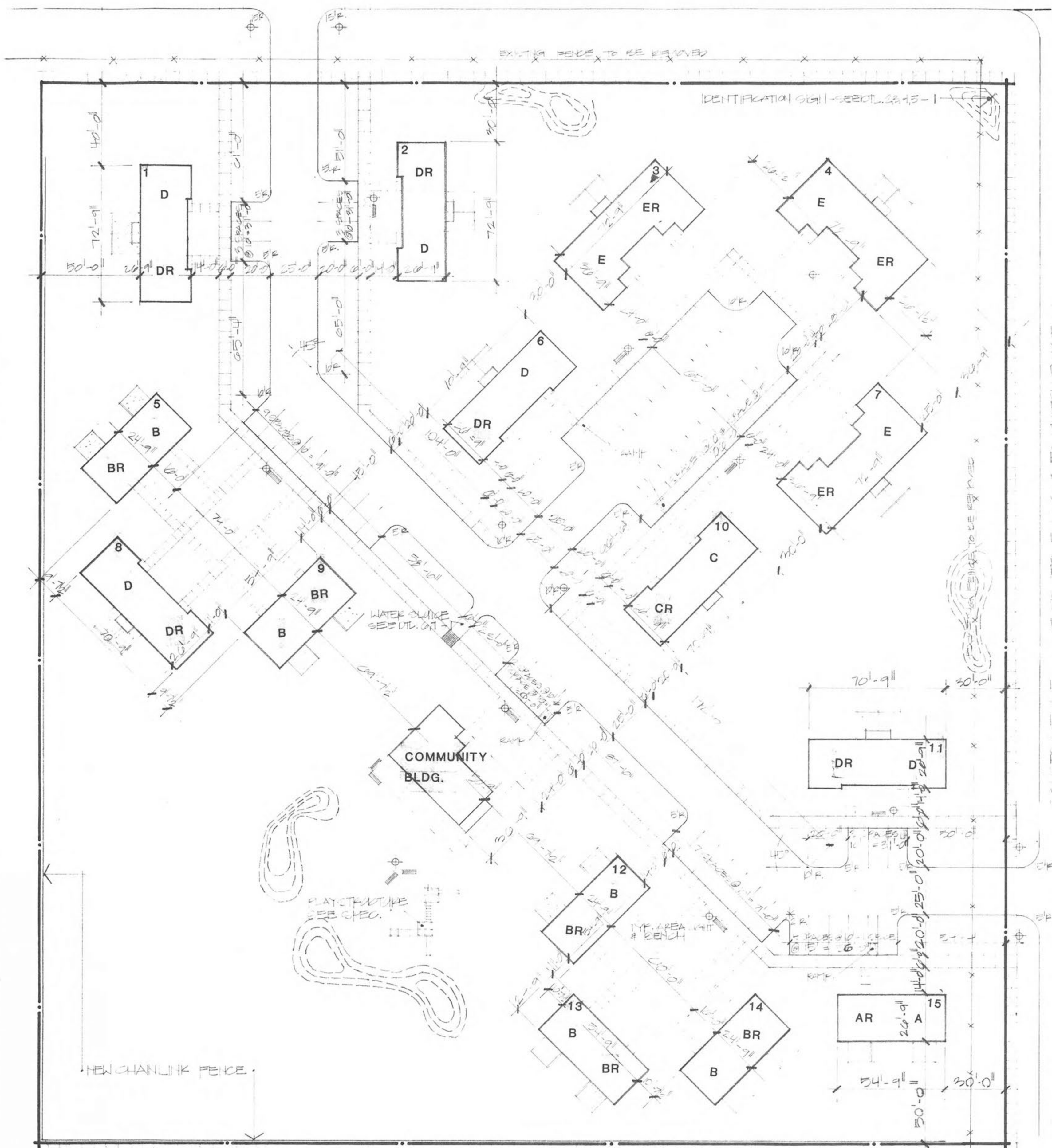


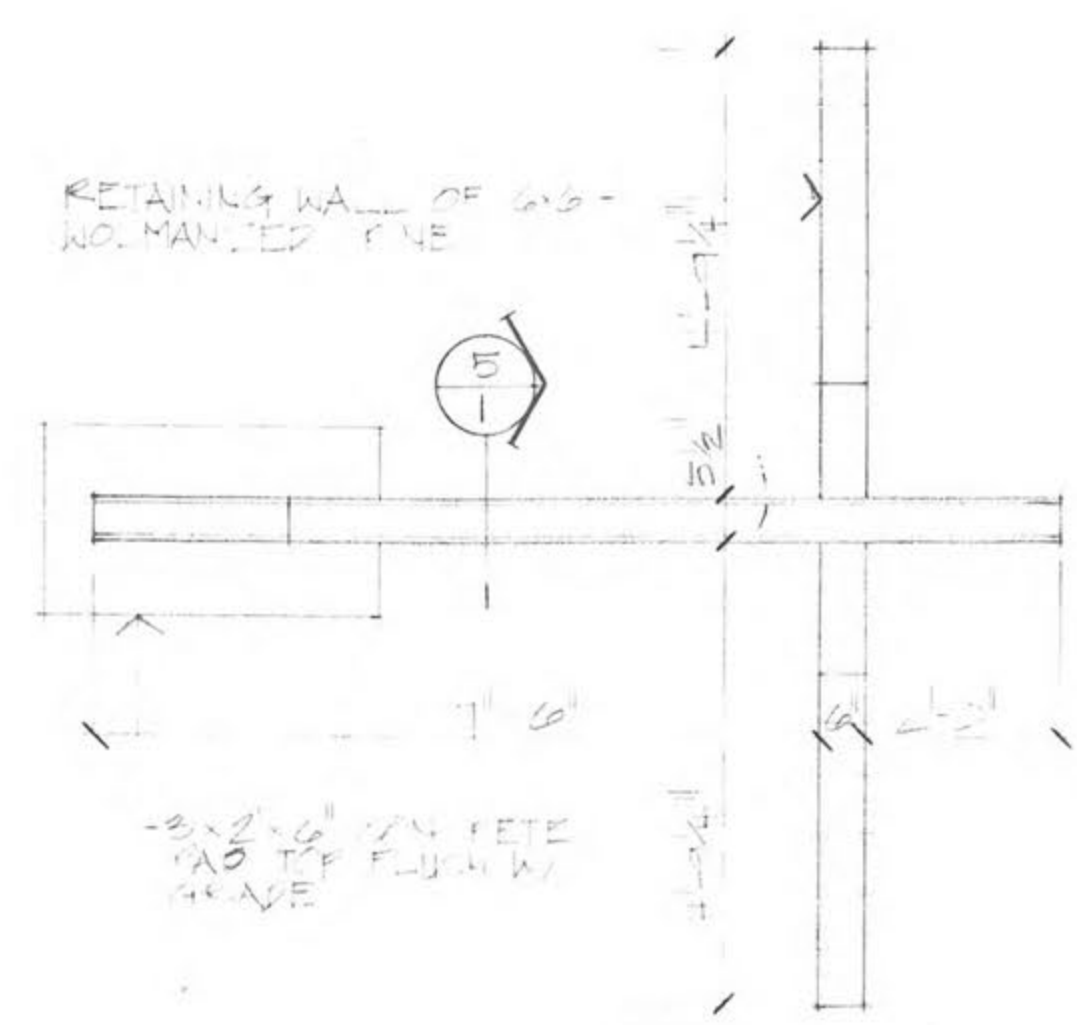
THIRTEENTH STREET



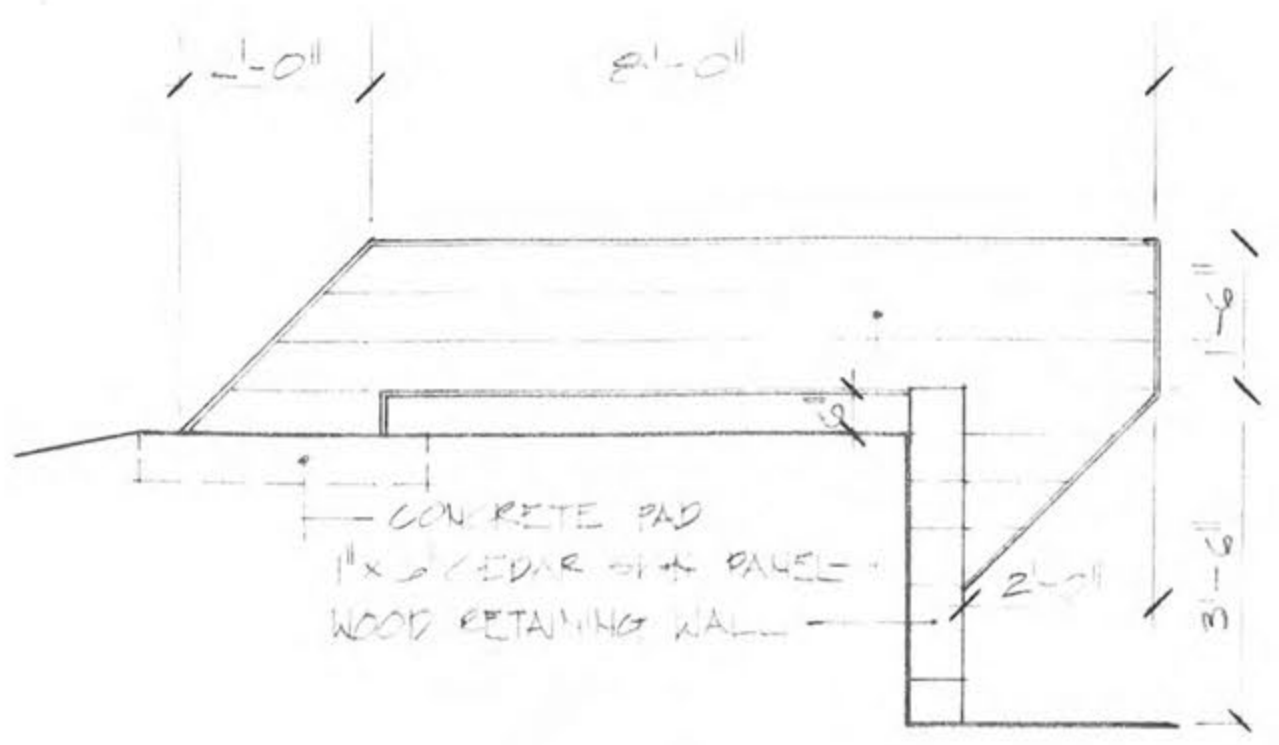
**1 SITE PLAN**  
SCALE: 1" = 30'-0"

- LEGEND**
- AREA LIGHT - SEE UTILITY
  - BENCH - SEE CHEDS
  - HANDICAPPED RAMP
  - EARTH BERM

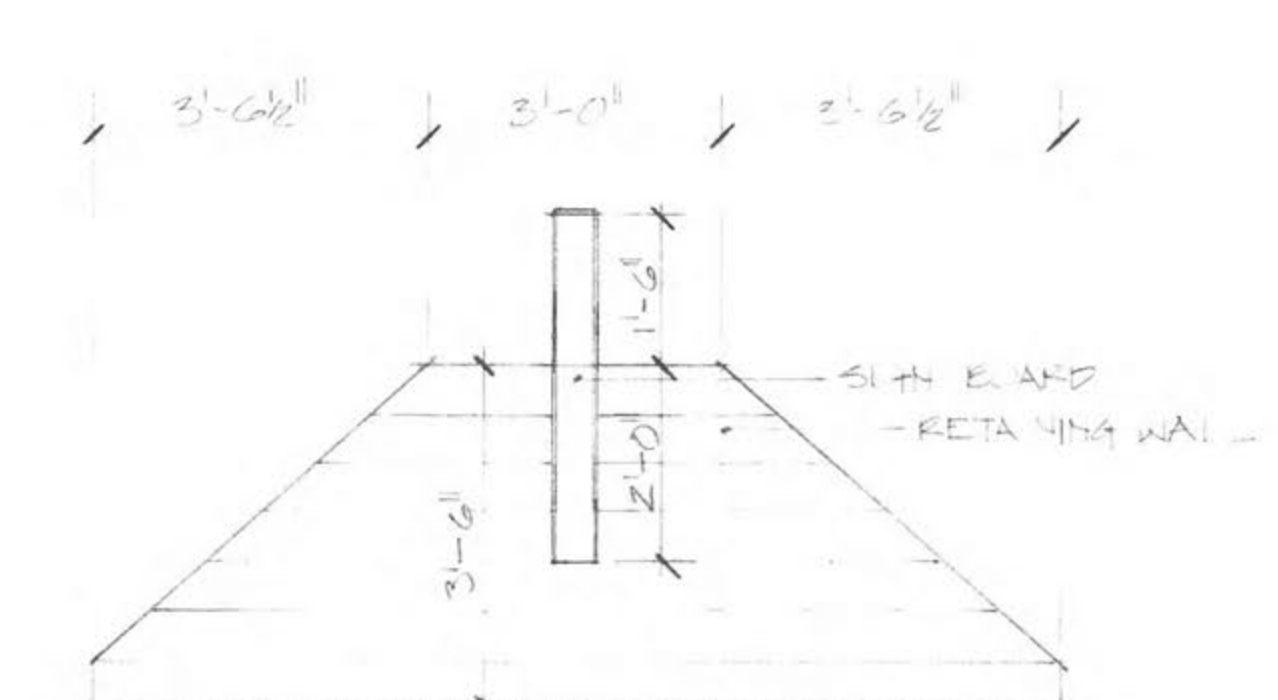
- NOTES**
1. ALL DIMENSIONS ARE AS NOTED
  2. ALL STREET CURBS & RUTS TO BE SET TO 1" ABOVE FINISH TO DRIVEWAY SURFACE



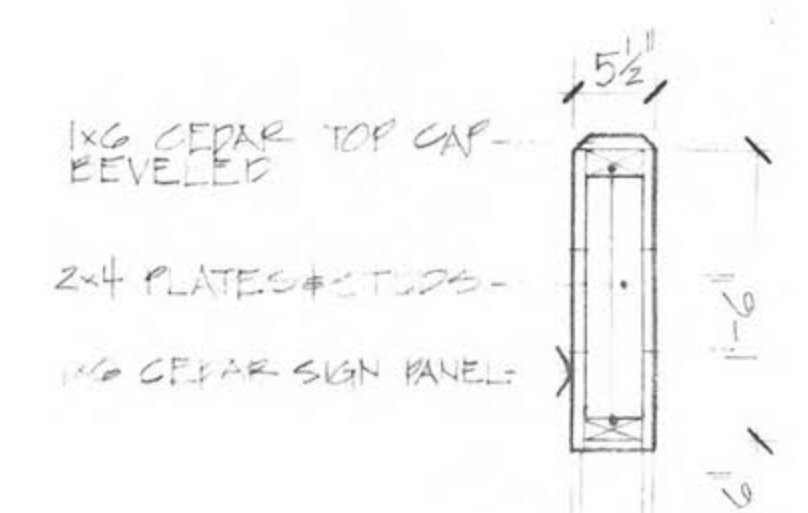
**2 IDENT. SIGN PLAN**  
SCALE 1/2" = 1'-0"



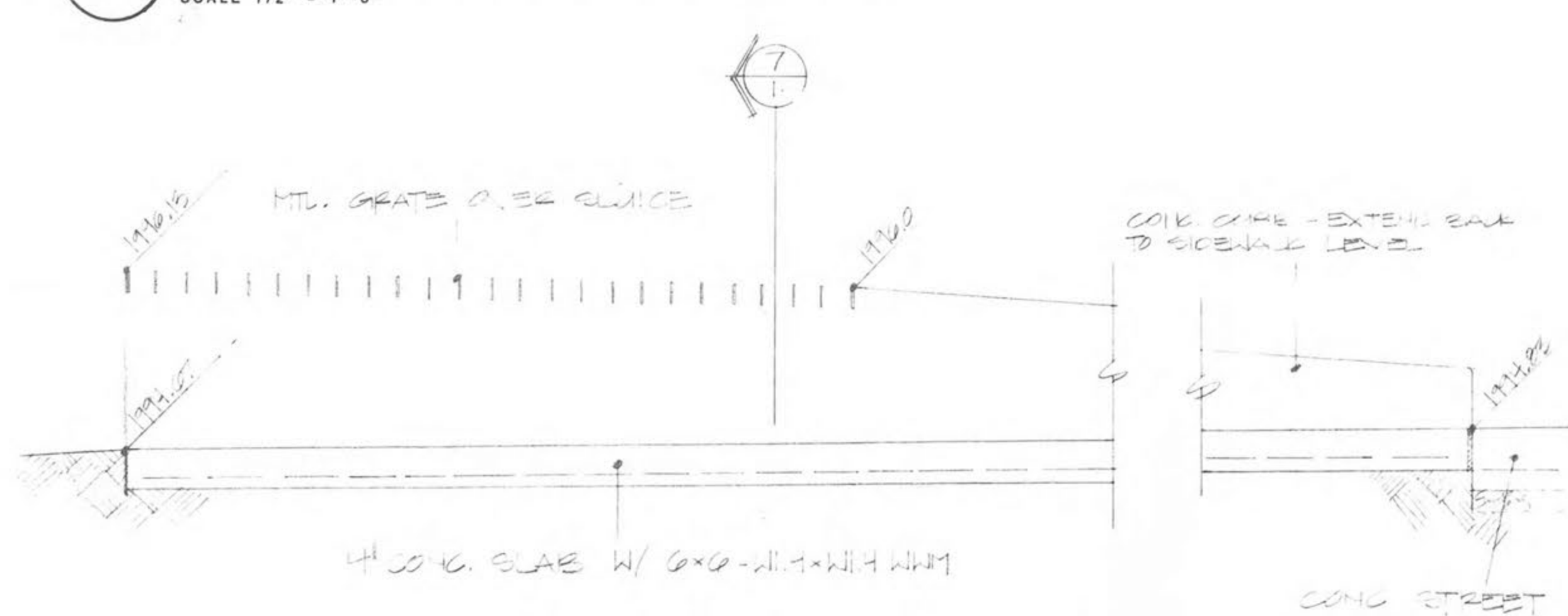
**3 IDENT. SIGN SIDE ELEVATION**  
SCALE 1/2" = 1'-0"



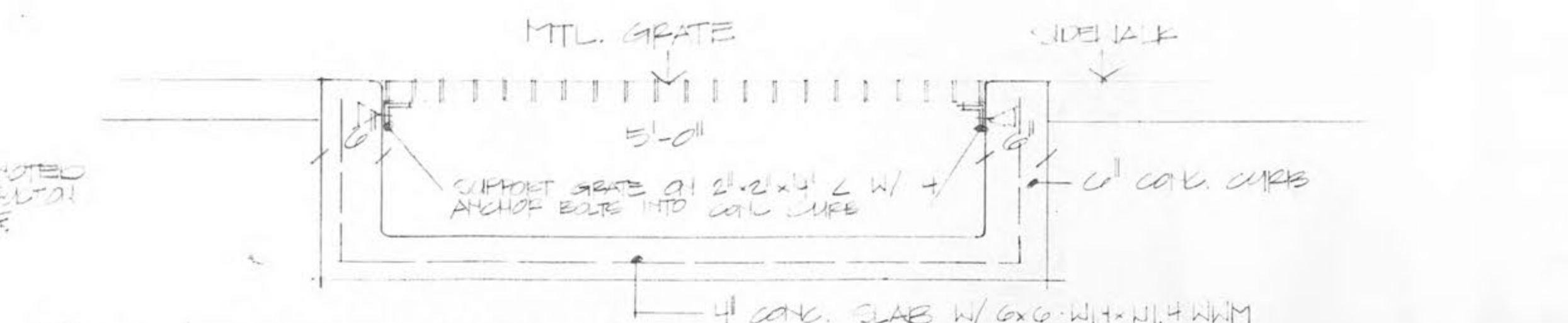
**4 IDENT. SIGN FRONT ELEVATION**  
SCALE 1/2" = 1'-0"



**5 IDENT. SIGN SECTION**  
SCALE 1" = 1'-0"



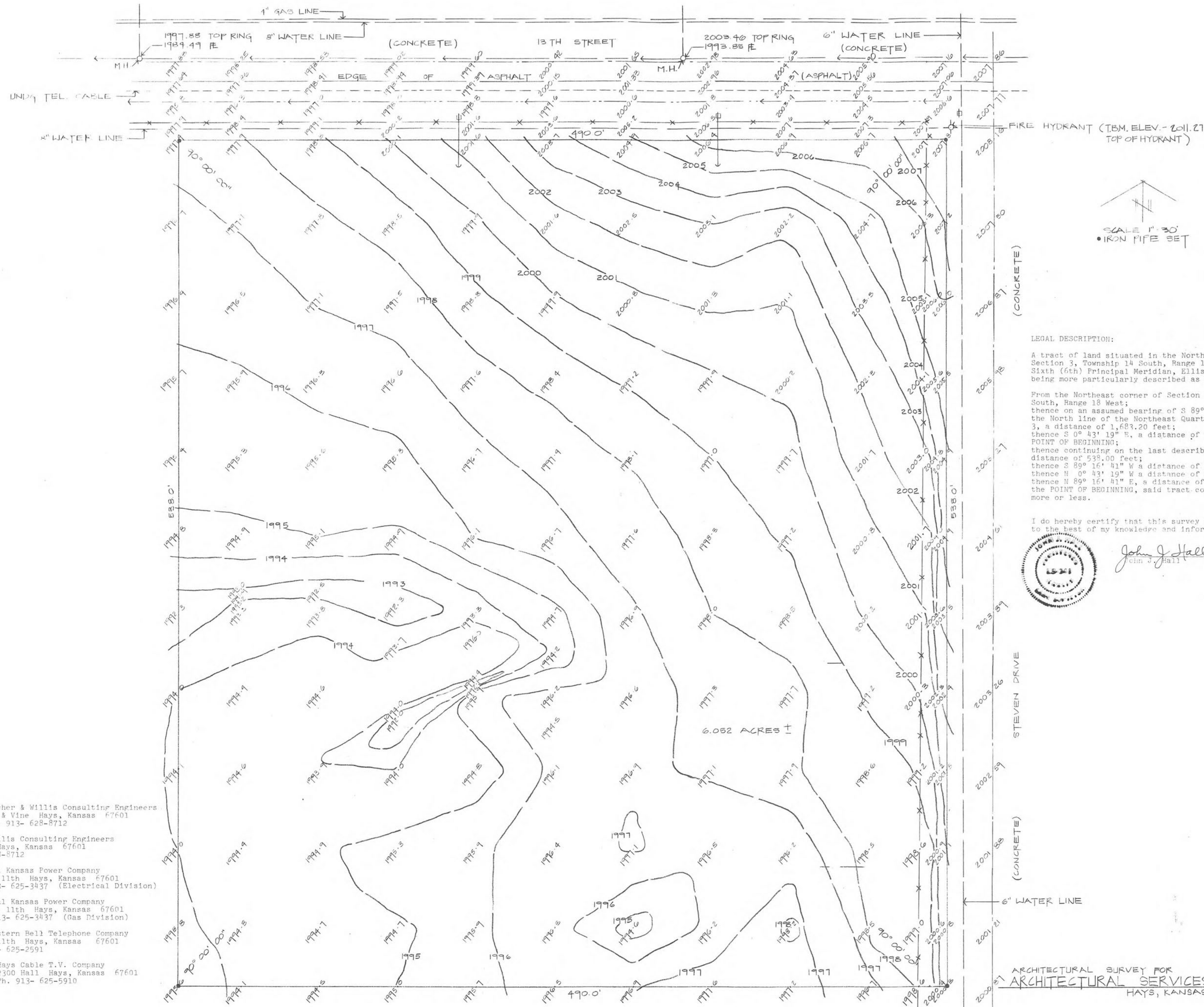
**6 WATER SLUICE DETAIL**  
SCALE 1" = 1'-0"



**7 WATER SLUICE SECTION**  
SCALE 1" = 1'-0"

date: 7.26.17  
 draw by: JDA/USA  
 checked by: KAY  
 revisions:


**A THIRTY UNIT HOUSING PROJECT**  
 FOR THE LOCAL HOUSING AUTHORITY OF HAYS, KANSAS  
 architectural services PLUS · 2141 centennial road · salina, kansas 67401 · 913 - 825 - 2727



LEGAL DESCRIPTION:  
 A tract of land situated in the Northeast Quarter of Section 3, Township 14 South, Range 18 West of the Sixth (6th) Principal Meridian, Ellis County, Kansas, being more particularly described as follows:  
 From the Northeast corner of Section 3, Township 14 South, Range 18 West;  
 thence on an assumed bearing of S 89° 16' 41" W along the North line of the Northeast Quarter of said Section 3, a distance of 1,683.20 feet;  
 thence S 0° 43' 19" E, a distance of 50 feet, to the POINT OF BEGINNING;  
 thence continuing on the last described course, a distance of 538.00 feet;  
 thence S 89° 16' 41" W a distance of 490.00 feet;  
 thence N 0° 43' 19" W a distance of 538.00 feet;  
 thence N 89° 16' 41" E, a distance of 490.00 feet to the POINT OF BEGINNING, said tract contains 6.052 acres more or less.

I do hereby certify that this survey is true and correct to the best of my knowledge and information furnished.  
 John J. Hall  
 LS #381



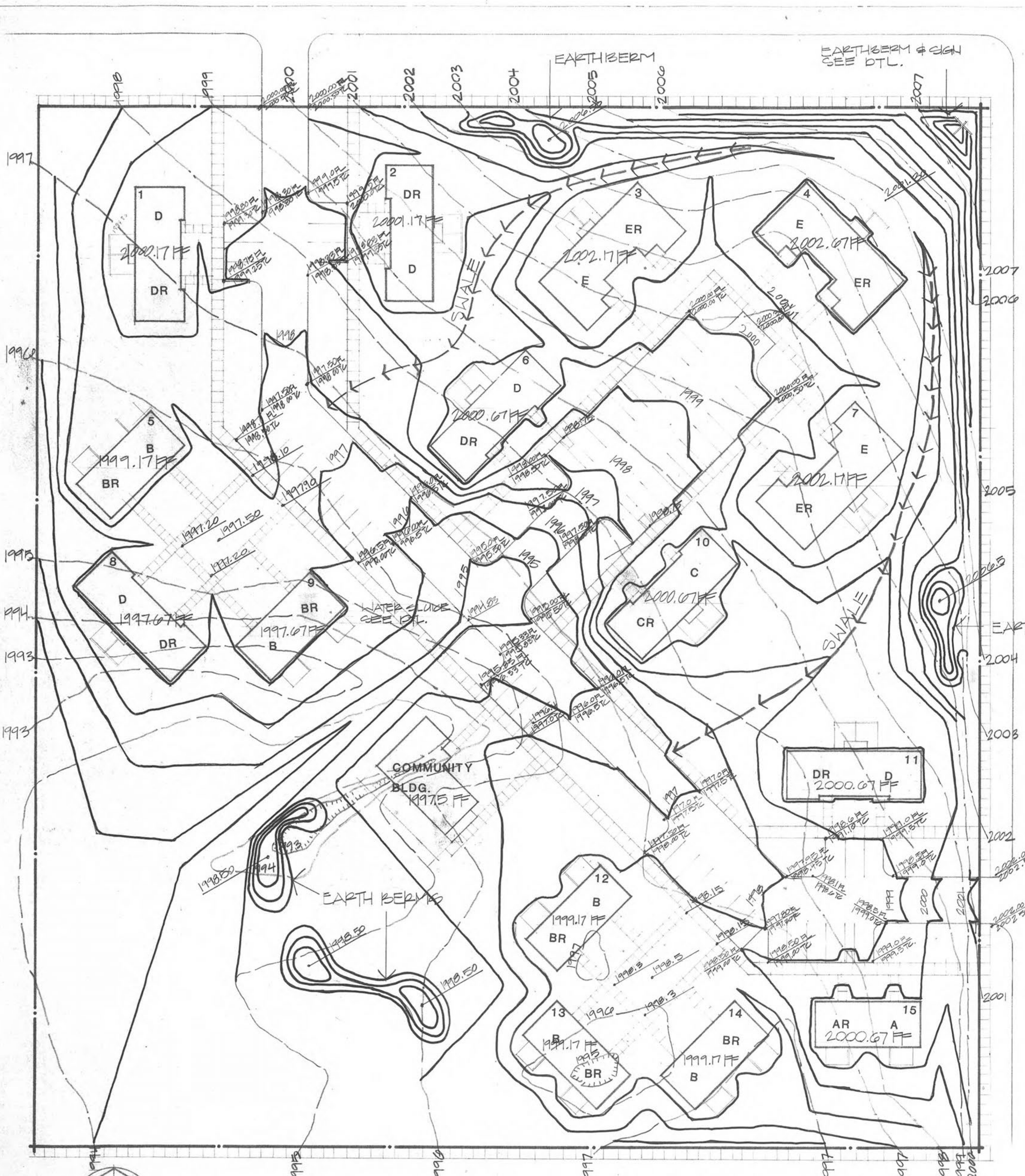
- UTILITIES
- Sanitary Sewer- Bucher & Willis Consulting Engineers  
25 & Vine Hays, Kansas 67601  
Ph. 913- 628-8712
  - Water- Bucher & Willis Consulting Engineers  
25 & Vine Hays, Kansas 67601  
Ph. 913- 628-8712
  - Electrical- Central Kansas Power Company  
111 E. 11th Hays, Kansas 67601  
Ph. 913- 625-3437 (Electrical Division)
  - Gas Service- Central Kansas Power Company  
111 E. 11th Hays, Kansas 67601  
Ph. 913- 625-3437 (Gas Division)
  - Telephone- Southwestern Bell Telephone Company  
126 W. 11th Hays, Kansas 67601  
Ph. 913- 625-2591
  - Cable Television- Hays Cable T.V. Company  
2300 Hall Hays, Kansas 67601  
Ph. 913- 625-5910

ARCHITECTURAL SURVEY FOR  
 ARCHITECTURAL SERVICES PLUS  
 HAYS, KANSAS

PROJECT	77-497
LOCATION	HAYS, KANSAS
DRAWN BY	AWK
DATE	6-14-77
CHECKED BY	J
DATE	6-14-77
SHEET	1
OF	1

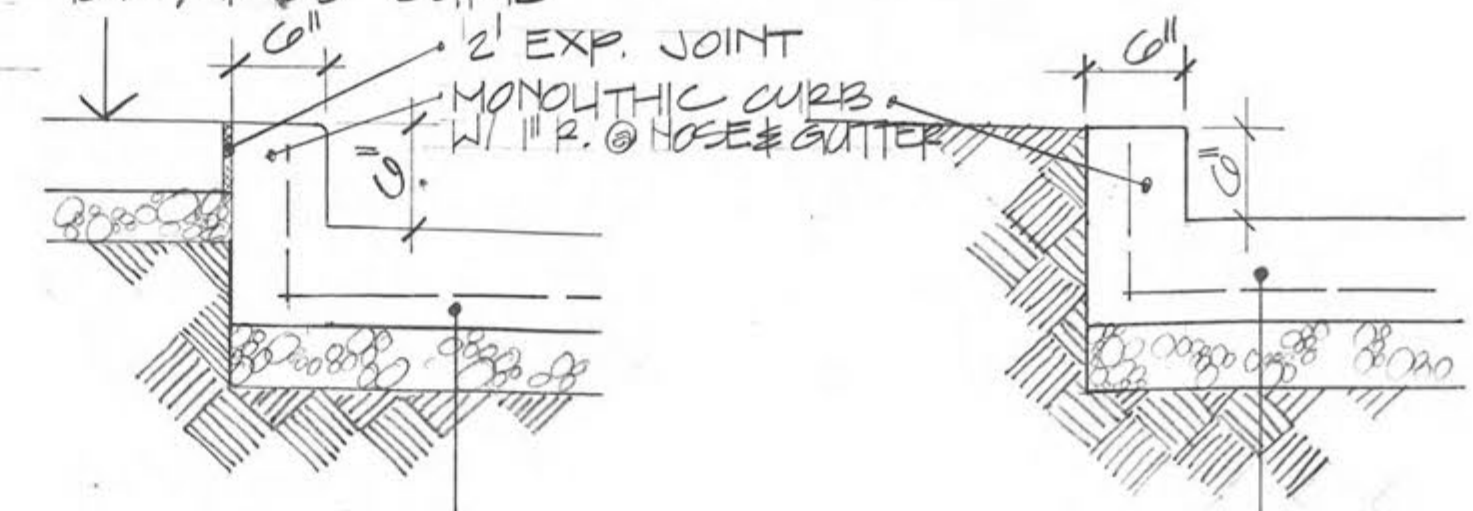
**HALL & ASSOCIATES**  
 LAND SURVEYORS  
 WICHITA KANSAS 67207  
 200 S. ROCK ROAD  
 TELEPHONE 316-685-2304

THIRTEENTH STREET

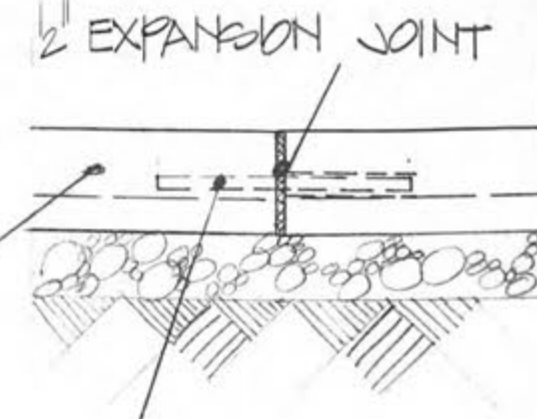


**4 GRADING PLAN**  
SCALE: 1" = 30'-0"

4" CONC. SIDEWALK OVER 2" SAND  
LEVELING BED - SLOPE 1/4" PER 1'-0"  
TOWARDS CURB



**1 CURB AT SIDEWALK DTL.**  
SCALE: 1" = 1'-0"



**2 CURB DTL.**  
SCALE: 1" = 1'-0"

**3 PARKING/DRIVE GUTTER DTL.**  
SCALE: 1" = 1'-0"

**ELEVATIONS:**

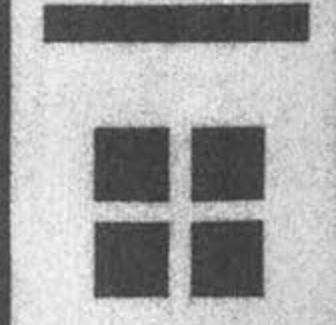
<b>UNIT 1</b>	FINISH FLOOR	2000.17	<b>UNIT 9</b>	FF	1997.67
	FINISH GRADE	1997.50		FG	1997.00
	BOTTOM OF GRADE BEAM	1996.50		BGB	1994.00
<b>UNIT 2</b>	FF	2001.17	<b>UNIT 10</b>	FF	2000.07
	FG	2000.50		FG	2000.00
	BGB	1997.50		BGB	1997.00
<b>UNIT 3</b>	FF	2002.17	<b>UNIT 11</b>	FF	2000.67
	FG	2001.50		FG	2000.00
	BGB	1998.50		BGB	1997.00
<b>UNIT 4</b>	FF	2002.67	<b>UNIT 12</b>	FF	1999.17
	FG	2002.00		FG	1998.50
	BGB	1999.00		BGB	1995.50
<b>UNIT 5</b>	FF	1999.17	<b>UNIT 13</b>	FF	1999.17
	FG	1998.50		FG	1998.50
	BGB	1995.50		BGB	1995.50
<b>UNIT 6</b>	FF	2000.67	<b>UNIT 14</b>	FF	1999.17
	FG	2000.00		FG	1998.50
	BGB	1997.00		BGB	1995.50
<b>UNIT 7</b>	FF	2002.17	<b>UNIT 15</b>	FF	2000.67
	FG	2001.50		FG	2000.00
	BGB	1998.50		BGB	1997.00
<b>UNIT 8</b>	FF	1997.67	<b>COMM. BLDG.</b>	FF	1997.50
	FG	1997.00		FG	1996.83
	BGB	1994.00		BGB	1993.83

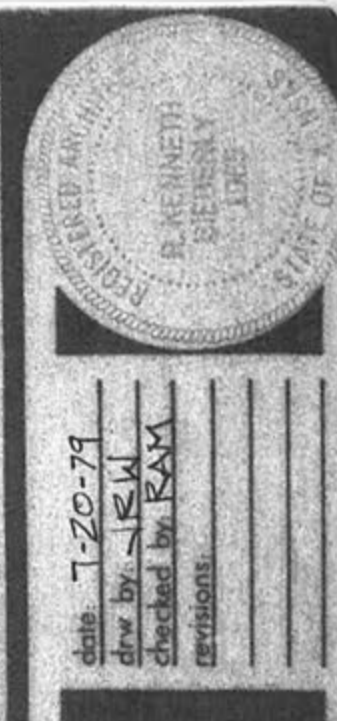
**NOTES:**  
1. MAXIMUM SLOPE TO BE 1:3 EXCEPT AT EARTH BERMS WHERE SLOPE MAY BE 1:1 IF OVERALL BERT HEIGHT IS LESS THAN 4'-0"  
2. SLOPE AWAY FROM ALL BUILDINGS MIN 1'-0" IN 10'-0"



DATE: 7-20-13  
DRAWN BY: [Signature]  
CHECKED BY: [Signature]  
REVISIONS:

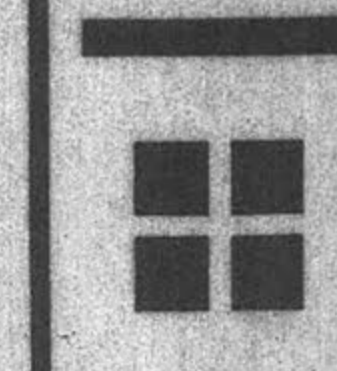
**A THIRTY UNIT HOUSING PROJECT**  
FOR THE LOCAL HOUSING AUTHORITY OF HAYS, KANSAS  
architectural services PLUS · 2141 centennial road · salina, kansas 67401 913 - 825 - 2727



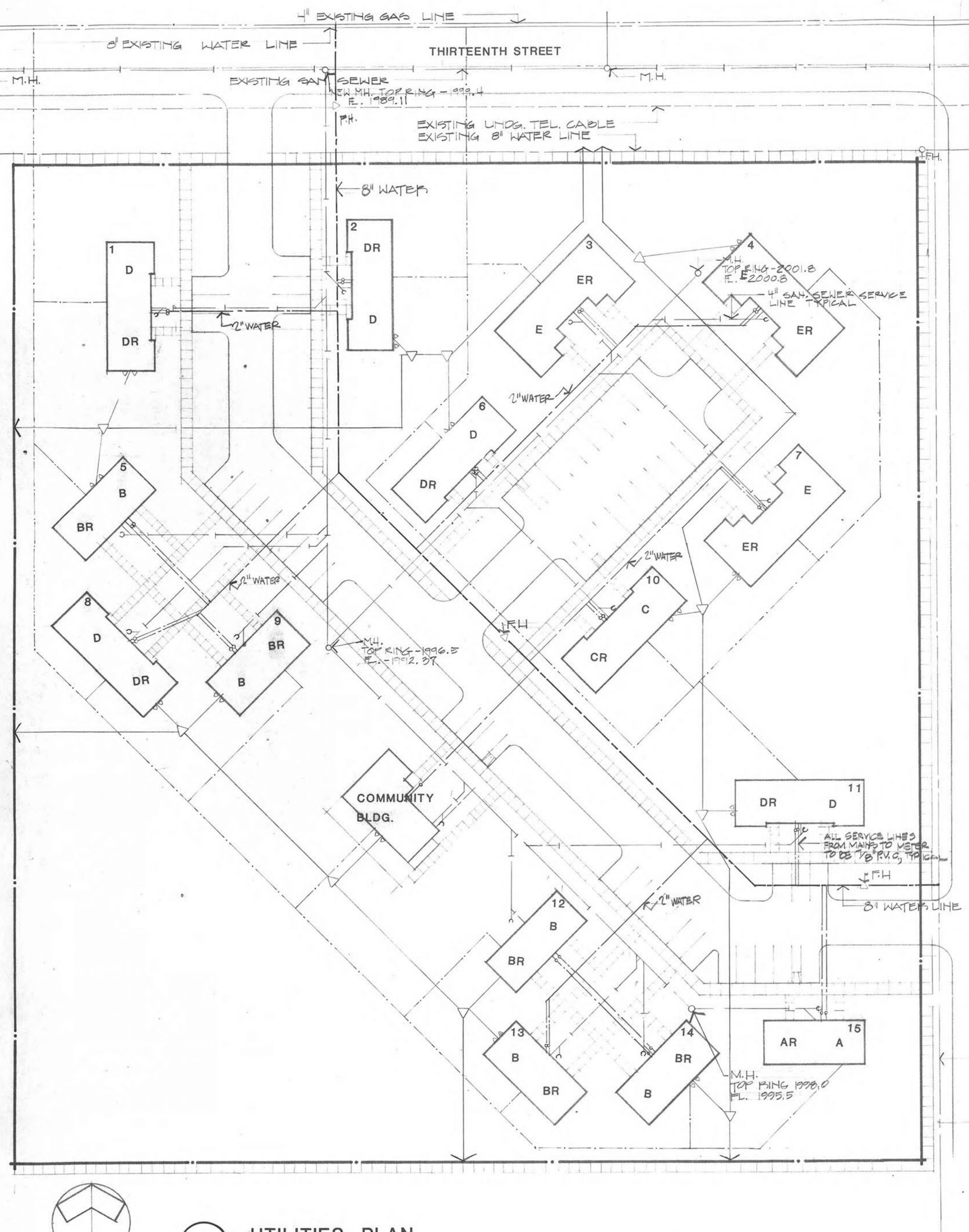


DATE: 7-20-79  
 DRAWN BY: J. NEW  
 CHECKED BY: R. SMITH  
 EXEMPTION:

**A THIRTY UNIT HOUSING PROJECT**  
 FOR THE LOCAL HOUSING AUTHORITY OF HAYS, KANSAS  
 architectural services PLUS · 2141 centennial road · salina, kansas 67401 · 913 - 825 - 2727



sheet  
**4**  
 of 23

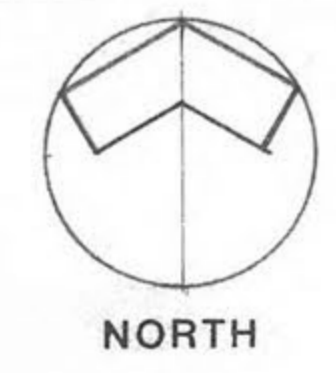


—	ELECT. LINE	—	WATER SERVICE
△	ELECT. SERVICE	○	WATER METER
△ F.H.	FIRE HYDRANT	—	GAS LINE
♀	YARD HYDRANT	□	GAS METER
—	SEWER CLEANOUT	—	SAN. SEWER LINE
△	TRANSFORMER	—	UNDG. TEL. CABLE

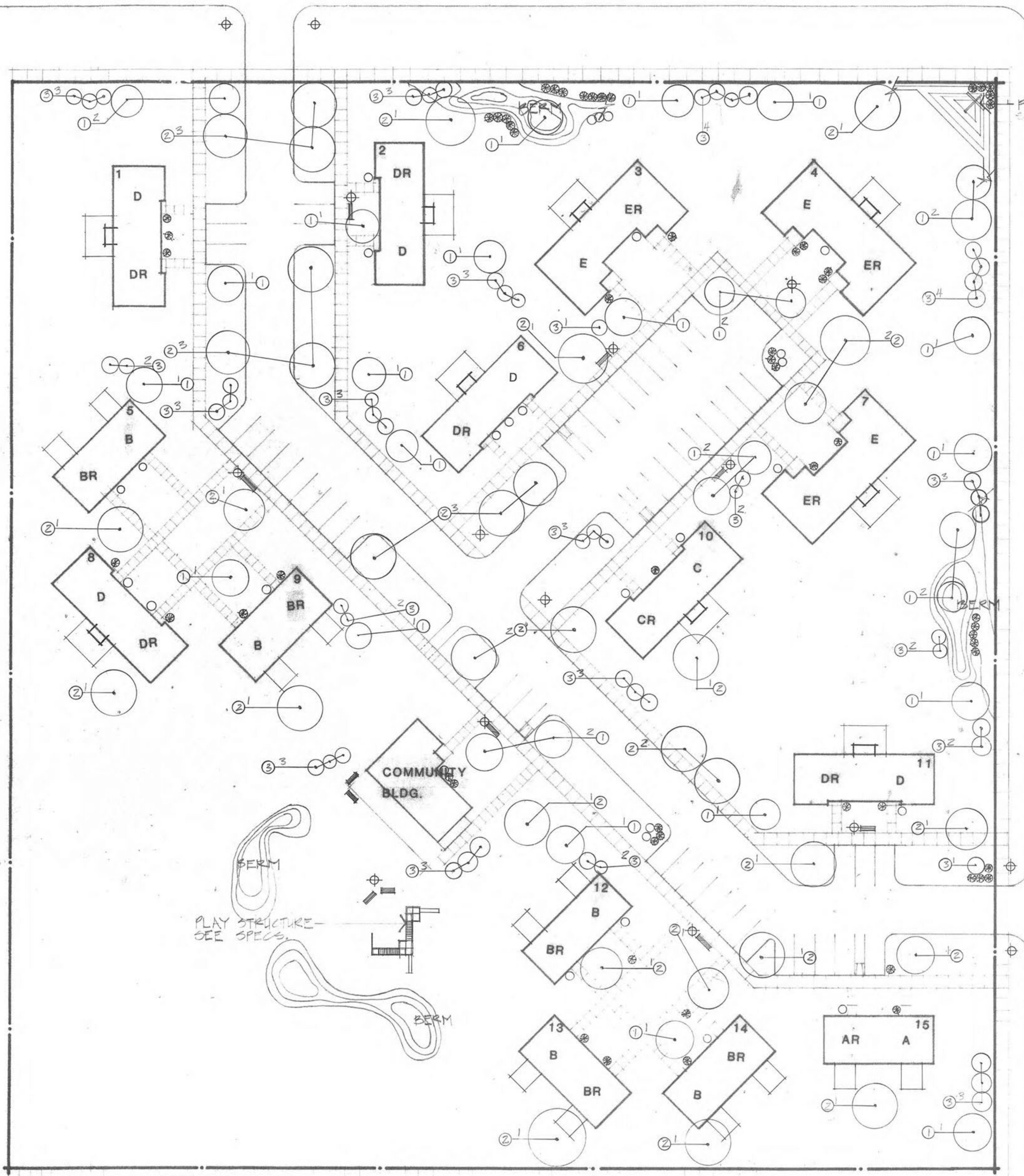
**UTILITIES SYMBOLS**

**NOTES**

1. ELECTRICAL & GAS SERVICE AS PER CENTRAL KANSAS POWER COMP. REQUIREMENTS.
2. ALL WATER MAIN LINES TO BE P.V.C AS SHOWN ON PLAN (2" OR 8"). SERVICE LINE TO UNITS SHALL BE 1/2" P.V.C OR AS PER CITY OF HAYS REQUIREMENTS.
3. ALL SANITARY SEWER SERVICE LINES TO BE 4" C.I.P. OR AS PER CITY OF HAYS REQUIREMENTS.



**1 UTILITIES PLAN**  
 SCALE: 1" = 30'-0"



PROJECT IDENT. SIGN  
SEE DTL. 2,3,4,5-SHT.

STEVEN DRIVE

LANDSCAPING SCHEDULE		
MARK	COMMON NAME	REMARKS
①	RADIANT CRABAPPLE	
②	SUMMIT ASH	
③	SPARTIN JUNIPER	
○	MANHATTAN ANONYMOUS	
⊗	WEITZER JUNIPER	
⊕	AREA LAMP	SEE UTILITIES
▬	BENCH	SEE SPECS.

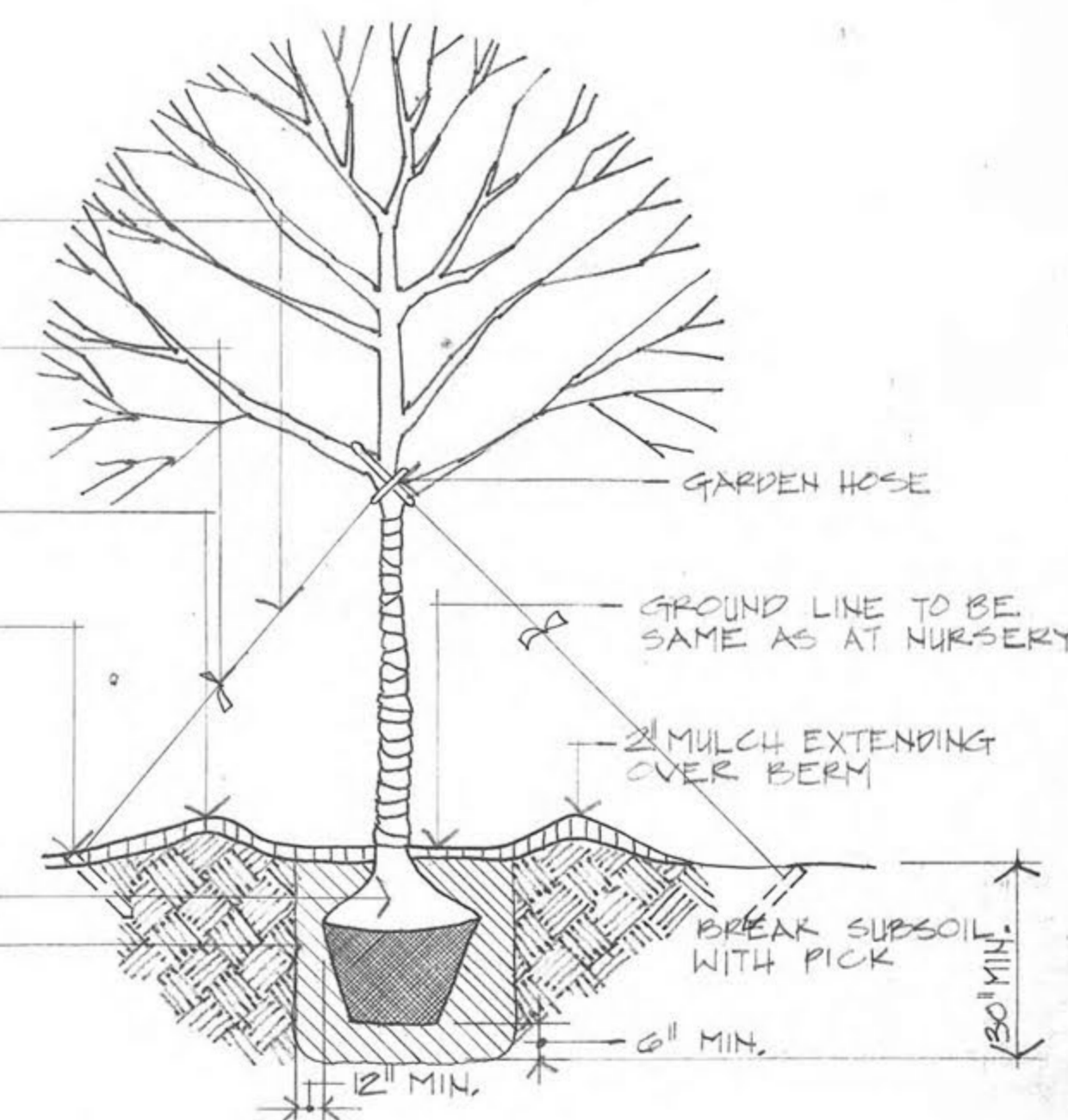
• PRUNE 1/3 BUT RETAIN NATURAL SHAPE OF TREE  
• SPRAY WITH WILTPROOF ACCORDING TO MFG.'S INSTRUCTIONS IF FOLIAGE IS PRESENT

POLE STRAND #10 GA. GALV. WIRE TWISTED 3 GUYS PER TREE (SPREAD 20" APART)

WHITE FLAGGING TAPE  
TREES LARGER THAN 1" CAL. SHALL BE WRAPPED IN WATERPROOF TREEWRAP & SECURED W. TWINE

CONSTRUCT EARTHLEVER W. 4" HIGH BERM. FLOOD W. WATER TWICE IN FIRST 24 HOURS  
2"x4"x3'-0" STAKE (TOP OF STAKE FLUSH W. GROUND)

REMOVE BURLAP FROM TOP OF BALL  
BACKFILL W. TOPSOIL & PEATMOSS 3:1 RATIO BY VOLUME IN 4" LAYERS. WATER EACH LAYER UNTIL SETTLED. DO NOT TAMP.



1 LANDSCAPING PLAN  
SCALE 1" = 30'-0"

2 SHRUB/TREE PLANTING DETAIL  
NO SCALE



date 7/27/10  
drawn by JEM  
checked by RAV  
revisions:

A THIRTY UNIT HOUSING PROJECT  
FOR THE LOCAL HOUSING AUTHORITY OF HAYS, KANSAS  
architectural services PLUS · 2141 centennial road · salina, kansas 67401 · 913 - 825 - 2727

