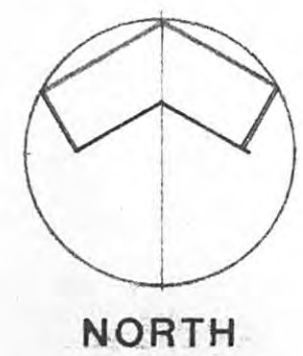
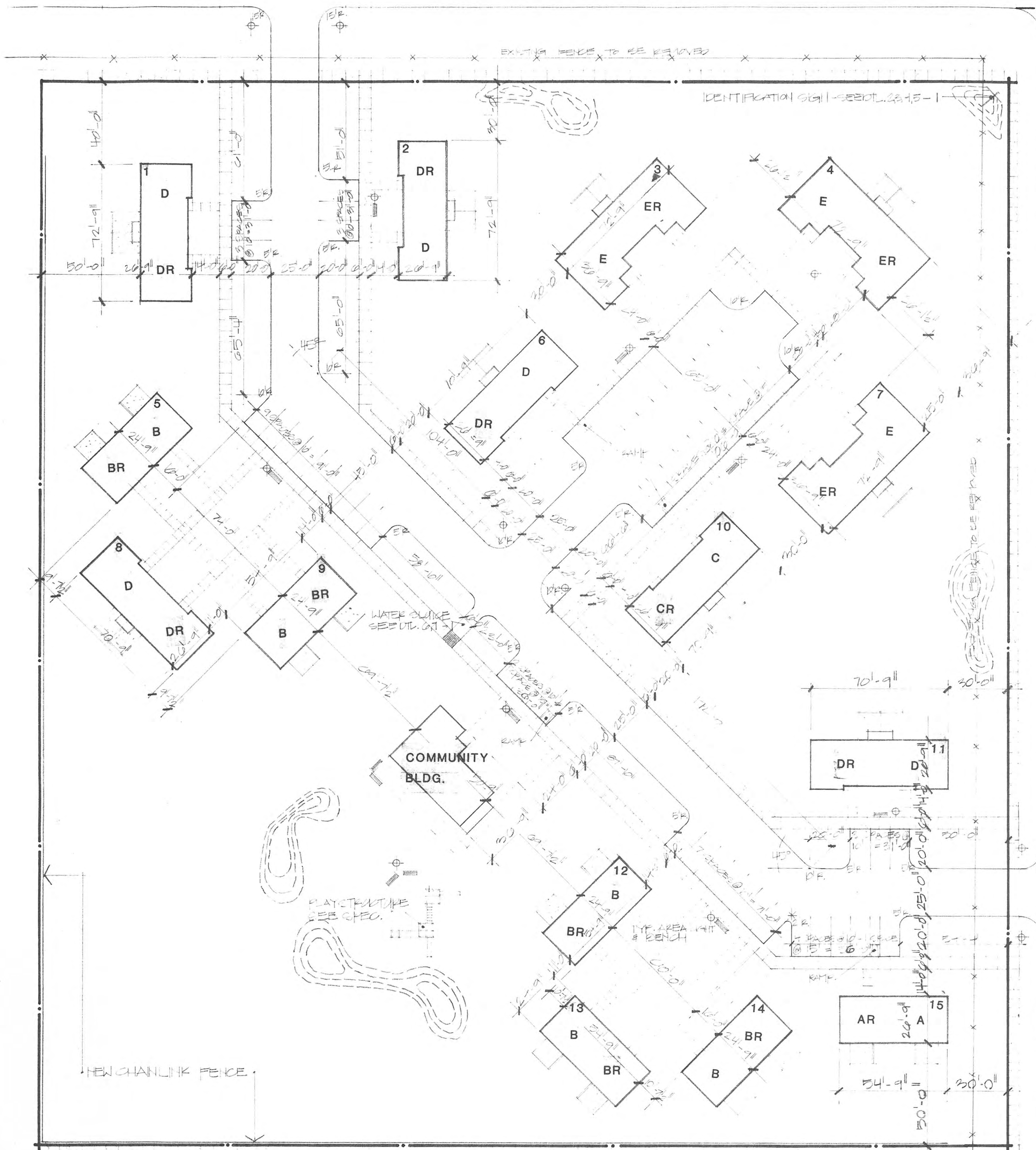


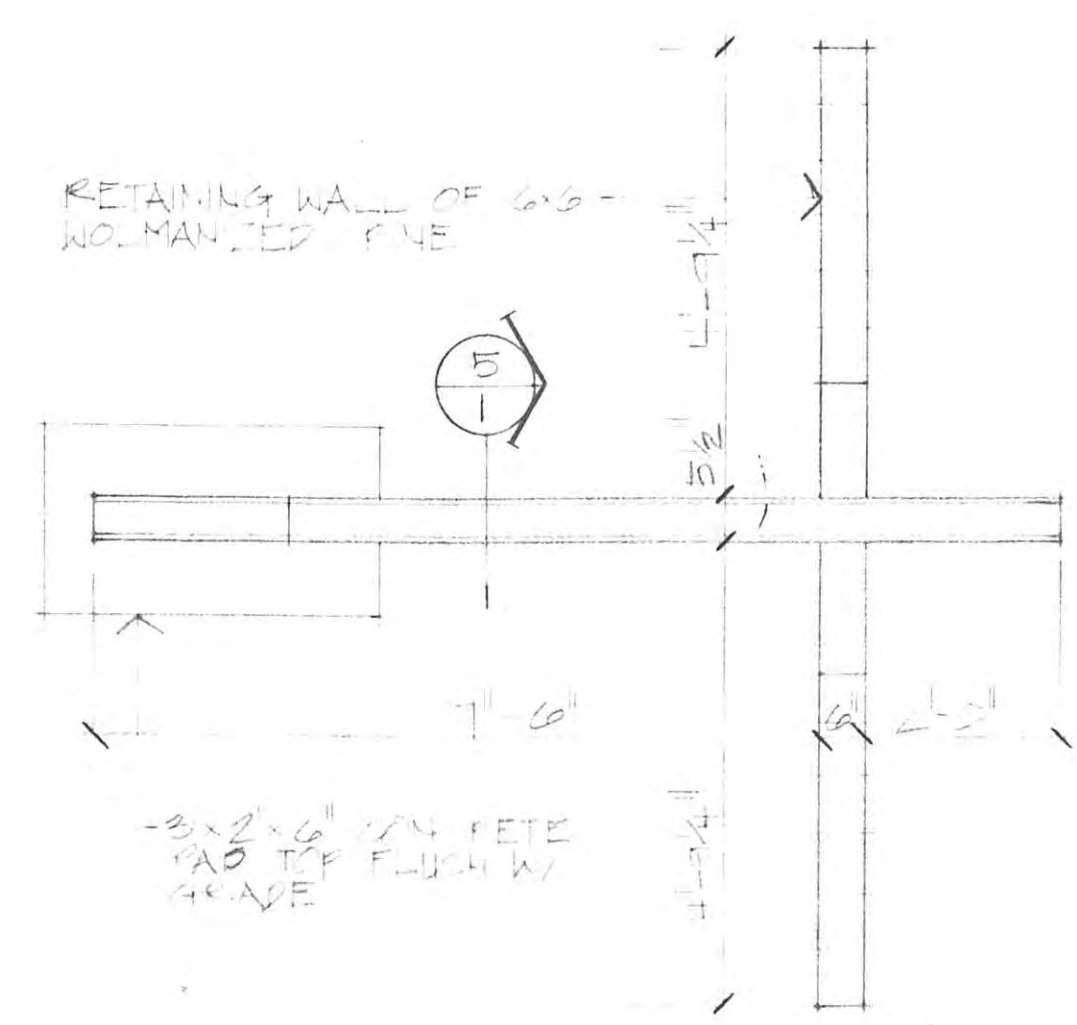
THIRTEENTH STREET



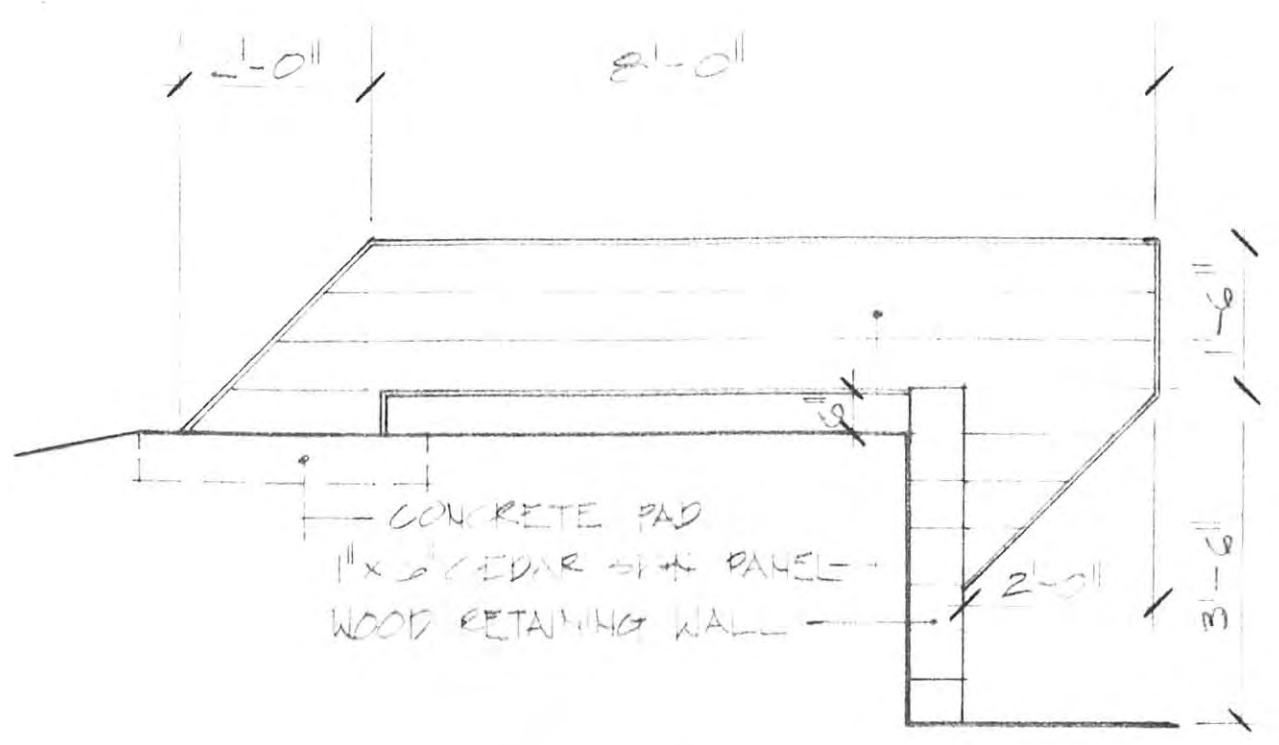
1 SITE PLAN
SCALE: 1" = 30'-0"

- LEGEND**
- AREA LIGHT - SEE UTILITY
 - BENCH - SEE CHEDS
 - HANDICAPPED RAMP
 - EARTH BERM

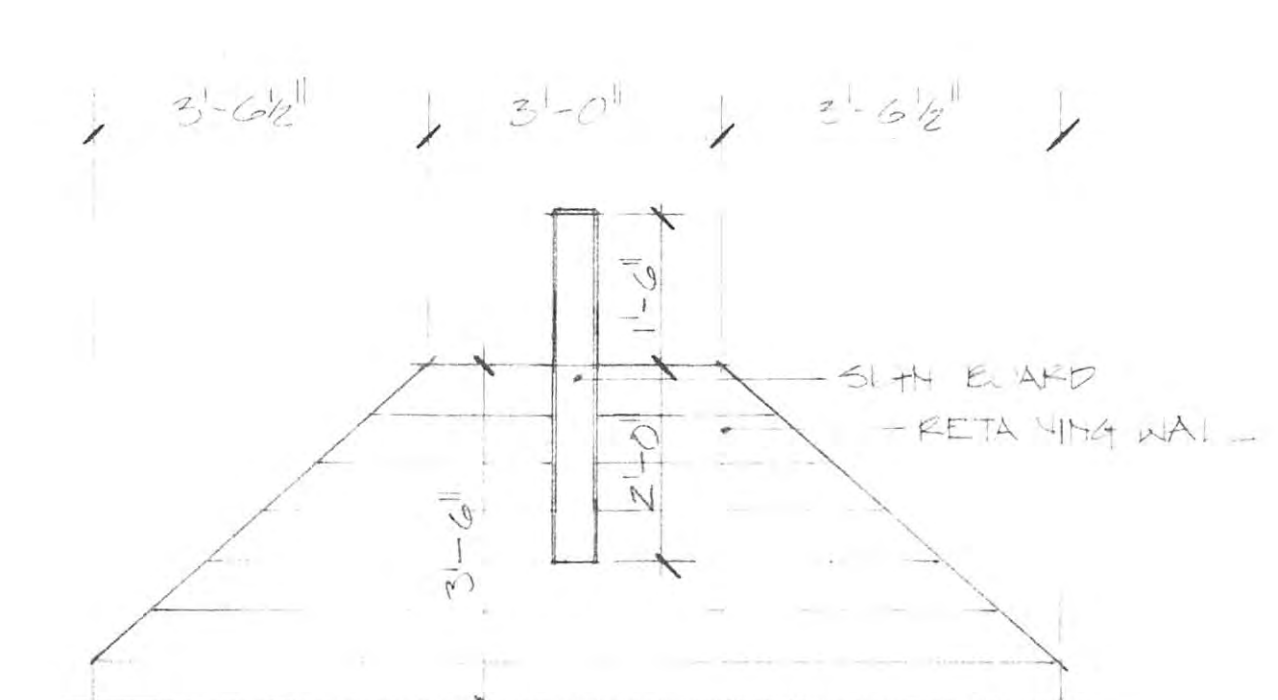
- NOTES**
1. ALL DIMENSIONS TO FACE UNLESS NOTED
 2. ALL STREET CURBS & UTILITY COORDINATION TO BE DONE BY CONTRACTOR TO COMPLY WITH CITY OF HAYS STANDARDS.



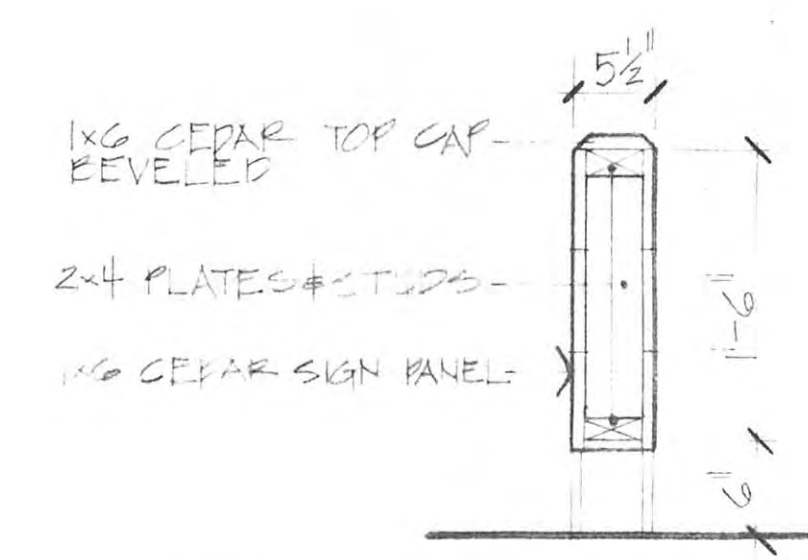
2 IDENT. SIGN PLAN
SCALE 1/2" = 1'-0"



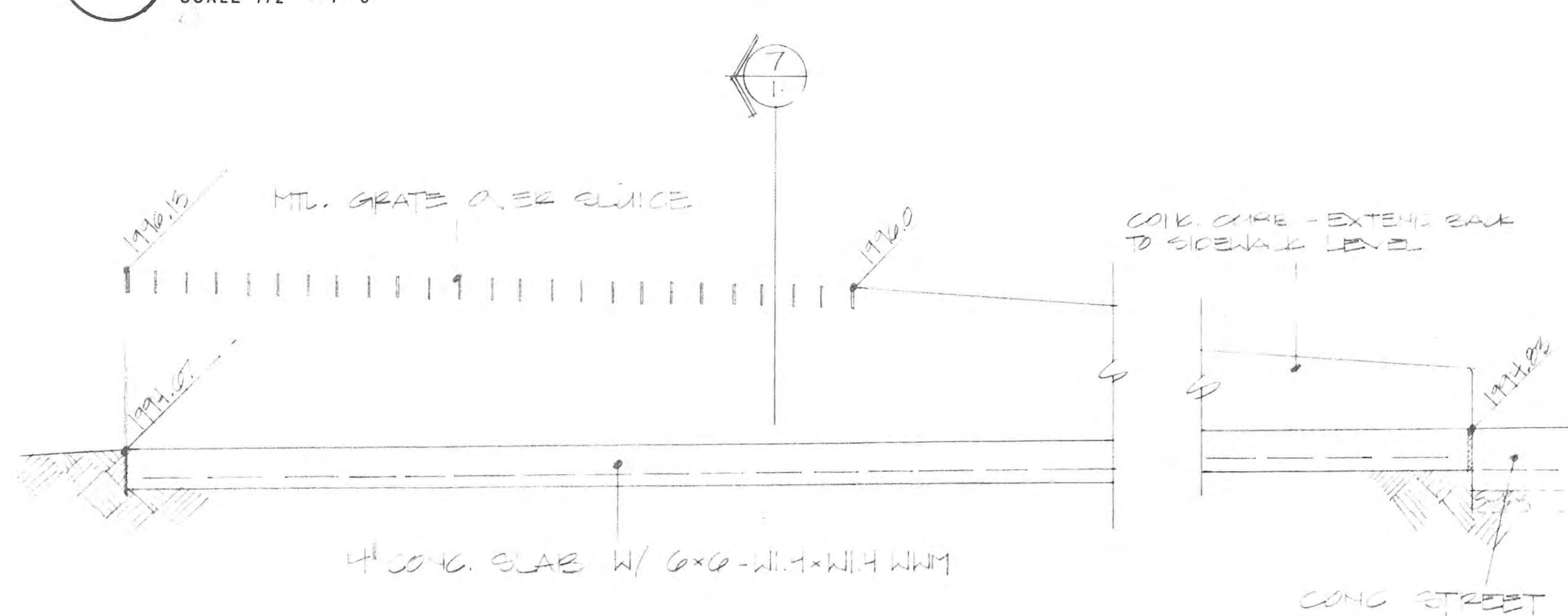
3 IDENT. SIGN SIDE ELEVATION
SCALE 1/2" = 1'-0"



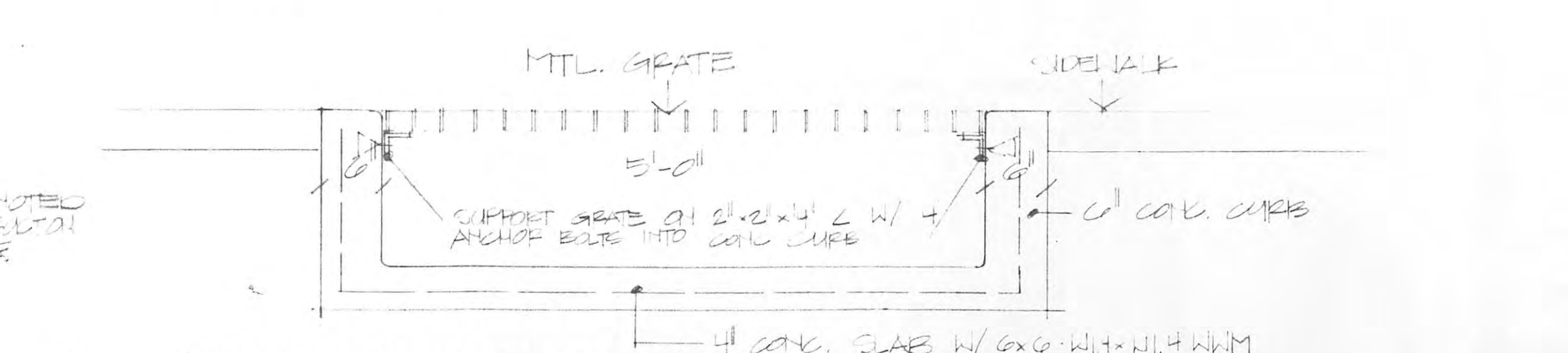
4 IDENT. SIGN FRONT ELEVATION
SCALE 1/2" = 1'-0"



5 IDENT. SIGN SECTION
SCALE 1" = 1'-0"



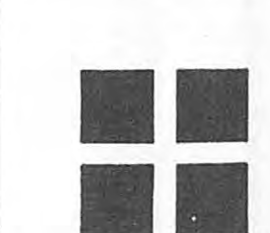
6 WATER SLUICE DETAIL
SCALE 1" = 1'-0"



7 WATER SLUICE SECTION
SCALE 1" = 1'-0"

A THIRTY UNIT HOUSING PROJECT
FOR THE LOCAL HOUSING AUTHORITY OF HAYS, KANSAS

architectural services PLUS · 2141 centennial road · salina, kansas 67401 · 913 - 825 - 2727



date: 7.26.17
drawn by: JAS/JFA
checked by: KAY
revisions:
