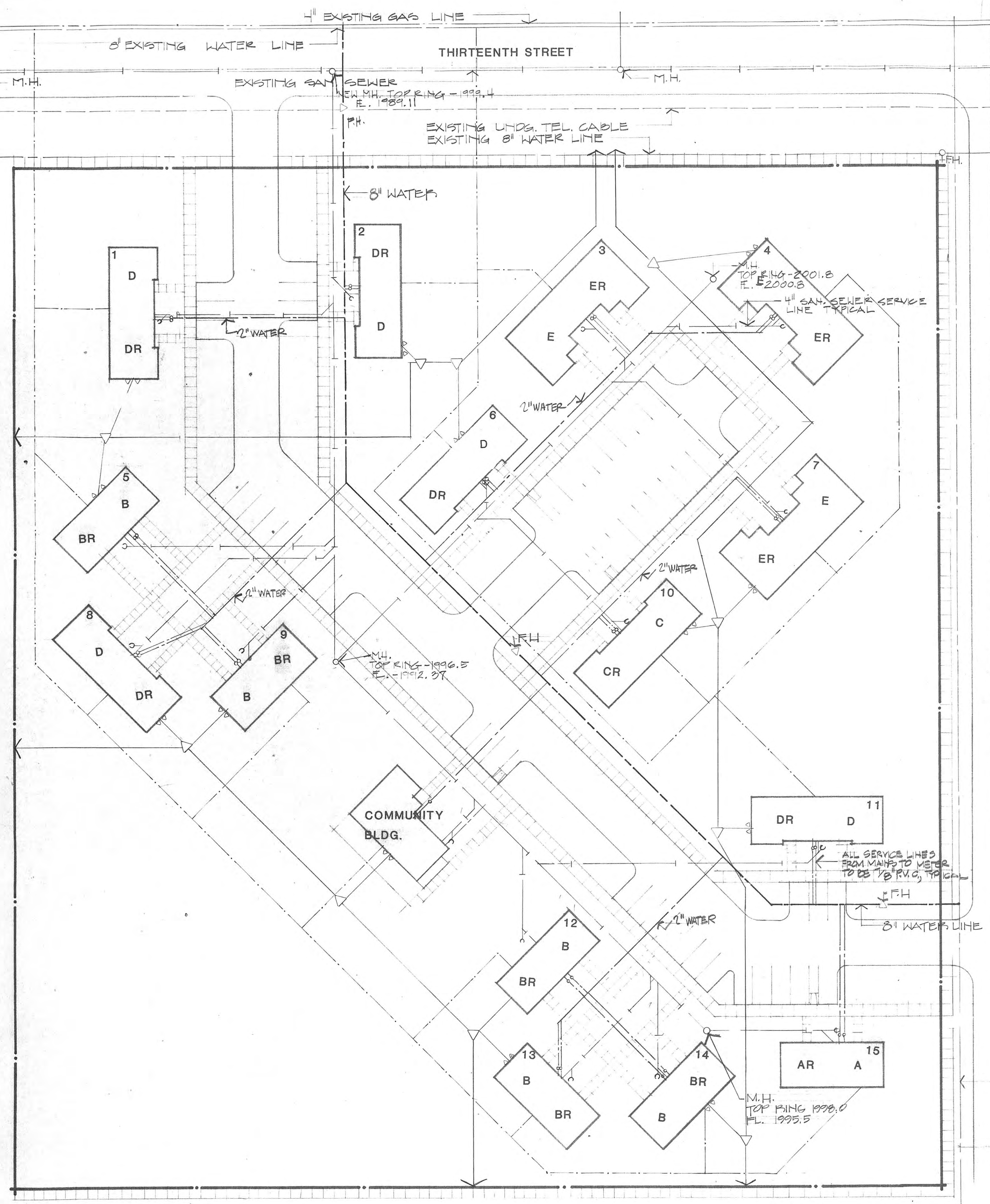


DATE: 7-20-79
 DRAWN BY: NEW
 CHECKED BY: KANA
 EXAMINED BY:

A THIRTY UNIT HOUSING PROJECT
 FOR THE LOCAL HOUSING AUTHORITY OF HAYS, KANSAS
 architectural services PLUS · 2141 centennial road · salina, kansas 67401 · 913 - 825 - 2727

sheet
4
 of 23



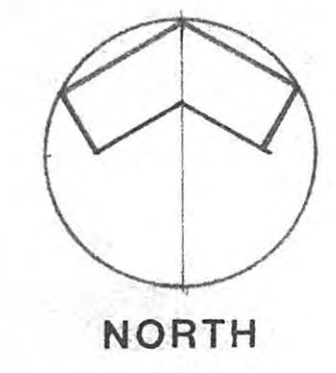
—	ELECT. LINE	—	WATER SERVICE
△	ELECT. SERVICE	○	WATER METER
△FH	FIRE HYDRANT	—	GAS LINE
♀	YARD HYDRANT	□	GAS METER
—	SEWER CLEANOUT	—	SAN. SEWER LINE
△	TRANSFORMER	—	UNDG. TEL. CABLE

UTILITIES SYMBOLS

NOTES

1. ELECTRICAL & GAS SERVICE AS PER CENTRAL KANSAS POWER COMP. REQUIREMENTS.
2. ALL WATER MAIN LINES TO BE P.V.C AS SHOWN ON PLAN (2" OR 8"). SERVICE LINE TO UNITS SHALL BE 1/2" P.V.C OR AS PER CITY OF HAYS REQUIREMENTS
3. ALL SANITARY SEWER SERVICE LINES TO BE 4" C.I.P. OR AS PER CITY OF HAYS REQUIREMENTS

STEVEN DRIVE



1 UTILITIES PLAN
 SCALE: 1" = 30'-0"