

DEDICATION

KNOW ALL MEN BY THESE PRESENTS THAT I, John F. Cunningham, of Concordia, Kansas, have caused to be surveyed and platted, for record in accordance with the Laws of the State of Kansas a certain portion of Section, Thirteen (13) Township Twelve (12) South, Range Nineteen (19) West of 6th P.M. and of Section Twenty Three (23), Township Thirteen (13) South, Range Nineteen (19) West of 6th P.M. and of Section Twenty Four (24), Township Thirteen (13) South, Range Nineteen (19) West of 6th P.M. all in Ellis County, Kansas, to be named and known as Hyacinth.

The Plat hereto attached and made a part hereof, is a true and correct Plat of said Townsite, showing all Streets, Alleys and Church Grounds, by their causes, boundaries and extent.

The length and width of Blocks and Lots for sale being indicated by figures on said Plat.

The length and width of all Streets and Alleys being shown in like manner.

All Streets, Alleys and Public Grounds as shown on Plat, being hereby dedicated for Public Use.

IN WITNESS WHEREOF I have hereunto set my hand this ---

2nd day of Sept. A.D. 1916

State of Kansas, Ellis County, ss.  
 This 2nd day of Sept. 1916, at Concordia, Kansas, I, John F. Cunningham, County Clerk, do hereby certify that the foregoing is a true and correct copy of the original plat of said townsite, as the same appears from the records of said County Clerk's office.  
John F. Cunningham  
 COUNTY CLERK

John F. Cunningham  
 Notary Public

STATE OF Kansas, Cloud COUNTY SS:

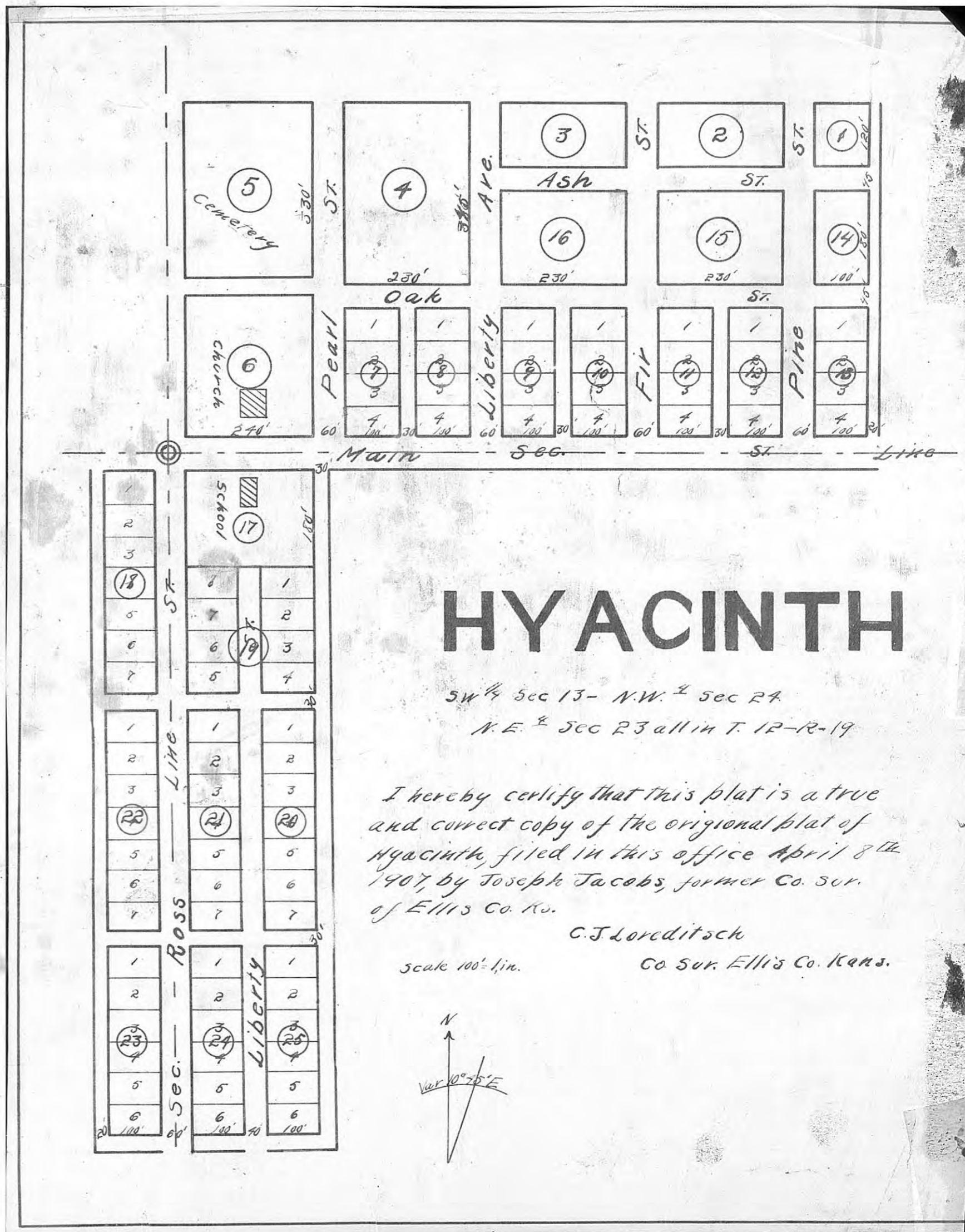
Be it remembered, that on this 2nd day of,

Sept A.D. 1916, before me, the undersigned, a Notary Public, in and for the County and State aforesaid, came John F. Cunningham, who is personally known to me to be the same person who executed the within instrument in writing and such person duly acknowledged the execution of same.

IN TESTIMONY WHEREOF I have hereunto set my hand and affixed my Notary Seal, the day and year above written.

R. C. Anderson  
 Notary Public

Term Expires Nov. 8-1918



# HYACINTH

SW 1/4 Sec 13 - N.W. 1/4 Sec 24  
 N.E. 1/4 Sec 23 all in T. 12-R-19

I hereby certify that this plat is a true and correct copy of the original plat of Hyacinth, filed in this office April 8th 1907, by Joseph Jacobs, former Co. Sur. of Ellis Co. Mo.

C. J. Loreditack  
 Co. Sur. Ellis Co. Kans.

Scale 100' = 1 in.

