

Legal:

Beginning 30' East & 33' North of S.W. Corner  
Sec. 31, T.13, R.16, thence North 1287' parallel to  
West line said Sec. 31, thence East 2610' Parallel  
to South line Sec. 31, thence South 1287' parallel to West  
line Sec. 31, thence West 2610' parallel to South line Sec. 31  
to place of beginning.

# I-70 VILLAGE

S<sup>2</sup> S.W<sup>4</sup> Sec. 31, T.13, R.16

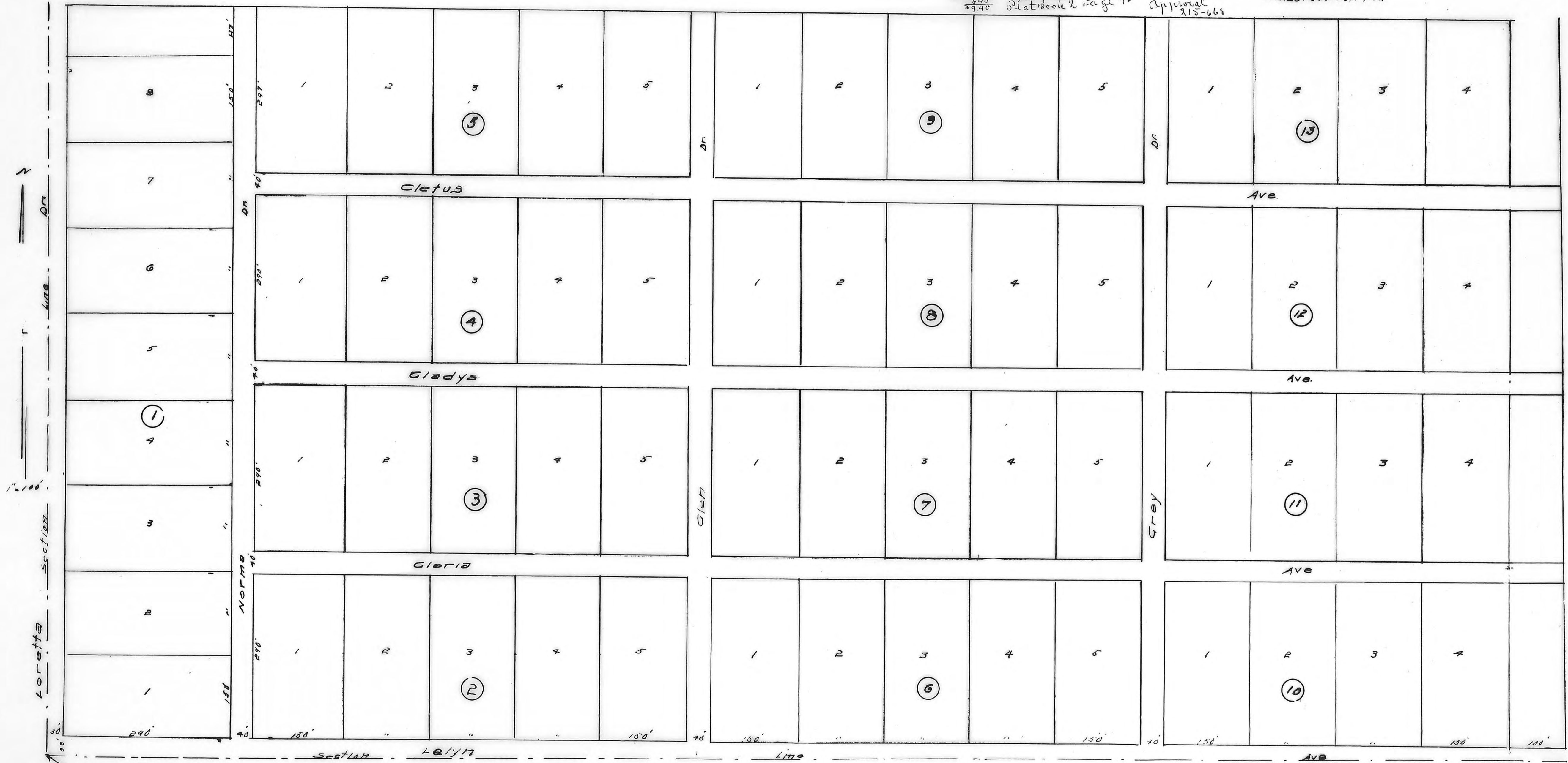
STATE OF KANSAS  
ELLIS COUNTY  
This instrument was filed for record

AUG 28 1964

4.00 of 3.00 recorded in  
2.12 of 0.85 page 666  
Fess. 2.00  
6.40  
9.40  
Register of Deeds  
Platbook 2 Page 92

I hereby certify that this is a true &  
correct plat of a survey of a tract in S.W<sup>4</sup>  
Sec. 31, T.13, R.16 Ellis County Kansas

C. J. Lored / Sch. RE.



S.W. Cor. Sec. 31, T.13, R.16

THIS IS A DIRECT PHOTOGRAPHIC REPRODUCTION OF THE OFFICIAL INSTRUMENT (RECORDED PLAT).  
THIS REPRODUCTION WAS MADE BY BUCHER & WILLIS, CONSULTING ENGINEERS, PLANNERS & ARCHITECTS IN NOVEMBER, 1979.