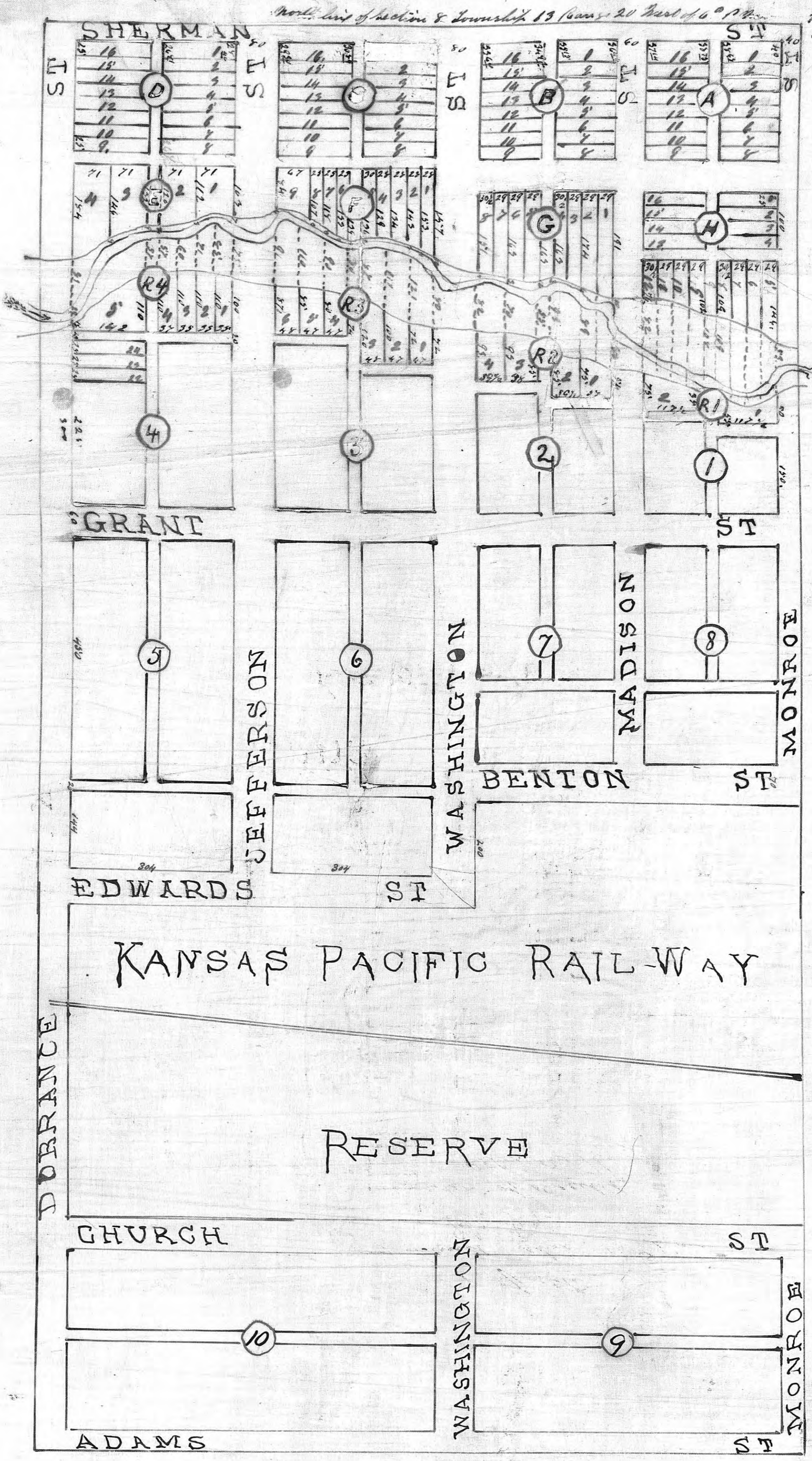


Scale  
ONE INCH = 150 FEET



State of Kansas  
Ellis County  
County Surveyor of Ellis County State of Kansas, do hereby certify that this map shown truly and correctly, in the manner in which blocks A, B, C, D, E, F, G, H, and 1 also Reserve number 1, 2, 3, 4 shown on the original recorded plat of the Town of Ellis have now been subdivided into lots 22, 23 & 24 which have been added to block 4 are made up of land taken from Reserve 4 and of the alley formerly between Reserve 4 and Block 4. The length and width of the lots and the width of the streets and alleys are indicated on above plat and the position of the creek is indicated on the plat in dotted lines and figures on red.  
Witness my hand and seal this 31<sup>st</sup> day of December  
H. H. Wilson  
County Engineer and County Surveyor for Ellis County

Subdivision of Blocks  
A, B, C, D, E, F, G & H  
also  
Reserve Blocks 1, 2, 3 & 4  
in  
The Town of Ellis, Kansas

In testimony whereof the Union Pacific Railway Company its successors the Kansas Pacific Railway Company and now its promoters of the property subdivided by the survey shown on this plat and described in the survey Certificate for said survey presented to his President assisted by its assistant secretary and sealed with the seal of the said Corporation attested this  
day of  
Sidney Dillon President  
A. K. Leahy Vice Secretary

State of New York  
City and County of New York  
On this 11<sup>th</sup> day of January A.D. one thousand eight hundred and eighty two before me the undersigned Commissioner resident in the City of New York duly Commissioner and qualified under the laws of Kansas to take acknowledgements of deeds and Sidney Dillon President of the Union Pacific Railway Company personally known to me to be the same person who executed the foregoing instrument and acknowledged its execution of the same  
A. K. Leahy  
Commissioner of Deeds



I certify that above to be a true copy of the original now on file. Witness my hand this 16<sup>th</sup> day of February 1882.  
J. P. Fox  
Clerk of Deeds,  
Ellis Co Kansas

ORDINANCE NO. 1241  
AN ORDINANCE VACATING A CERTAIN ALLEY IN THE CITY OF ELLIS, KANSAS AND RESERVING UTILITY EASEMENTS

WHEREAS a portion of alley located immediately between Lot Nine (9) of Block D of the Town of Ellis, and the City of Ellis, also described as Lots Nine (9), in Block D, Big Four (4) of the Union Pacific First (1<sup>st</sup>) Addition to the City of Ellis, in Ellis County, Kansas; and

WHEREAS on the 15<sup>th</sup> day of May, 1906, a public hearing was held for the vacation of said portion of alley described above and;

WHEREAS pursuant to K.S.A. 12-204 et. seq., due and proper notice by publication was given for said public hearing and;

NOW, THEREFORE, BE IT ORDAINED BY THE GOVERNING BODY OF THE CITY OF ELLIS, KANSAS, THAT:

Section 1: The Governing body of the City of Ellis, Kansas, after hearing all evidence presented regarding a vacation of said alley and after due and proper consideration of vacation of said portion of an alley described as follows:

Between Lot Nine (9) of Block D of the Town of Ellis, now the City of Ellis, also described as Lots Nine (9), in Block D, Big Four (4) of the Union Pacific First (1<sup>st</sup>) Addition to the City of Ellis, and Lots Three (3) and Four (4) of Block E of the Town of Ellis, now the City of Ellis, in Ellis County, Kansas;

That the due and legal notice has been given by publication as required by K.S.A. 12-204 et. seq., that no private rights will be injured or endangered by such vacation, that the public will suffer no loss or inconvenience thereby, and that vacation of said alley should be granted.

Section 2: The portion of the alley described in Section 1 above is hereby vacated provided that there shall be reserved to the City of Ellis, Ellis County, Kansas and the owners of any lower property rights for public utilities as an easement for said public service facilities, which may have originally been held in said alley from its existence and use.

Section 3: The Clerk of the City of Ellis, Kansas is hereby directed to certify a copy of this ordinance and deliver it to the Register of Deeds, Ellis County, Kansas for recording.

City of Ellis  
115 Jefferson  
Ellis, Kansas 67037

BOOK 648 PAGE 805