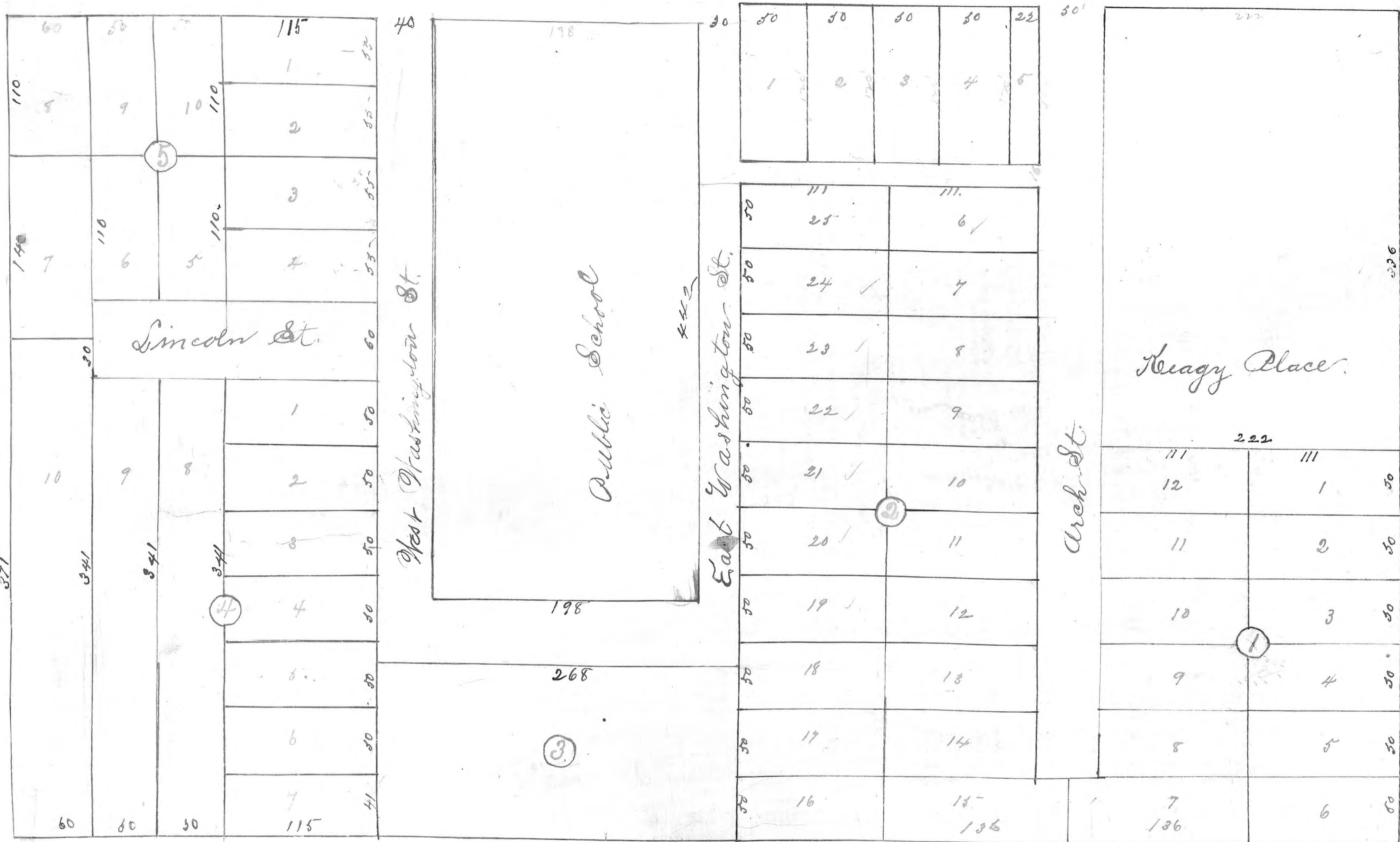


# Keagy's 3<sup>rd</sup> Addition To Ellis.



I hereby certify that the foregoing is a true and correct plat of Keagy's 3<sup>rd</sup> Addition to the town of Ellis, Ellis County - Kansas as surveyed by me. The initial point of said survey is at the North East corner of Keagy's place which is a point 60 feet south of the North East corner of Block 7 of Keagy's 2<sup>nd</sup> Addition and from said point all distances are calculated with of streets and alleys and dimensions of lots are indicated by figures in margin. Witness my hand this 21<sup>st</sup> day of May AD 1887.

Nathaniel Robbins  
Surveyor

Filed for record May 23<sup>rd</sup> AD 1887.

Ele E. Cox, Reg.  
By Will B. Robbins, Dep.