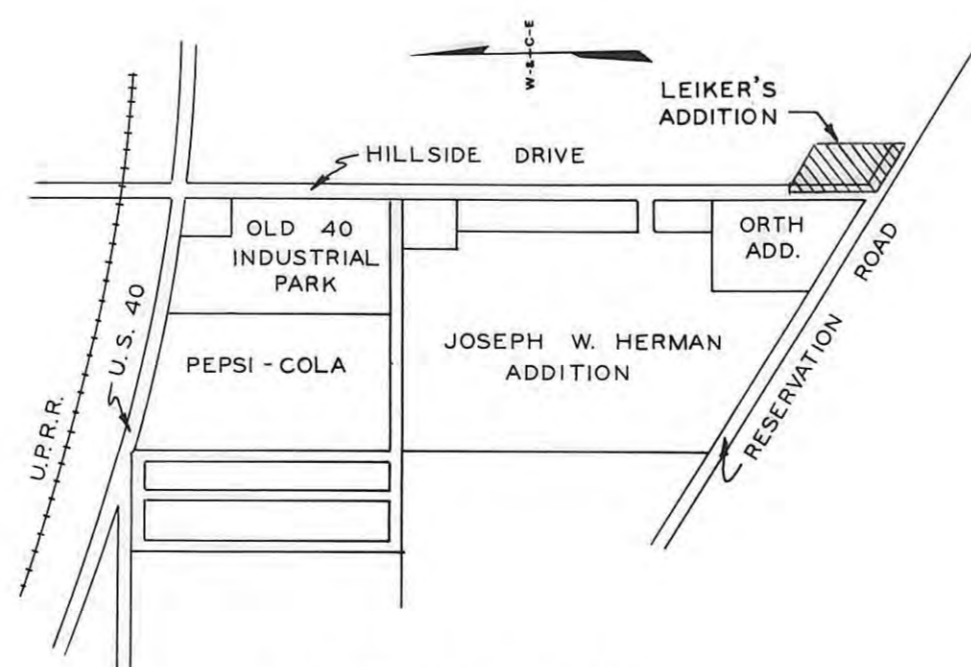
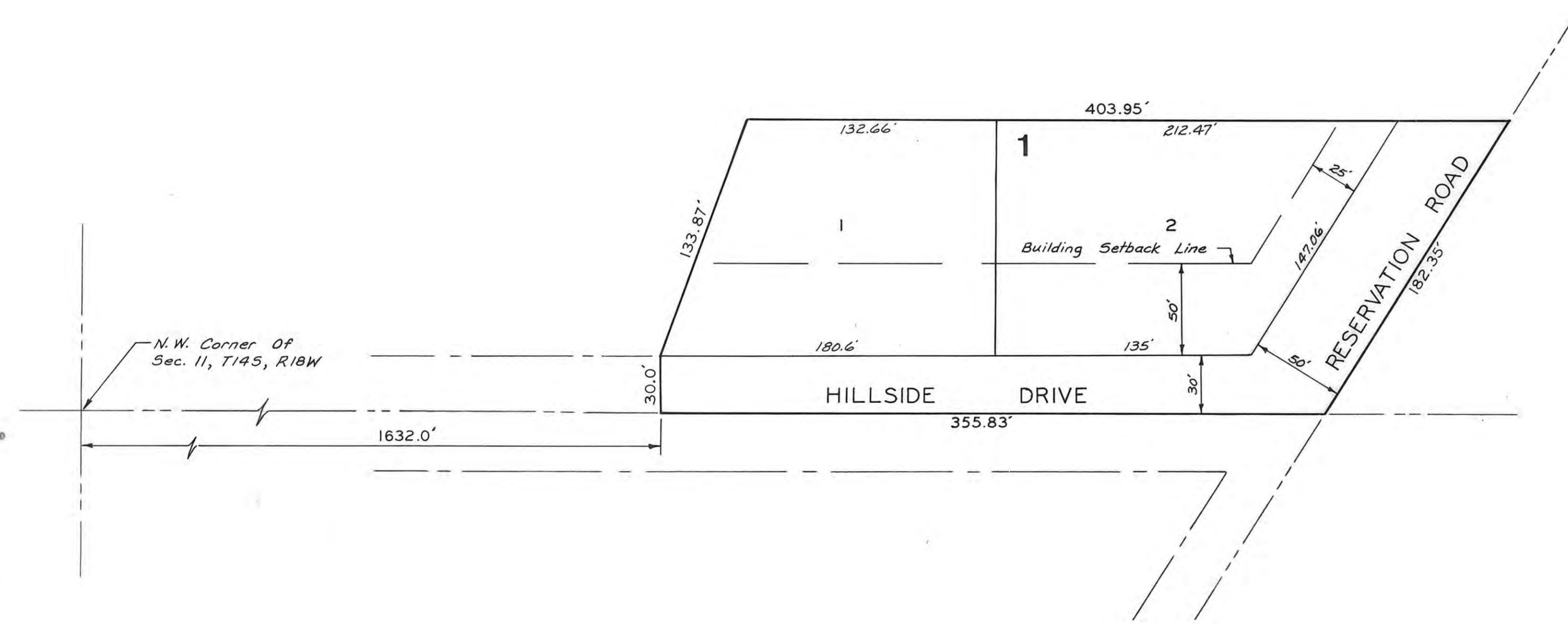
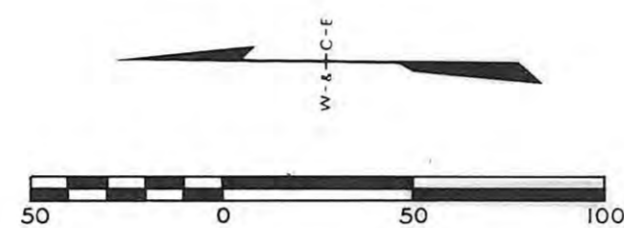


LEIKER'S ADDITION

ELLIS COUNTY, KANSAS



LOCATION MAP
NOT TO SCALE

LEGAL DESCRIPTION:

A tract of land in the Northwest one-quarter of Section 11, Township 14 South, Range 18 West of the Sixth Principal Meridian, Ellis County, Kansas and further described as follows:

Beginning at a point on the West line of Section 11, a distance of 1,632.00 feet South of the Northwest corner of Section 11; thence, North 89 degrees 58 minutes 45 seconds East a distance of 30.00 feet; thence South 69 degrees 02 minutes 14 seconds East a distance of 133.87 feet; thence, South 00 degrees 01 minutes 15 seconds East a distance of 403.95 feet; thence, North 58 degrees 13 minutes 49 seconds West along the Fort Hays Military Reservation line a distance of 182.35 feet; thence, North 00 degrees 01 minutes 15 seconds West along the West line of Section 11, a distance of 355.83 feet to the point of beginning. Tract contains 1.36 acres more or less.

STREETS, ALLEYS, AND EASEMENTS:

Streets, alleys, and easements shown on this plat and not heretofore dedicated for public and private use are hereby dedicated for public and private use and may be employed for the purpose of installing, repairing, and maintaining all public and private utilities now or hereafter.

OWNER'S CERTIFICATE:

State of Kansas, County of Ellis, ss

This is to certify that the undersigned are the owners of the land described in the plat, and that they have caused the same to be surveyed and subdivided as indicated thereon, for the uses and purposes therein set forth, and do hereby acknowledge and adopt the same under the style and title thereon indicated.

All street right-of-way as shown on this plat are hereby dedicated to the public. An easement or license to the public to locate, construct and maintain or authorize the location, construction and maintenance of poles, wires, conduits, water, gas, and sewer pipes or required drainage channels or structures upon the area marked for easements on this plat is hereby granted.

Given under our hands at Hays, Kansas this 7 day of January, 1985

Larry D. Leiker Kellie S. Leiker Henry Schwaller, Jr.
 Larry D. Leiker Kellie S. Leiker Henry Schwaller, Jr., Pres. First of Kansas SAVINGS, Mortgagee

NOTARY CERTIFICATE:

I, a Notary Public in and for Ellis County, in the State of Kansas, do hereby certify that Larry D. Leiker, Kellie S. Leiker, and Henry Schwaller Jr., President of First of Kansas SAVINGS, Mortgagee, personally known to me to be the same persons whose names are subscribed to the foregoing instrument as such owners, appeared before me this day in person and acknowledged that they signed the plat at their own free and voluntary act for the use and purpose herein set forth.

Given under my hand and Notarial Seal this 4th day of December, 1984.

My Commission Expires:



Tanya A. Rous
 Notary Public

ENGINEER'S CERTIFICATE:

I, a licensed professional engineer in the State of Kansas, do hereby certify this plat to be true and correct to the best of my knowledge.

Harold H. Munger, Jr.
 P.E.

APPROVALS:

This plat of Leiker's Addition has been submitted to and approved by the Planning Commission this 15 day of October, 1984.

Secretary Chairman

The dedications shown on this plat accepted by the City Commission of the City of Hays, Kansas, this 13th day of December, 1984.

Mayor City/Clerk

The dedications shown on this plat are accepted by the County Commission of Ellis County, Kansas this 7th day of January, 1985.

County Clerk

ATTEST: County Clerk

The above and foregoing plat is hereby approved by the County Attorney of Ellis County, Kansas this 7th day of January, 1985.

County Attorney

State of Kansas, County of Ellis, ss

This is to certify that this instrument was filed for record in the Register of Deeds Office on the 29 day of January, 1985, in Plat's Cabinet, No. 317.

Register of Deeds Deputy

Plat & Note Bk 349 - Page 264
Rest Bk 349 - Page 248

| | | | |
|-------------------|--------|--------|-----------|
| LEIKER'S ADDITION | | | |
| DESIGN: | DRAWN: | FILE: | |
| | VRR | 84601 | |
| | | DATE: | OCT. 1984 |
| | | SHEET: | 1 OF 1 |