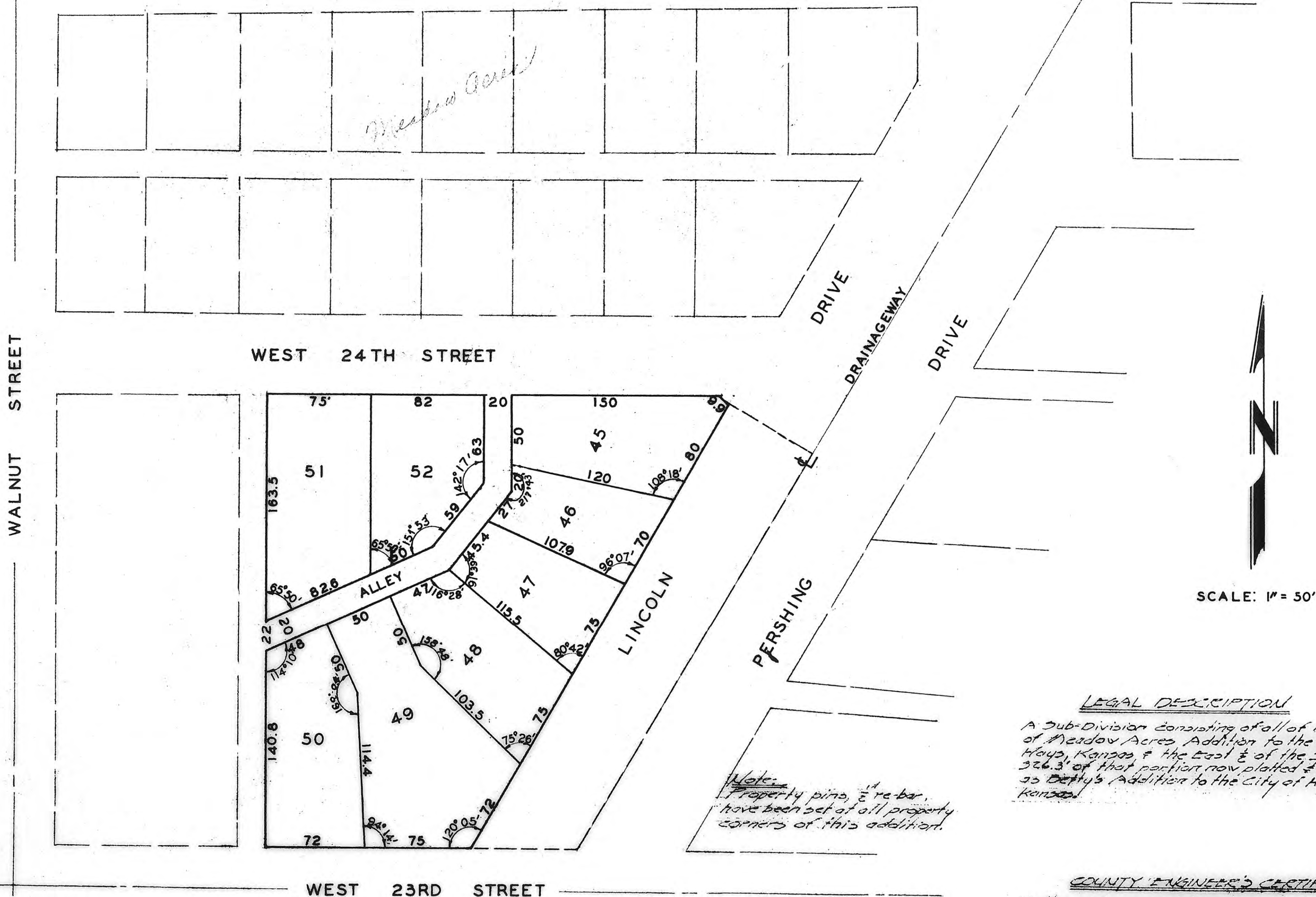


MEADOW ACRES SECOND ADDITION TO THE CITY OF HAYS

WEST 27TH STREET



SCALE: 1" = 50'

LEGAL DESCRIPTION

A Sub-Division consisting of all of lot 45 of Meadow Acres Addition to the City of Hays, Kansas & the East 1/2 of the South 326.3' of that portion now platted & known as Deby's Addition to the City of Hays, Kansas.

Note:
Property pins, & re-bar,
have been set at all property
corners of this addition.

COUNTY ENGINEER'S CERTIFICATE

I, the undersigned, C. J. Lorditch, Ellis County Engineer and a licensed professional engineer do hereby appoint John W. Smith, Deputy County Engineer for the purpose of surveying & plotting the Meadow Acres Second Addition to the City of Hays, Hays, Kansas.

Signed this 7th day of June

C. J. Lorditch
C. J. Lorditch County Engineer
Ellis County, Kansas

Engineer's Certificate

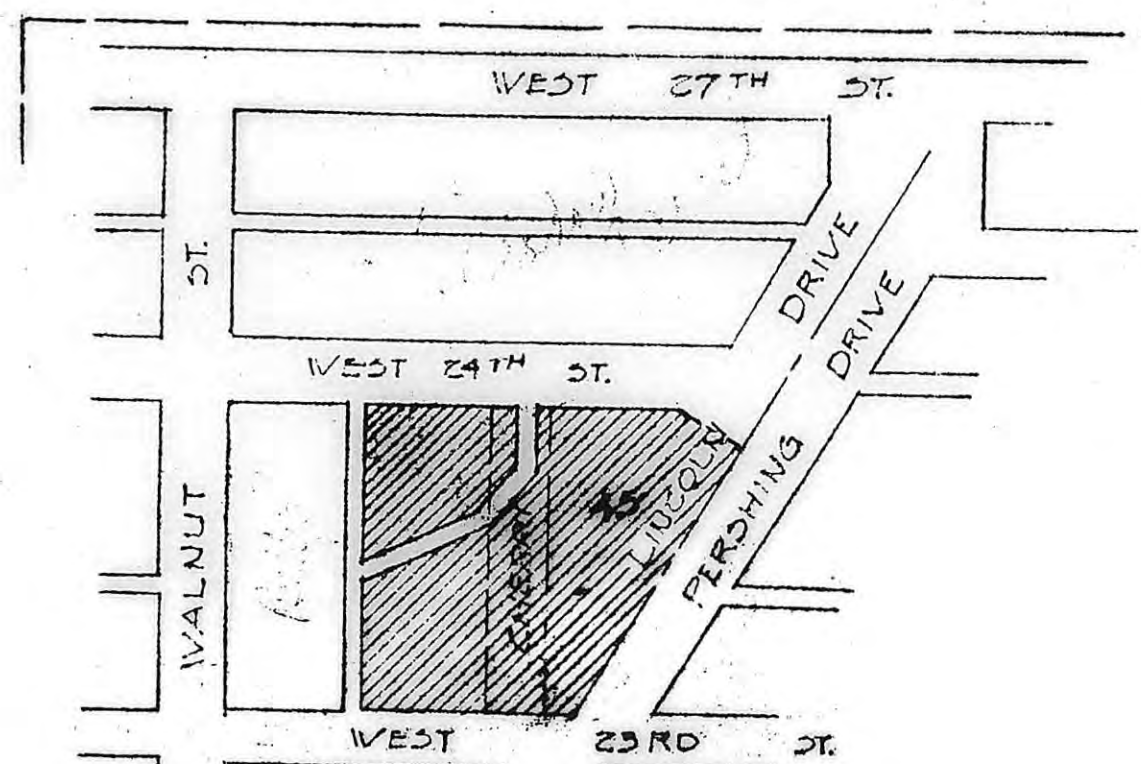
I, the undersigned, John W. Smith, a licensed professional engineer do hereby certify the above plat to be true & correct to the best of my knowledge.

Signed this 7th day of June

John W. Smith
John W. Smith - Professional Engineer

I hereby certify that this plat was first submitted to the City Planning Commission and by the City Planning Commission to the governing body of the City of Hays, Kansas, and by such governing body duly approved on June 12, 1957.

Dorothy Federblom
Dorothy Federblom
City Clerk.



LOCATION MAP

SCALE: 1" = 200'

STATE OF KANSAS
ELLIS COUNTY
This instrument was filed for record

JUN 20 1957

9:30 a.m. A.M. recorded in
of page 2
Register of Deeds

3.80

THIS IS A DIRECT PHOTOGRAPHIC REPRODUCTION OF THE OFFICIAL INSTRUMENT (RECORDED PLAT).

THIS REPRODUCTION WAS MADE BY BUCHER & WILLIS, CONSULTING ENGINEERS, PLANNERS & ARCHITECTS IN JUNE 1979