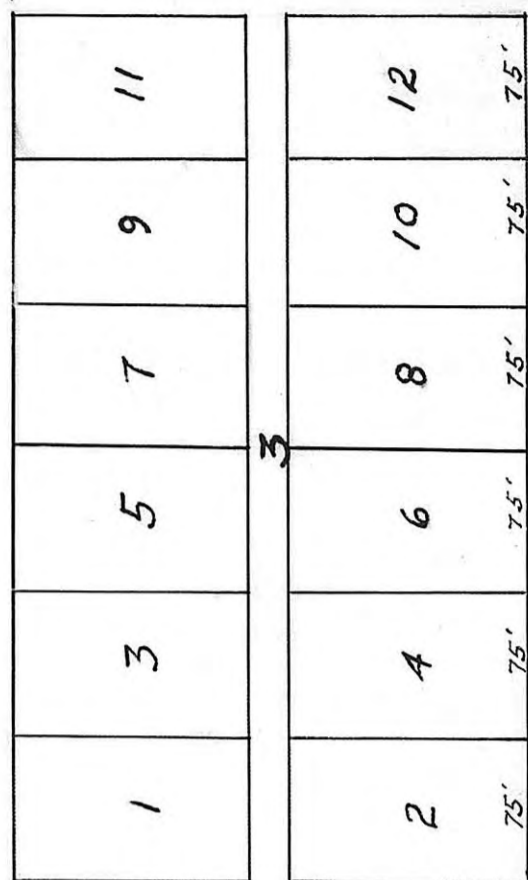


City Limits 1960

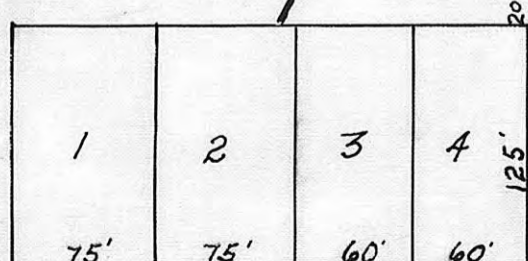
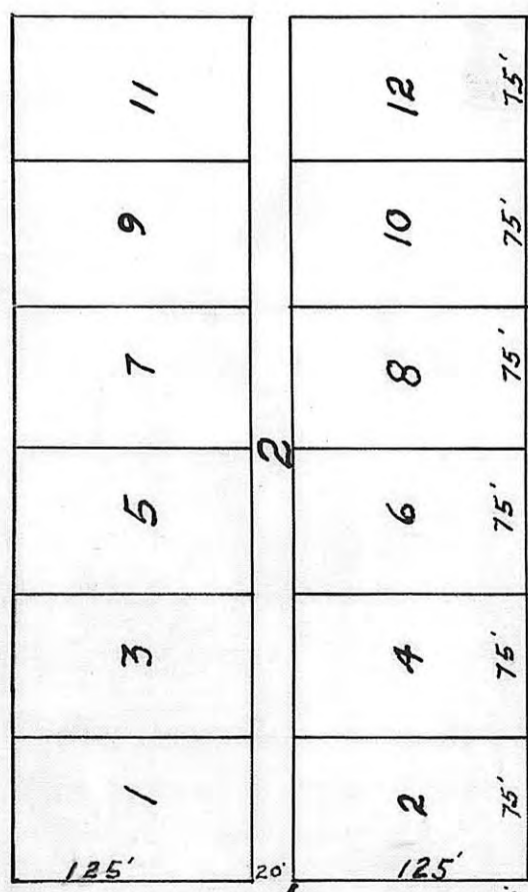
W 1/2 W 1/2 S 1/2 SW 1/4 Sec. 4 T13 R20



Void
See replat on page 70



Monroe Street



City Limits 1960

6th St

STATE OF KANSAS
 ELLIS COUNTY } *Copy of*
 This instrument was filed for record
 MAY 2 1960
 4:15 o'clock P.M. recorded in
 Book 2 of Plats page 1
 fees 3.80 Register of Deeds
 2.80 trans.
 5.80

Meadowbrook Acres
 Block 1, 2, 3
 Ellis County, Kans.
 Scale 1" = 100'

