

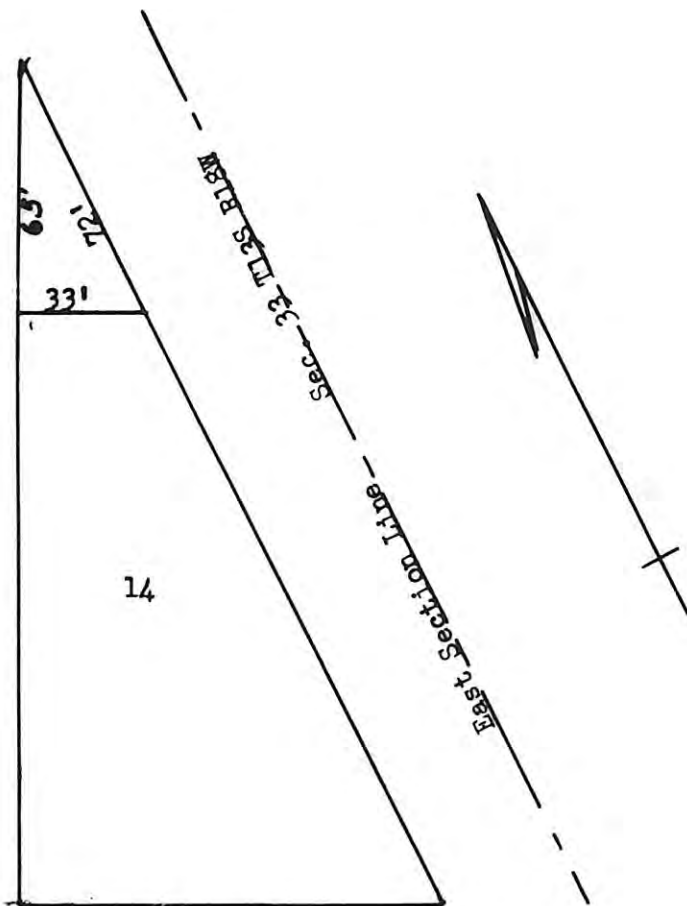
CITY OF HAYS, KANSAS



22ND STREET



MILNER STREET



PLAT SHOWING LOT 14 OF BLOCK 84  
 NORTH EAST ADDITION TO THE CITY  
 OF HAYS, KANSAS, AND THE TRACT OF  
 LAND TO BE DEDICATED TO THE CITY OF  
 HAYS FOR THE PURPOSE OF EXTENDING  
 TWENTY-SECOND STREET TO THE COUNTY  
 ROAD.

4100 P  
 2 Plate la  
 Al m Rome  
 200

APPROVED BY THE GOVERNING BODY 4-17-50

For Dedication See Misc Page 474

THIS IS A DIRECT PHOTOGRAPHIC REPRODUCTION OF THE  
 OFFICIAL INSTRUMENT (RECORDED PLAT).

THIS REPRODUCTION WAS MADE BY BUCHER & WILLIS,  
 CONSULTING ENGINEERS, PLANNERS & ARCHITECTS IN  
 JUNE 1979