

RE-PLAT OF NORTH HILLS SUB-DIVISION

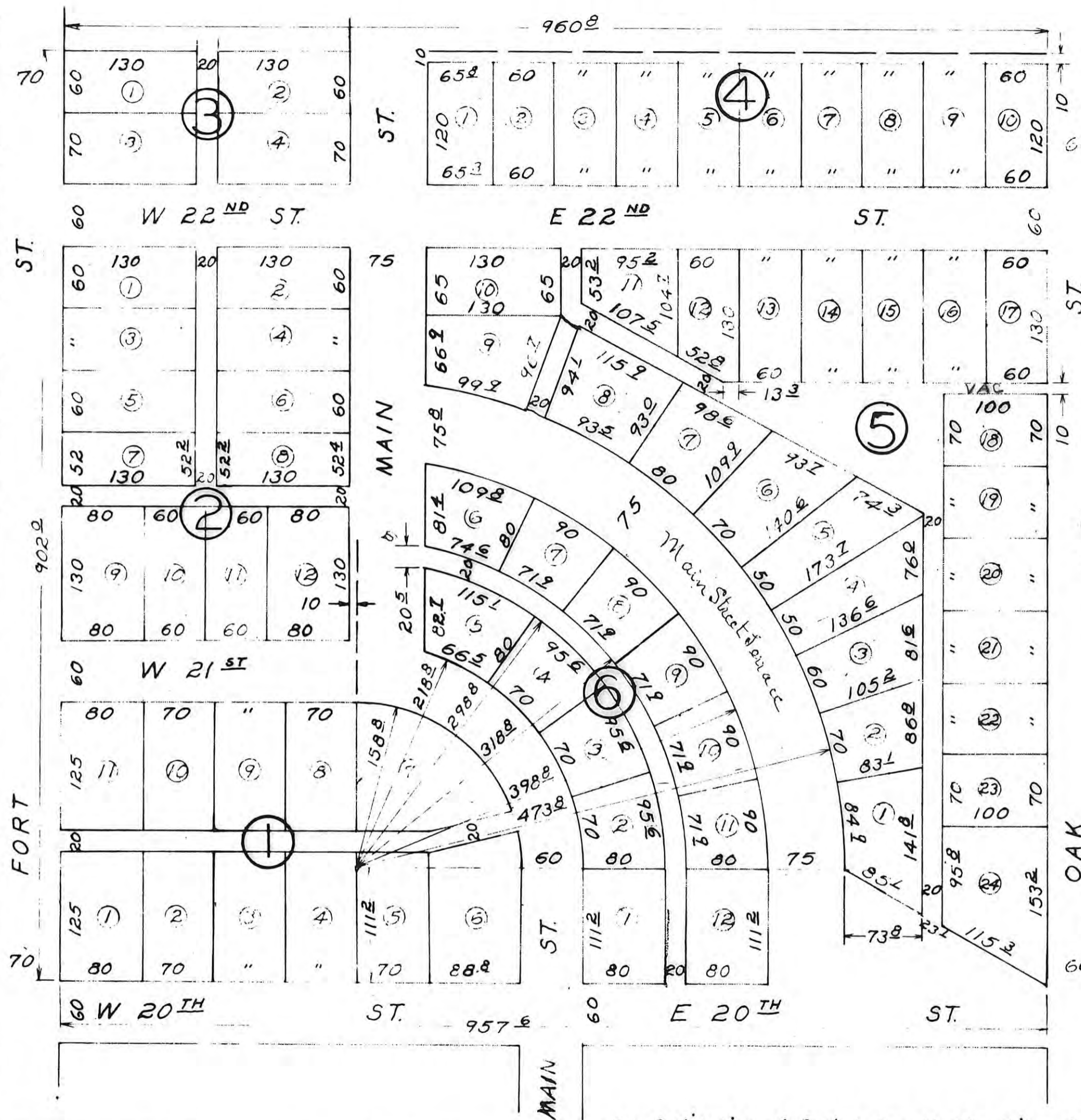
HAYS, KANSAS

ORIGINALLY BLOCK 49 L.A. & CO. ADD.

W 23RD

W 22ND

W 21ST



SCALE 1"=100'

SURVEYED SEPT. 5 1949
PLATTED JAN. 3 1950

SERVIS & VAN DOREN
CONSULTING ENGINEERS
HAYS, KANSAS

I certify this to be a correct
re-plat of the North Hills Sub-
Division of the city of Hays,
Kansas, as same was surveyed
and platted by me.

L. M. Van Doren

STATE OF KANSAS } SS
ELLIS COUNTY }
This instrument was filed for record

MAY 31 1951
4:00 o'clock P.M. recording
21 of Plat. Page 6
All in Name
Registrar of Deeds

For Dedication of Replat see Bk 22 Misc Page 424

THIS IS A DIRECT PHOTOGRAPHIC REPRODUCTION OF THE OFFICIAL INSTRUMENT (RECORDED PLAT).

THIS REPRODUCTION WAS MADE BY BUCHER & WILLIS, CONSULTING ENGINEERS, PLANNERS & ARCHITECTS IN JUNE 1979

ORDINANCE NO. 2180

AN ORDINANCE VACATING THE ALLEY-WAY LOCATED AT TWENTY-SECOND AND OAK STREETS, RUNNING WESTERLY APPROXIMATELY 100 FEET, BOUNDED ON THE NORTH BY A PORTION OF LOT SIXTEEN (16) AND ALL OF LOT SEVENTEEN (17), IN BLOCK FIVE (5), AND ON THE SOUTH BY LOT EIGHTEEN (18), IN BLOCK FIVE (5), OF NORTH HILLS ADDITION TO THE CITY OF HAYS, KANSAS.

Book: 269 Pg: 3

ORDINANCE NO. 2222
AN ORDINANCE VACATING A PORTION OF A PUBLIC UTILITY EASEMENT LOCATED IN BLOCK SIX (6) OF NORTH HILLS ADDITION TO THE CITY OF HAYS, KANSAS.

WHEREAS, the Governing Body of the City of Hays, Kansas, finds it necessary and expedient that a portion of the utility easement located in Block Six (6) of North Hills Addition to the City of Hays, described as follows, to-wit:

An existing easement for utilities in Block Six (6) of North Hills Addition to the City of Hays in Ellis County, Kansas, more particularly described as beginning at the Southwest corner of Lot 12 in said Lot 6, thence North on the West line of said Lot 12, a distance of 111.2 feet, thence on the West line of Lot 11 on a curve to the left with a radius of 214.8 feet to the Southwest corner of Lot 10, thence on the West line of Lot 10 a distance of 55.52 feet to a point, thence on a line with a bearing of South 69°50'51" West a distance of 20.08 feet to a point on the easterly line of Lot 2, thence on a curve to the right, with a radius of 214.8 feet, a radial distance of 54.34 feet to the Northeast corner of Lot 1, thence South on the East line of Lot 1 a distance of 111.2 feet, thence East a distance of 20.08 feet to the point of beginning.

be vacated:

WHEREAS, K.S.A. 12-504, authorizes the vacation of lands by the City Governing Body under certain conditions, which have been met;

NOW, THEREFORE, BE IT ORDAINED BY THE GOVERNING BODY OF THE CITY OF HAYS, KANSAS:

Section 1. That a portion of the utility easement located in Block Six (6) of North Hills Addition to the City of Hays, described as follows, to-wit:

An existing easement for utilities in Block Six (6) of North Hills Addition to the City of Hays in Ellis County, Kansas, more particularly described as beginning at the Southwest corner of Lot 12 in said Lot 6, thence North on the West line of said Lot 12, a distance of 111.2 feet, thence on the West line of Lot 11 on a curve to the left with a radius of 214.8 feet to the Southwest corner of Lot 10, thence on the West line of Lot 10 a distance of 55.52 feet to a point, thence on a line with a bearing of South 69°50'51" West a distance of 20.08 feet to a point on the easterly line of Lot 2, thence on a curve to the right, with a radius of 214.8 feet, a radial distance of 54.34 feet to

ORDINANCE NO. 3723
Page 2
The Northeast corner of Lot 1, thence South on the East line of Lot 1 a distance of 111.2 feet, thence East a distance of 20.08 feet to the point of beginning.

be and the same is hereby vacated.

Section 2. This ordinance shall be effective upon publication in The Hays Daily News, the official city newspaper.

PASSED AND ADOPTED this 12th day of April, 2007.

ATTEST:
MARK LOUGHRAN
City Clerk

