

LOCATION MAP

SCALE 1" = 200'



SCALE 1" = 50'

**SIXTH
NORTHEAST ADDITION**
TO
THE CITY OF HAYS, KANSAS

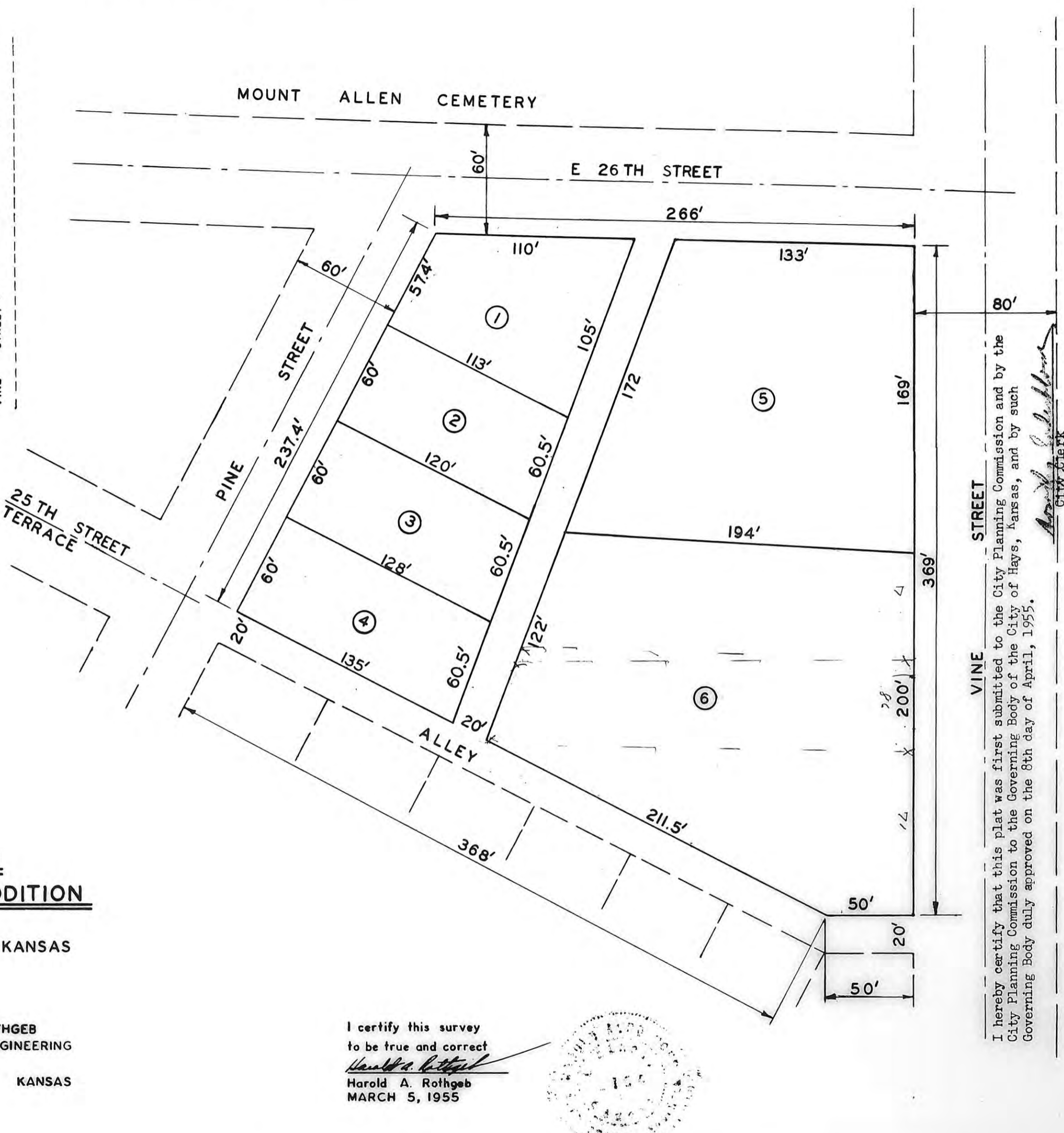
STATE OF KANSAS,
ELLIS COUNTY,
This instrument was filed for record

APR 12 1955

7:45 o'clock
of Plat Page 34
Fees \$0.00
60th
M recorded in
Register of Deeds

HAROLD A. ROTHGEB
ARCHITECTURAL & ENGINEERING
SERVICE
HAYS, KANSAS

I certify this survey
to be true and correct
Harold A. Rothgeb
Harold A. Rothgeb
MARCH 5, 1955



I hereby certify that this plat was first submitted to the City Planning Commission and by the City Planning Commission to the Governing Body of the City of Hays, Kansas, and by such Governing Body duly approved on the 8th day of April, 1955.
Ann S. Colburn
CITY CLERK

THIS IS A DIRECT PHOTOGRAPHIC REPRODUCTION OF THE OFFICIAL INSTRUMENT (RECORDED PLAT).
THIS REPRODUCTION WAS MADE BY BUCHER & WILLIS, CONSULTING ENGINEERS, PLANNERS &
ARCHITECTS IN JUNE 1979