

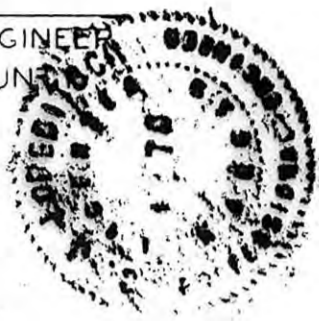
NORTHRIDGE SECOND ADDITION

TO THE CITY OF HAYS, KANSAS

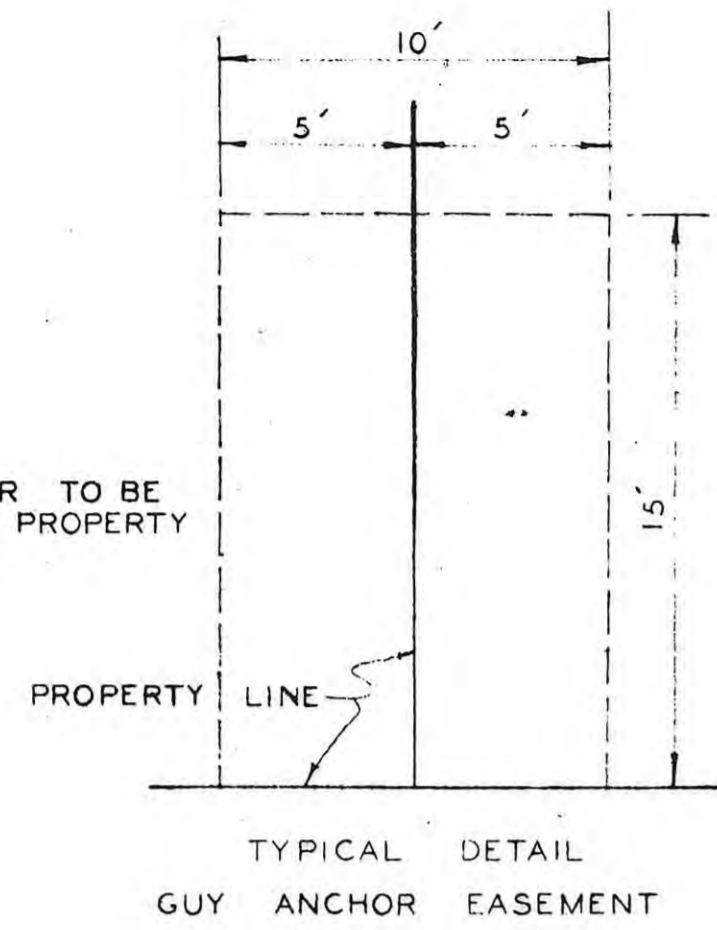
COUNTY ENGINEER'S CERTIFICATE

I THE UNDERSIGNED, C.J. LOREDITSCH, ELLIS COUNTY ENGINEER AND A LICENSED PROFESSIONAL ENGINEER, DO HEREBY APPOINT JOHN W. SMITH DEPUTY COUNTY ENGINEER FOR THE PURPOSE OF SURVEYING AND PLATTING NORTHRIDGE SECOND ADDITION TO THE CITY OF HAYS KANSAS. SIGNED THIS 12 DAY OF MARCH, 1959

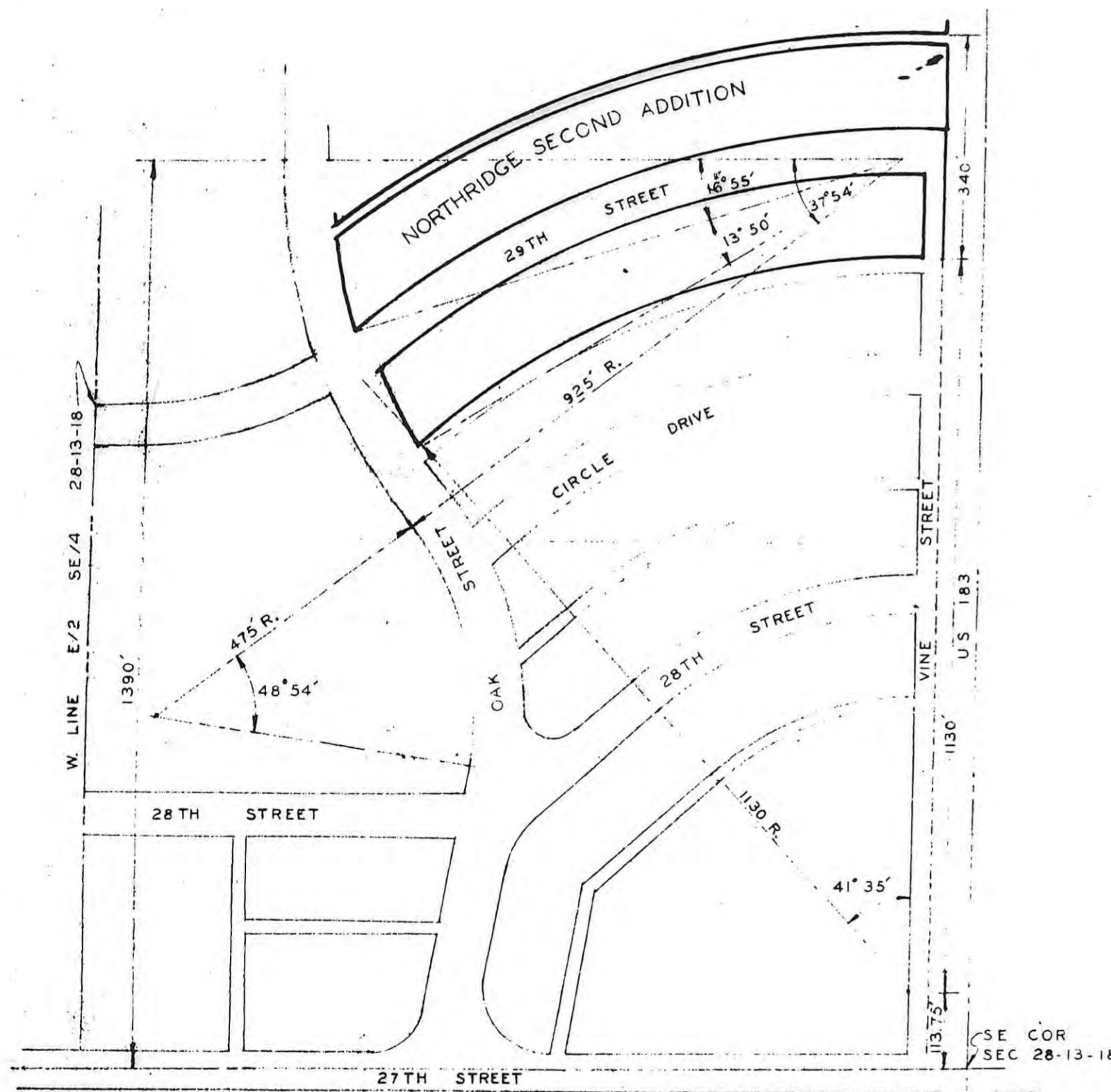
C. J. LOREDITSCH COUNTY ENGINEER
ELLIS COUNTY



NOTE:
GUY ANCHOR TO BE PLACED ON PROPERTY LINE



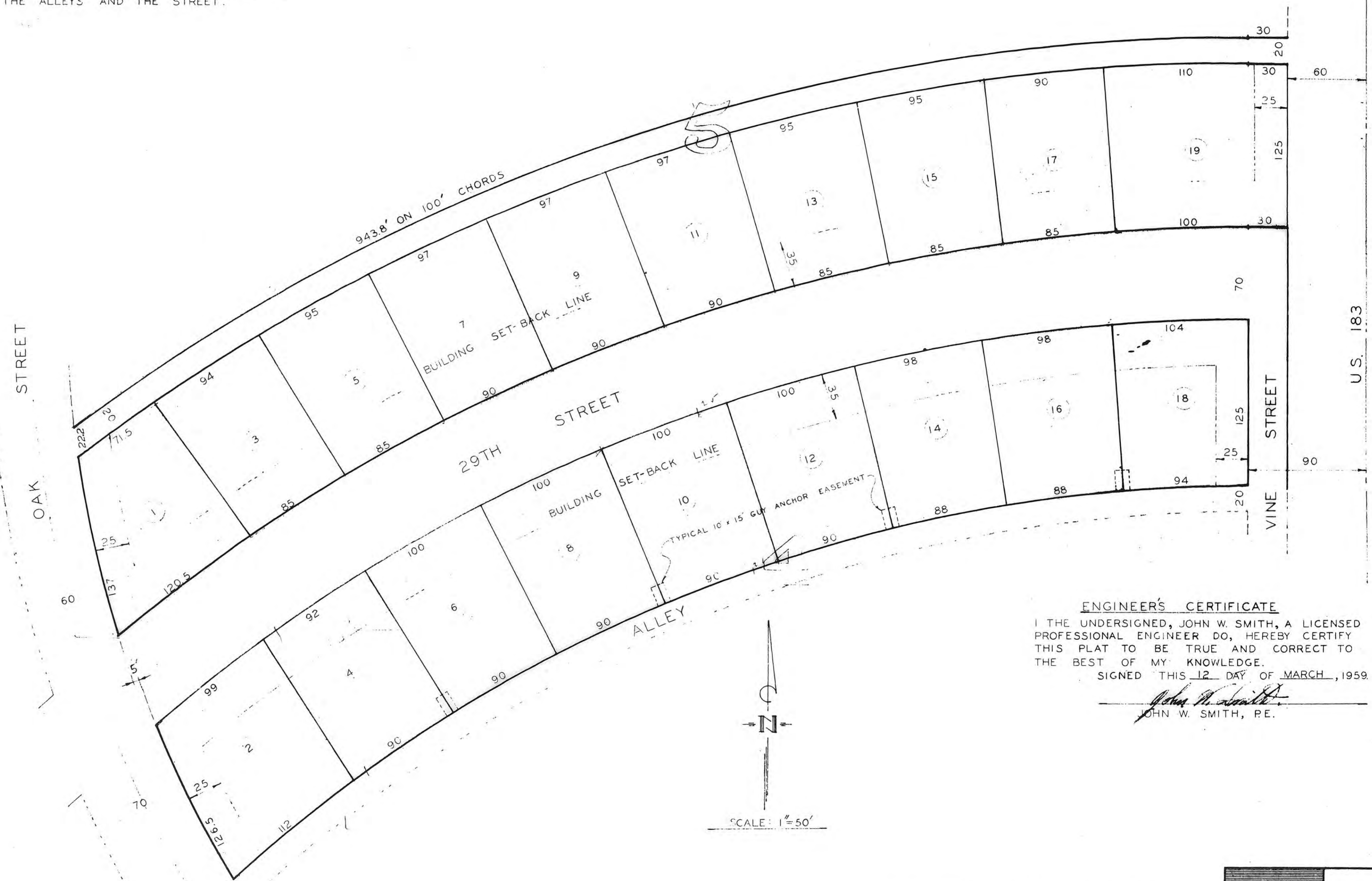
NOTE:
DIMENSIONS SHOWN ON CURVED LOT LINES ARE CHORD DISTANCES.
ALL RIGHT ANGLE DISTANCES FROM STREET TO ALLEYS ARE 125'.
NORTHERLY - SOUTHERLY LOT LINES ARE NOT NECESSARILY AT RIGHT ANGLES TO THE ALLEYS AND THE STREET.



STATE OF KANSAS
ELLIS COUNTY
This instrument was filed for record
MAR 16 1959
2:00 P.M. recorded in
2-0-1959
Fees \$ 2.00
Register of Deeds

THIS IS A DIRECT PHOTOGRAPHIC REPRODUCTION OF THE OFFICIAL INSTRUMENT (RECORDED PLAT).

THIS REPRODUCTION WAS MADE BY BUCHER & WILLIS, CONSULTING ENGINEERS, PLANNERS & ARCHITECTS IN JUNE 1979



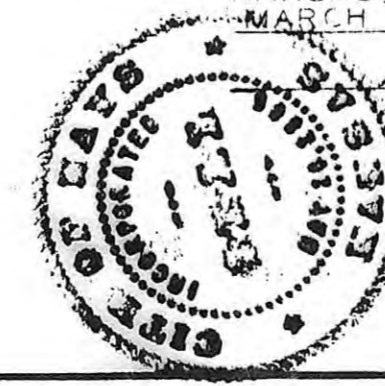
ENGINEER'S CERTIFICATE
I THE UNDERSIGNED, JOHN W. SMITH, A LICENSED PROFESSIONAL ENGINEER DO, HEREBY CERTIFY THIS PLAT TO BE TRUE AND CORRECT TO THE BEST OF MY KNOWLEDGE.
SIGNED THIS 12 DAY OF MARCH, 1959

John W. Smith
JOHN W. SMITH, P.E.



I HEREBY CERTIFY THAT THIS PLAT WAS FIRST SUBMITTED TO THE CITY PLANNING COMMISSION AND BY THE CITY PLANNING COMMISSION TO THE GOVERNING BODY OF THE CITY OF HAYS, KANSAS, AND BY SUCH GOVERNING BODY DULY APPROVED ON MARCH 12, 1959.

DOROTHY SODERBLOM
CITY CLERK



DRAWN BY		JOHN W. SMITH	
CHECKED BY		ENGINEERS & ARCHITECTS	
DATE	JOB NO.	HAYS, KANSAS	
MAR 59	204 - 59		
NORTHRIDGE SECOND ADDITION		SHEET 1 OF 1	