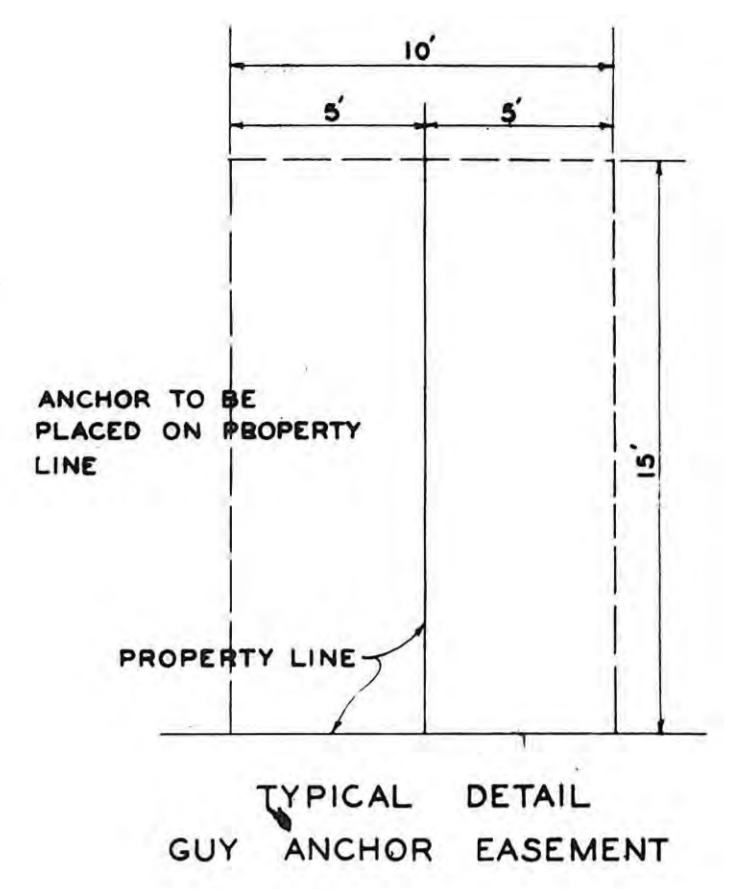


# NORTHRIDGE THIRD ADDITION

THIS IS A DIRECT PHOTOGRAPHIC REPRODUCTION OF THE OFFICIAL INSTRUMENT (RECORDED PLAT).  
 THIS REPRODUCTION WAS MADE BY BUCHER & WILLIS CONSULTING ENGINEERS, PLANNERS & ARCHITECTS IN JUNE 1979

TO THE CITY OF HAYS, KANSAS

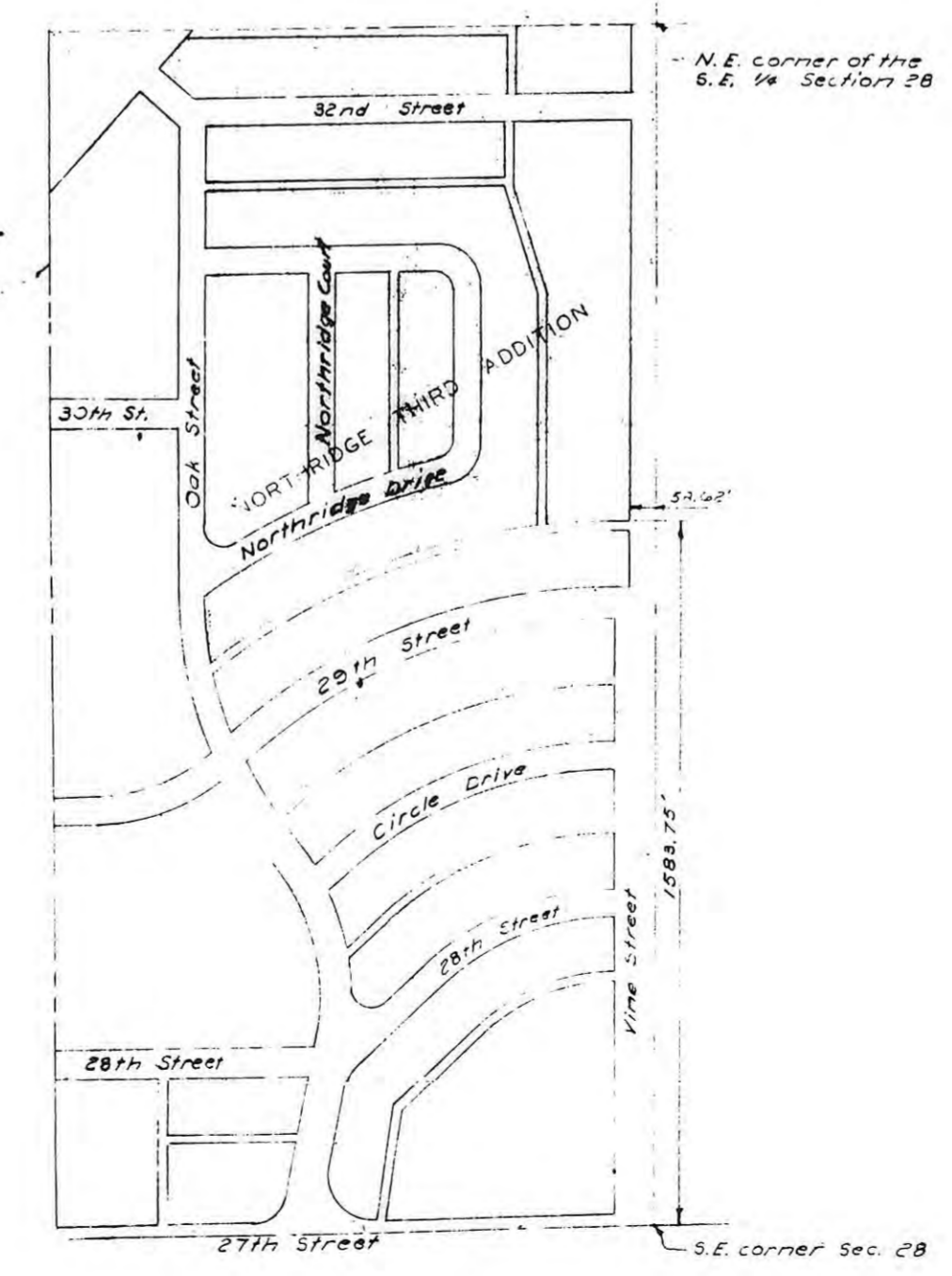
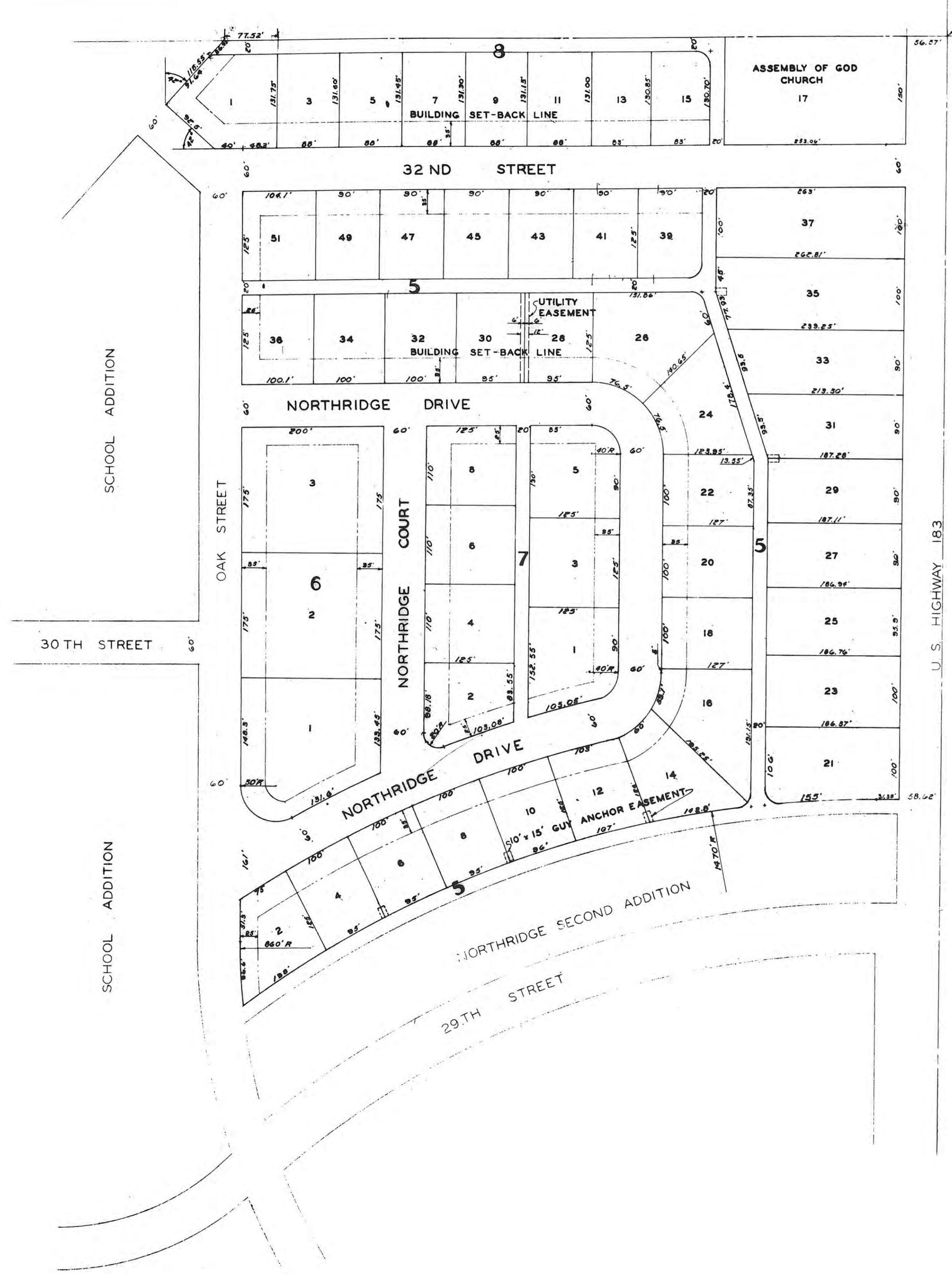


### LEGAL DESCRIPTION

A TRACT OF LAND IN THE S.E. 1/4 OF SECTION 28, TOWNSHIP 13 SOUTH, RANGE 18 WEST OF THE 6TH PRINCIPAL MERIDIAN, ELLIS COUNTY, KANSAS, AND FURTHER DESCRIBED AS FOLLOWS;  
 BEGINNING AT A POINT WHICH IS 1583.75 FEET NORTH AND 58.82 FEET WEST OF THE SOUTH EAST CORNER OF SECTION 28, T13S, R18W OF THE 6TH P.M.; THENCE WEST AT RIGHT ANGLE 31.38 FEET THENCE; WESTERLY ALONG THE NORTH SIDE OF AN ALLEY IN NORTHRIDGE SECOND ADDITION, ON A CURVE OF 1470 FOOT RADIUS, 943.8 FEET, AS MEASURED ON 100 FOOT CHORD STATIONS (EXCEPT THE LAST CHORD DISTANCE), TO THE EAST LINE OF OAK STREET; THENCE NORTHERLY ALONG THE EAST LINE OF OAK STREET ON A CURVE OF 860 FOOT RADIUS, 96.8 FEET; THENCE NORTH CONTINUING ALONG THE EAST LINE OF OAK STREET 100.8 FEET; THENCE WEST 40 FEET; THENCE WEST 42 DEGREES NORTH, 92.5 FEET; THENCE NORTH 42 DEGREES EAST 118.55 FEET; THENCE EAST 958.95 FEET TO THE WEST LINE OF U.S. HIGHWAY 183; THENCE SOUTH ALONG THE WEST LINE OF U.S. HIGHWAY 183, 1085.9 FEET TO THE POINT OF BEGINNING.

### NOTES

DIMENSIONS SHOWN ON CURVED LOTS ARE CHORD DISTANCES AND ARE NOT ARC DISTANCES.  
 ALLEY RETURNS INDICATED AS CURVED HAVE A RADIUS OF 20 FEET.  
 LOTS 21, 23, 25, 27, 29, 31, 33, 35 AND 37 OF BLOCK 5 AND LOT 17 OF BLOCK 8 ARE COMMERCIAL AREA.



### ENGINEER'S CERTIFICATE

I, THE UNDERSIGNED, JOHN W. SMITH, A LICENSED PROFESSIONAL ENGINEER, DO HEREBY CERTIFY THIS PLAT TO BE TRUE AND CORRECT TO THE BEST OF MY KNOWLEDGE.

SIGNED THIS 25 DAY OF February, 1960

*John W. Smith*  
 JOHN W. SMITH, P.E.



I HEREBY CERTIFY THAT THIS PLAT WAS FIRST SUBMITTED TO THE CITY PLANNING COMMISSION AND BY THE CITY PLANNING COMMISSION TO THE GOVERNING BODY OF THE CITY OF HAYS, KANSAS, AND BY SUCH GOVERNING BODY APPROVED ON February 15, 1960.

*Dorothy Soderblom*  
 DOROTHY SODERBLOM  
 CITY CLERK



STATE OF KANSAS }  
 ELLIS COUNTY }  
 This instrument was filed for record  
 MAR 29 1960  
 11:30 a.m. clock  
 Plat Book No. 121-122-123-124  
 Fees \$ 2.00  
 \$ 5.30 Total  
 \$ 7.30

DRAWN BY D. J. B.		JOHN W. SMITH CONSULTING ENGINEER AND ASSOCIATES	
CHECKED BY J. W. S.		HAYS KANSAS	
DATE FEB-60	JOB NO. 205-60	NORTHRIDGE THIRD ADDITION	
HAYS - KANSAS		SHEET 1 OF 1	