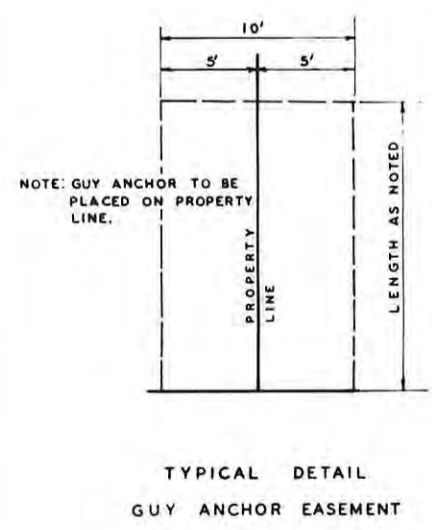
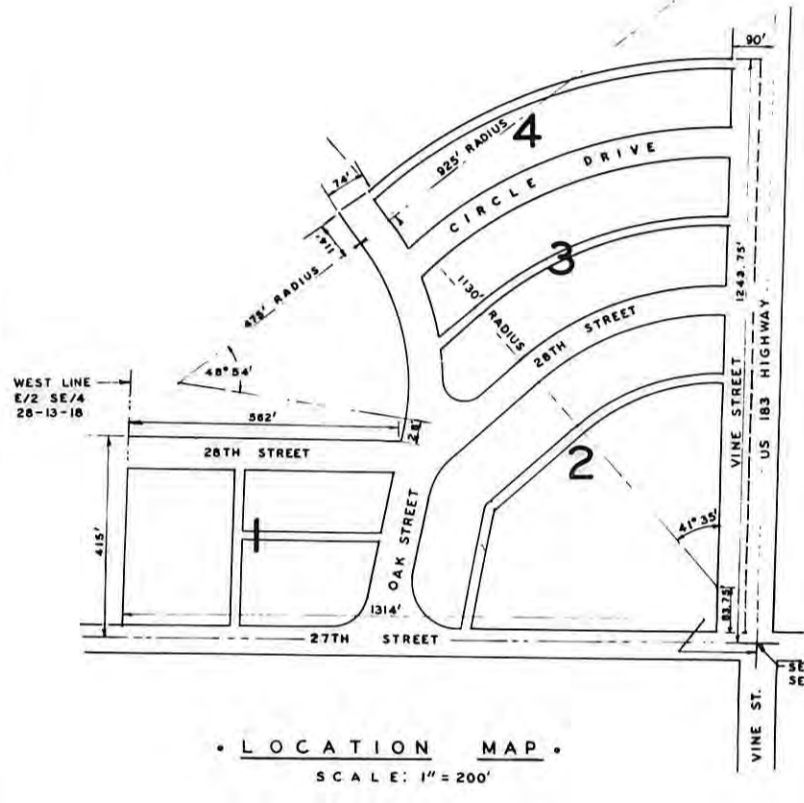


NORTHRIDGE ADDITION to THE CITY OF HAYS, KANSAS

For Report of Plat
See Page 59

NOTE: DIMENSIONS SHOWN ON CURVED LOT
LINES ARE CHORD DISTANCES AND ARE
NOT ARC DISTANCES.



I hereby certify that this plat was approved by the Governing Body of the City of Hays the 10th day of December, 1956.

Handwritten signature
City Clerk

APPROVED:
P.F. Felten
P.F. FELTEN, CHAIRMAN
HAYS CITY PLANNING COMMISSION



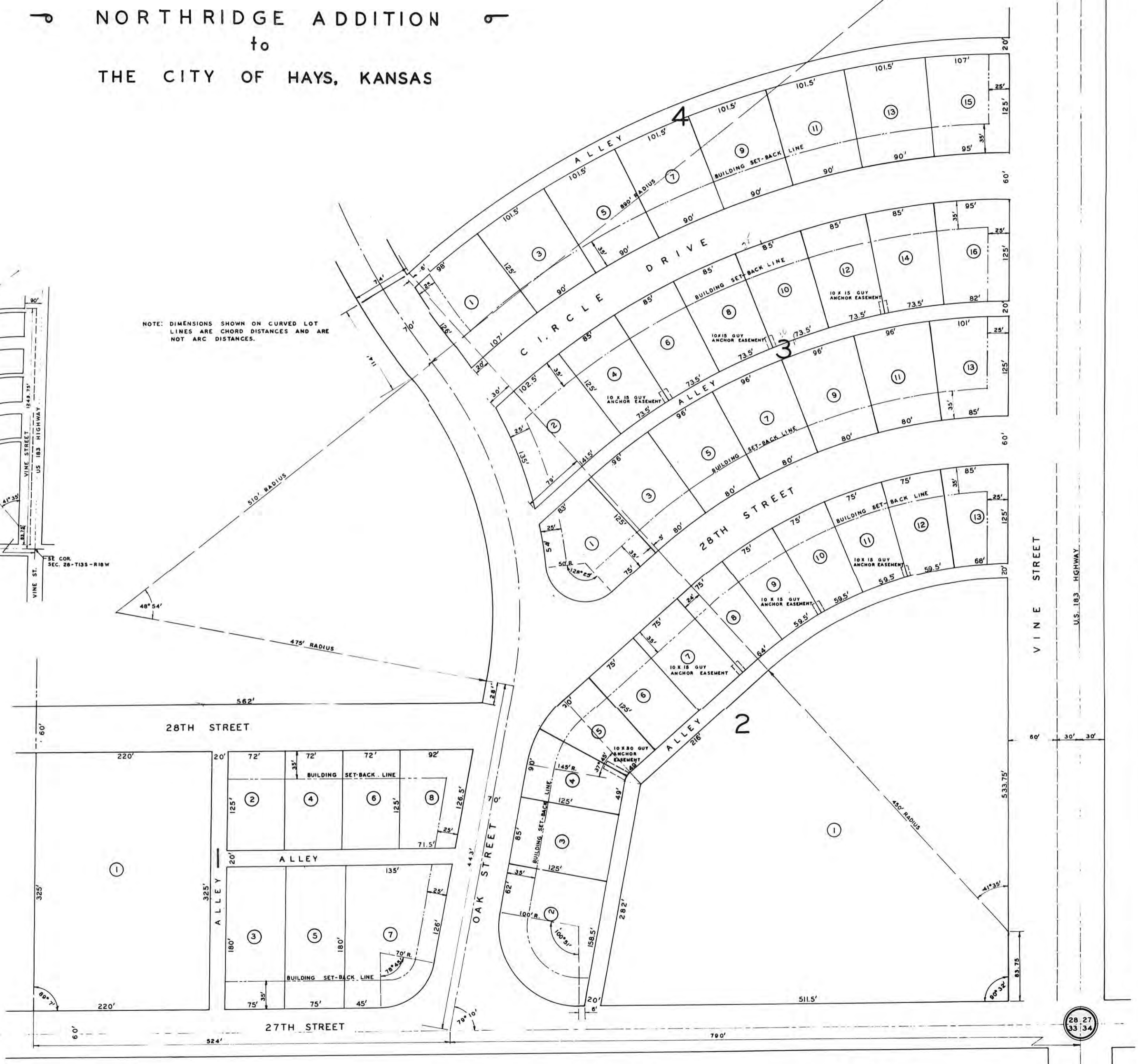
I CERTIFY THIS SURVEY TO BE CORRECT.
Handwritten signature
HAROLD A. ROTHGEB
PROFESSIONAL ENGINEER
NOVEMBER 17, 1956

HAROLD A. ROTHGEB
ARCHITECTURAL & ENGINEERING
HAYS SERVICE KANSAS

STATE OF KANSAS
ELLIS COUNTY
This instrument was filed for record
DEC 13 1956
1130
J. L. ...
740

For dedication
See plat 158 page 686

THIS IS A HALF-SIZE PHOTOGRAPHIC REPRODUCTION OF THE OFFICIAL INSTRUMENT (RECORDED PLAT).
THIS REPRODUCTION WAS MADE BY BUCHER & WILLIS, CONSULTING ENGINEERS, PLANNERS & ARCHITECTS IN JUNE 1979



28 27
33 34