

REPLAT OF BLOCK ONE
NORTHRIDGE ADDITION TO
THE CITY OF HAYS, KANSAS

THIS IS A DIRECT PHOTOGRAPHIC REPRODUCTION OF THE
OFFICIAL INSTRUMENT (RECORDED PLAT).

THIS REPRODUCTION WAS MADE BY BUCHER & WILLIS,
CONSULTING ENGINEERS, PLANNERS & ARCHITECTS IN
JUNE 1979

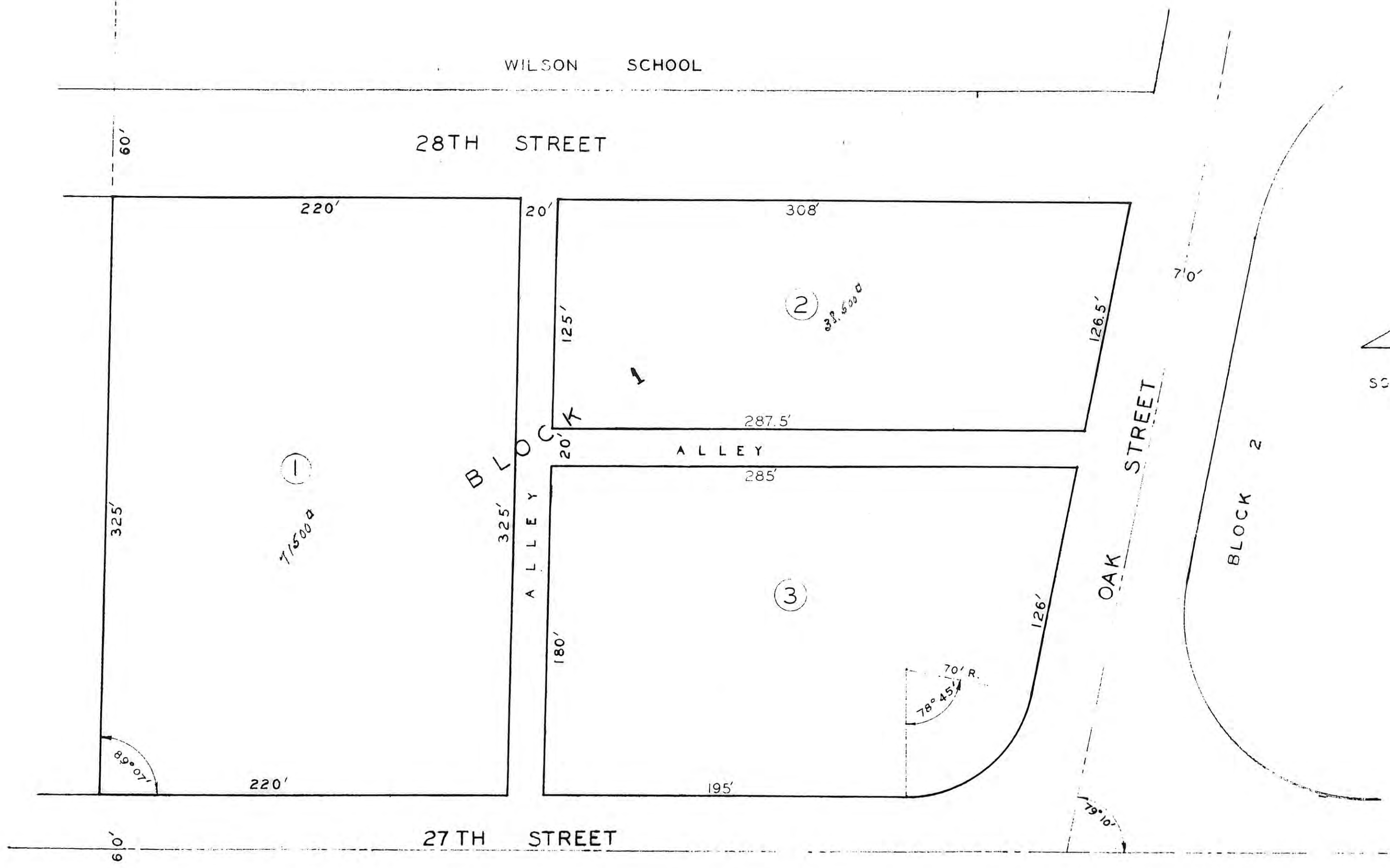
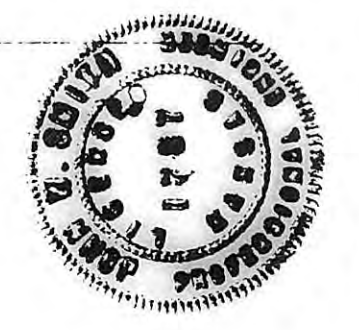
LEGAL DESCRIPTION

A TRACT OF LAND IN THE S.E. 1/4
QF SECTION 28, T13S, R18W OF THE
6TH P.M.
SAID TRACT BEING ALL OF BLOCK ONE
NORTHRIDGE ADDITION TO THE CITY OF
HAYS, KANSAS.

ENGINEER'S CERTIFICATE

I, JOHN W. SMITH, A LICENSED PROFESSIONAL
ENGINEER, DO HEREBY CERTIFY THIS PLAT
TO BE TRUE AND CORRECT TO THE BEST
OF MY KNOWLEDGE.

John W. Smith
JOHN W. SMITH, P.E.
16 JANUARY 1959



HEREBY CERTIFY THIS PLAT WAS FIRST SUBMITTED TO
THE CITY PLANNING COMMISSION AND BY THIS COMMISSION
THE GOVERNING BODY OF THE CITY OF HAYS, KANSAS,
AND WAS APPROVED BY SAID GOVERNING BODY ON MARCH 12, 1959.

Dorothy Soderblom
DOROTHY SODERBLOM — CITY CLERK

STATE OF KANSAS }
ELLIS COUNTY }
This instrument was filed for record
MAR 16 1959
2.00 of 4 M recorded in
2.00 of 4 page 59
Fees: 2.00 Register of Deeds

JOHN W. SMITH
CONSULTING ENGINEER & ASSOCIATES
HAYS KANSAS