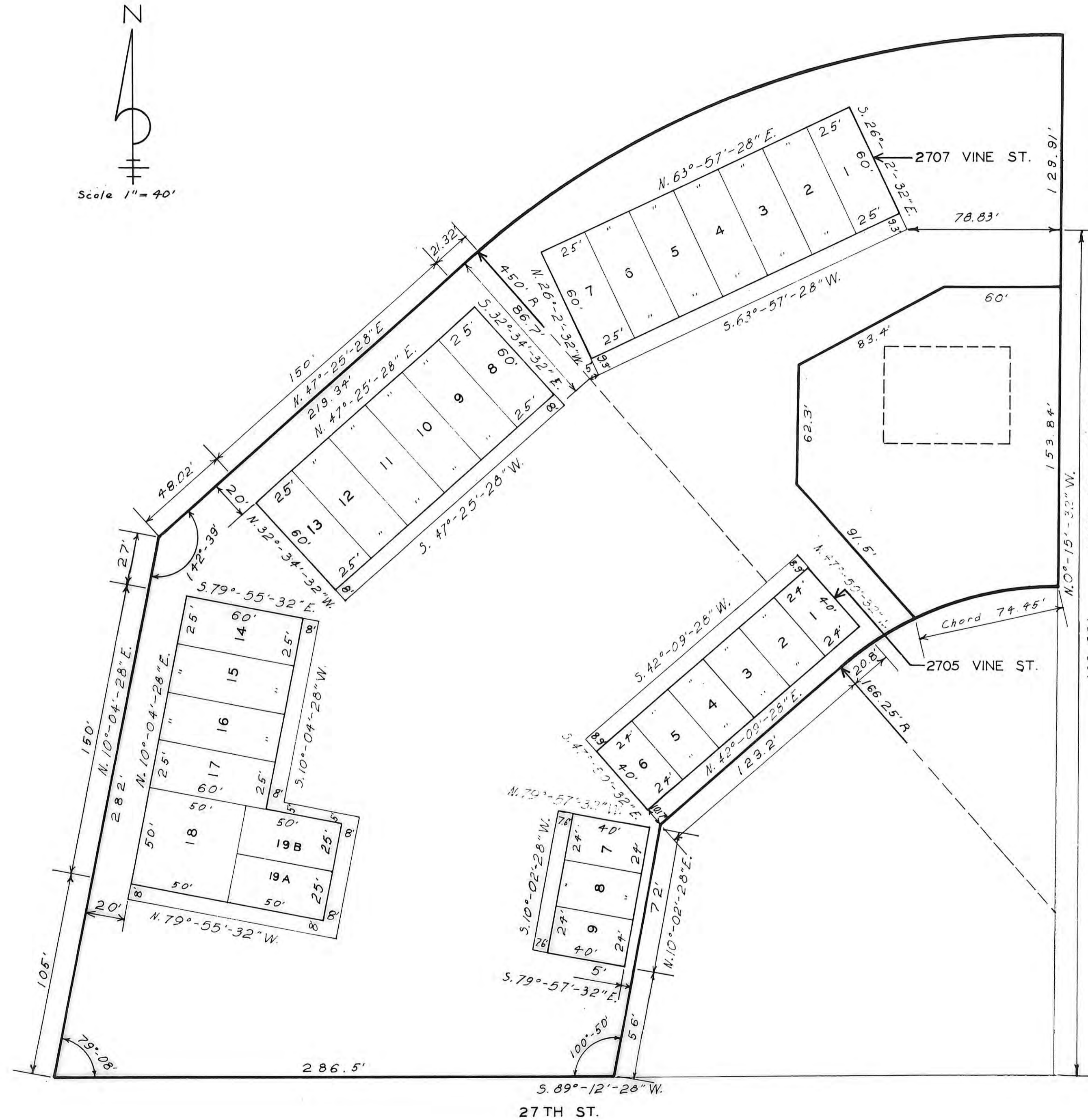
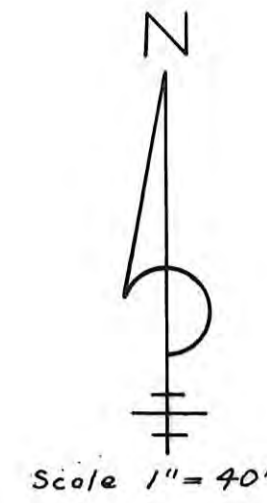


THIS IS A DIRECT PHOTOGRAPHIC REPRODUCTION OF THE OFFICIAL INSTRUMENT (RECORDED PLAT).

THIS REPRODUCTION WAS MADE BY BUCHER & WILLIS CONSULTING ENGINEERS, PLANNERS & ARCHITECTS IN AUGUST, 1979.



DESCRIPTION:

All of Lot 1, Block 2, Northridge Addition to the City of Hays, Kansas except the following two (2) tracts.

Tract No. 1:

A tract of land in Lot 1, Block 2, Northridge Addition to the City of Hays, Kansas, described as follows:

Beginning at the Southwest corner of Lot 1, Block 2, Northridge Addition to the City of Hays, Kansas; thence North along the East line of said Lot 1, a distance of 250 feet; thence Southwesterly on a curve of 166.55 foot radius, with an included angle of 41 degrees 35 minutes for a curve distance of 120.6 feet; thence Southwesterly on a tangent to the curve of the last named course, a distance of 125 feet; thence Southwesterly, a distance of 124 feet to intersect the South line of said Lot 1 at an angle of 79 degrees 10 minutes; thence East along the South line of said Lot 1, a distance of 225 feet to the point of beginning.

Tract No. 2:

A tract of land in Lot 1, Block 2, Northridge Addition to the City of Hays, Kansas, and further described as follows:

Beginning at a point on the East line of Lot 1, a distance of 250 feet North of the Southeast corner of Lot 1; thence North along the East line of Lot 1, a distance of 153.84 feet; thence West perpendicular to the East line of Lot 1, a distance of 60 feet; thence Southwesterly with a deflection angle of 28 degrees 25 minutes, a distance of 83.4 feet; thence South parallel to the East line of Lot 1, a distance of 62.3 feet; thence Southeasterly with a deflection angle of 41 degrees 47 minutes, a distance of 91.5 feet; thence Easterly along a curve with a radius of 166.25 feet, a chord distance of 74.45 feet to the point of beginning.

STATEMENTS:

1. Maximum number of units in Northridge Plaza is 29.
2. All area not shown and numbered as units is common area to all units.
3. There is no "Convertible Land" remaining in this area known as Northridge Plaza.

THE "UNIT PROJECT FACTOR" FOR THE PLAT SHALL BE:

Unit No.	Square Feet in Units	Unit Project Factor	Project Ratio
2707 Vine St.			
Units 1 to 17, incl.	1,500	1500	3.8324%
Unit 18	2,500	2500	6.3875%
Unit 19A & 19B	1,250	1250	3.1937%
2705 Vine St.			
Units 1 to 9, incl.	960	960	2.4527%

SURVEYOR'S CERTIFICATE:

I, a licensed professional engineer and licensed land surveyor, do hereby certify this plat and all data contained herein to be true and correct to the best of my knowledge.

Signed this 3 day of June, A.D., 1976.

John W. Smith
John W. Smith, P. E. & L. S.

STATE OF KANSAS }
ELLIS COUNTY }
This instrument was filed for record
JUL 6 1976
1:30 o'clock P.M. recorded in
of Hays, Kansas
Fees \$700 Register of Deeds

Declaration
Sub Chk 278 page 184

DESIGNED BY J W S	JOHN W. SMITH CONSULTING ENGINEER AND ASSOCIATES HAYS KANSAS
DRAWN BY	
CHECKED BY J W S	
DATE JAN. 76	JOB NO. 76-200
NORDIC PLAT	
HAYS KANSAS	

SHEET
OF 1