

Town Site

# OGALLALA

1/4 Sec 23 T 12 S R 22 W.

TREGO. COUNTY KANSAS

Witness my hand State of Kansas }  
at this 18th day of 1879 Ellis County }

F. W. Gunter This instrument was filed for record  
By C. C. Eden Register On the 18th day of 1879 a copy of which is being  
deposited of hereby certify that this foregoing  
is a true and correct copy of the Original  
now on file in my office.

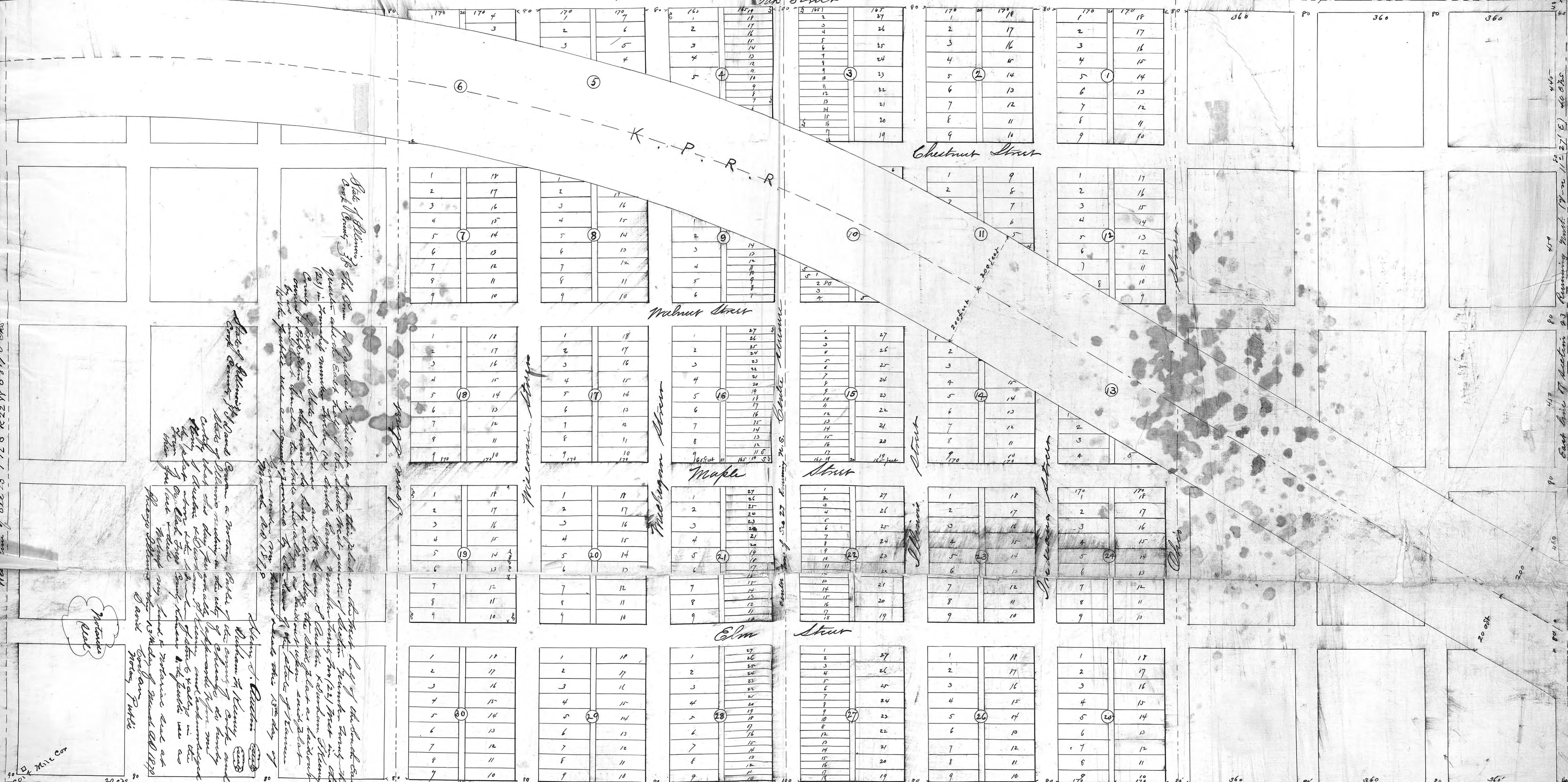
Govt Half mile Cor  
802 cor  
1/4 mile or 1996 chs

Center line of Sec 23 T 12 S R 22 W  
1/4 mile or 1996 chs

Scale & chains = 132 feet - 1 inch

1/4 mile or 1996 chs  
East & West (N 11° 24' E)

1/4 mile or 1996 chs East (N 71° 11' 20" E)



Line of Sec 23 T 12 S R 22 W 1387.90 chs

East line of Section 23 Running North 71° 11' 20" East 1996 chs

South line of Sec 23 T 12 S R 22 W Running East & West (N 11° 24' E)

1/4 mile or 2006 chs

2006 chs

Govt  
1/4 mile Cor  
1000 chs

I certify the above plat to be drawn strictly  
in accordance with my surveys as made in the field

Thomas K. Peck

Deputy Surveyor Ellis County

Government  
1000 chs  
Cor.

Govt  
1/4 mile Cor  
802 cor

1/4 mile

1/4 mile

1/4 mile

1/4 mile