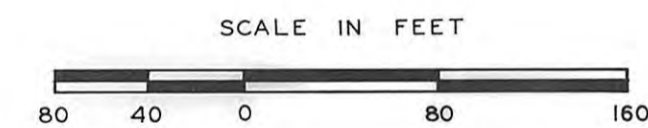
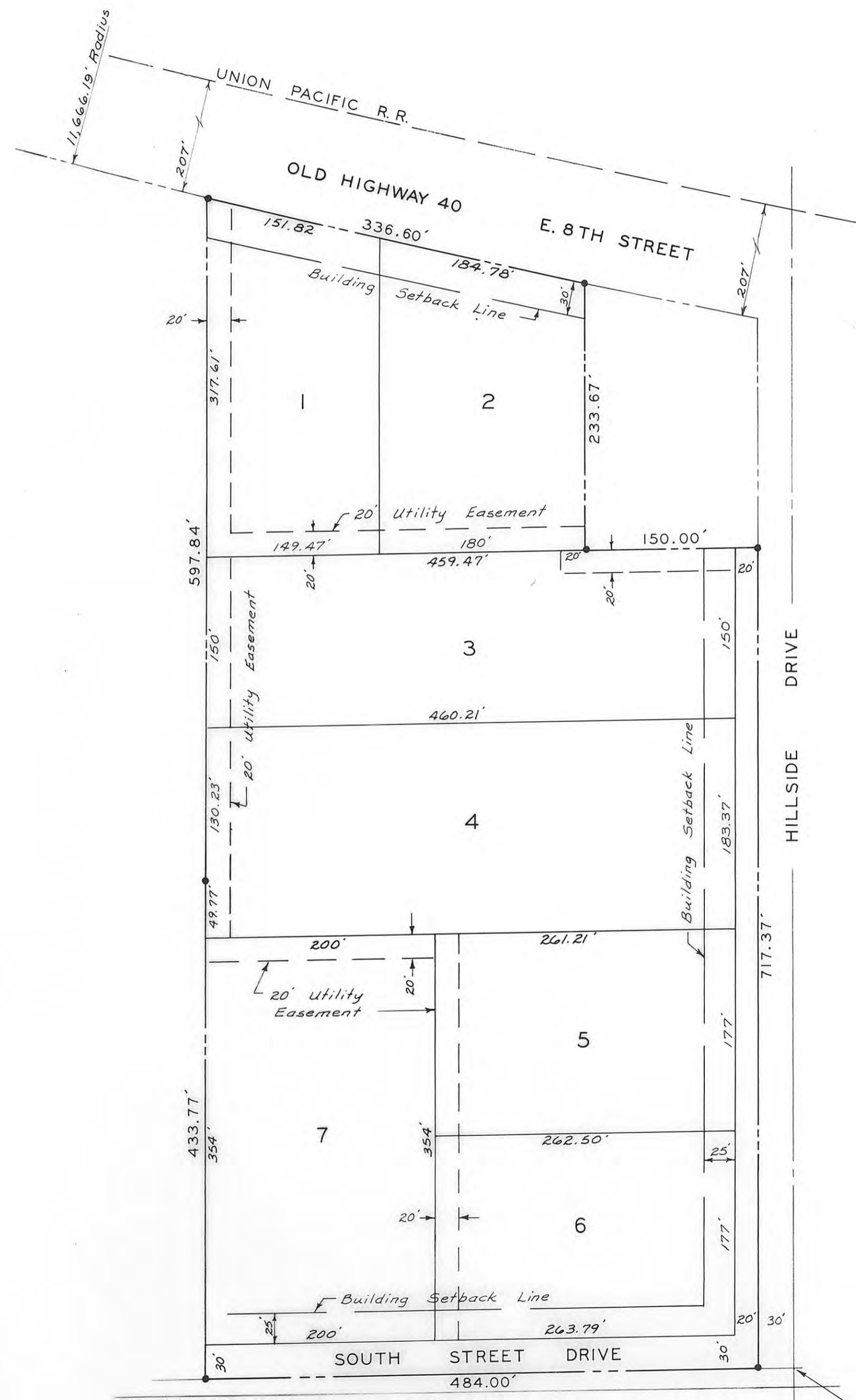


OLD 40 INDUSTRIAL PARK

ELLIS COUNTY, KANSAS



• - 1/2" Rebar Set

S. E. Corner
Sec. 3, T14S, R18W
Original Stone Found
As Per County Record

LEGAL DESCRIPTION:
A tract of land in the Southeast one-quarter of Section 3, Township 14 South, Range 18 West, of the Sixth Principal Meridian Ellis County, Kansas described as follows:
Beginning at a point on the South line of Section 3, a distance of 30 feet West of the Southeast corner of Section 3; thence, West along the South line of section 3, a distance of 484.00 feet; thence, North a distance of 433.77 feet to a point 510.85 feet West of the East line of Section 3; thence, North a distance of 597.84 feet to a point 507.90 feet West of the East line of Section 3; thence, Southeasterly along the South right-of-way line of Highway 40 a chord distance of 336.60 feet; thence, South parallel to the East line of Section 3, a distance of 233.67 feet; thence, East parallel to the South line of Section 3, a distance of 150.00 feet; thence, South parallel to the East line of Section 3, a distance of 717.37 feet to the point of beginning.

STREETS, ALLEYS, AND EASEMENTS:
Streets, alleys, and easements shown on this plat and not heretofore dedicated for public and private use are hereby dedicated for public and private use and may be employed for the purpose of installing, repairing, and maintaining all public and private utilities now or hereafter.

OWNER'S CERTIFICATE:
State of Kansas, County of Ellis, ss
This is to certify that the undersigned are the owners of the land described in the plat, and that they have caused the same to be surveyed and subdivided as indicated thereon, for the uses and purposes therein set forth, and do hereby acknowledge and adopt the same under the style and title thereon indicated.

All street right-of-way as shown on this plat are hereby dedicated to the public. An easement or license to the public to locate, construct and maintain or authorize the location, construction and maintenance of poles, wires, conduits, water, gas, and sewer pipes or required drainage channels or structures upon the area marked for easements on this plat is hereby granted.

Given under our hands at Hays, Kansas this 6 day of May, 1983.
Ivan Gottschalk
Ivan Gottschalk
Wenita Gottschalk
Wenita Gottschalk
The Hays State Bank of Hays, Kansas By: *Jim Kronewitter*, Vice President.

NOTARY CERTIFICATE:
State of Kansas, County of Ellis, ss
I, a Notary Public in and for Ellis County, in the State of Kansas, do hereby certify that Ivan Gottschalk, Wenita Gottschalk, and Hays State Bank, Jim Kronewitter, Vice President, personally known to me to be the same persons whose names are subscribed to the foregoing instrument as such owners, appeared before me this day in person and acknowledged that they signed the plat at their own free and voluntary act for the use and purpose herein set forth.

Given under my hand and Notarial Seal this 6 day of May, 1983.
My commission expires 10/4/86
Tanya D. Schumacher
Notary Public

ENGINEER'S CERTIFICATE:
I, a licensed professional engineer in the State of Kansas, do hereby certify this plat to be true and correct to the best of my knowledge.
Harold H. Munger, II, P.E.

APPROVALS:
This plat of Old 40 Industrial Park has been submitted to and approved by the Planning Commission this 13 day of April, 1983.

P. John Jones
Secretary
Robert Nicholas
Chairman

The dedications shown on this plat accepted by the City Commission of the City of Hays, Kansas, this 12th day of May, 1983.

Daniel G. Rupp
Mayor
Arvid Schellen
City Clerk

The dedications shown on this plat are accepted by the County Commission of Ellis County, Kansas this 16th day of May, 1983.

Elis E. Dulach
Harold H. Kraw
Orlando Wasinger
ATTEST: *Emerald Rene*
County Clerk

The above and foregoing plat is hereby approved by the County Attorney of Ellis County, Kansas this 17th day of May, 1983.
Robert E. Duff
County Attorney

State of Kansas, County of Ellis, ss
This is to certify that this instrument was filed for record in the Register of Deeds Office on the 25 day of May, 1983, in Plat's Cabinet, No. 305.

Virginia Steyer
Register of Deeds
Rose Ann Rupp
Deputy
Plat * Sedv. Sub 332 p 724
Revised - Sub 332 p 728

OLD 40 INDUSTRIAL PARK
ELLIS COUNTY, KANSAS

DESIGN:	DRAWN: VRR	DATE: APRIL 1983
		FILE: 83601
		SHEET: 1 OF 1

