

PROPOSED PARKLANE ADDITION

TO THE CITY OF VICTORIA, KANSAS

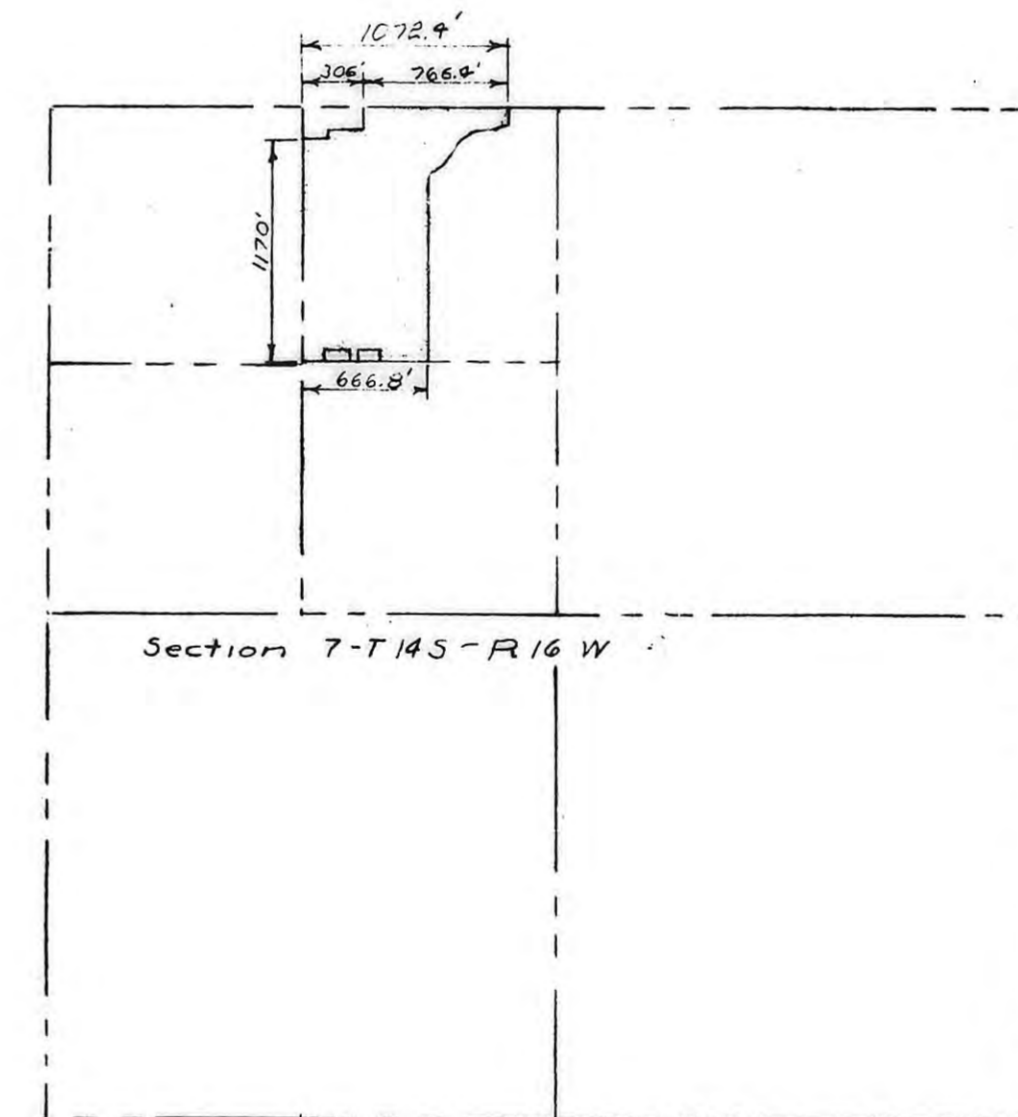
NW CORNER OF NE 1/4 OF NW 1/4 SCHOOL DIST NO. 10 OF SEC. 7-14-16

10TH STREET NORTH LINE SEC. 7-14-16 766.4'

LIGAL DESCRIPTION

A TRACT OF LAND IN SECTION SEVEN (7), TOWNSHIP FOURTEEN (14) SOUTH, RANGE SIXTEEN (16), WEST OF THE 6TH PRINCIPAL MERIDIAN, IN ELLIS COUNTY, KANSAS, DESCRIBED AS FOLLOWS:

BEGINNING AT A POINT ON THE NORTH LINE OF SAID SECTION, 306 FEET EAST OF THE NORTHWEST CORNER (NW/C) OF THE NORTHEAST QUARTER (NE/4) OF THE NORTHWEST QUARTER (NW/4) OF SAID SECTION; THENCE SOUTH, AT RIGHT ANGLES, 130 FEET; THENCE WEST, AND PARALLEL TO THE NORTH LINE OF SAID SECTION 7, 180 FEET; THENCE SOUTH, AT RIGHT ANGLES, 36 FEET; THENCE WEST, AT RIGHT ANGLES, 126 FEET, MORE OR LESS, TO THE WEST LINE OF THE NORTHEAST QUARTER (NE/4) OF THE NORTHWEST QUARTER (NW/4) OF SAID SECTION; THENCE SOUTH, ALONG THE WEST LINE OF THE NORTHEAST QUARTER (NE/4) OF THE NORTHWEST QUARTER (NW/4) OF SAID SECTION, 1170 FEET, TO THE SOUTHWEST CORNER (SW/C) THEREOF; THENCE EAST, ALONG THE SOUTH LINE OF SAID NORTHEAST QUARTER (NE/4) OF THE NORTHWEST QUARTER (NW/4) OF SAID SECTION, 106.8 FEET; THENCE NORTH, AT RIGHT ANGLES, 8 FEET; THENCE EAST, AT RIGHT ANGLES, 130 FEET; THENCE SOUTH, AT RIGHT ANGLES, 80 FEET; THENCE EAST, AT RIGHT ANGLES, 40 FEET; THENCE NORTH, AT RIGHT ANGLES, 80 FEET; THENCE EAST, AT RIGHT ANGLES, 130 FEET; THENCE SOUTH, AT RIGHT ANGLES, 80 FEET, TO THE SOUTH LINE OF THE NORTHEAST QUARTER (NE/4) OF THE NORTHWEST QUARTER (NW/4) OF SAID SECTION; THENCE EAST, ALONG SAID SOUTH LINE (WHICH IS ALSO THE NORTH LINE OF BRAUN'S SECOND ADDITION TO THE CITY OF VICTORIA, KANSAS), 260 FEET, TO THE POINT WHERE THE EAST BOUNDARY OF THE NORTH-SOUTH ALLEY BETWEEN JEFFERSON AND KANSAS STREETS INTERSECTS THE SOUTH LINE OF THE NORTHEAST QUARTER (NE/4) OF THE NORTHWEST QUARTER (NW/4) OF SAID SECTION; THENCE NORTH, PARALLEL TO THE WEST LINE OF THE NORTHEAST QUARTER (NE/4) OF THE NORTHWEST QUARTER (NW/4) OF SAID SECTION, 965 FEET; THENCE NORTHEASTERLY AND LEFT, ON A CURVE OF 210-FOOT RADIUS (INTERNAL ANGLE OF 135° 51'), A CURVE DISTANCE OF 131.35 FEET; THENCE NORTHERLY AND RIGHT ON A CURVE OF 250-FOOT RADIUS (INTERNAL ANGLE OF 49° 58'), A CURVE DISTANCE OF 218.07 FEET; THENCE EASTERLY ON TANGENT TO SAID CURVE, 150 FEET; THENCE NORTH, PARALLEL TO THE WEST LINE OF THE NORTHEAST QUARTER (NE/4) OF THE NORTHWEST QUARTER (NW/4) OF SAID SECTION, 125 FEET, TO THE NORTH LINE OF SAID SECTION 7; THENCE WEST, ALONG THE SAID NORTH LINE, 766.4 FEET, MORE OR LESS, TO THE POINT OF BEGINNING.



Layout Map Scale 1"=1000'

STATE OF KANSAS
ELLIS COUNTY
This instrument was filed for record

JUL 5 1963

2.00 copies of this instrument recorded in
of Clerk's office
Fees \$1.50
Trust \$5.00
Register of Deeds

Ordinance and Resolution 208-598
208-600
208-622

ENGINEER'S CERTIFICATE

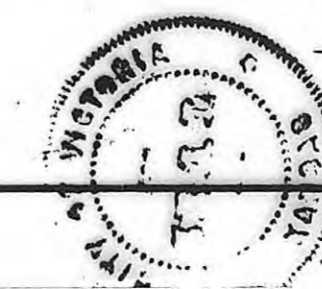
I, JOHN W. SMITH, A LICENSED PROFESSIONAL ENGINEER DO HEREBY CERTIFY THIS PLAT TO BE TRUE AND CORRECT TO THE BEST OF MY KNOWLEDGE.
SIGNED THIS 2 DAY OF July, 1963.

John W. Smith
JOHN W. SMITH



I HEREBY CERTIFY THAT THIS PLAT WAS FIRST SUBMITTED TO THE CITY PLANNING COMMISSION AND BY THIS COMMISSION TO THE GOVERNING BODY OF THE CITY OF VICTORIA, KANSAS AND BY SUCH BODY DULY APPROVED ON THIS 1 DAY OF July, 1963.

CITY CLERK



THIS IS A DIRECT PHOTOGRAPHIC REPRODUCTION OF THE OFFICIAL INSTRUMENT (RECORDED PLAT).

THIS REPRODUCTION WAS MADE BY BUCHER & WILLIS, CONSULTING ENGINEERS, PLANNERS & ARCHITECTS IN JUNE 1979

DRAWN BY <i>D. J. B.</i>	JOHN W. SMITH CONSULTING ENGINEER AND ASSOCIATES
CHECKED BY <i>D. J. B.</i>	
DATE May 63	JOB NO. 63-211
HAYS KANSAS	
PARKLANE ADDITION	
VICTORIA, KANSAS	

SHEET 1 OF 1