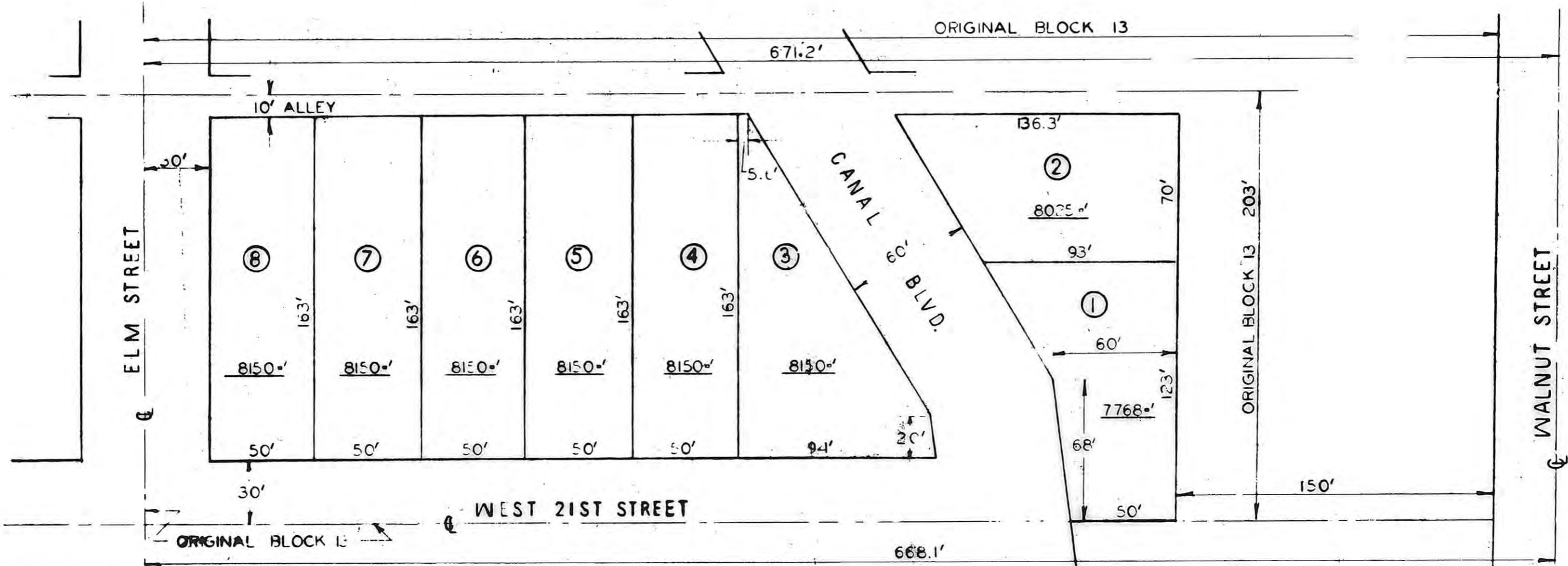


• PLAT OF PARKWOOD ADDITION •

BEING A SUB-DIVISION OF LOT OR BLOCK 13,
EXCEPT EAST 150', LEBOLD ALLEN & CO. ADDITION
CITY OF HAYS, KANSAS



SURVEYED DEC. 26, 1950
PLATTED JAN. 11, 1951



STATE OF KANSAS
ELLIS COUNTY
This instrument was filed for record
JUL 13 1952
100 of 100 M recorded in
2 of 100 Page 21
R. M. Come Register of Deeds

ARCHITECTURAL ENGINEERING
SERVICE
HAYS, KANSAS

I certify this to be a correct plat of the PARKWOOD ADDITION
of the City of Hays, Kansas, as same was surveyed and
platted by me.
Harold A. Rothaet
Harold A. Rothaet

For Dedication See Book 22 Misc Page 777

THIS IS A DIRECT PHOTOGRAPHIC REPRODUCTION OF THE OFFICIAL INSTRUMENT (RECORDED PLAT).
THIS REPRODUCTION WAS MADE BY BUCHER & WILLIS, CONSULTING ENGINEERS, PLANNERS &
ARCHITECTS IN JUNE 1979