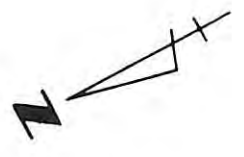
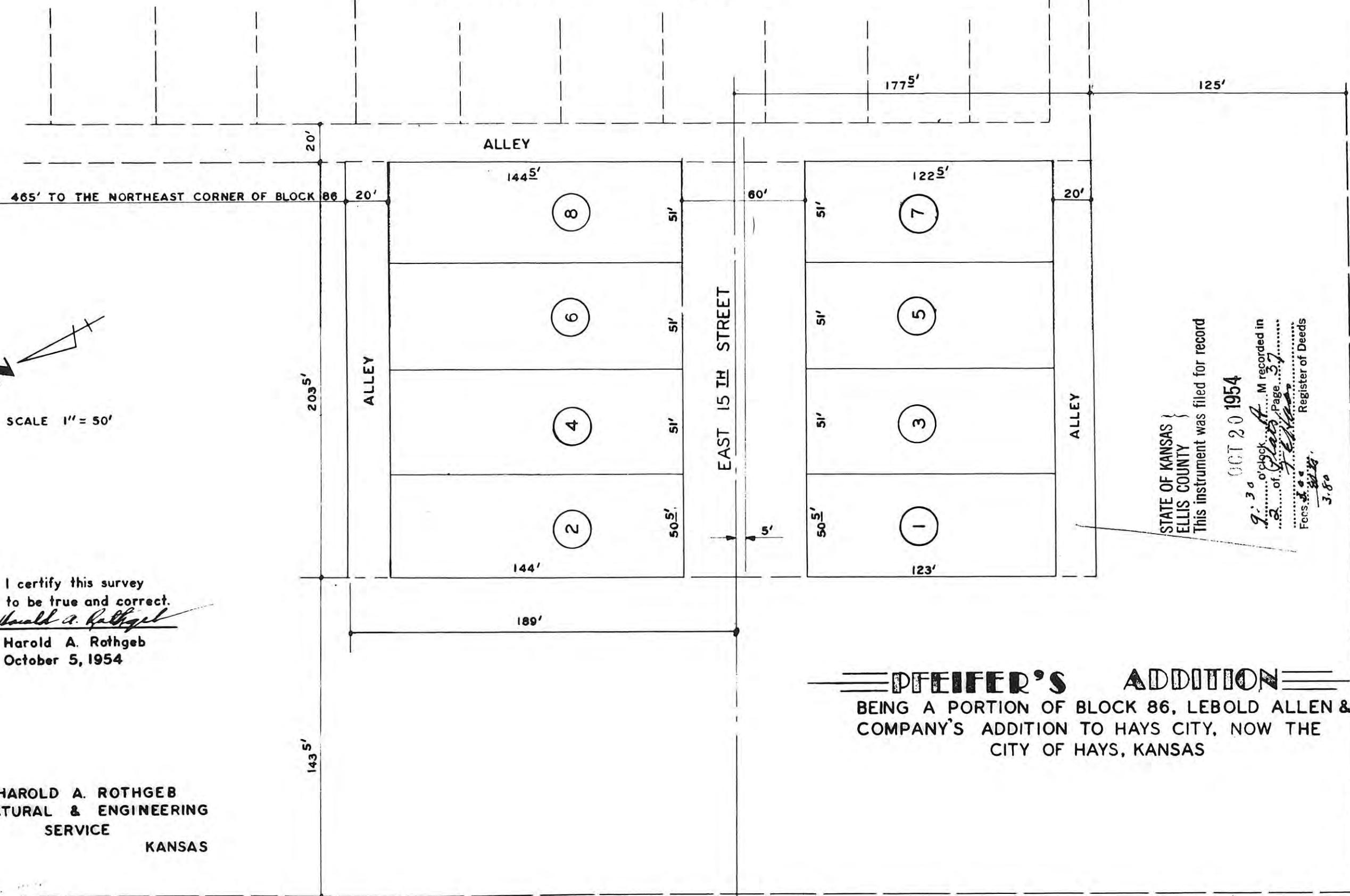


GOTTSCHALK ADDITION



SCALE 1" = 50'

I certify this survey to be true and correct.
Harold A. Rothgeb
Harold A. Rothgeb
October 5, 1954

HAROLD A. ROTHGEB
ARCHITECTURAL & ENGINEERING
SERVICE
HAYS KANSAS

STATE OF KANSAS }
ELLIS COUNTY }
This instrument was filed for record
OCT 20 1954
9:30 o'clock P.M. recorded in
Book of *Plat* Page 37
Fees \$*2.00* Register of Deeds
3.80

PFEIFER'S ADDITION
BEING A PORTION OF BLOCK 86, LEBOLD ALLEN &
COMPANY'S ADDITION TO HAYS CITY, NOW THE
CITY OF HAYS, KANSAS

I hereby certify that this plat was first submitted to the City Planning Commission and by the City Planning Commission to the Governing Body of the City of Hays, Kansas, and by such Governing Body duly approved on the 11th day of October, 1954.
Harold A. Rothgeb
City Clerk

THIS IS A DIRECT PHOTOGRAPHIC REPRODUCTION OF THE OFFICIAL INSTRUMENT (RECORDED PLAT).
THIS REPRODUCTION WAS MADE BY BUCHER & WILLIS, CONSULTING ENGINEERS, PLANNERS &
ARCHITECTS IN JUNE 1979