

# RE-PLAT

OF

BLOCKS 1, 2, 3, 18, 19, 20, 21, 22, 23, 24, 25, 26, 27, 28, AND  
THE WEST 360 FEET OF BLOCKS 33, 34, 35, 36, 37, 38,  
39, AND 40, TOGETHER WITH THE SOUTH 5 FEET OF

# THE EAST 90 FEET OF BLOCK 33 OF GEORGE PHILIP ADDITION

### ENGINEER'S CERTIFICATE

I, JOHN W. SMITH, A LICENSED PROFESSIONAL ENGINEER, DO HEREBY CERTIFY THIS PLAT TO BE TRUE AND CORRECT TO THE BEST OF MY KNOWLEDGE.

SIGNED THIS 12 DAY OF December, 1963.

*John W. Smith*  
JOHN W. SMITH, P.E.



I HEREBY CERTIFY THAT THIS PLAT WAS FIRST SUBMITTED TO THE CITY PLANNING COMMISSION AND BY THE CITY PLANNING COMMISSION TO THE GOVERNING BODY OF THE CITY OF HAYS, KANSAS AND BY SUCH GOVERNING BODY DULY APPROVED ON December 17, 1963.

*Dorothy Soderblom*  
DOROTHY SODERBLOM  
CITY CLERK

### CERTIFICATE OF RE-PLAT

I certify that by Ordinance No. 2069 of the City of Hays, Kansas, passed by the Governing Body on December 17, 1963, and published in the Hays Daily News, the official city newspaper, on December 17, 1963, the following described portion of GEORGE PHILIP ADDITION:

Blocks 1, 2, 3, 18, 19, 20, 21, 22, 23, 24, 25, 26, 27, 28, and the West 360 feet of Blocks 33, 34, 35, 36, 37, 38, 39, and 40, together with the South 5 feet of the East 90 feet of Block 33, all of George Philip Addition, a subdivision of a portion of the Northwest Quarter (NW/4) of Section Two (2), Township Fourteen (14) South, Range Eighteen (18), West of the 6th Principal Meridian, in Ellis County, Kansas;

has been changed so as to accord with the plat to which this certificate is attached.

*Dorothy Soderblom*  
Dorothy Soderblom, City Clerk  
City of Hays, Kansas  
December 17, 1963

(seal)

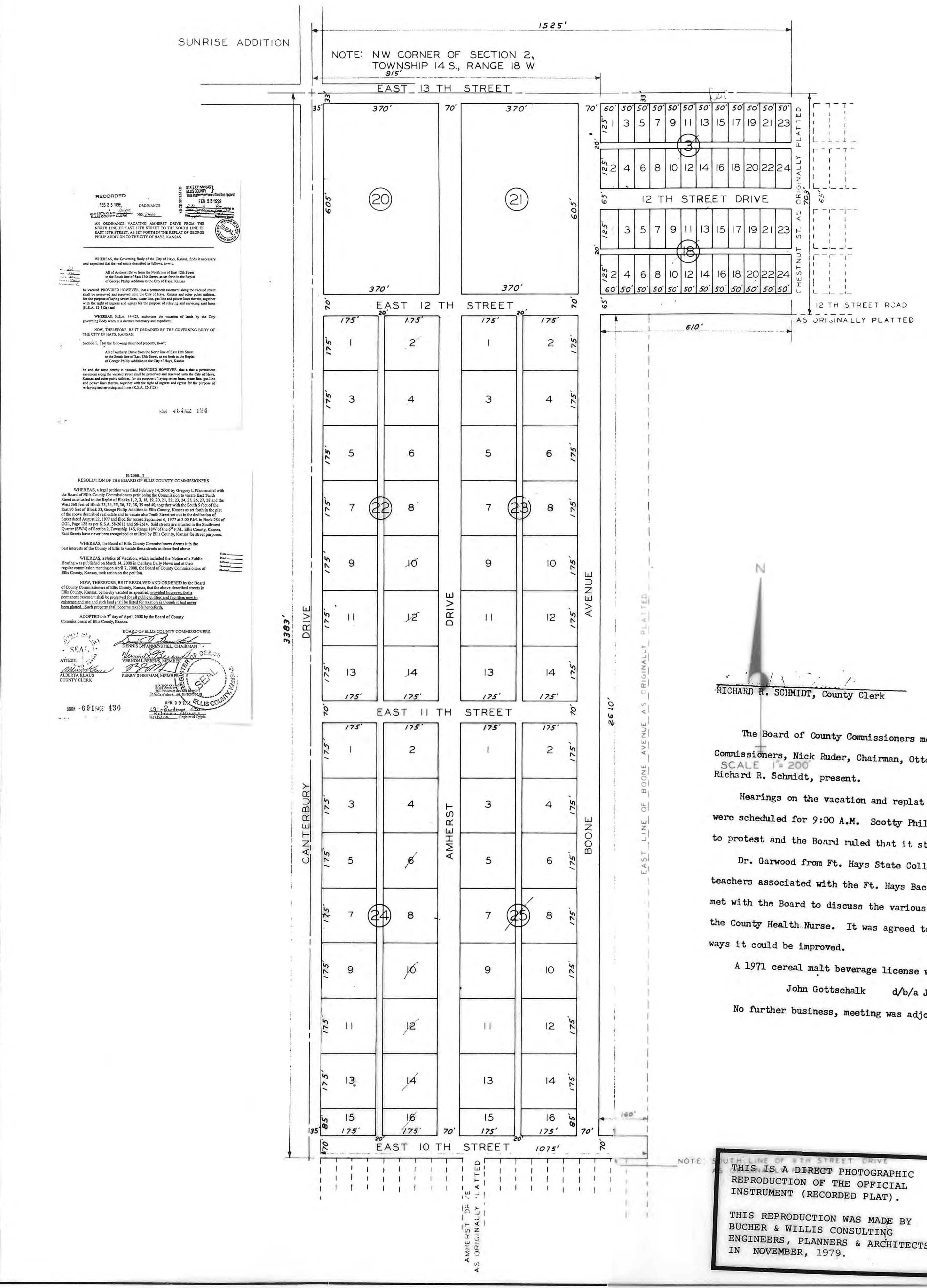
STATE OF KANSAS  
ELLIS COUNTY  
This instrument was filed for record

JAN 23 1964  
3:30 o'clock P.M. in recorded in  
of plat page 88  
Fees \$ 3.00  
Transfer 11.00  
Total \$ 14.00  
Register of Deeds

DRAWN BY J.M.J.		JOHN W. SMITH	
CHECKED BY J.M.S.		CONSULTING ENGINEER	
DATE Nov, 63		AND ASSOCIATES	
JOB NO. 63-230		HAYS KANSAS	

RE-PLAT  
OF A PORTION OF  
GEORGE PHILIP ADDITION  
HAYS KANSAS

SHEET  
OF 1



NOTE: THIS IS A DIRECT PHOTOGRAPHIC REPRODUCTION OF THE OFFICIAL INSTRUMENT (RECORDED PLAT).  
THIS REPRODUCTION WAS MADE BY  
BUCHER & WILLIS CONSULTING  
ENGINEERS, PLANNERS & ARCHITECTS  
IN NOVEMBER, 1979.

THIS IS A DIRECT PHOTOGRAPHIC REPRODUCTION OF THE OFFICIAL INSTRUMENT (RECORDED PLAT).  
THIS REPRODUCTION WAS MADE BY BUCHER & WILLIS, CONSULTING ENGINEERS, PLANNERS & ARCHITECTS IN NOVEMBER, 1979.

RECORDED  
FILE NO. 133  
ORDINANCE NO. 2069  
12 17 1963

WHEREAS the Governing Body of the City of Hays, Kansas, finds it necessary and expedient that the real estate described as follows be...  
AN ORDINANCE VACATING AMHERST DRIVE FROM THE NORTH LINE OF EAST 12TH STREET TO THE SOUTH LINE OF EAST 10TH STREET, AS SET FORTH IN THE RE-PLAT OF GEORGE PHILIP ADDITION TO THE CITY OF HAYS, KANSAS.

RESOLUTION OF THE BOARD OF ELLIS COUNTY COMMISSIONERS  
WHEREAS, a legal petition was filed February 14, 1968 by Gregory L. Plummer with the Board of Ellis County Commissioners...  
NOW, THEREFORE, BE IT RESOLVED AND ORDERED BY THE BOARD OF COUNTY COMMISSIONERS OF ELLIS COUNTY, KANSAS, that the above described streets be vacated and the plat be approved...

WHEREAS, a Notice of Vacation, which included the Notice of Public Hearing was published on March 14, 1968 in the Hays Daily News and at the regular commission meeting on April 7, 1968, the Board of County Commissioners of Ellis County, Kansas, took action on the petition.

NOW, THEREFORE, BE IT RESOLVED AND ORDERED BY THE BOARD OF COUNTY COMMISSIONERS OF ELLIS COUNTY, KANSAS, that the above described streets be vacated and the plat be approved...  
ADOPTED this 9th day of April, 1968 by the Board of County Commissioners of Ellis County, Kansas.

BOARD OF ELLIS COUNTY COMMISSIONERS  
ALBERTA LEASE, COUNTY CLERK

SEAL OF ELLIS COUNTY, KANSAS

SEAL OF ELLIS COUNTY, KANSAS

SEAL OF ELLIS COUNTY, KANSAS

SEAL OF ELLIS COUNTY, KANSAS

SEAL OF ELLIS COUNTY, KANSAS

SEAL OF ELLIS COUNTY, KANSAS