

# GEORGE PHILIP ADDITION

THIS IS A DIRECT PHOTOGRAPHIC REPRODUCTION OF THE OFFICIAL INSTRUMENT (RECORDED PLAT).

THIS REPRODUCTION WAS MADE BY BUCHER & WILLIS CONSULTING ENGINEERS, PLANNERS & ARCHITECTS IN JUNE 1979

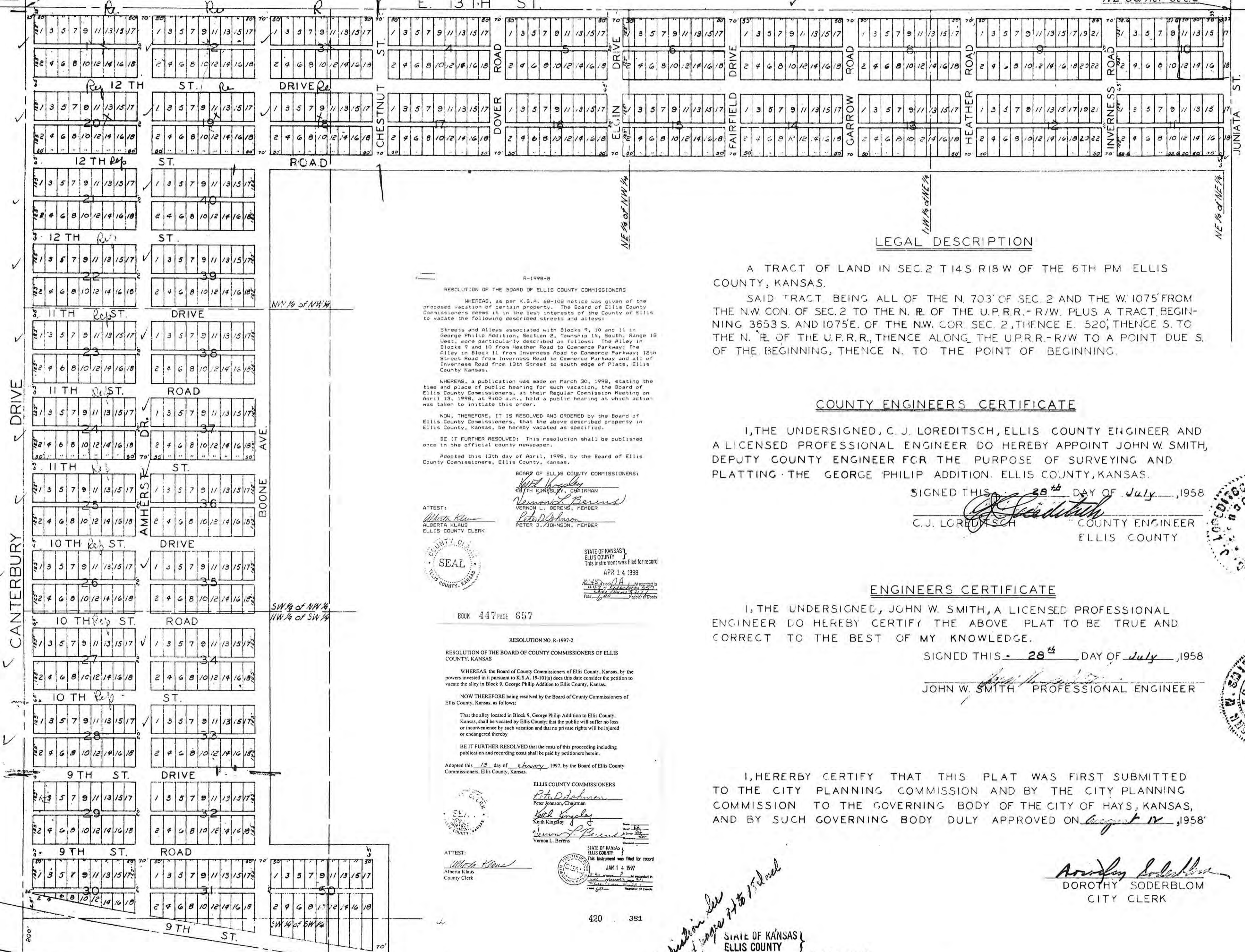
SUNRISE ADDITION

HANEY DRIVE

NW corner Sec. 2

E. 13TH ST.

NE corner Sec. 2



### LEGAL DESCRIPTION

A TRACT OF LAND IN SEC. 2 T14S R18W OF THE 6TH PM ELLIS COUNTY, KANSAS.

SAID TRACT BEING ALL OF THE N. 703' OF SEC. 2 AND THE W. 1075' FROM THE NW COR. OF SEC. 2 TO THE N. R. OF THE U.P.R.R. - R/W. PLUS A TRACT BEGINNING 3653 S. AND 1075 E. OF THE NW COR. SEC. 2, THENCE E. 520', THENCE S. TO THE N. R. OF THE U.P.R.R., THENCE ALONG THE U.P.R.R. - R/W TO A POINT DUE S. OF THE BEGINNING, THENCE N. TO THE POINT OF BEGINNING.

### COUNTY ENGINEERS CERTIFICATE

I, THE UNDERSIGNED, C. J. LOREDITSCH, ELLIS COUNTY ENGINEER AND A LICENSED PROFESSIONAL ENGINEER DO HEREBY APPOINT JOHN W. SMITH, A DEPUTY COUNTY ENGINEER FOR THE PURPOSE OF SURVEYING AND PLATTING THE GEORGE PHILIP ADDITION, ELLIS COUNTY, KANSAS.

SIGNED THIS 25<sup>th</sup> DAY OF July, 1958

C. J. LOREDITSCH COUNTY ENGINEER ELLIS COUNTY

### ENGINEERS CERTIFICATE

I, THE UNDERSIGNED, JOHN W. SMITH, A LICENSED PROFESSIONAL ENGINEER DO HEREBY CERTIFY THE ABOVE PLAT TO BE TRUE AND CORRECT TO THE BEST OF MY KNOWLEDGE.

SIGNED THIS 28<sup>th</sup> DAY OF July, 1958

JOHN W. SMITH PROFESSIONAL ENGINEER

I, HEREBY CERTIFY THAT THIS PLAT WAS FIRST SUBMITTED TO THE CITY PLANNING COMMISSION AND BY THE CITY PLANNING COMMISSION TO THE GOVERNING BODY OF THE CITY OF HAYS, KANSAS, AND BY SUCH GOVERNING BODY DULY APPROVED ON August 14, 1958.

DOROTHY SODERBLOM CITY CLERK

R-1998-B  
RESOLUTION OF THE BOARD OF ELLIS COUNTY COMMISSIONERS  
WHEREAS, as per K.S.A. 68-108 notice was given of the proposed vacation of certain property. The Board of Ellis County Commissioners, does, in the best interests of the County of Ellis to vacate the following described streets and alleys:  
Streets and Alleys associated with Blocks 9, 10 and 11 in George Philip Addition, Section 2, Township 14, South, Range 18 West, more particularly described as follows: The Alley in Blocks 9 and 10 from Heather Road to Commerce Parkway; The Alley in Block 11 from Inverness Road to Commerce Parkway; 12th Street Road from Inverness Road to Commerce Parkway and all of Inverness Road from 13th Street to south edge of Plats, Ellis County Kansas.  
WHEREAS, a publication was made on March 30, 1998, stating the time and place of public hearing for such vacation, the Board of Ellis County Commissioners, at their Regular Commission Meeting on April 13, 1998, at 9:00 a.m., held a public hearing at which action was taken to initiate this order.  
NOW, THEREFORE, IT IS RESOLVED AND ORDERED by the Board of Ellis County Commissioners, that the above described property in Ellis County, Kansas, be hereby vacated as specified.  
BE IT FURTHER RESOLVED: This resolution shall be published once in the official county newspaper.  
Adopted this 13th day of April, 1998, by the Board of Ellis County Commissioners, Ellis County, Kansas.  
BOARD OF ELLIS COUNTY COMMISSIONERS:  
Keith Karpis, Chairman  
Vernon L. Berens, Member  
Peter D. Johnson, Member  
ATTEST:  
Alberta Klaus, Ellis County Clerk

STATE OF KANSAS  
ELLIS COUNTY  
This instrument was filed for record  
APR 14 1998  
BOOK 447 PAGE 657

RESOLUTION NO. R-1997-2  
RESOLUTION OF THE BOARD OF COUNTY COMMISSIONERS OF ELLIS COUNTY, KANSAS  
WHEREAS, the Board of County Commissioners of Ellis County, Kansas, by the power invested in it pursuant to K.S.A. 68-101(a) does this date consider the petition to vacate the alley in Block 9, George Philip Addition to Ellis County, Kansas.  
NOW THEREFORE being resolved by the Board of County Commissioners of Ellis County, Kansas, as follows:  
That the alley located in Block 9, George Philip Addition to Ellis County, Kansas, shall be vacated by Ellis County; that the public will suffer no loss or inconvenience by such vacation and that no private rights will be injured or endangered thereby.  
BE IT FURTHER RESOLVED that the costs of this proceeding including publication and recording costs shall be paid by petitioners herein.  
Adopted this 15 day of January, 1997, by the Board of Ellis County Commissioners, Ellis County, Kansas.  
ELLIS COUNTY COMMISSIONERS  
Peter Johnson, Chairman  
Keith Karpis  
Vernon L. Berens  
ATTEST:  
Alberta Klaus, County Clerk

STATE OF KANSAS  
ELLIS COUNTY  
This instrument was filed for record  
JAN 14 1997  
BOOK 447 PAGE 657

For Dedication See 174-2-247 page 745 752 and  
STATE OF KANSAS  
ELLIS COUNTY  
This instrument was filed for record  
AUG 15 1958  
1958 was recorded in 2 of that page 257  
17.00

JOHN W. SMITH ENGINEERS & ARCHITECTS HAYS KANSAS

JOB NO. 272-58 JULY 1958

SCALE - 1" = 300'

R-1998-B-Revised  
RESOLUTION OF THE BOARD OF ELLIS COUNTY COMMISSIONERS  
WHEREAS, as per K.S.A. 68-102 notice was given of the proposed vacation of certain property. The Board of Ellis County Commissioners, does, in the best interests of the County of Ellis to vacate the following described streets and alleys:  
Streets and Alleys associated with Blocks 9, 10 and 11 in George Philip Addition, Section 2, Township 14, South, Range 18 West, more particularly described as follows: The Alley in Blocks 9 and 10 from Heather Road to Commerce Parkway; The Alley in Block 11 from Inverness Road to Commerce Parkway; 12th Street Road from Inverness Road to Commerce Parkway; 12th Street Road from Commerce Parkway to Commerce Parkway and all of Inverness Road from 13th Street to south edge of Plats, Ellis County Kansas.  
WHEREAS, the following was ordered from the above description: 12th Street Road from Commerce Parkway to Commerce Parkway and 12th Street Road from Commerce Parkway to Commerce Parkway.  
NOW, THEREFORE, IT IS RESOLVED AND ORDERED by the Board of Ellis County Commissioners, that the above described property in Ellis County, Kansas, be hereby vacated as specified.  
Adopted this 13th day of May, 1998, by the Board of Ellis County Commissioners, Ellis County, Kansas.  
BOARD OF ELLIS COUNTY COMMISSIONERS:  
Keith Karpis, Chairman  
Vernon L. Berens, Member  
Peter D. Johnson, Member  
ATTEST:  
Alberta Klaus, Ellis County Clerk

RECORDED  
MAY 5 1998  
ALBERTA KLAUS  
ELLIS COUNTY CLERK

RESOLUTION NO. R-1999-5  
RESOLUTION OF THE BOARD OF COUNTY COMMISSIONERS OF ELLIS COUNTY, KANSAS  
WHEREAS, a bond provision was filed on May 3, 1999 with the Board of County Commissioners of Ellis County, Kansas, petitioning the Board of County Commissioners to vacate the alley in Block 9, George Philip Addition to Ellis County, Kansas.  
NOW THEREFORE being resolved by the Board of County Commissioners of Ellis County, Kansas, as follows:  
That the alley located in Block 9, George Philip Addition to Ellis County, Kansas, shall be vacated by Ellis County; that the public will suffer no loss or inconvenience by such vacation and that no private rights will be injured or endangered thereby.  
BE IT FURTHER RESOLVED that the costs of this proceeding including publication and recording costs shall be paid by petitioners herein.  
Adopted this 12th day of June, 1999, by the Board of Ellis County Commissioners, Ellis County, Kansas.  
ELLIS COUNTY COMMISSIONERS  
Keith Karpis, Chairman  
Vernon L. Berens, Member  
Peter D. Johnson, Member  
ATTEST:  
Alberta Klaus, Ellis County Clerk

RECORDED  
JUN 1 1999  
ALBERTA KLAUS  
ELLIS COUNTY CLERK