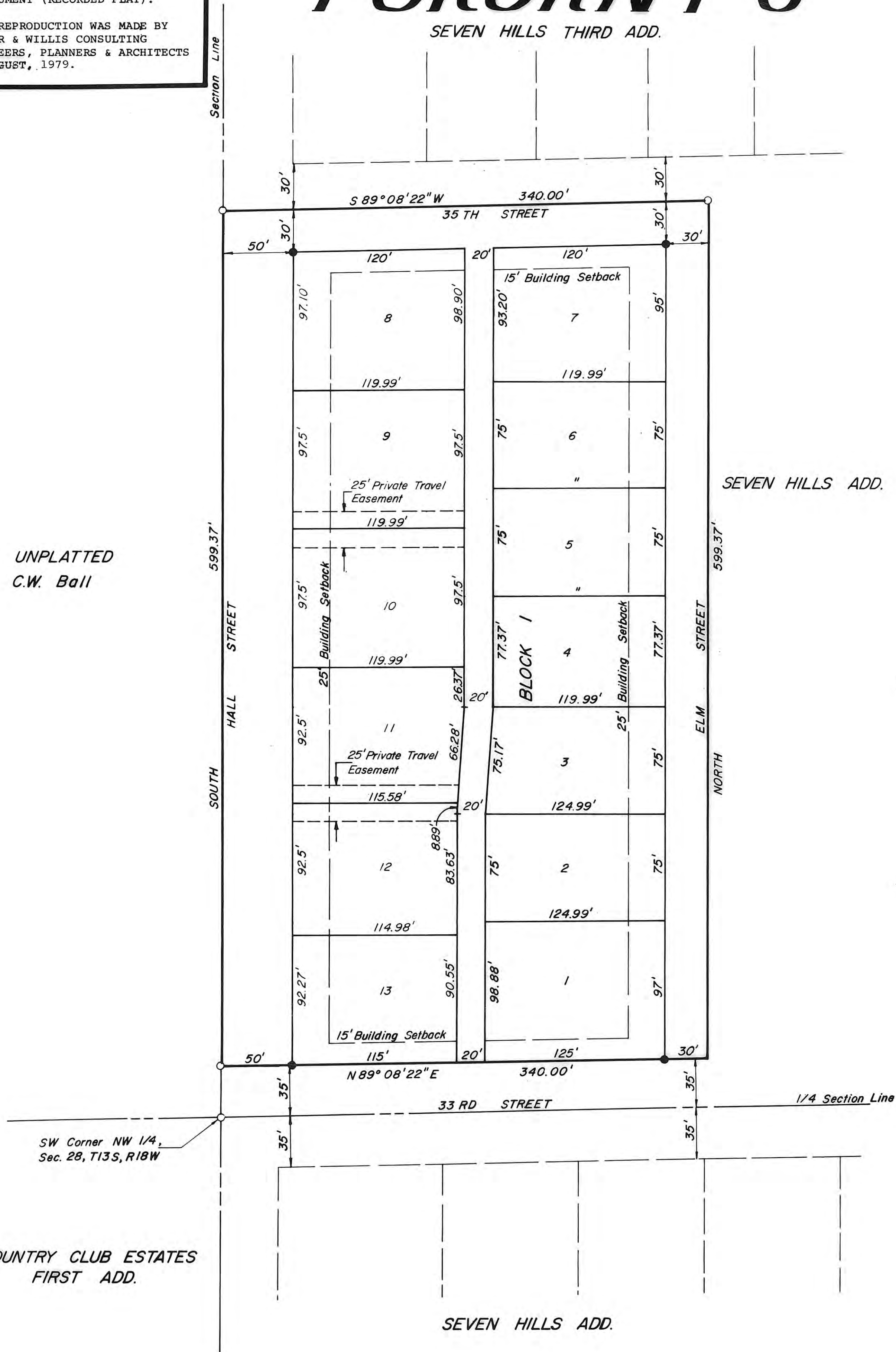


THIS IS A DIRECT PHOTOGRAPHIC REPRODUCTION OF THE OFFICIAL INSTRUMENT (RECORDED PLAT).

THIS REPRODUCTION WAS MADE BY BUCHER & WILLIS CONSULTING ENGINEERS, PLANNERS & ARCHITECTS IN AUGUST, 1979.

POKORNY'S CORNER

SEVEN HILLS THIRD ADD.



LEGAL DESCRIPTION

A tract of land in the Northwest Quarter of Section 28, Township 13 South, Range 18 West of the Sixth Principal Meridian in Ellis County, Kansas, and more particularly described as follows:

Beginning at the Southwest corner of said Northwest Quarter of Section 28; thence North a distance of 35.00 feet on the West line of said quarter section to the true point of beginning; thence N89°08'22"E a distance of 340.00 feet parallel with the South line of said quarter section; thence North a distance of 599.37 feet parallel with the West line of said quarter section; thence S89°08'22"W a distance of 340.00 feet parallel with the South line of said quarter section; thence South a distance of 599.37 feet on the West line of said quarter section to the point of beginning. Said tract containing 4.678 acres more or less.

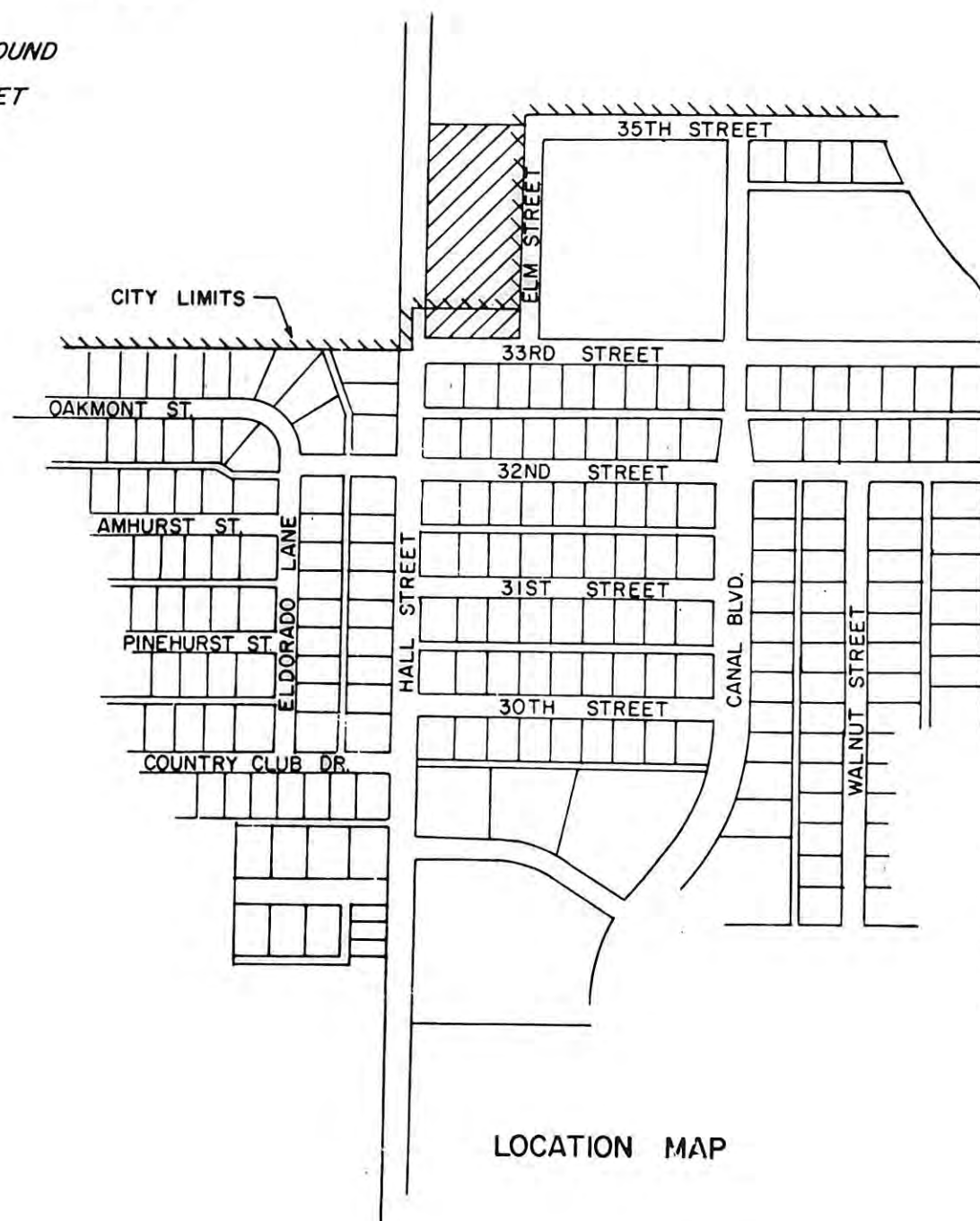
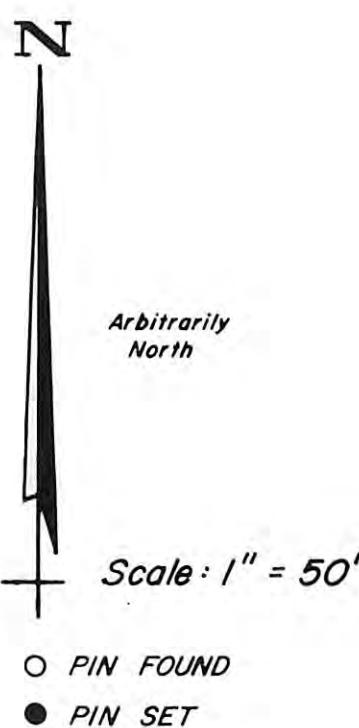
STREETS

Streets and alleys shown on this plat and not heretofore dedicated to and for public use are hereby so dedicated.

EASEMENTS

Easements are hereby dedicated for public use, as utility easement right-of-way which are shown as lying between the dashed lines in widths indicated and as set forth on this plat unless otherwise noted, and said easements may be employed for the purpose of installing, repairing and maintaining gas lines, electric lines, telephone lines, and all other forms and types of public utilities now or hereafter used by the public over, under, and along the strips marked "easements".

Private travel easements as set forth on this plat are for the purpose of ingress and egress to Hall Street for those lots adjoining each travel easement. No other points of ingress-egress to Hall Street shall be permitted.



SURVEYOR'S CERTIFICATE

STATE OF KANSAS
COUNTY OF ELLIS SS

I, Thomas W. McCormick, a licensed professional engineer in the State of Kansas, do hereby certify this plat to be true and correct to the best of my knowledge; and that all iron bars as shown have been accurately set. Survey completed in January 1977.

Thomas W. McCormick
Thomas W. McCormick, P.E.

OWNERS CERTIFICATE

STATE OF KANSAS
COUNTY OF ELLIS SS

Know all men by these presents, that we, the undersigned property owners of the land as above described, have caused the same to be surveyed and platted into lots, blocks, streets, alleys, and easements, the same to be known as **POKORNY'S CORNER** Addition to the City of Hays, in Ellis County, Kansas. The streets, alleys, and easements are hereby dedicated to and for the use of the public, and easements as indicated on the accompanying plat are hereby granted to the public for the purpose of constructing, operating, maintaining, and repairing all public utilities.

Robert D. Pokorny
Robert D. Pokorny
Alice O. Pokorny
Alice O. Pokorny

NOTARY CERTIFICATE

STATE OF KANSAS
COUNTY OF ELLIS SS

Be it remembered that on this 10th day of February, 1977, before me, a notary public in and for the said County and State, came Robert D. Pokorny and Alice O. Pokorny, his wife, to me personally known to be the same persons who executed the foregoing instrument of writing and duly acknowledge the execution of same. In testimony whereof, I have hereunto set my hand and affixed my notarial seal the day and year above written.

Glen B. Tabor
Notary Public

My Commission Expires Sept 17, 1979

APPROVALS:

This plat of **POKORNY'S CORNER** Addition has been submitted to and approved by the City of Hays Planning Commission this 21 day of March, 1977.

Margaret E. Smith Secretary
Steve D. Powell Chairman

The dedications shown on this plat accepted by the City Commission of the City of Hays, Kansas, this 21 day of March, 1977.

ATTEST: CITY OF HAYS, KANSAS
Annita L. Lusk City Clerk
Stacy Lusk Mayor

CERTIFICATE OF THE REGISTER OF DEEDS

STATE OF KANSAS
COUNTY OF ELLIS SS

This is to certify that this instrument was filed for record in the Register of Deeds office on the 12 day of April, 1977 in Book 2A, Page 47.

Virginia Herzig Register of Deeds
Rose Ann Rupp Deputy

Entered on transfer record this ___ day of ___, 1977.

County Clerk

ORIGINAL PLAT POKORNY'S CORNER ADDITION

TO THE
CITY OF HAYS
ELLIS COUNTY, KANSAS
PREPARED BY

HUBERT CASPAR JR
ENGINEERS ARCHITECTS
Junction City Hays City
KANSAS

FEBRUARY 1977

Ordinance No 2609 Art 281 Page 728
Plat + Dedication 281 729
Resolution 281 732

UNPLATTED
C.W. Ball

COUNTRY CLUB ESTATES
FIRST ADD.

SEVEN HILLS ADD.