



STATE OF KANSAS
 ELLIS COUNTY
 This instrument was filed for record
FEB 3 1964
 11:45 o'clock P.M. recorded in
 Book of Deeds, Page 36
 Fees \$1.15 Register of Deeds

ORDINANCE NO. 2064

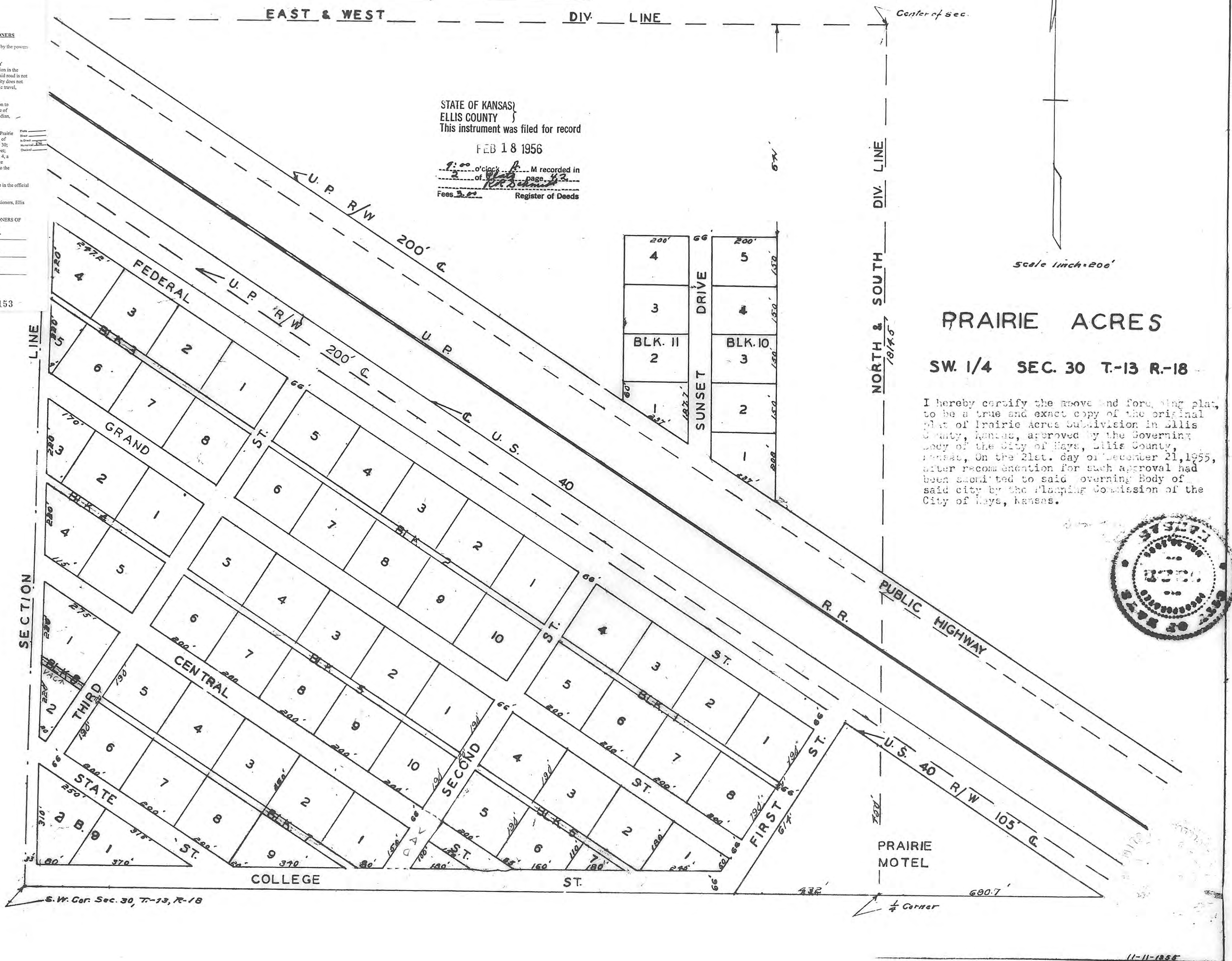
AN ORDINANCE VACATING CENTRAL STREET, FROM SECOND STREET TO COLLEGE STREET;
 AND ALSO VACATING THE ALLEY IN BLOCK EIGHT (8), ALL IN PRAIRIE ACRES, A
 SUBDIVIDED TRACT IN ELLIS COUNTY AND WITHIN THREE MILLS OF THE BOUNDARIES
 OF THE CITY OF HAYS, KANSAS.

42

THIS IS A DIRECT PHOTOGRAPHIC REPRODUCTION OF THE OFFICIAL INSTRUMENT (RECORDED PLAT).
 THIS REPRODUCTION WAS MADE BY BUCHER & WILLIS, CONSULTING ENGINEERS, PLANNERS &
 ARCHITECTS IN JUNE 1979

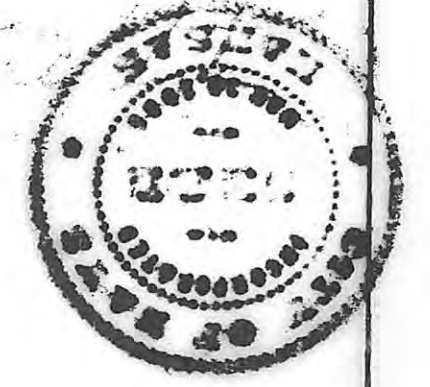
Resolution No. R-2005-
RESOLUTION OF THE BOARD OF ELLIS COUNTY COMMISSIONERS
 WHEREAS, the Board of County Commissioners of Ellis County, Kansas, by the powers
 vested in it by K.S.A. 68-102, et seq. may vacate roads in Ellis County, Kansas.
 NOW, THEREFORE, BE IT RESOLVED BY THE BOARD OF COUNTY
 COMMISSIONERS OF ELLIS COUNTY, KANSAS, that effective upon publication in the
 official county newspaper, the following described road shall be vacated because said road is not
 a public utility by reason of non-use and the necessity for such road as a public utility does not
 justify the expenditure of the necessary funds to put the same in condition for public travel,
 to-wit:
 A portion of the most Westerly street in the Plat of Prairie Acres Subdivision to
 Ellis County, Kansas, said street running North & South along the West line of
 Section 30, Township 13 South, Range 18 West of the Sixth Principal Meridian,
 Ellis County, Kansas, more particularly described as follows, to-wit:
 Beginning at the Southwest corner of Lot Three (3), Block Four (4) of said Prairie
 Acres Subdivision; Thence Northwest along the extension of the South line of
 said Lot 3, Block 4, a distance of 39.19 feet to the West line of said Section 30;
 Thence North along the West line of said Section 30 a distance of 225.63 feet;
 Thence Southeast along the extension of the North line of said Lot 3, Block 4, a
 distance of 39.19 feet to the Northwest corner of said Lot 3, Block 4; Thence
 South along the West line of said Lot 3, Block 4, a distance of 225.63 feet to the
 Point of Beginning.
 BE IT FURTHER RESOLVED that this Resolution shall be published once in the official
 county newspaper and shall be in effect from and after the date of publication.
 Adopted this 14th day of April, 2005, by the Board of County Commissioners, Ellis
 County, Kansas.
 BOARD OF COUNTY COMMISSIONERS OF
 ELLIS COUNTY, KANSAS
 Dennis Pfaffenberger, Chairman
 Christopher S. Channell
 Vernon Berens
 Attest:
 Alberta Klaus, County Clerk

STATE OF KANSAS
 ELLIS COUNTY
 This instrument was filed for record
FEB 18 1956
 1:00 o'clock P.M. recorded in
 Book of Deeds, Page 43
 Fees \$2.00 Register of Deeds



PRAIRIE ACRES
 SW. 1/4 SEC. 30 T-13 R-18

I hereby certify the above and foregoing plat
 to be a true and exact copy of the original
 plat of Prairie Acres Subdivision in Ellis
 County, Kansas, approved by the Governing
 Body of the City of Hays, Ellis County,
 Kansas, on the 21st. day of December 21, 1955,
 after recommendation for such approval had
 been submitted to said governing Body of
 said city by the Planning Commission of the
 City of Hays, Kansas.



11-11-1956