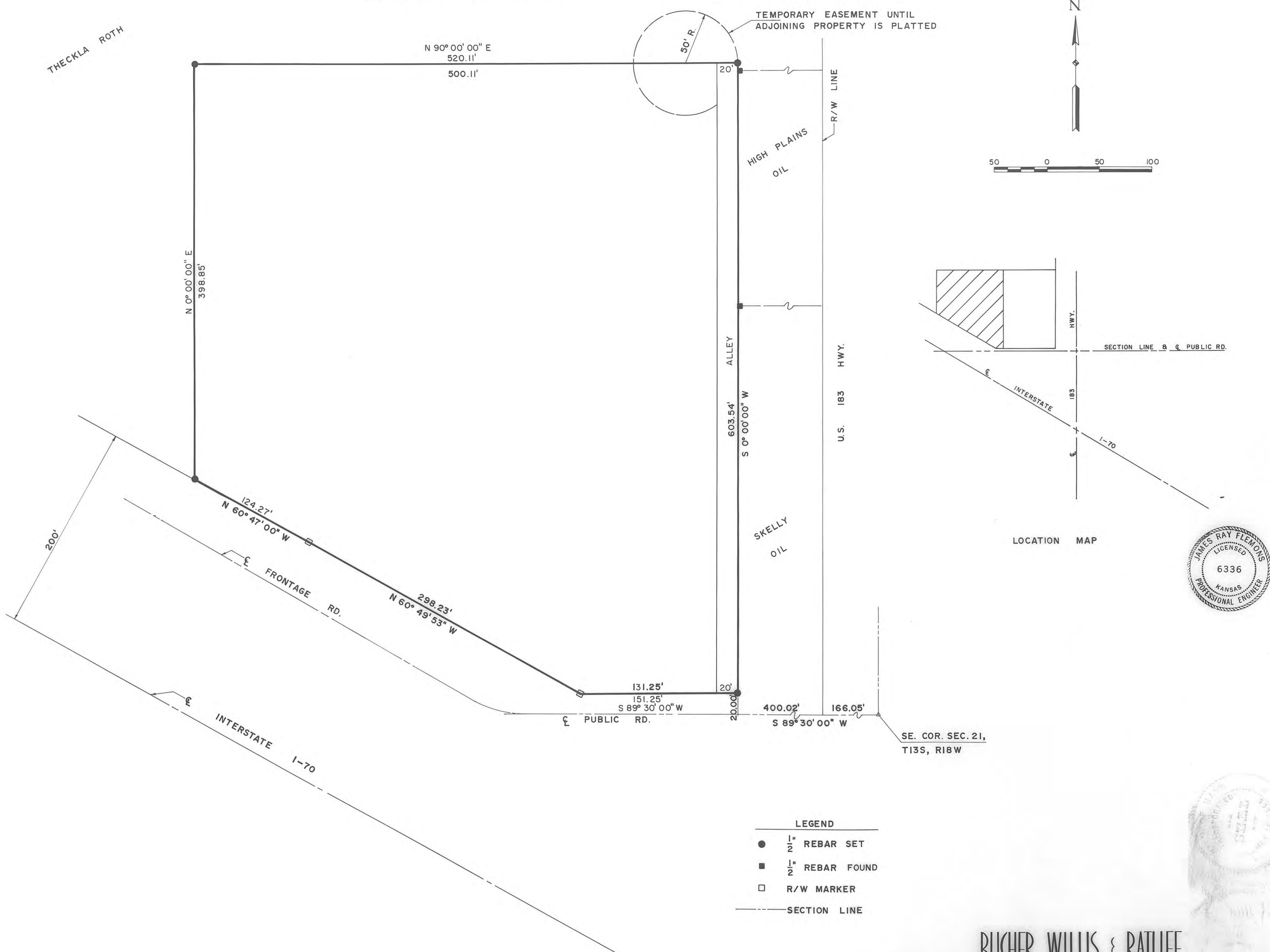


PLAT OF ROTH FIRST ADDITION ELLIS COUNTY, KANSAS



LEGAL DESCRIPTION:
A tract of land situated in the Southeast Quarter (SE $\frac{1}{4}$) of Section 21, Township 13 South, Range 18 West of the Sixth Principal Meridian, in Ellis County, Kansas, more particularly described as follows:
Commencing at the Southeast (SE) corner of Section 21, Township 13 South, Range 18 West; THENCE on an assumed bearing of S 89°30'00" W along the south line of said Section 21 a distance of 566.07 feet; THENCE on a bearing of N 0°00'00" W and parallel with the west right-of-way line of U.S. 183 Highway, a distance of 20.00 feet to a point on the north public roadway right-of-way and the point of beginning; THENCE on a bearing of S 89°30'00" W along said roadway right-of-way a distance of 151.25 feet to a point on the north right-of-way of Interstate I-70; THENCE on a bearing of N 60°49'53" W along said right-of-way line a distance of 298.23 feet; THENCE on a bearing of N 60°47'00" W along said right-of-way line a distance of 124.27 feet; THENCE on a bearing of N 0°00'00" E and parallel with the west right-of-way line of U.S. 183 Highway a distance of 398.85 feet; THENCE on a bearing of N 90°00'00" E a distance of 520.11 feet; THENCE on a bearing of S 0°00'00" W and parallel with the west right-of-way line of U.S. 183 Highway a distance of 603.54 feet to the point of beginning. Said tract contains 6.348 acres more or less.

ALLEYS, EASEMENTS
Alleys as shown on this plat and not heretofore dedicated to and for public use are hereby so dedicated.
Easements are hereby dedicated for public use, as utility easement right-of-way which are shown as lying between the dashed lines in widths indicated and as set forth on this plat, and said easements may be employed for the purpose of installing, repairing and maintaining gas lines, electric lines, telephone lines and all other forms and types of public utilities, new or hereafter used, by the public over, under and along the strips marked "Utility Esm't".

OWNER'S CERTIFICATE:
Know all men by these presents, that we, the undersigned property owners of the land above described, have caused the same to be surveyed and platted into lots, blocks, alleys and easements; the same to be known as "Roth First Addition" in Ellis County, Kansas. The alleys are hereby dedicated to and for the use of the public, and easements as indicated on the accompanying plat are hereby granted to the public for the purpose of constructing, operating, maintaining and repairing all public utilities.
By Theckla Roth
Theckla Roth
231 East 12th Street
Hays, Kansas 67601

NOTARY CERTIFICATE:
State of Kansas, County of Ellis, ss
Be it remembered that on this 16 day of May, 1983, before me, a notary public in and for said County and State, came Theckla Roth, to me personally known to be the same persons who executed the foregoing instrument of writing and duly acknowledged the execution of same. In testimony whereof, I have hereunto set my hand and affixed my notarial seal the day and year above written.

My Commission Expires

Dorothy Sorenson
Notary Public

SURVEYOR'S CERTIFICATE:
I, James R. Flemons, a licensed professional engineer in the State of Kansas, do hereby certify this plat to be true and correct to the best of my knowledge; and that all iron bars as shown have been accurately set. Survey completed in May, 1983.
James R. Flemons
James R. Flemons, P.E.

APPROVALS:
This plat has been submitted to and approved by the Hays-Ellis County Planning Commission this 16 day of May, 1983.
May J. Schmitt Secretary
Blair E. Pritchard Chairman

The dedication shown on this plat is accepted by the City Commission of the City of Hays, Kansas, this 20 day of May, 1983.
ATTEST: CITY OF HAYS, KANSAS
Dorothy Sorenson City Clerk
Daniel E. Rupp Mayor

The dedication shown on this plat is accepted by the County Commission of Ellis County, Kansas, this 31 day of May, 1983.
ATTEST: ELLIS COUNTY, KANSAS
Emory J. Rome County Clerk
Blair E. Pritchard Chairman

RECORDED:
State of Kansas, County of Ellis, ss
This is to certify that this instrument was filed for record in the Register of Deeds Office on the 31 day of May, 1983, in Plat Cabinet, Sheet No. 307, P. 20, 02.
Plat & Ded. Blk 333 p 48
Resolution Blk 333 p 51
Virginia J. Arroyo
Register of Deeds

- LEGEND**
- 1" REBAR SET
 - 1/2" REBAR FOUND
 - R/W MARKER
 - SECTION LINE

BUCHER, WILLIS & RATLIFF
CONSULTING ENGINEERS, PLANNERS & ARCHITECTS

