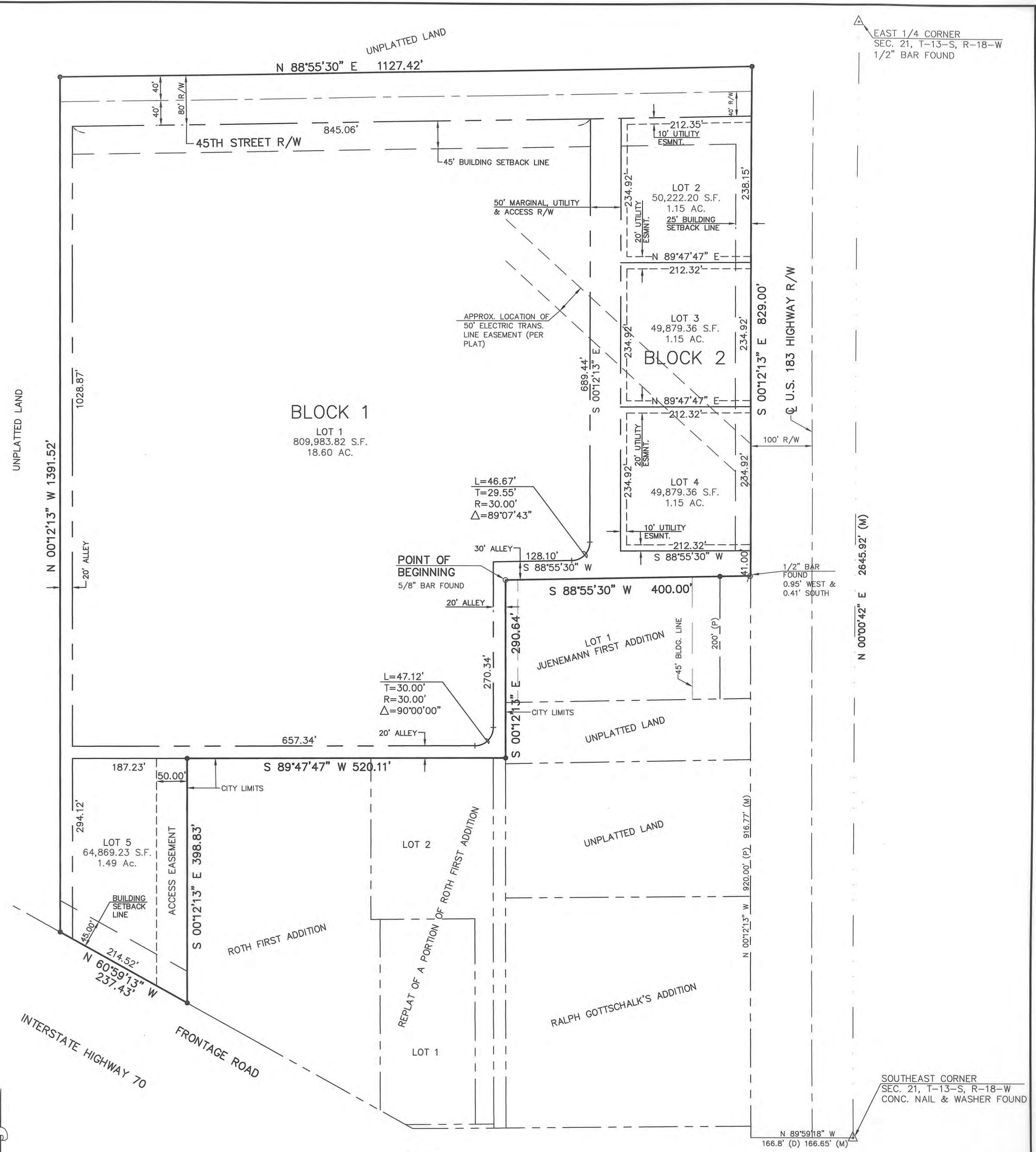


ORIGINAL



FINAL

**FINAL PLAT**  
**ROTH SECOND ADDITION**

UNPLATTED LAND AND A REPLAT OF A PORTION OF JUENEMANN FIRST ADDITION

TO

THE CITY OF HAYS,  
ELLIS COUNTY, KANSAS  
KAW VALLEY ENGINEERING, INC.  
JUNCTION CITY, KANSAS 66441  
PROJECT NO. A02141 SHEET 2 OF 2

- LEGEND**
- 1"x24" PIPE SET IN CONCRETE W/ LS#20 CAP
  - MONUMENT FOUND
  - (P) PLATTED
  - (D) DESCRIBED
  - (M) MEASURED

