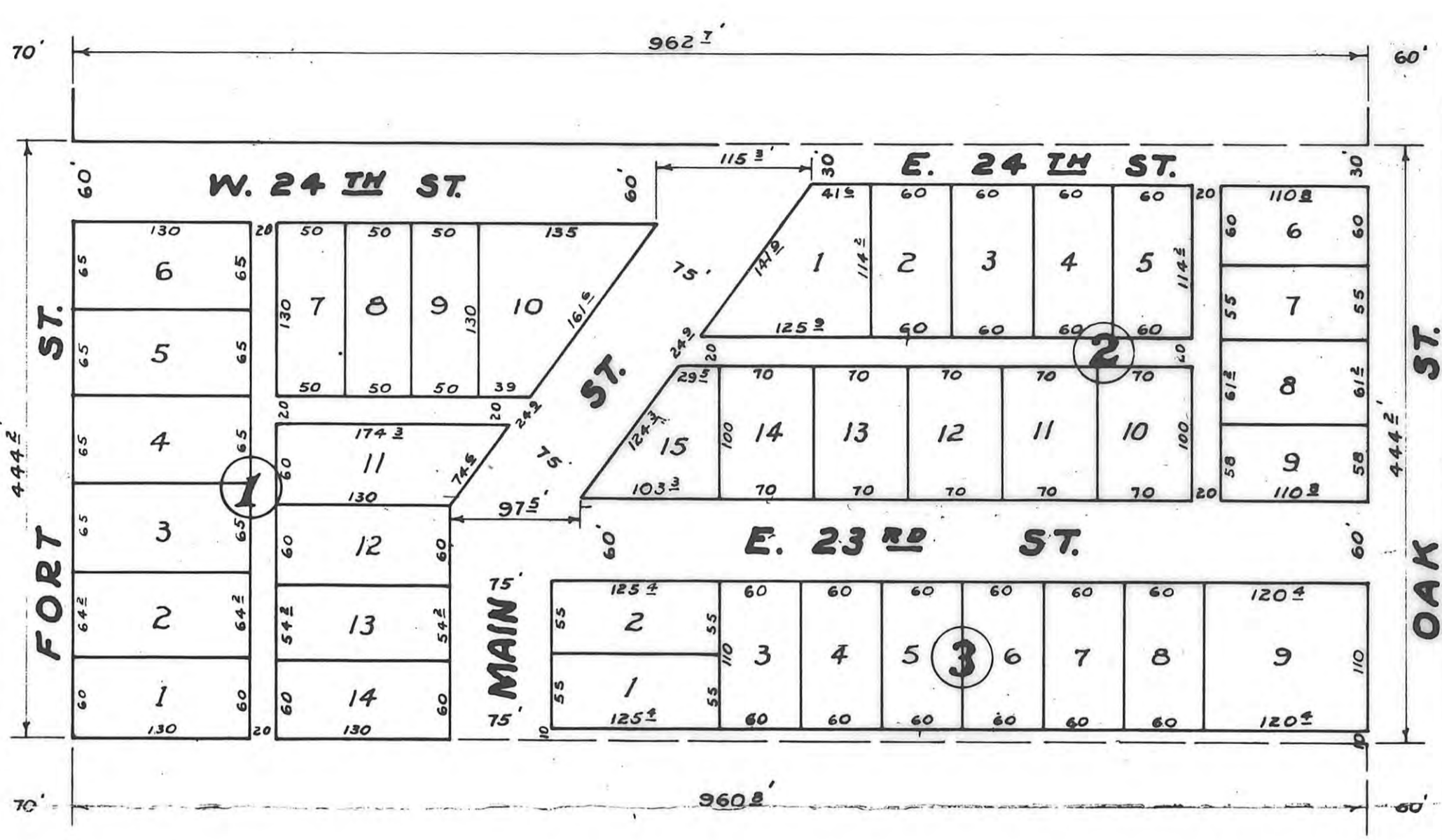


S & L SUB-DIVISION

HAYS, KANSAS

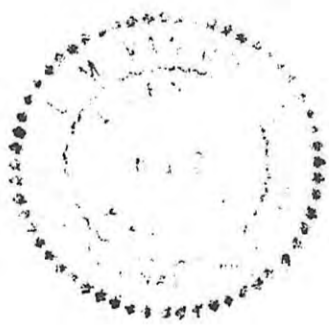
A SUB DIVISION OF ORIGINAL BLOCKS 50, 51, 59 & 60
LEOBOLD ALLEN & COS ADDITION



For Deeds, see 22 of Misc. 457

STATE OF KANSAS } SS
ELLIS COUNTY }
This instrument was filed for record
FEB 11 1950
11:00 o'clock A.M. recorded in
2 of Plate Page 5
Alvin H. Rouse
Register of Deeds
Fee 3.00
5.70 to
8.70

SCALE 1" = 100'



SURVEYED SEPT. 5 1949
PLATTED DEC. 12 1949

BY
SERVIS & VAN DOREN
CONSULTING ENGINEERS
HAYS KANSAS

I certify this to be a correct plat
of the S & L Subdivision of the city
of Hays, Kansas, as same was sur-
veyed and platted by me.
L. M. Van Doren

THIS IS A DIRECT PHOTOGRAPHIC REPRODUCTION OF THE OFFICIAL INSTRUMENT (RECORDED PLAT).
THIS REPRODUCTION WAS MADE BY BUCHER & WILLIS, CONSULTING ENGINEERS, PLANNERS &
ARCHITECTS IN JUNE 1979