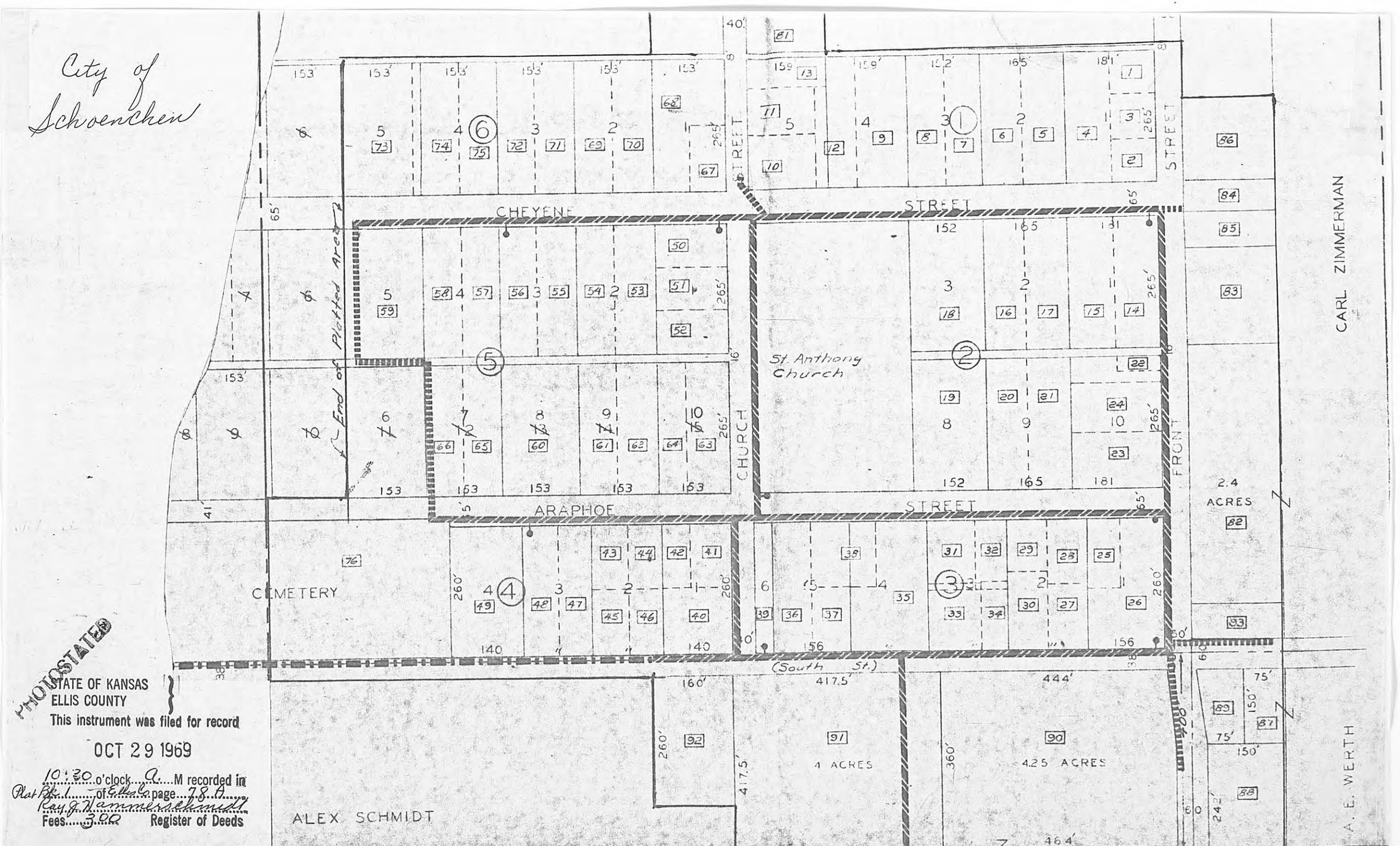
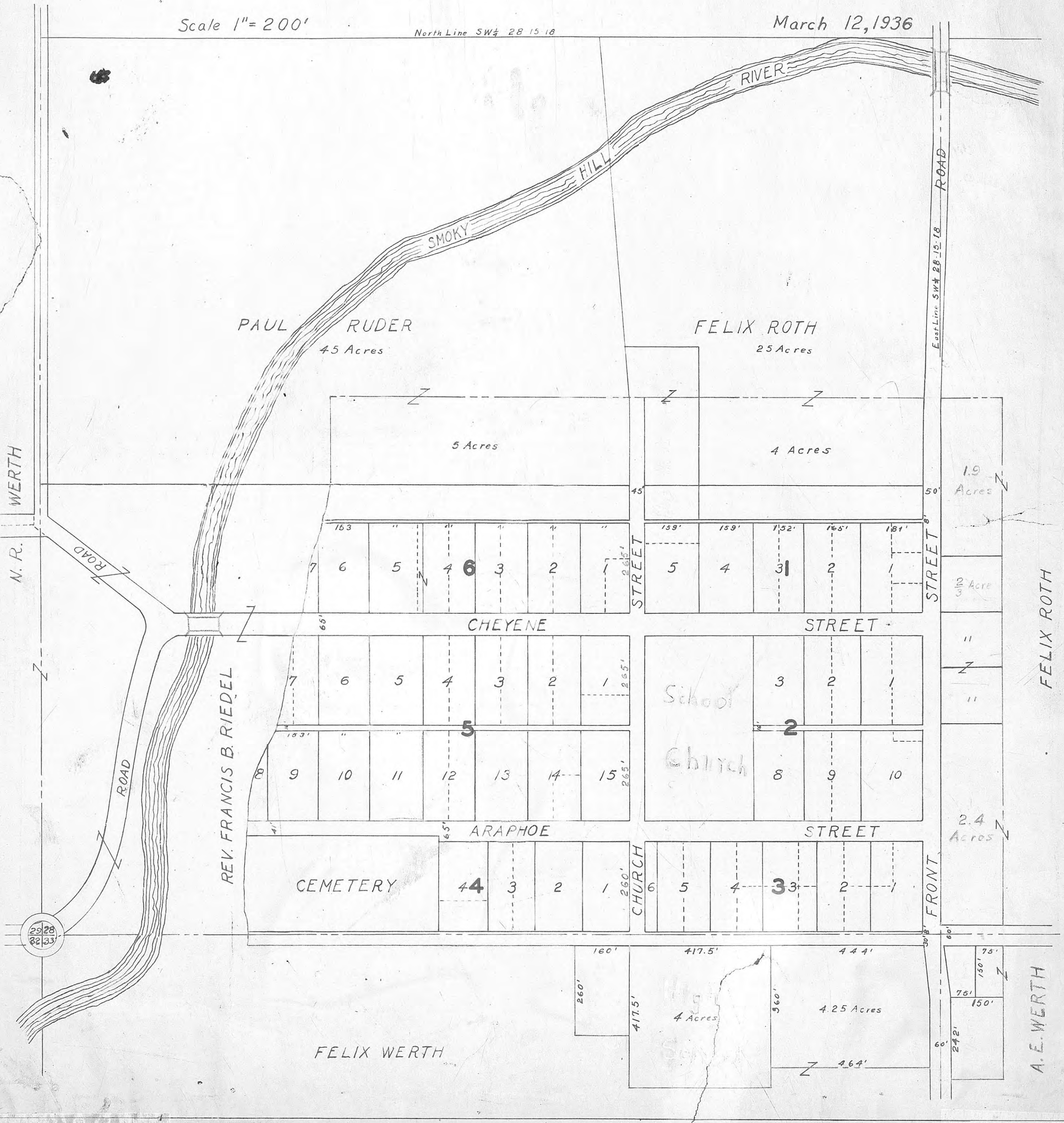


SCHOENCHEN, KANSAS

Scale 1" = 200'

North Line SW 28 15 18

March 12, 1936



City of Schoenchen

PHOTOSTATED

STATE OF KANSAS
ELLIS COUNTY

This instrument was filed for record
OCT 29 1969

10:30 o'clock A.M. recorded in
Plat No. 1 of Schoenchen, page 73
City of Schoenchen, Kansas
Fees \$3.00 Register of Deeds

ALEX. SCHMIDT