

SCHOOL SECOND ADDITION

TO THE CITY OF HAYS, KANSAS

A PORTION BEING A REPLAT OF LOT 20, SCHOOL ADDITION; AND LOT 1, BLOCK 1 OF THE REPLAT OF BLOCK 1, NORTHRIDGE ADDITION.

COUNTY ENGINEER'S CERTIFICATE

I, THE UNDERSIGNED, C. J. LOREDITSCH, ELLIS COUNTY ENGINEER AND A LICENSED PROFESSIONAL ENGINEER, DO HEREBY APPOINT JOHN W. SMITH DEPUTY COUNTY ENGINEER FOR THE PURPOSE OF SURVEYING AND PLATTING SCHOOL SECOND ADDITION TO THE CITY OF HAYS, KANSAS.

SIGNED THIS 12 DAY OF May, 1959.

C. J. LOREDITSCH CO. ENGINEER
ELLIS COUNTY



ENGINEER'S CERTIFICATE

I, THE UNDERSIGNED, JOHN W. SMITH, A LICENSED PROFESSIONAL ENGINEER, DO HEREBY CERTIFY THIS PLAT TO BE TRUE AND CORRECT TO THE BEST OF MY KNOWLEDGE.

SIGNED THIS 12 DAY OF May, 1959.

John W. Smith
JOHN W. SMITH, P.E.



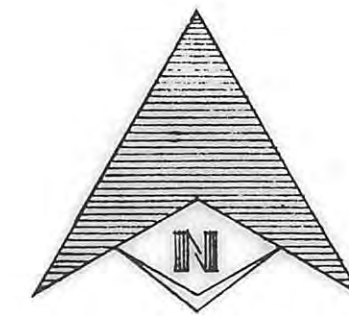
I HEREBY CERTIFY THAT THIS PLAT WAS FIRST SUBMITTED TO THE CITY PLANNING COMMISSION AND BY THE CITY PLANNING COMMISSION TO THE GOVERNING BODY OF THE CITY OF HAYS, KANSAS AND BY SUCH GOVERNING BODY DULY APPROVED ON May 14, 1959.

Dorothy Soderblom
DOROTHY SODERBLOM
CITY CLERK

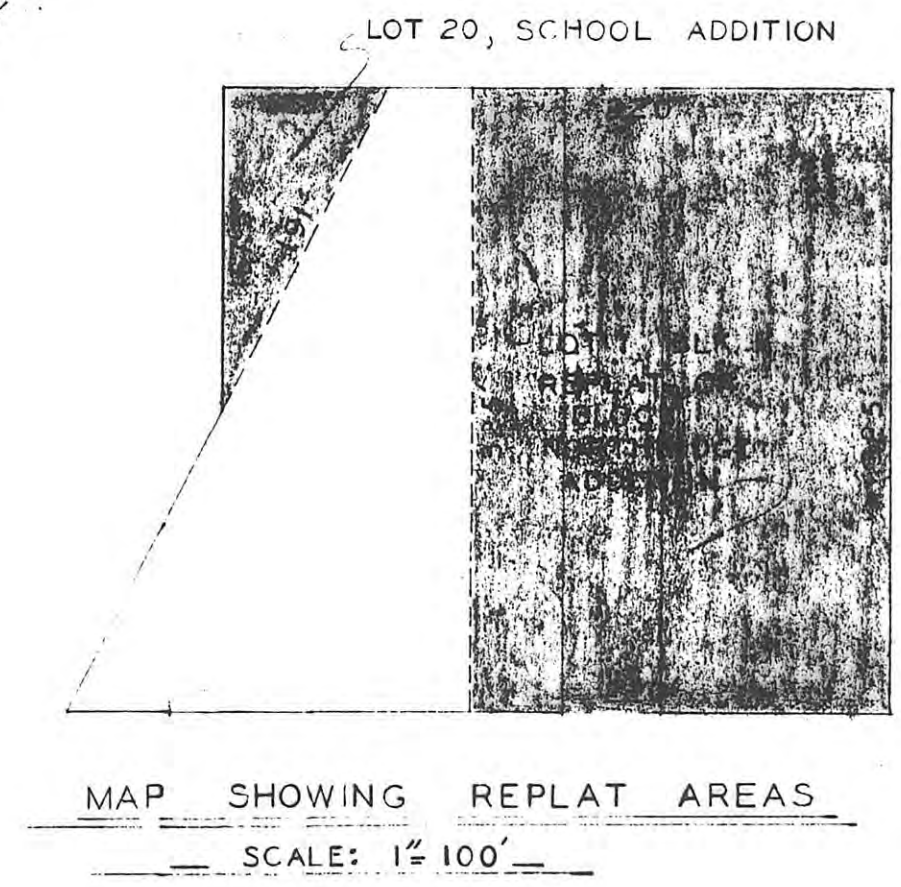
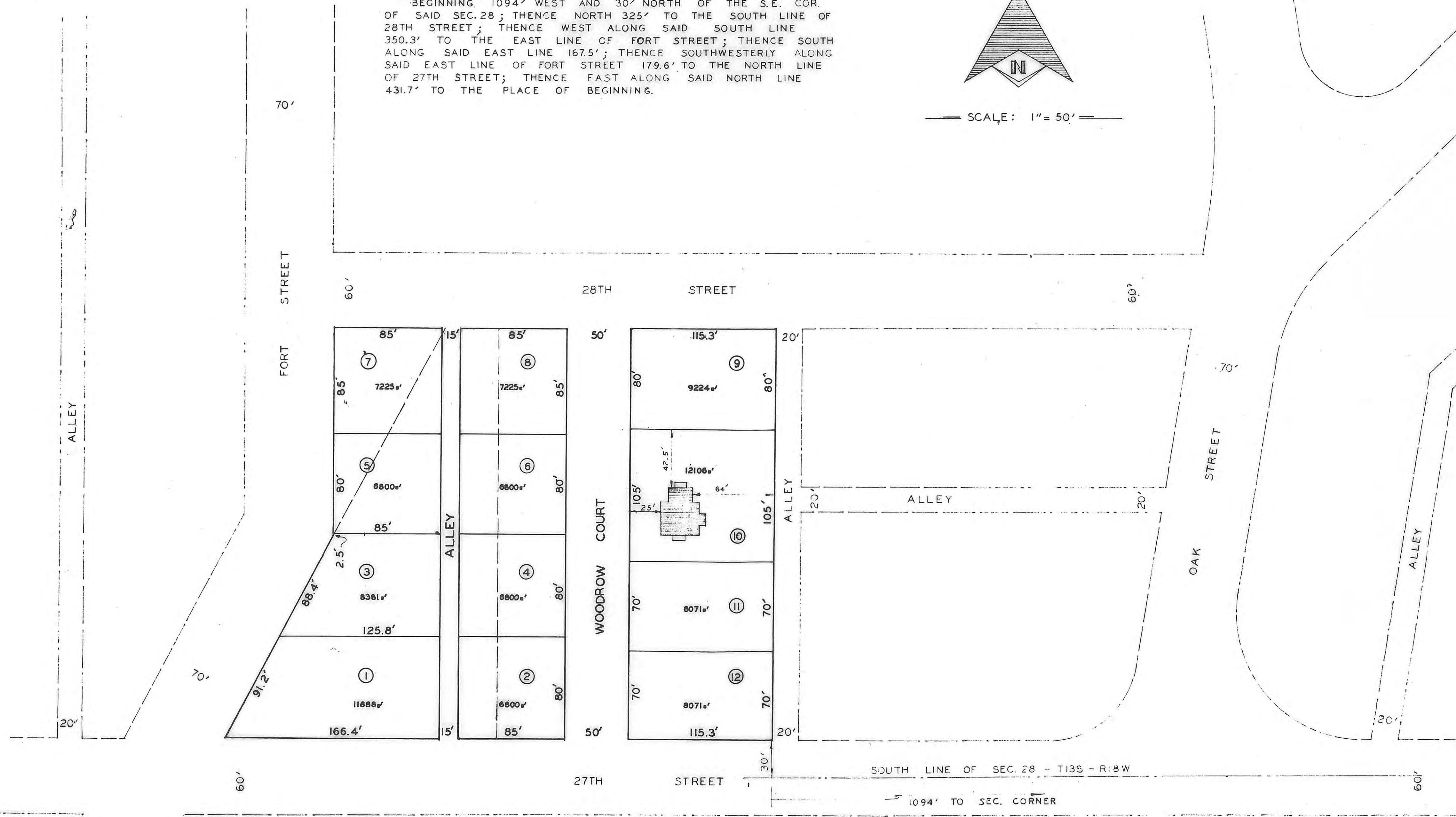


LEGAL DESCRIPTION

A TRACT OF LAND IN SEC. 28 - T13S - R18W OF THE 6TH P.M. DESCRIBED AS FOLLOWS:
BEGINNING 1094' WEST AND 30' NORTH OF THE S.E. COR. OF SAID SEC. 28; THENCE NORTH 325' TO THE SOUTH LINE OF 28TH STREET; THENCE WEST ALONG SAID SOUTH LINE 350.3' TO THE EAST LINE OF FORT STREET; THENCE SOUTH ALONG SAID EAST LINE 167.5'; THENCE SOUTHWESTERLY ALONG SAID EAST LINE OF FORT STREET 179.6' TO THE NORTH LINE OF 27TH STREET; THENCE EAST ALONG SAID NORTH LINE 431.7' TO THE PLACE OF BEGINNING.



SCALE: 1" = 50'



THIS IS A DIRECT PHOTOGRAPHIC REPRODUCTION OF THE OFFICIAL INSTRUMENT (RECORDED PLAT).
THIS REPRODUCTION WAS MADE BY BUCHER & WILLIS, CONSULTING ENGINEERS, PLANNERS & ARCHITECTS IN JUNE 1979

STATE OF KANSAS
ELLIS COUNTY
This instrument was filed for record
MAY 22 1959
2:20 clock P.M. recorded in
of page
Fees \$2.50 Register of Deeds

DRAWN BY		JOHN W. SMITH	
CHECKED BY		ENGINEERS & ARCHITECTS	
DATE	JOB NO.	HAYS, KANSAS	
MAY 59	244-59		
SCHOOL SECOND ADDITION			
TO THE CITY OF HAYS, KANS.			
SHEET		OF	