

AN ORDINANCE VACATING THAT PORTION OF THIRTIETH STREET, EXTENDING FROM ASH STREET TO OAK STREET, IN THE CITY OF HAYS, KANSAS.

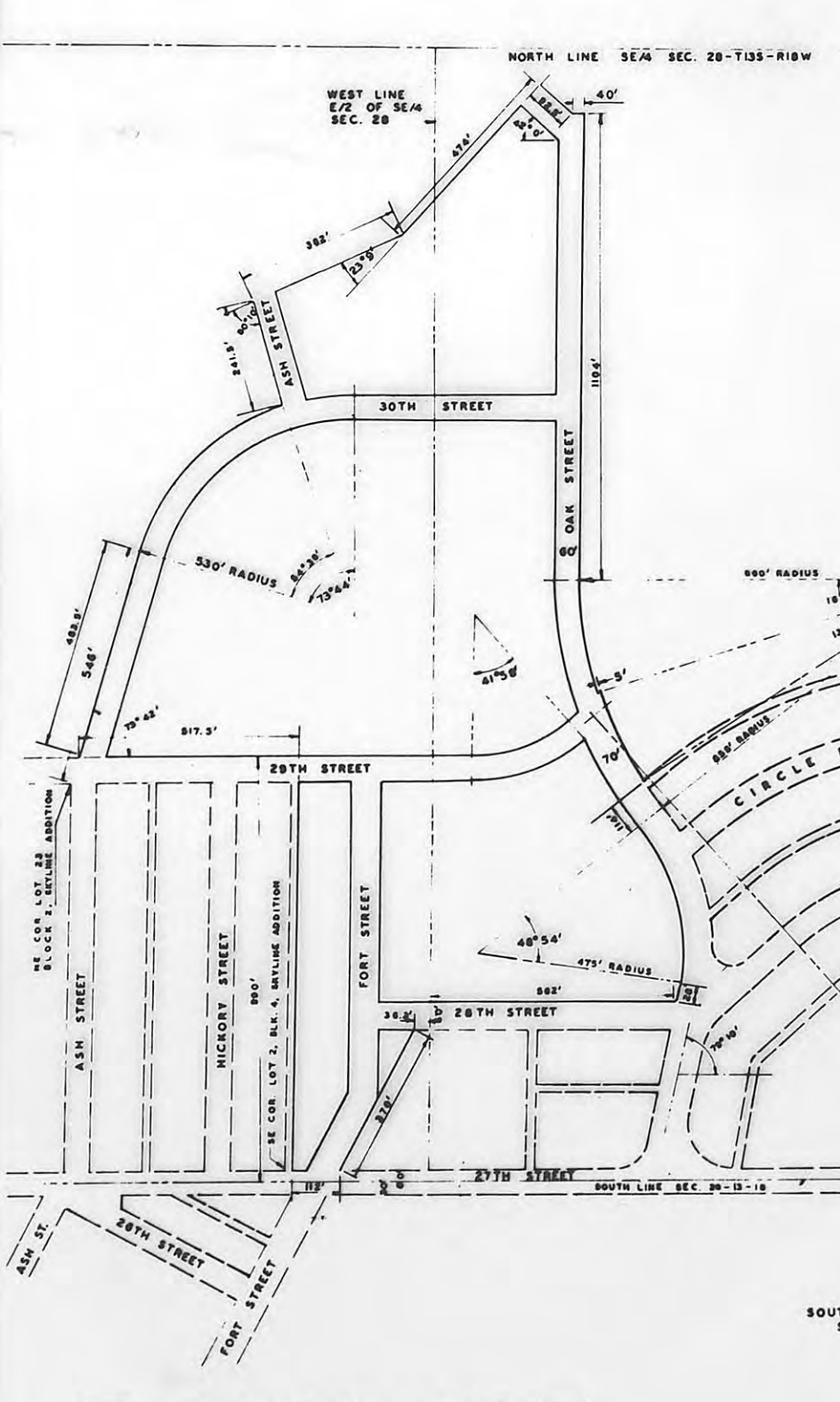
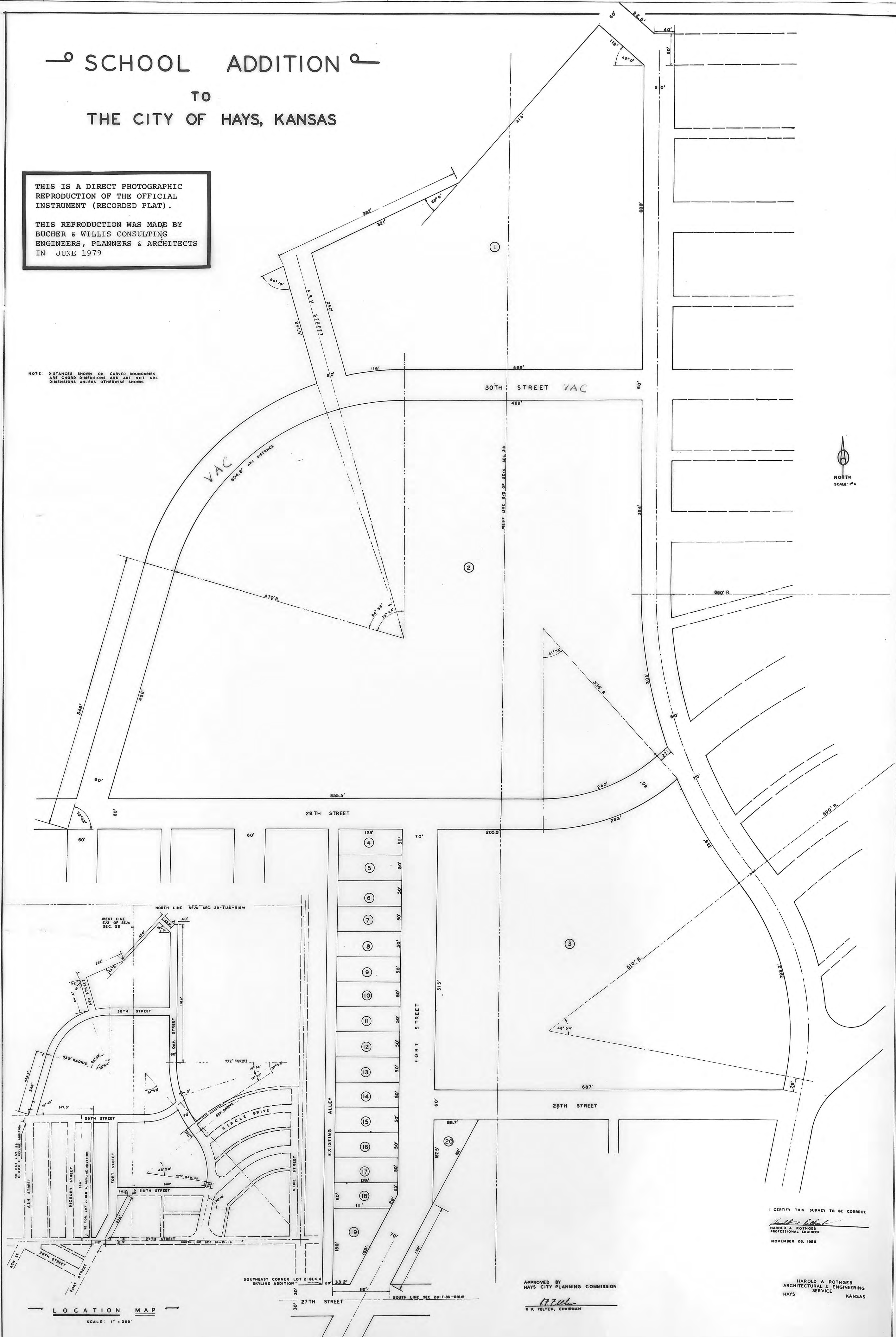
Book: 260 Pg: 99

SCHOOL ADDITION TO THE CITY OF HAYS, KANSAS

THIS IS A DIRECT PHOTOGRAPHIC REPRODUCTION OF THE OFFICIAL INSTRUMENT (RECORDED PLAT).

THIS REPRODUCTION WAS MADE BY BUCHER & WILLIS CONSULTING ENGINEERS, PLANNERS & ARCHITECTS IN JUNE 1979

NOTE: DISTANCES SHOWN ON CURVED BOUNDARIES ARE CHORD DIMENSIONS AND ARE NOT ARC DIMENSIONS UNLESS OTHERWISE SHOWN.



I CERTIFY THIS SURVEY TO BE CORRECT.
Harold A. Rothger
HAROLD A. ROTHGER
PROFESSIONAL ENGINEER
NOVEMBER 26, 1956

APPROVED BY
HAYS CITY PLANNING COMMISSION
R. F. Felten
R. F. FELTEN, CHAIRMAN

HAROLD A. ROTHGER
ARCHITECTURAL & ENGINEERING
SERVICE KANSAS

LOCATION MAP
SCALE: 1" = 200'