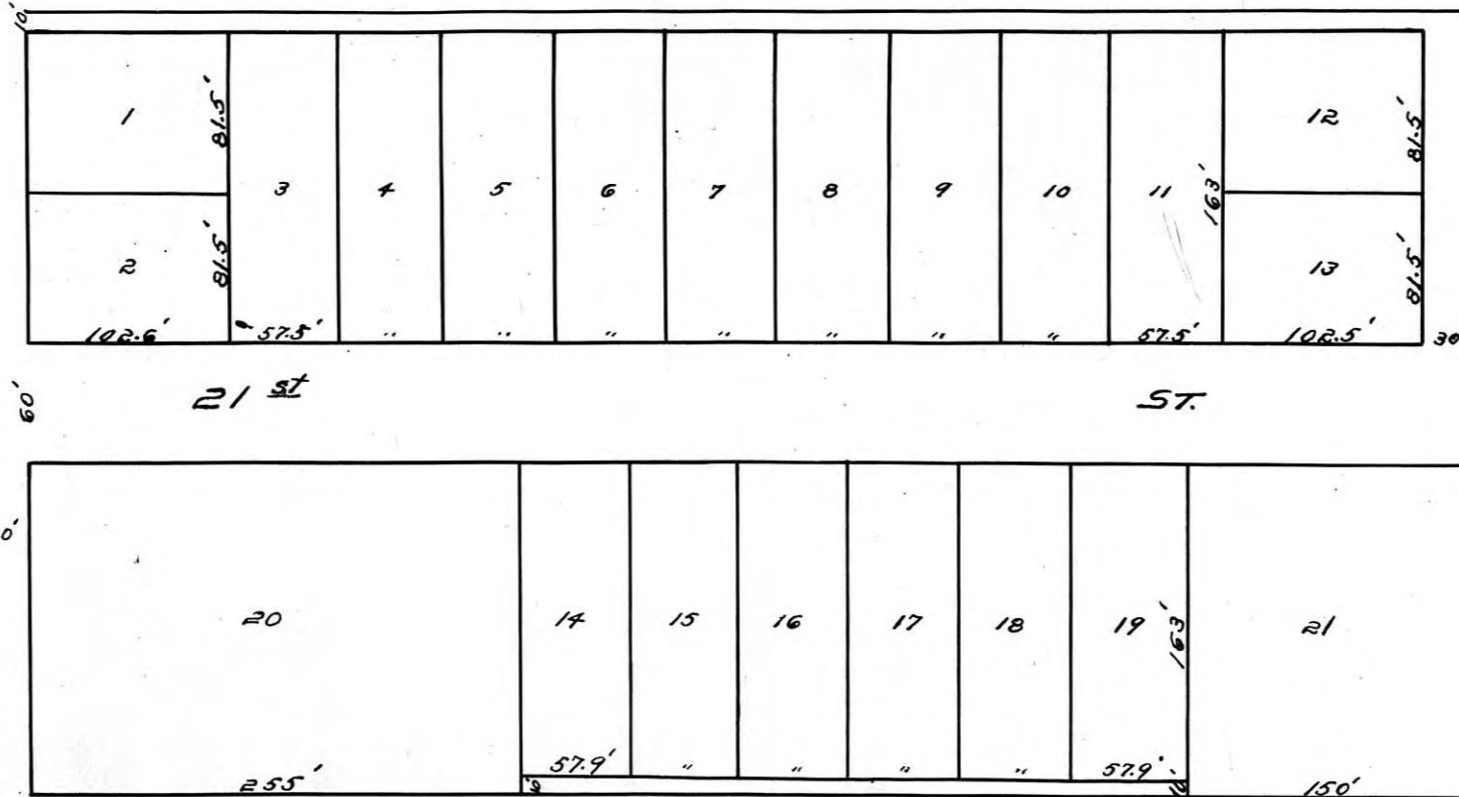




West Line Sec. 33-T.13 R.12. Separation Limits



SCHWALLER SUB-DIVISION  
OF  
LOTS 5 & 6 LEBOLD ALLEN  
COMPANY'S ADDITION TO  
THE CITY OF HAYS KANS.

Scale 1 inch = 100'

STATE OF KANSAS 56  
ELLIS COUNTY  
This instrument was filed for record  
MAY 7 1907  
3:15 P. M. Recorded in  
1. Min. page 125  
J. K. [Signature]  
\$2.00

Indication See Map Book 27  
Page 205