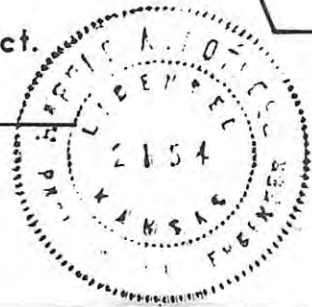


ARCHITECTURAL ENGINEERING  
SERVICE  
HAYS KANSAS

I certify this survey to be correct.

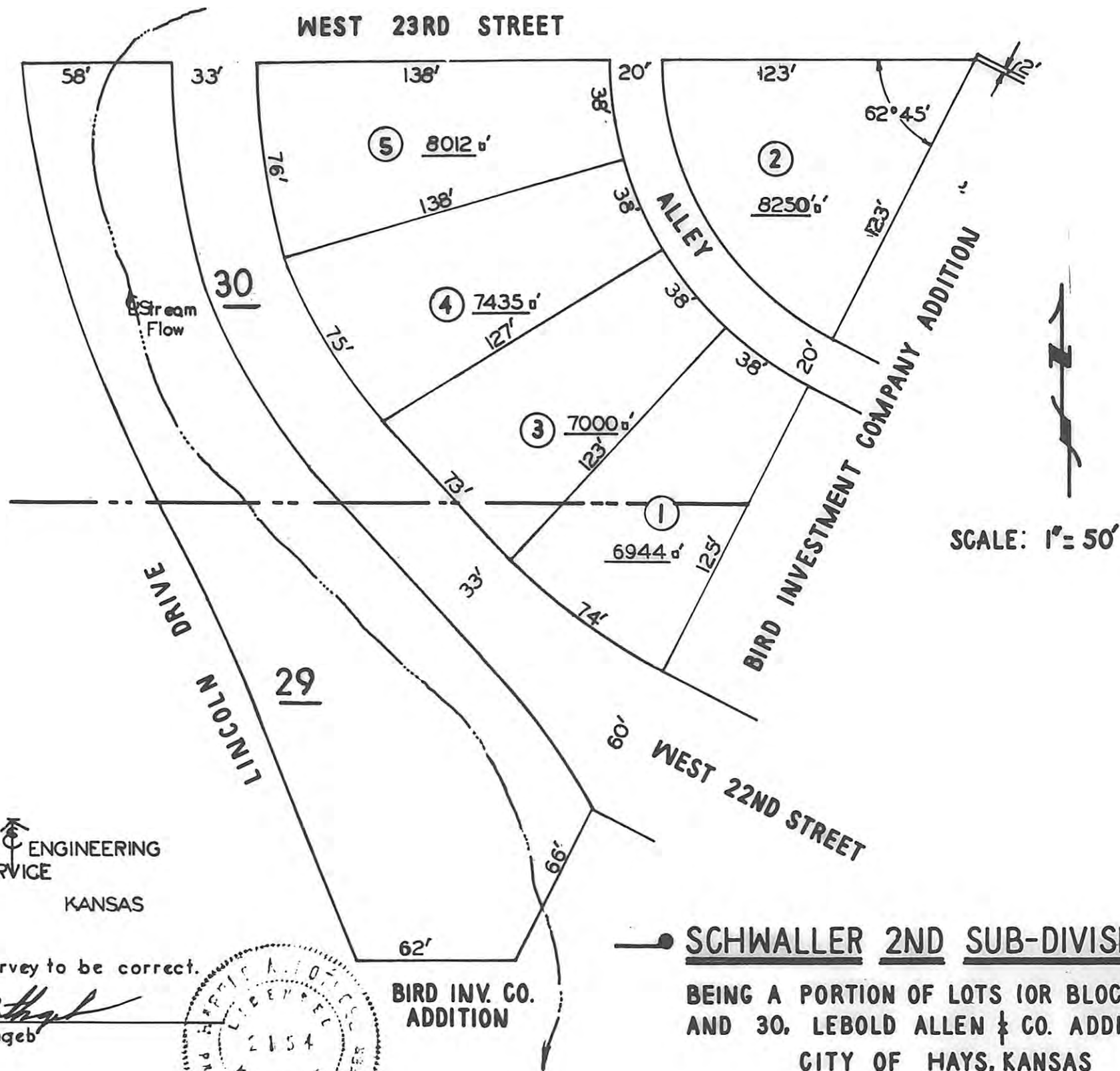
*Harold A. Rothgeb*  
Harold A. Rothgeb



BIRD INV. CO.  
ADDITION

**SCHWALLER 2ND SUB-DIVISION**

BEING A PORTION OF LOTS (OR BLOCKS) 29  
AND 30, LEBOLD ALLEN & CO. ADDITION  
CITY OF HAYS, KANSAS



THIS IS A DIRECT PHOTOGRAPHIC REPRODUCTION OF THE OFFICIAL INSTRUMENT (RECORDED PLAT).

THIS REPRODUCTION WAS MADE BY BUCHER & WILLIS, CONSULTING ENGINEERS, PLANNERS &  
ARCHITECTS IN JUNE 1979